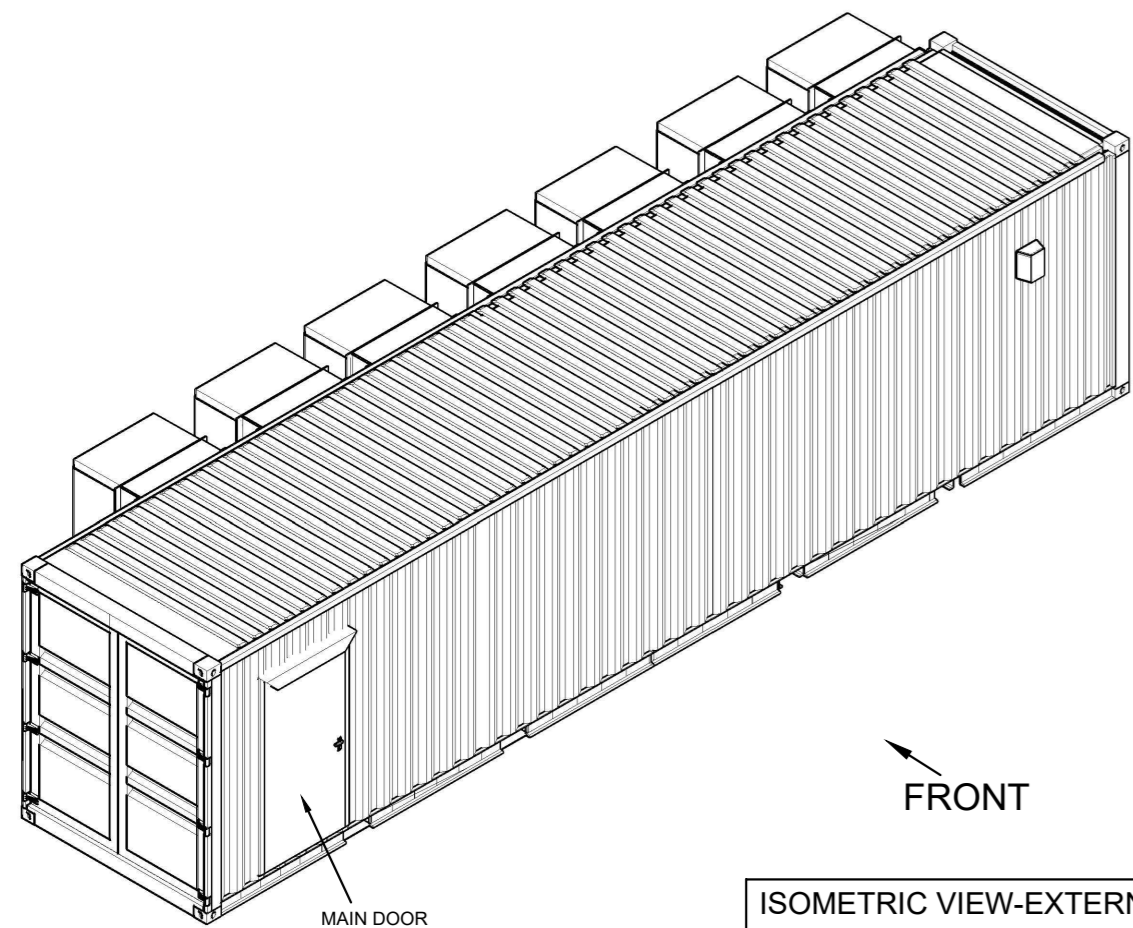


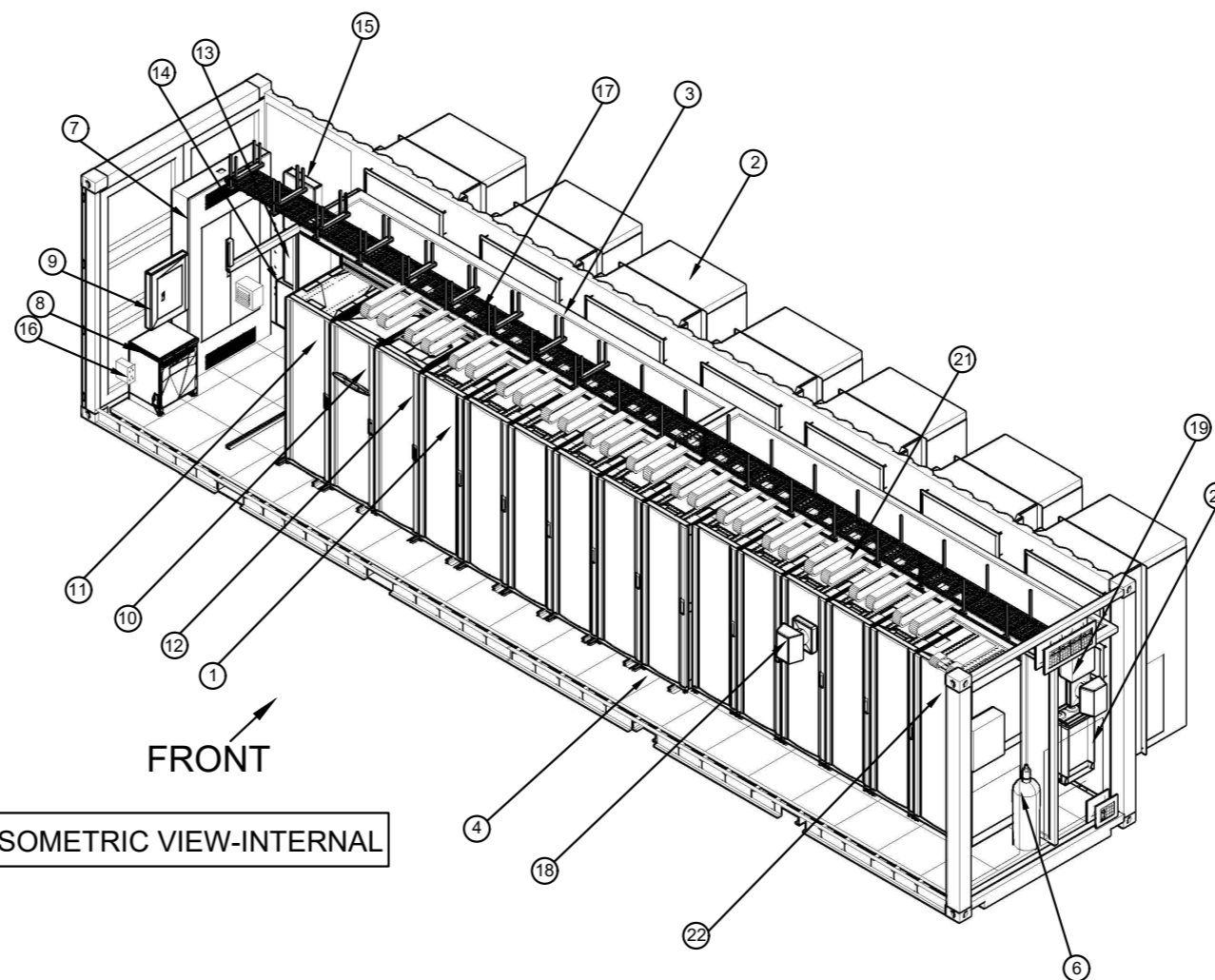
**NOT FOR CONSTRUCTION**

\* - UNLESS OTHERWISE SPECIFIED QUANTITY IS ONE

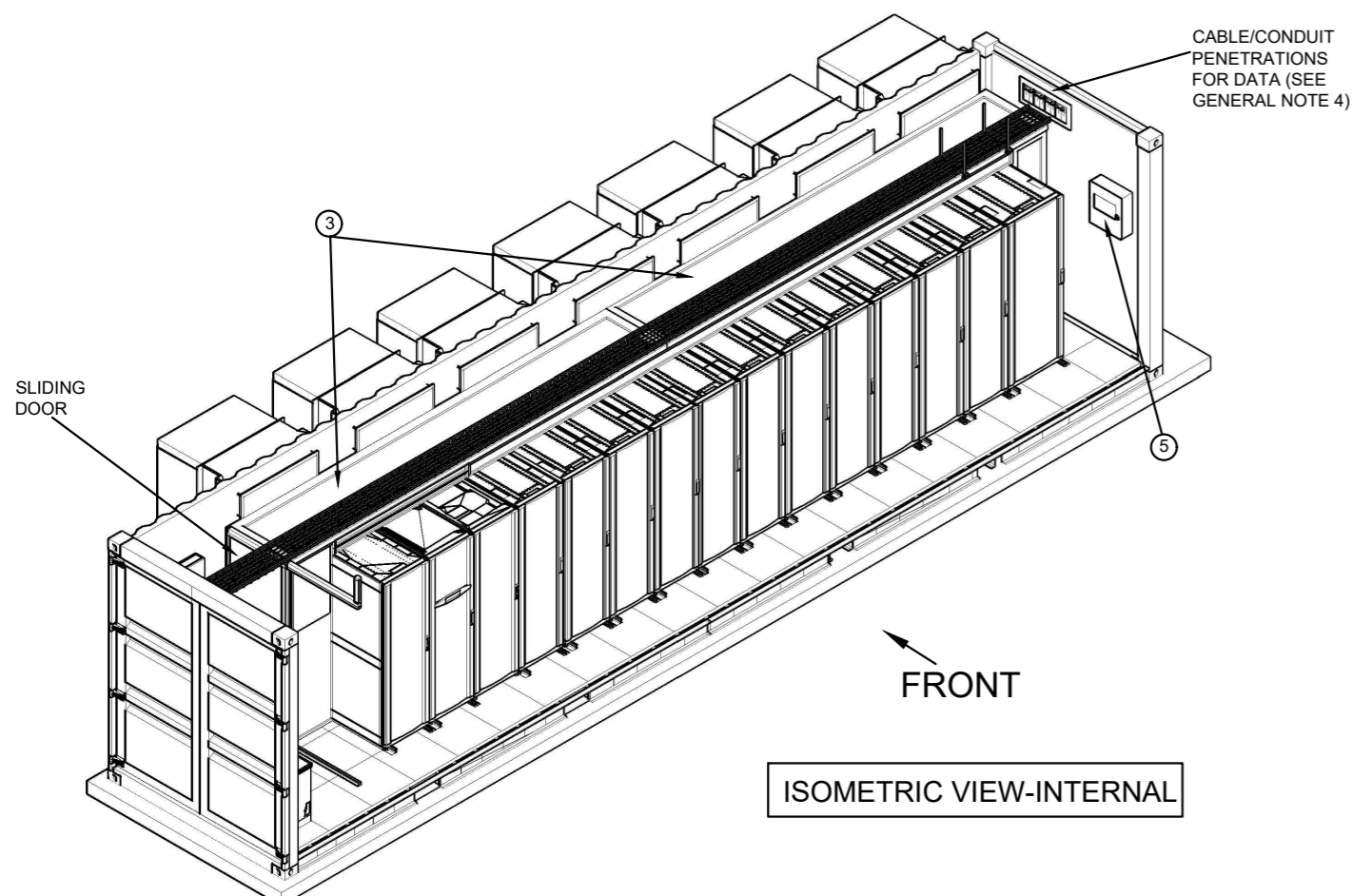
SL.NO.	DESCRIPTION *
1	IT Racks-(qty 11) 42Ux600x1200
2	Wallmount Cooling Unit - WMF0661(Typical, Qty=7)
3	Hot Aisle Containment
4	Cold Aisle
5	Fire Alarm Control Panel
6	Fire Suppression Cylinder
7	480V Main Distribution Panel(Service Entrance)
8	480-208/120V Step Down Transformer
9	208/120V Distribution Panel
10	Symmetra PX100 UPS
11	XR Battery Cabinet for Symmetra PX100 UPS
12	Power Distribution Cabinet for Symmetra PX100 UPS
13	Generator Annunciator Panel(Optional)
14	Control Panel
15	Access Control Panel(Optional)
16	120V Receptacle
17	Cable Tray(Typical)
18	Energy Recovery Ventilator with Damper System
19	Climate Controller(Optional)
20	Humidifier(Optional)
21	E-Chains(Typical)
22	Networking IT Rack-(qty 1) 42Ux750x1200



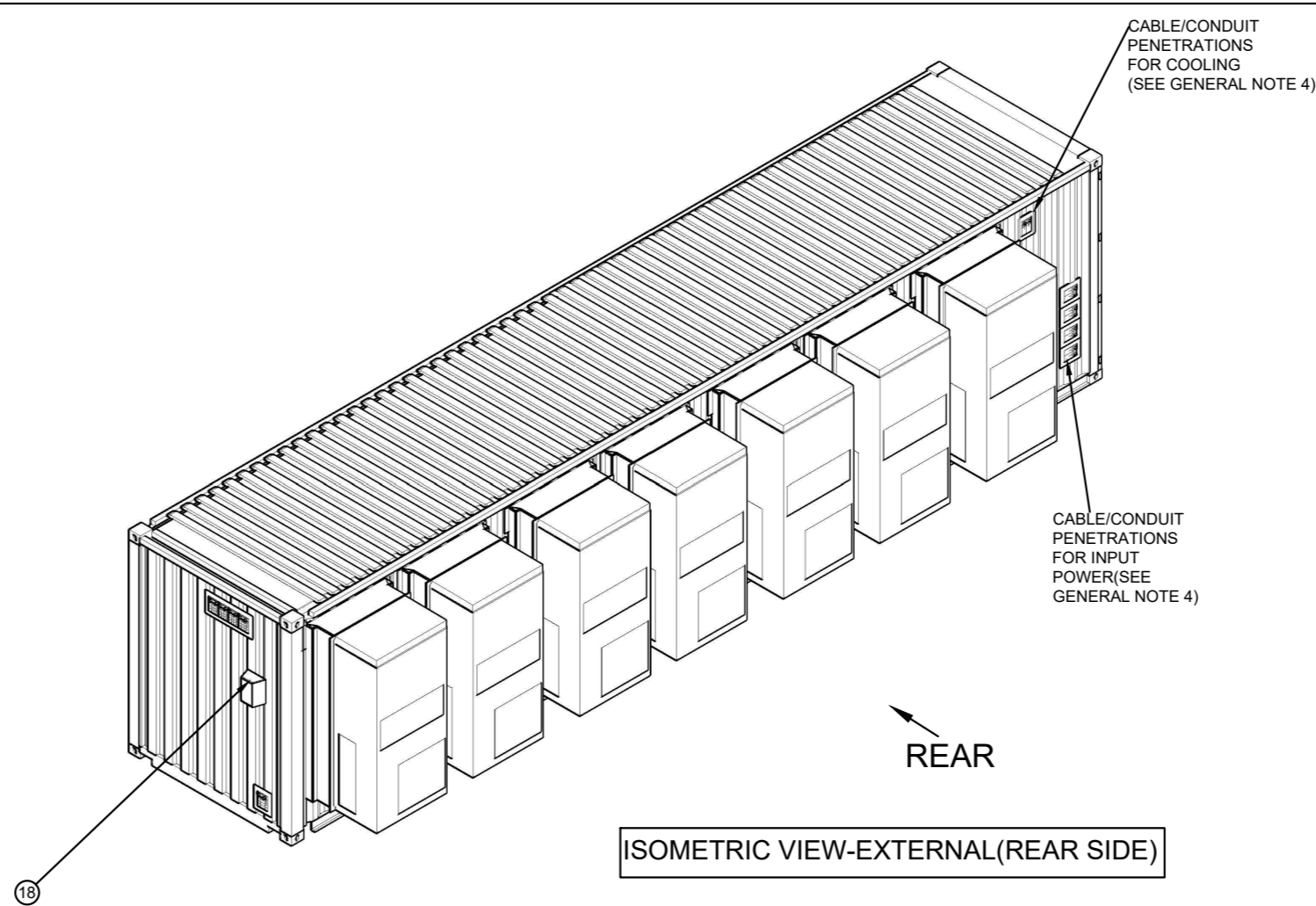
ISOMETRIC VIEW-EXTERNAL(FRONT SIDE)



ISOMETRIC VIEW-INTERNAL



ISOMETRIC VIEW-INTERNAL



ISOMETRIC VIEW-EXTERNAL(REAR SIDE)

**GENERAL NOTES:**

1. INSTALLATION SHALL COMPLY WITH ALL APPLICABLE NATIONAL, STATE AND LOCAL CODES.
2. PLEASE REFER TO PRODUCT DOCUMENTATION FOR FURTHER INFORMATION.
3. UNLESS OTHERWISE SPECIFIED, ALL DIMENSIONS ARE IN INCHES[MILLIMETERS].
4. REFER TO ELECTRICAL DRAWINGS FOR OBTAINING CONDUIT SIZES AND THE EXACT LOCATIONS OF CABLE/CONDUIT PENETRATIONS FOR INPUT POWER, DATA CABLES AND COOLING SYSTEM.
5. REFER TO THE ELECTRICAL DRAWINGS FOR SPECIFIC DETAILS ON THE ELECTRICAL SYSTEM.

FILENAME/PATH:

0	THIS DRAWING IS BASED ON DRAWING NUMBER PLACEHOLDER - INITIAL RELEASE	DD-MMM-YY					
REV	DESCRIPTION	DRWN	DATE	ENGR	DATE	APPR	DATE

REVISIONS

THIS DRAWING AND SPECIFICATIONS HEREIN ARE THE PROPERTY OF SCHNEIDER ELECTRIC AND SHALL NOT BE COPIED, REPRODUCED OR USED IN WHOLE OR IN PART, AS THE BASIS FOR THE MANUFACTURE OR SALE OF ITEMS WITHOUT WRITTEN PERMISSION FROM SCHNEIDER ELECTRIC. THIS DRAWING IS BASED UPON LATEST AVAILABLE INFORMATION AND IS SUBJECT TO CHANGE WITHOUT NOTICE.

**Schneider Electric**

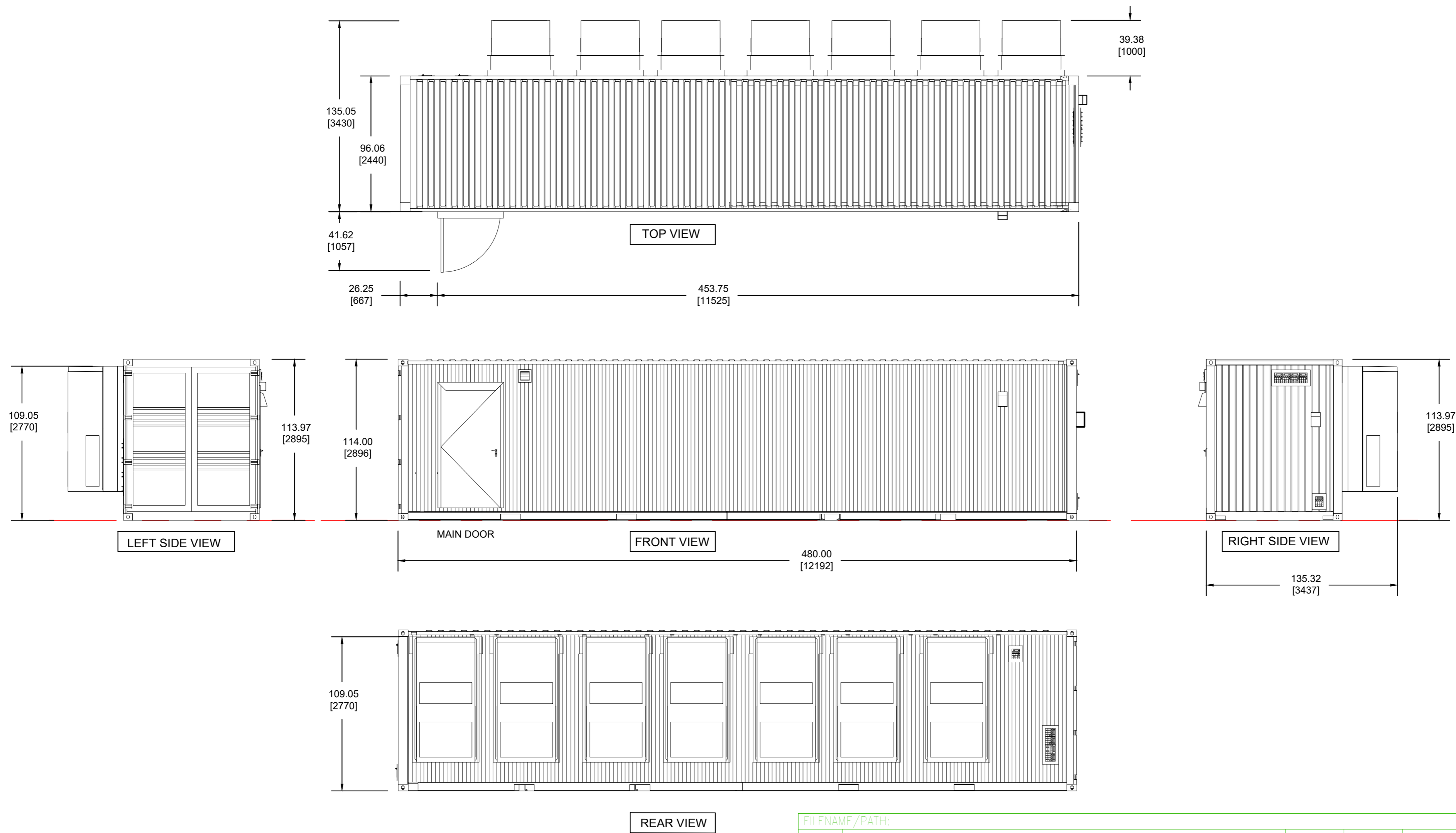
TITLE: PREFAB CONFIGURATION-11 75KW(N+1), ROOM COOLING, 12 RACKS INPUT - 480V,3PH,4W OUTPUT - 208V,3PH,4W ISOMETRIC VIEWS

DWG NO: PFMIEC075W1N12C REV: A/0

PROJECT: PREFAB SHEET 1 OF 3

APPROVED: X XXX DD-MMM-YY

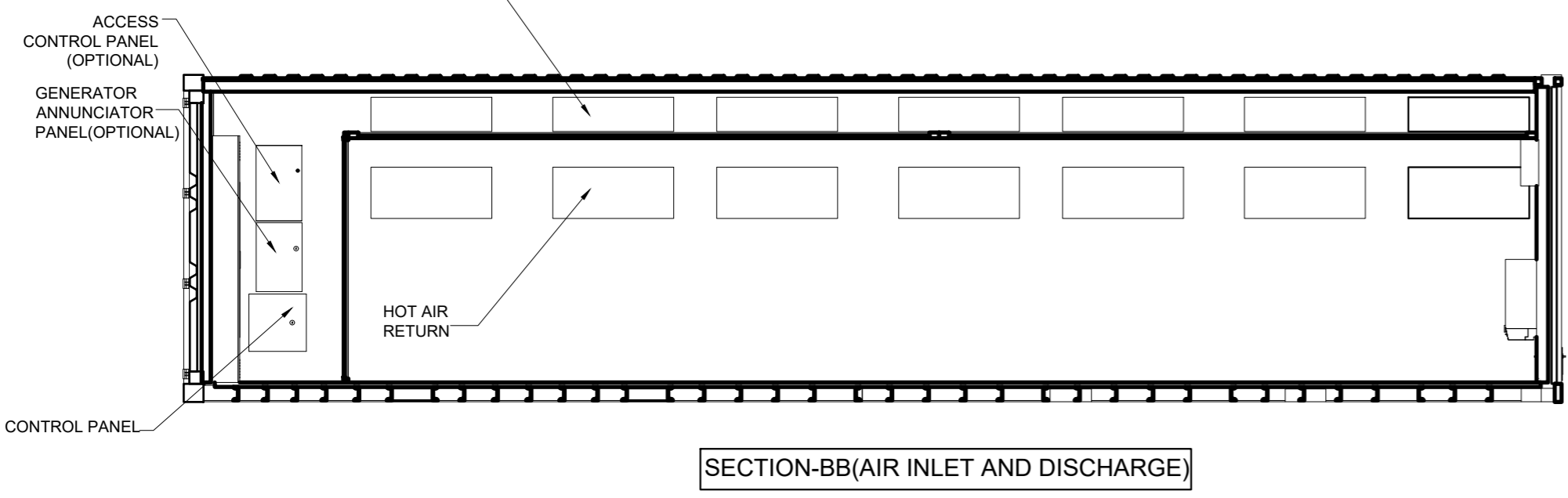
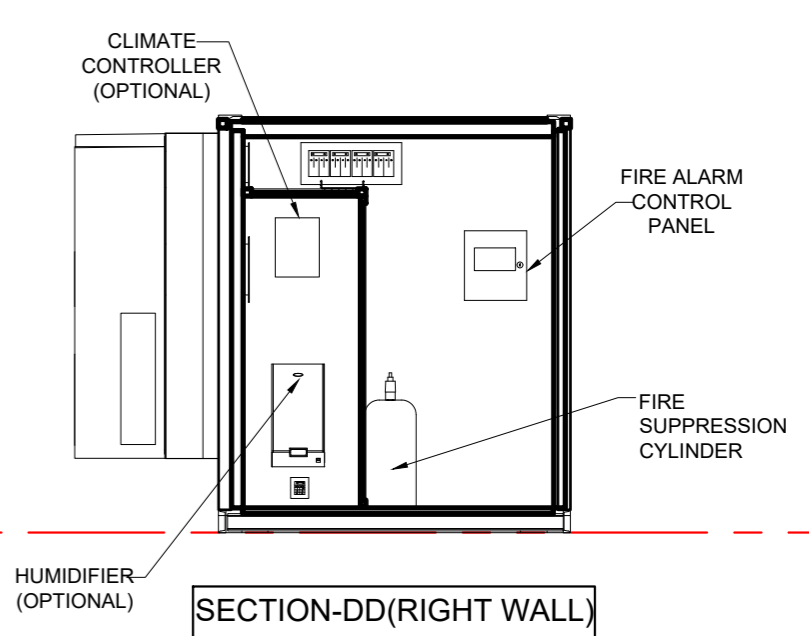
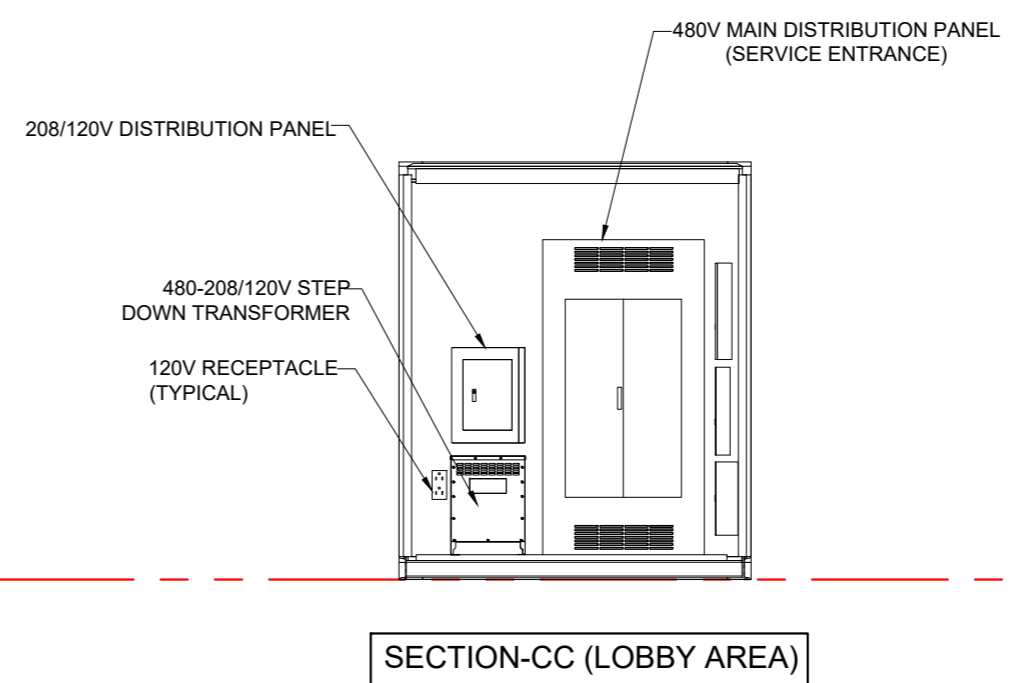
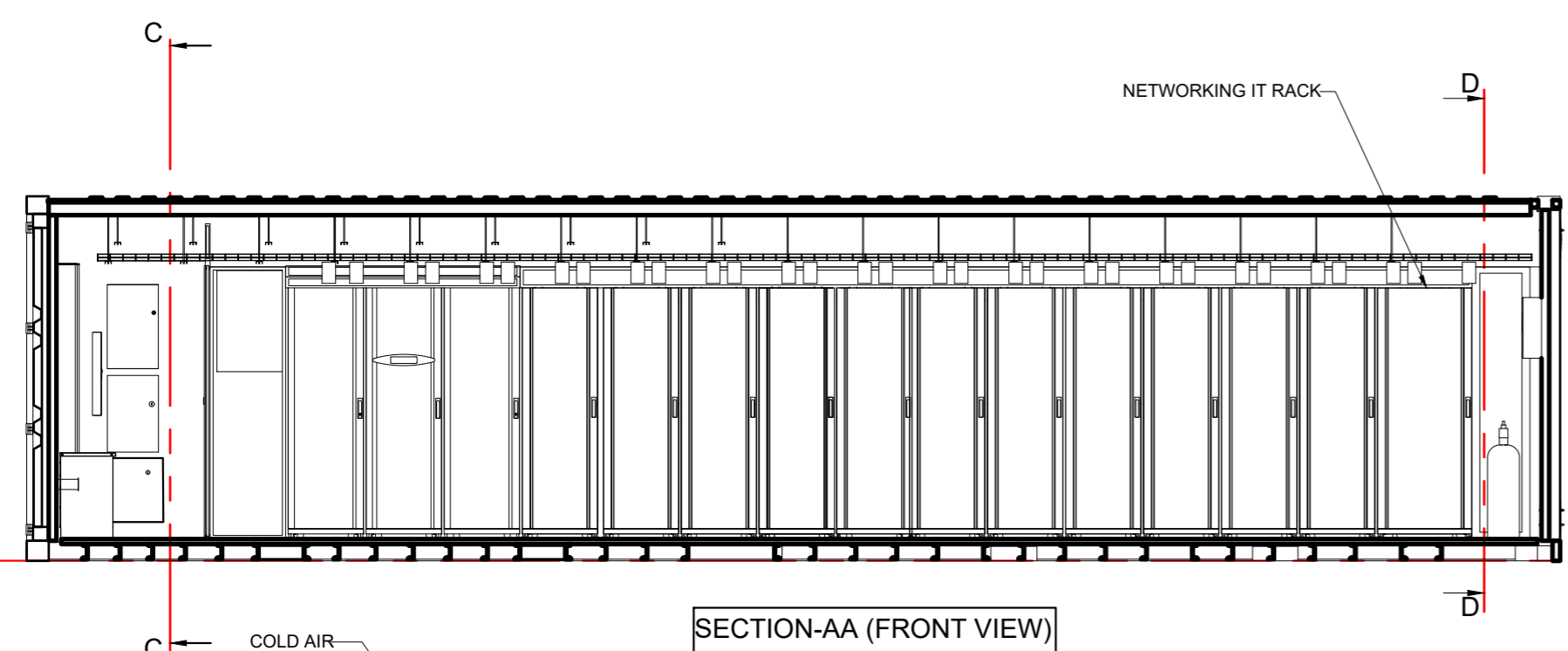
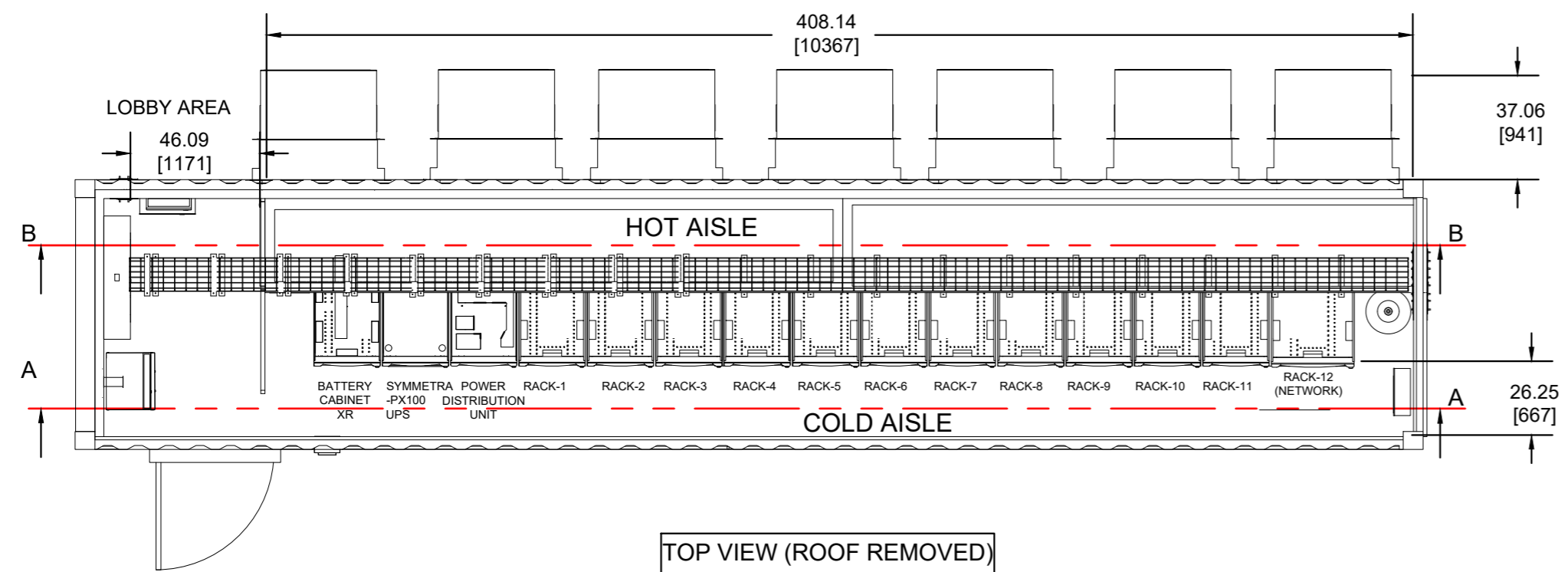
NOT FOR CONSTRUCTION



- GENERAL NOTES:**
1. INSTALLATION SHALL COMPLY WITH ALL APPLICABLE NATIONAL, STATE AND LOCAL CODES.
  2. PLEASE REFER TO PRODUCT DOCUMENTATION FOR FURTHER INFORMATION.
  3. UNLESS OTHERWISE SPECIFIED, ALL DIMENSIONS ARE IN INCHES[MILLIMETERS].
  4. REFER TO ELECTRICAL DRAWINGS FOR OBTAINING CONDUIT SIZES AND THE EXACT LOCATIONS OF CABLE/CONDUIT PENETRATIONS FOR INPUT POWER, DATA CABLES AND COOLING SYSTEM.
  5. REFER TO THE ELECTRICAL DRAWINGS FOR SPECIFIC DETAILS ON THE ELECTRICAL SYSTEM.

FILENAME/PATH:						
0	THIS DRAWING IS BASED ON DRAWING NUMBER PLACEHOLDER - INITIAL RELEASE					DD-MMM-YY
REV	DESCRIPTION	DRWN	DATE	ENGR	DATE	APPR
REVISIONS						
THIS DRAWING AND SPECIFICATIONS HEREIN ARE THE PROPERTY OF SCHNEIDER ELECTRIC AND SHALL NOT BE COPIED, REPRODUCED OR USED IN WHOLE OR IN PART, AS THE BASIS FOR THE MANUFACTURE OR SALE OF ITEMS WITHOUT WRITTEN PERMISSION FROM SCHNEIDER ELECTRIC. THIS DRAWING IS BASED UPON LATEST AVAILABLE INFORMATION AND IS SUBJECT TO CHANGE WITHOUT NOTICE.				TITLE: PREFAB CONFIGURATION-11 75KW(N+1), ROOM COOLING, 12 RACKS INPUT - 480V,3PH,4W OUTPUT - 208V,3PH,4W GENERAL ARRANGEMENT		DWG NO: PFMIEC075W1N12C REV: A/0
PROJECT: PREFAB SHEET 2 OF 3		DRAWN: K.NAGENDRA		31-JAN-20		THIRD ANGLE PROJECTION
		ENGINEER: X XXX		DD-MMM-YY		
		APPROVED: X XXX		DD-MMM-YY		

NOT FOR CONSTRUCTION



**GENERAL NOTES:**

1. INSTALLATION SHALL COMPLY WITH ALL APPLICABLE NATIONAL, STATE AND LOCAL CODES.
2. PLEASE REFER TO PRODUCT DOCUMENTATION FOR FURTHER INFORMATION.
3. UNLESS OTHERWISE SPECIFIED, ALL DIMENSIONS ARE IN INCHES[MILLIMETERS].
4. REFER TO ELECTRICAL DRAWINGS FOR OBTAINING CONDUIT SIZES AND THE EXACT LOCATIONS OF CABLE/CONDUIT PENETRATIONS FOR INPUT POWER, DATA CABLES AND COOLING SYSTEM.
5. REFER TO THE ELECTRICAL DRAWINGS FOR SPECIFIC DETAILS ON THE ELECTRICAL SYSTEM.

FILENAME/PATH:						
0	THIS DRAWING IS BASED ON DRAWING NUMBER PLACEHOLDER - INITIAL RELEASE					DD-MMM-YY
REV	DESCRIPTION	DRWN	DATE	ENGR	DATE	APPR
REVISIONS						
THIS DRAWING AND SPECIFICATIONS HEREIN ARE THE PROPERTY OF SCHNEIDER ELECTRIC AND SHALL NOT BE COPIED, REPRODUCED OR USED IN WHOLE OR IN PART, AS THE BASIS FOR THE MANUFACTURE OR SALE OF ITEMS WITHOUT WRITTEN PERMISSION FROM SCHNEIDER ELECTRIC. THIS DRAWING IS BASED UPON LATEST AVAILABLE INFORMATION AND IS SUBJECT TO CHANGE WITHOUT NOTICE.		<b>Schneider Electric</b>		TITLE: PREFAB CONFIGURATION-11 75KW(N+1), ROOM COOLING, 12 RACKS INPUT - 480V,3PH,4W OUTPUT - 208V,3PH,4W SECTIONAL VIEWS		DWG NO: PFMIEC075W1N12C
PROJECT: PREFAB		SHEET 3 OF 3		DRAWN: K.NAGENDRA		31-JAN-20
				ENGINEER: X XXX		DD-MMM-YY
				APPROVED: X XXX		DD-MMM-YY
						THIRD ANGLE PROJECTION