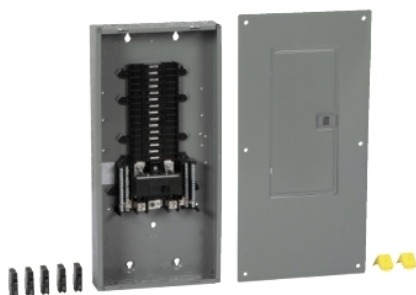


Product availability: Stock - Normally stocked in distribution facility



Main

Circuit breaker type	10 tandem
Cover type	Combination flush/surface cover
Device application	Value pack
Module type	QOM2
Provided equipment	1 QO13040M200C circuit breaker 5 QO120 circuit breaker
Range of product	QO

Complementary

AWG gauge	AWG 4...250 kcmil aluminium/copper
Box number	9R
Depth	95.25 mm (3.75 in)
Height	758.44 mm (29.86 in)
Load center type	Main breaker
Number of spaces	30
Short-circuit protection	22 kA
Width	361.95 mm (14.25 in)
Wiring configuration	3-wire

Environment

Product certifications	UL listed
------------------------	-----------

Ordering and shipping details

Category	00184 - MISC. QO 1PH LOAD CENTERS
Discount Schedule	DE3A
GTIN	00785901334507
Package weight(Lbs)	14.16 kg (31.21 lb(US))
Returnability	No
Country of origin	US

Offer Sustainability

REACH Regulation	REACH Declaration
EU RoHS Directive	Compliant EU RoHS Declaration
Mercury free	Yes
RoHS exemption information	Yes
China RoHS Regulation	China RoHS Declaration
Circularity Profile	No need of specific recycling operations

Contractual warranty

Warranty	18 months
----------	-----------