

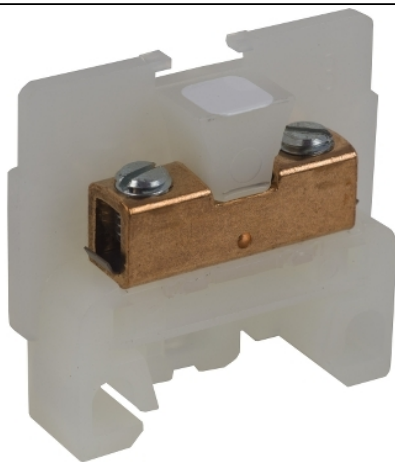
# Product data sheet

## Characteristics

# 9080GK6

Terminal Block, box lug connector, 40 A, 600 VAC/DC, natural colored block

Product availability: Stock - Normally stocked in distribution facility



## Main

Range of product	9080G
Product or component type	Terminal block
Product	Terminal block standard
Color	Natural
Quantity	Set of 50

## Complementary

System Voltage	600 V AC/DC
Current Rating	40 A per: CSA 70 A per: UL
Wire Size	AWG 22...AWG 10 (copper)
Mounting Type	9080GH track Panel
Certifications	CSA file 62144 class 6228 01 UL recognized E60616 CCN XCFR2 CE
Material	Nylon block
Electrical Connection	Box lugs copper
Ambient air temperature for operation	-40...257 °F
Electrical Connection Tightening Torque	Lug copper Tightening Torque: 11...12 lbf.in for: AWG 22...AWG 10 (copper)
Height	1.39 in
Width	1.4 in
Depth	0.35 in
Density	35 per foot
Compatible End Barrier	GK6B

## Ordering and shipping details

Category	21702 - 9080 G (NOT GCB)
Discount Schedule	CP5
GTIN	00785901000822
Nbr. of units in pkg.	50
Package weight(Lbs)	0.02
Returnability	Y
Country of origin	MX

## Offer Sustainability

RoHS (date code: YYWW)	Compliant - since 0847 - Schneider Electric declaration of conformity <a href="#">Schneider Electric declaration of conformity</a>
California proposition 65	WARNING: This product can expose you to chemicals including:
- - - - - Substance 1	Lead and lead compounds, which is known to the State of California to cause cancer and birth defects or other reproductive harm.
- - - - - More information	For more information go to <a href="http://www.p65warnings.ca.gov">www.p65warnings.ca.gov</a>

Contractual warranty

Warranty period	18 months
-----------------	-----------