

SSLM1LD23BD

solid state relay - DIN rail mount - input 4-28 V DC, output 5-60 V DC, 3A



Main

Range of product	Zelio Relay
Product or component type	Solid state relay
Device short name	SSLM
Network number of phases	1 phase

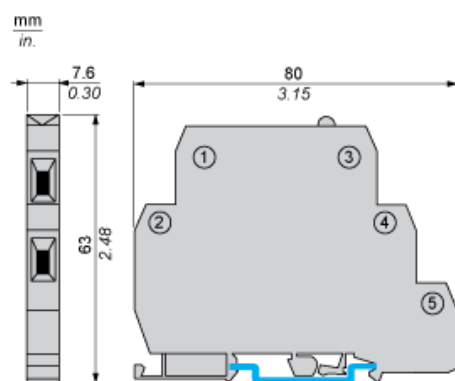
Complementary

Mounting support	Symmetrical DIN rail
[In] rated current	3 A
Output voltage	5...60 V DC
Control circuit voltage	4...28 V DC
Contacts type and configuration	1 NO
Tightening torque	0.6...0.8 N.m
Connections - terminals	Screw terminals : 1 x 0.2...1 x 5.26 mm ² (AWG 24...AWG 10)
Switching voltage	4 V DC turn-on
Load current	0...3 A
Voltage drop	1 V on-state
Leakage current	<= 0.001 mA off-state
Response time	100 µs turn-off 50 µs turn-on
Overvoltage category	III
Width	7.5 mm
Height	80 mm
Depth	63 mm
Product weight	0.03 kg

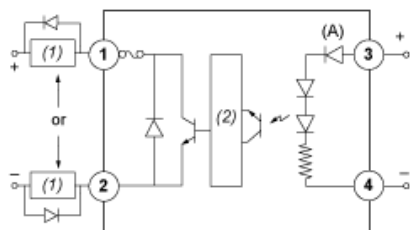
Environment

Dielectric strength	4000 V for input/output
Pollution degree	2
Standards	UL 508 CSA C22.2 No 14 EN 60947-4-3
Product certifications	CSA UL EAC
Marking	CE CSA UL EAC
IP degree of protection	IP20
Ambient air temperature for operation	0...70 °C

Dimensions



Wiring Diagram



1,2 : Field VDC (Supply through Load)

3, 4 : Vcc

(1) Load

(2) Amplifier

(A) LED