

### Main

Commercial Status	End of commercialisation
Range of product	Modicon Momentum automation platform
Product or component type	M1 processor adaptors power supply

### Complementary

Input voltage	230 V adjustable by jumper AC 120 V adjustable by jumper AC
Nominal output current	<= 0.7 A
Output voltage	24 V DC
Associated fuse rating	0.63 A aM 120 V 0.315 A 230 V
Local signalling	1 LED module operating (RUN)
Connections - terminals	Terminal strip connector
Product weight	0.63 lb(US) (0.284 kg)

### Environment

Ambient air temperature for operation	32...140 °F (0...60 °C)
Ambient air temperature for storage	-13...158 °F (-25...70 °C)
Relative humidity	5...95 % without condensation
Operating altitude	<= 6561.68 ft (2000 m)

### Ordering and shipping details

Category	18206 - MOMENTUM PROCESSORS,I/O BASES,CONN.
Discount Schedule	PC31
GTIN	00785901115731
Nbr. of units in pkg.	1
Returnability	N
Country of origin	DE

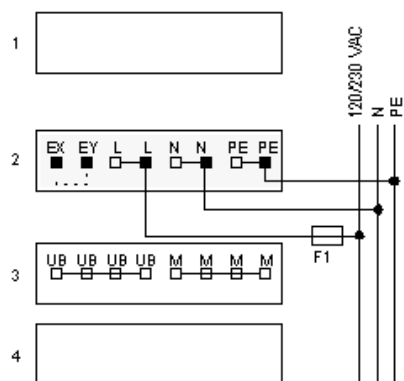
### Offer Sustainability

Sustainable offer status	Not Green Premium product
RoHS (date code: YYWW)	Compliant - since 0802 - <a href="#">Schneider Electric declaration of conformity</a>

### Contractual warranty

Warranty period	18 months
-----------------	-----------

## Wiring Diagram



EX, Jumper connection  
EY  
L AC input voltage, line  
N AC input voltage, neutral  
PE Earth ground  
UB DC output voltage  
M DC output voltage return

---

Output Current Derating

---

