



PLX51-DF1-MSG

DF1 Messenger

DF1 to EtherNet/IP™ Messenger

December, 2017

CONTENTS

1. Preface	5
1.1. Introduction to the PLX51-DF1-MSG	5
1.2. Features.....	6
1.3. Architecture.....	7
1.4. Additional Information.....	9
2. Installation	11
2.1. Module Layout	11
2.2. Module Mounting	13
2.3. Power	14
2.4. RS232 Port.....	14
2.5. Ethernet Port.....	14
3. Setup	15
3.1. Install Configuration Software	15
3.2. Network Parameters	15
3.3. Creating a New Project.....	20
3.4. DF1 parameters.....	22
3.5. Message Routing	26
3.5.1. DF1 Slave Mode	26
3.5.2. Scheduled Tag Mode.....	31
3.6. Module Download.....	35
3.7. RSLogix 5000 Configuration	37
3.7.1. Studio 5000 Configuration (Version 20+)	37
3.7.2. RSLogix 5000 Configuration (Pre-Version 20).....	41
4. Operation	45
4.1. Message Routing	45
4.2. RSLogix 5000 assemblies.....	45
4.2.1. Input Assembly.....	46
4.2.2. Output Assembly.....	47
5. Diagnostics	49
5.1. LEDs	49
5.2. Module Status Monitoring	50

5.3.	DF1 Packet Capture	55
5.4.	Module Event Log.....	58
5.5.	Web Server	59
6.	Technical Specifications	61
6.1.	Dimensions	61
6.2.	Electrical	62
6.3.	Ethernet.....	62
6.4.	DF1.....	63
6.5.	Certifications	63
7.	Support, Service & Warranty	65
7.1.	Contacting Technical Support	65
7.2.	Warranty Information	67
8.	Index.....	69

Revision History

Revision	Date	Comment
1.0	December 2017	Initial document

1. PREFACE

1.1. INTRODUCTION TO THE PLX51-DF1-MSG

This manual describes the installation, operation, and diagnostics of the ProSoft Technology PLX51-DF1-MSG DF1 Messenger. The PLX51-DF1-MSG provides intelligent data routing between EtherNet/IP and DF1 which can help simplify the migration from PLC2, PLC3, PLC5, and SLC systems to ControlLogix or CompactLogix platforms, where a DF1 interface is required.

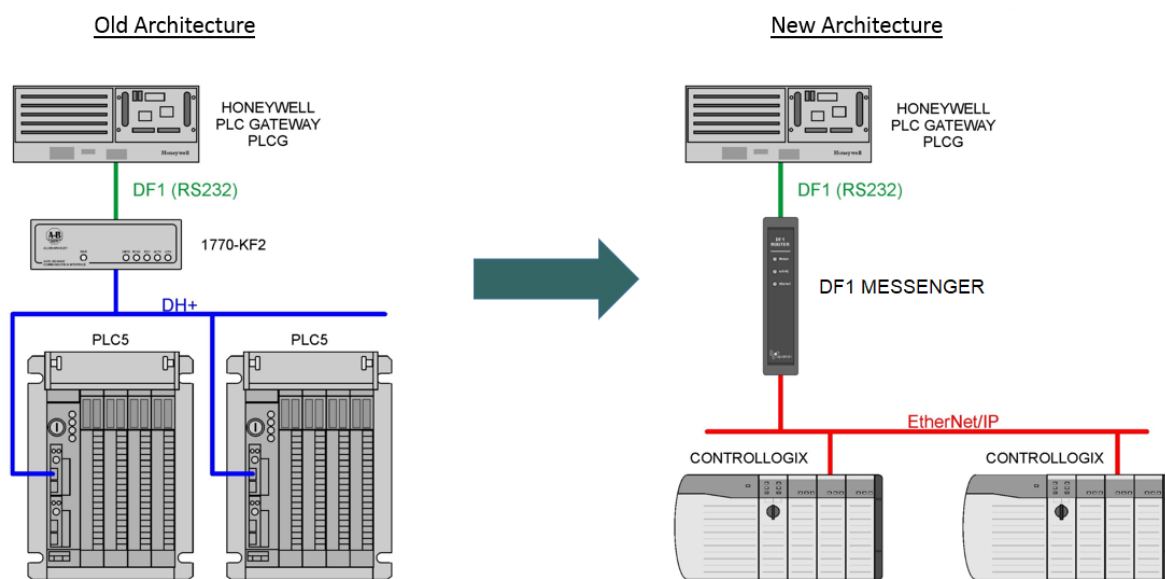


Figure 1.1. - Migration Path

1.2. FEATURES

The PLX51-DF1-MSG can transfer data from a DF1 device to a maximum of eight Logix controllers. The module operates in one of three modes, simplifying the configuration for all applications.

Mode	Description	Message Initiator
DF1 Slave	The PLX51-DF1-MSG converts DF1 messages to Logix controller tag reads or tag writes. No Logix PLC Mapping configuration is required.	Remote Device
Scheduled Tag	The PLX51-DF1-MSG transfers data between a DF1 device and a number of Logix tags, using a preconfigured schedule. No Logix or remote device configuration is required.	PLX51-DF1-MSG

Table 1.1. – Modes of Operation

The PLX51-DF1-MSG is configured using the ProSoft PLX50 Configuration Utility. This program can be downloaded from www.prosoft-technology.com free of charge. The PLX50 Configuration Utility offers various configuration methods, including a controller tag browser.

Hereafter the PLX51-DF1-MSG will be referred to as the **module**.

The module can operate in both a Logix “owned” and standalone mode. With a Logix connection, the input and output assemblies will provide additional diagnostics information which will be available in the Logix controller environment.

The module uses isolated RS232 for DF1 communication providing better noise immunity. The RS232 port also uses a terminal block for convenient installation. The module can also be used in systems with redundant DF1 pathways.

A built-in webserver provides detailed diagnostics of system configuration and operation, including the display of received DF1 communication packets, without the need for any additional software.

1.3. ARCHITECTURE

The figure below provides an example of the typical network setup.

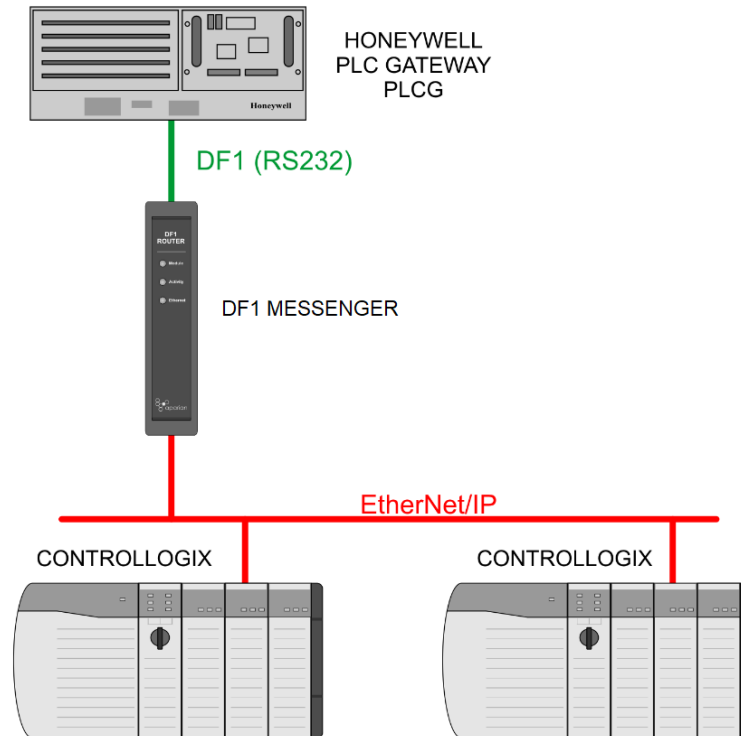


Figure 1.2. - Example of a typical network setup

By converting and redirecting serial DF1 messages from legacy devices to EtherNet/IP, the module provides an interface for data exchange to ControlLogix and CompactLogix platforms.

When connected to devices that provide more than one DF1 port, it is possible to implement DF1 communication redundancy with the use of two PLX51-DF1-MSG's. These can be configured in one of two modes, either *Simultaneous* or *Active / Standby*.

In the Simultaneous mode, both modules route the same traffic to the same Logix controller. Effectively, the Logix controller will receive two of each message and process both of them.

Active / Standby mode requires both modes to be Logix "Owned". One of the modules has its routing capability disabled, achieved by setting the Inhibit Routing bit in the output assembly. Logic in the Logix controller can monitor the connection and performance of the Active module and, if necessary, inhibit the Active module and un-inhibit the Standby module.

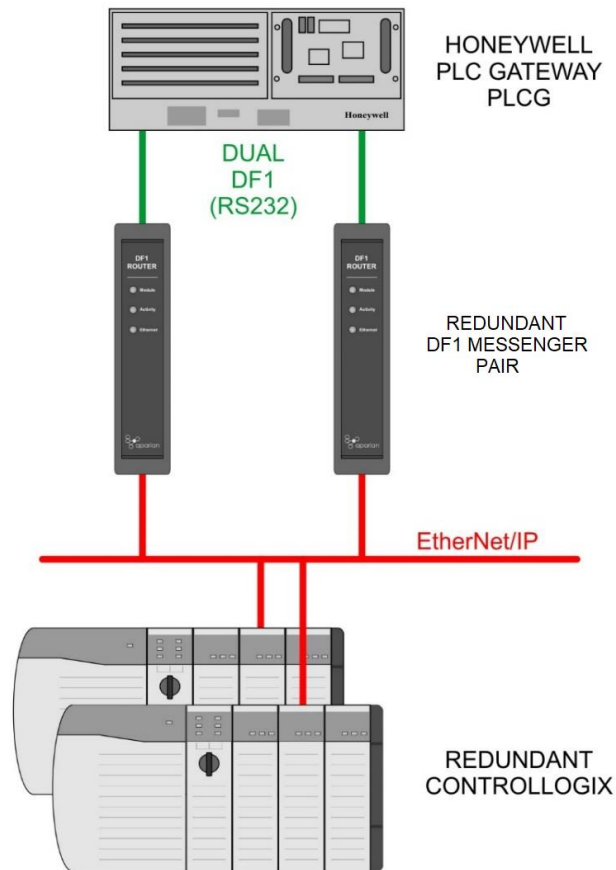


Figure 1.3. - Redundant Architecture

The PLX51-DF1-MSG can be used in redundant Logix controller systems.

Systems that rely on a central ControlLogix communicating to a number of remote DF1 devices, e.g. MicroLogix and SLC stations, may find the PLX51-DF1-MSG useful when upgrading to newer ControlLogix processors, which no longer have a serial port. These systems can easily be upgraded using the PLX51-DF1-MSG without affecting the existing and often costly wireless infrastructure.

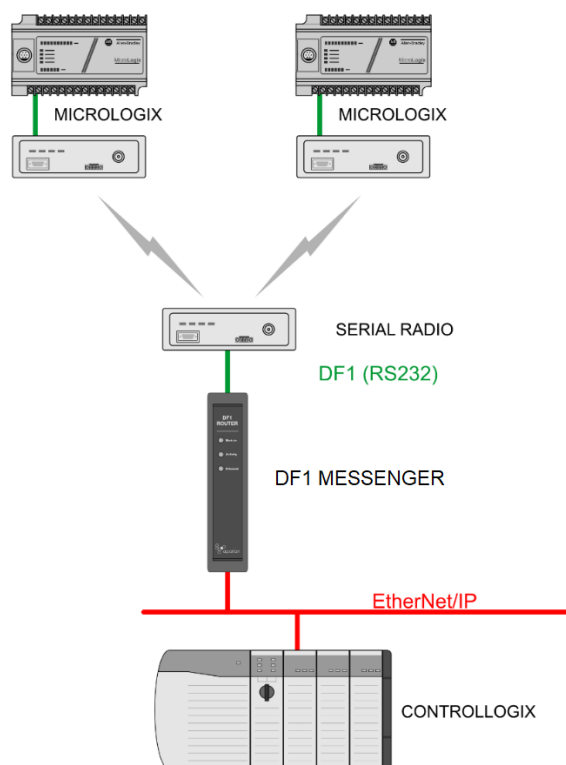


Figure 1.4. – Remote MicroLogix System

1.4. ADDITIONAL INFORMATION

The following documents contain additional information that can assist you with the module installation and operation.

Resource	Link
PLX50 Configuration Utility Software	www.prosoft-technology.com
PLX51-DF1-MSG User Manual PLX51-DF1-MSG Datasheet Example Code & UDTs	www.prosoft-technology.com
Ethernet wiring standard	www.cisco.com/c/en/us/td/docs/video/cds/cde/cde205_220_420/installation/guide/cde205_220_420_hig/Connectors.html
CIP Routing	The CIP Networks Library, Volume 1, Appendix C:Data Management
Map PLC/SLC messages	SLC to CompactLogix Migration Guide: Chapter 3 – Map PLC/SLC Messages (1769-ap001_-en-p.pdf) EtherNet/IP Network Configuration: Chapter 5 – Mapping Tags (enet-um001_-en-p.pdf)

Table 1.2. - Additional Information

2. INSTALLATION

2.1. MODULE LAYOUT

The PLX51-DF1-MSG has three ports at the bottom of the enclosure. The ports are used for Ethernet, RS232 serial, and power.

The power port uses a three-way connector which is used for the DC power supply; positive and negative (or ground) voltage, as well as the earth connection.

The RS232 port uses a four-way connector. This provides connection for the communication transmit (TX), receive (RX), and ground (GND) conductors. The fourth connection is used for shielding the cable in high-noise environments.

The Ethernet cable must be wired according to industry standards, which can be found in the additional information section of this document.

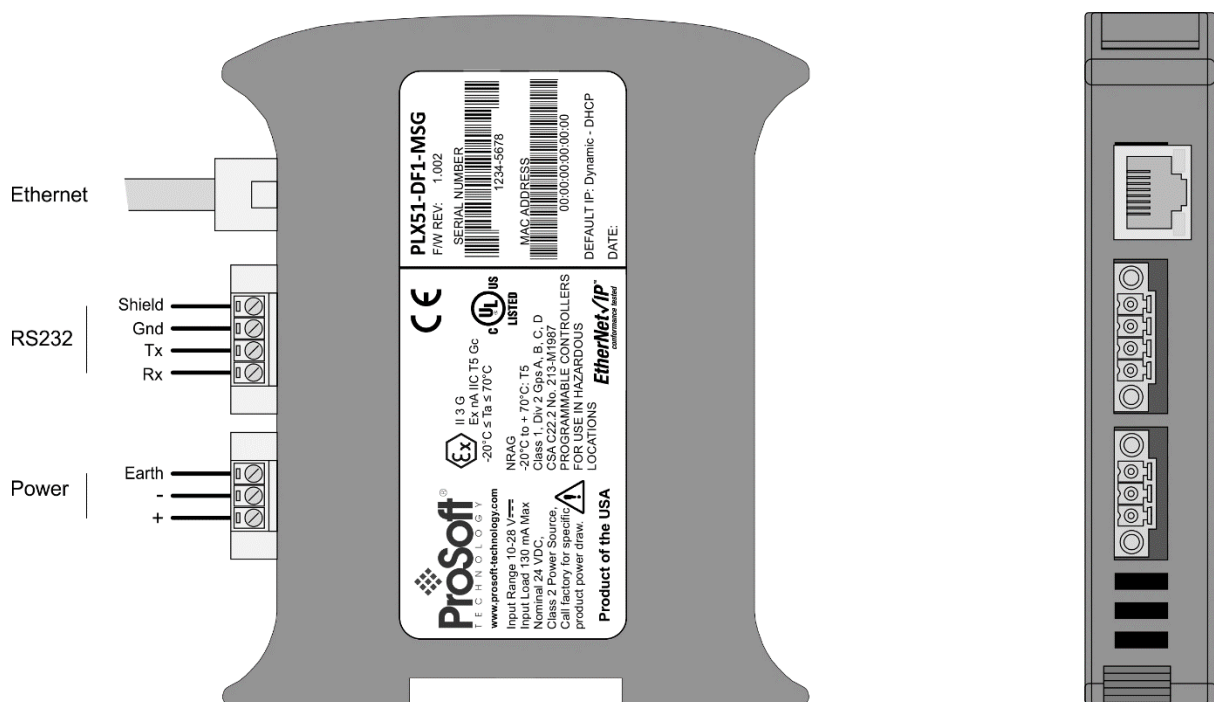


Figure 2.1. - PLX51-DF1-MSG side and bottom view

The module provides three diagnostic LEDs. These LEDs are used to provide information regarding the module system operation, the Ethernet interface, and the auxiliary communication interface (RS232).



Figure 2.2. – PLX51-DF1-MSG front and top view

The module provides four DIP switches at the top of the enclosure as shown in the top view figure above.

DIP Switch	Description
DIP Switch 1	Used to force the module into “Safe Mode”. When in “Safe Mode”, the module will not load the application firmware and will wait for new firmware to be downloaded. This should only be used in the rare occasion when a firmware update was interrupted at a critical stage.
DIP Switch 2	This will force the module into DHCP mode which is useful when you have forgotten the IP address of the module.
DIP Switch 3	Reserved
DIP Switch 4	Reserved

Table 2.1. - DIP Switch Settings

2.2. MODULE MOUNTING

The module provides a DIN rail clip to mount onto a 35mm DIN rail.

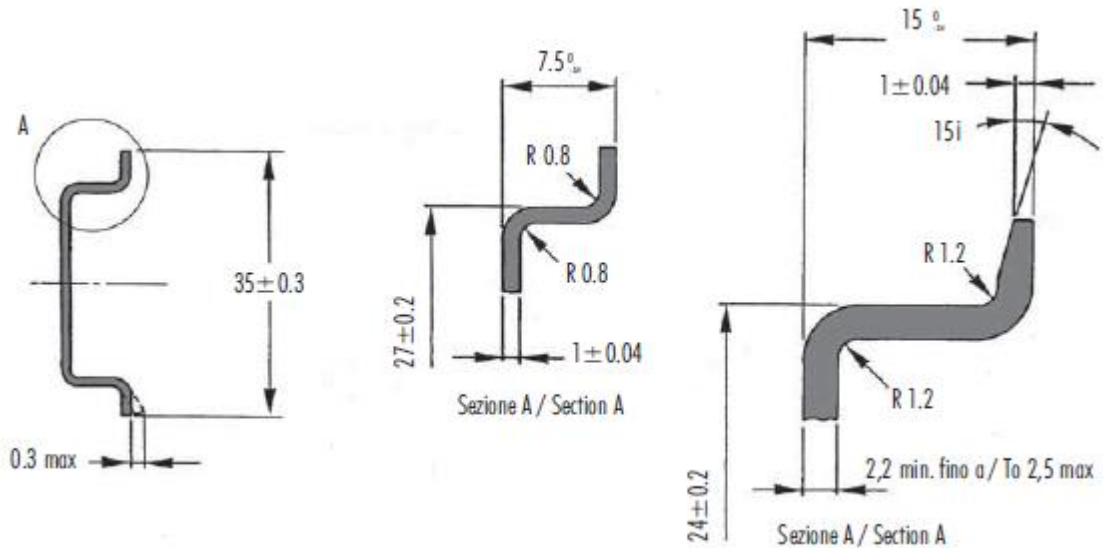


Figure 2.3 - DIN rail specification

The DIN rail clip is mounted on the bottom of the module, toward the back. Use a flat screw driver to pull the clip downward. This will enable you to mount the module onto the DIN rail. Once the module is mounted onto the DIN rail, the clip must be pushed upward to lock the module onto the DIN rail.



Figure 2.4 - DIN rail mounting

2.3. POWER

A three-way power connector is used to connect Power+, Power– (GND), and earth. The module requires an input voltage of 10 to 28 VDC. Refer to the technical specifications section in this document.

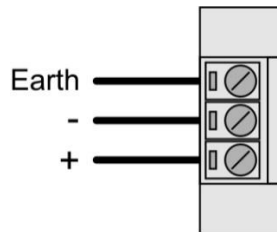


Figure 2.5 - Power connector

2.4. RS232 PORT

The four-way RS232 connector is used to connect the transmit (TX), receive (RX), and GND conductors for serial communication. The shield terminal can be used for shielded cable in high noise environments.



NOTE: The shield of the RS232 port is internally connected to the power connector earth. Thus, when using a shield it is important to connect the Earth terminal on the power connector to a clean earth. Failing to do this can lower the signal quality of the RS232 communication.



NOTE: When using a shielded cable, it is important that only one end of the shield is connected to earth to avoid current loops. It is recommended to connect the shield to the PLX51-DF1-MSG module, and not to the other DF1 device.

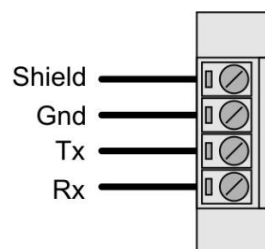


Figure 2.6 - RS232 connector

2.5. ETHERNET PORT

The Ethernet connector should be wired according to industry standards. Refer to the additional information section in this document for further details.

3. SETUP

3.1. INSTALL CONFIGURATION SOFTWARE

The network setup and configuration of the PLX51-DF1-ENI is done in the ProSoft PLX50 Configuration Utility. This software can be downloaded from www.prosoft-technology.com



Figure 3.1. - ProSoft PLX50 Configuration Utility Environment

3.2. NETWORK PARAMETERS

The module has DHCP (Dynamic Host Configuration Protocol) enabled as factory default. Thus, a DHCP server must be used to provide the module with the required network parameters (IP address, subnet mask, etc.). There are a number of DHCP utilities available, however it is recommended that the DHCP server in the PLX50 Configuration Utility be used.

Within the PLX50 Configuration Utility environment, the DHCP server can be found under the Tools menu.

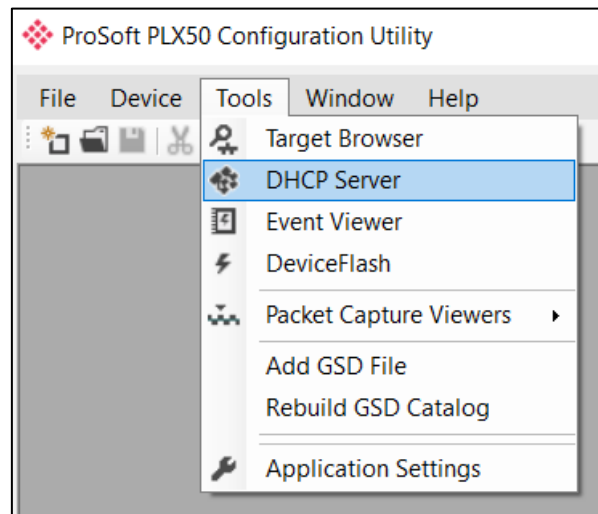


Figure 3.2. - Selecting DHCP Server

Once opened, the DHCP server will listen on all available network adapters for DHCP requests and display their corresponding MAC addresses.

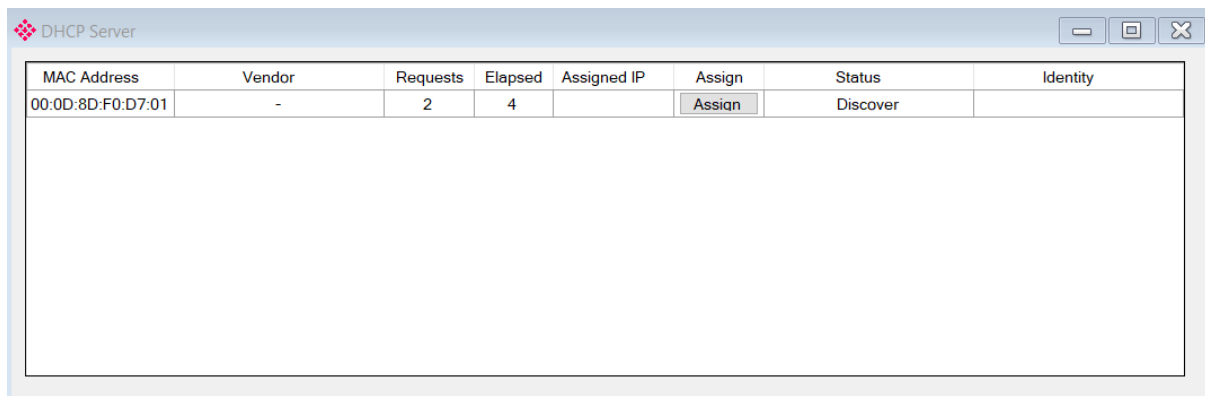


Figure 3.3. - DHCP Server



NOTE: If the DHCP requests are not displayed in the DHCP Server, it may be due to the local PC's firewall. During installation the necessary firewall rules are automatically created for the Windows firewall.

Another possibility can be another DHCP Server is operational on the network and it has assigned the IP address.

To assign an IP address, click on the corresponding “Assign” button. The IP Address Assignment window opens.

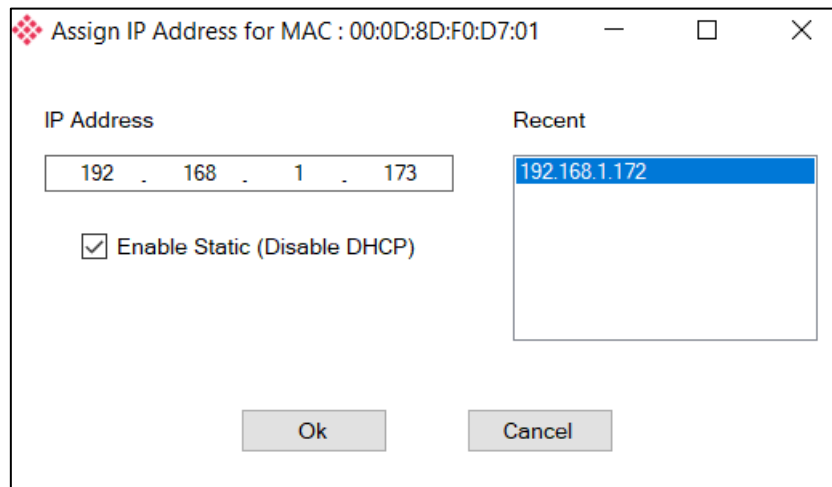


Figure 3.4. - Assigning IP Address

The required IP address can then be either entered, or a recently used IP address can be selected by clicking on an item in the Recent List.

If the “Enable Static” checkbox is checked, then the IP address will be set to static after the IP assignment, thereby disabling future DHCP requests.

Once the IP address window has been accepted, the DHCP server will automatically assign the IP address to the module and then read the Identity object Product name from the device.

The successful assignment of the IP address by the device is indicated by the green background of the associated row.

MAC Address	Vendor	Requests	Elapsed	Assigned IP	Assign	Status	Identity
00:0D:8D:F0:D7:01	-	34	2	192.168.1.173	Assign	Set Static	DF1 Messenger

Figure 3.5. - Successful IP address assignment

It is possible to force the module back into DHCP mode by powering up the device with DIP switch 2 set to the On position.

A new IP address can then be assigned by repeating the previous steps.



NOTE: It is important to return DIP switch 2 back to Off position, to avoid the module returning to a DHCP mode after the power is cycled again.

In addition to the setting the IP address, a number of other network parameters can be set during the DHCP process. These settings can be viewed and edited in the PLX50 Configuration Utility Application Settings, in the DHCP Server tab.

Once the DHCP process has been completed, the network settings can be set using the Ethernet Port Configuration via the Target Browser.

The Target Browser can be accessed under the Tools menu.

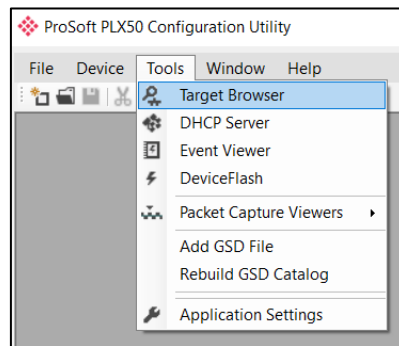


Figure 3.6. - Selecting the Target Browser

The Target Browser automatically scans the Ethernet network for EtherNet/IP devices.

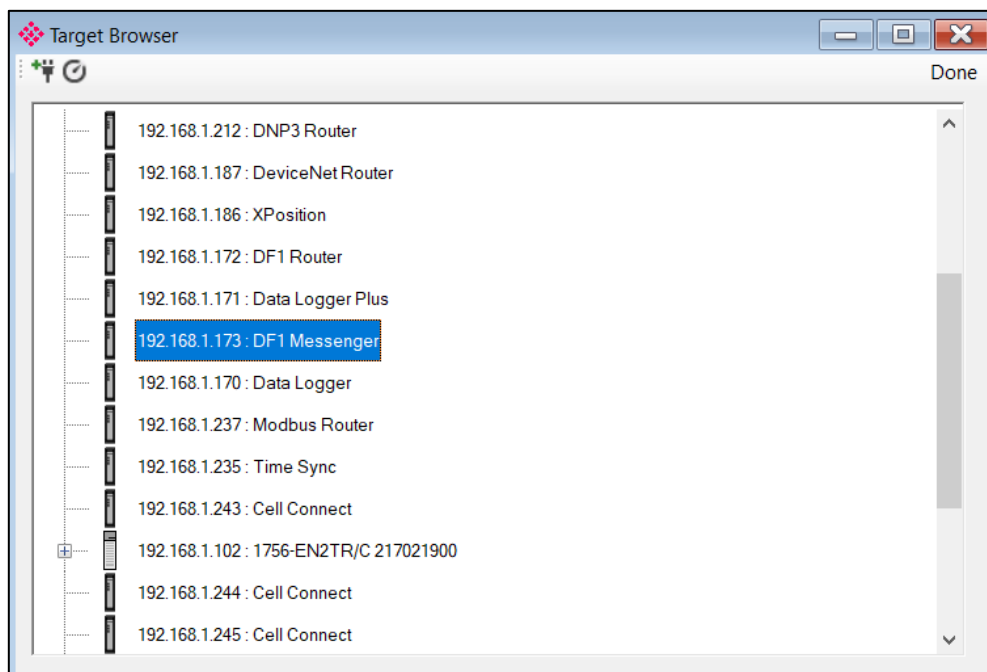


Figure 3.7. - Target Browser

Right-clicking on a device, reveals the context menu, including the Port Configuration option.

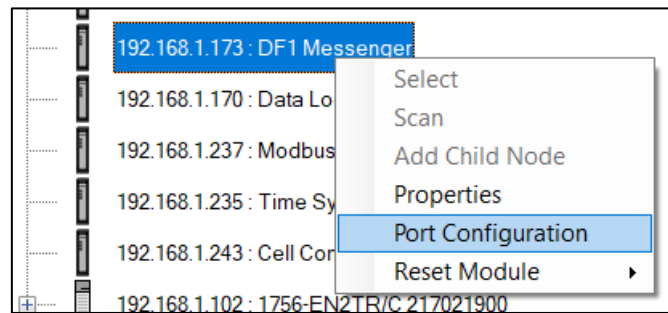


Figure 3.8. - Selecting Port Configuration

The Ethernet port configuration parameters can be modified using the Port Configuration window.

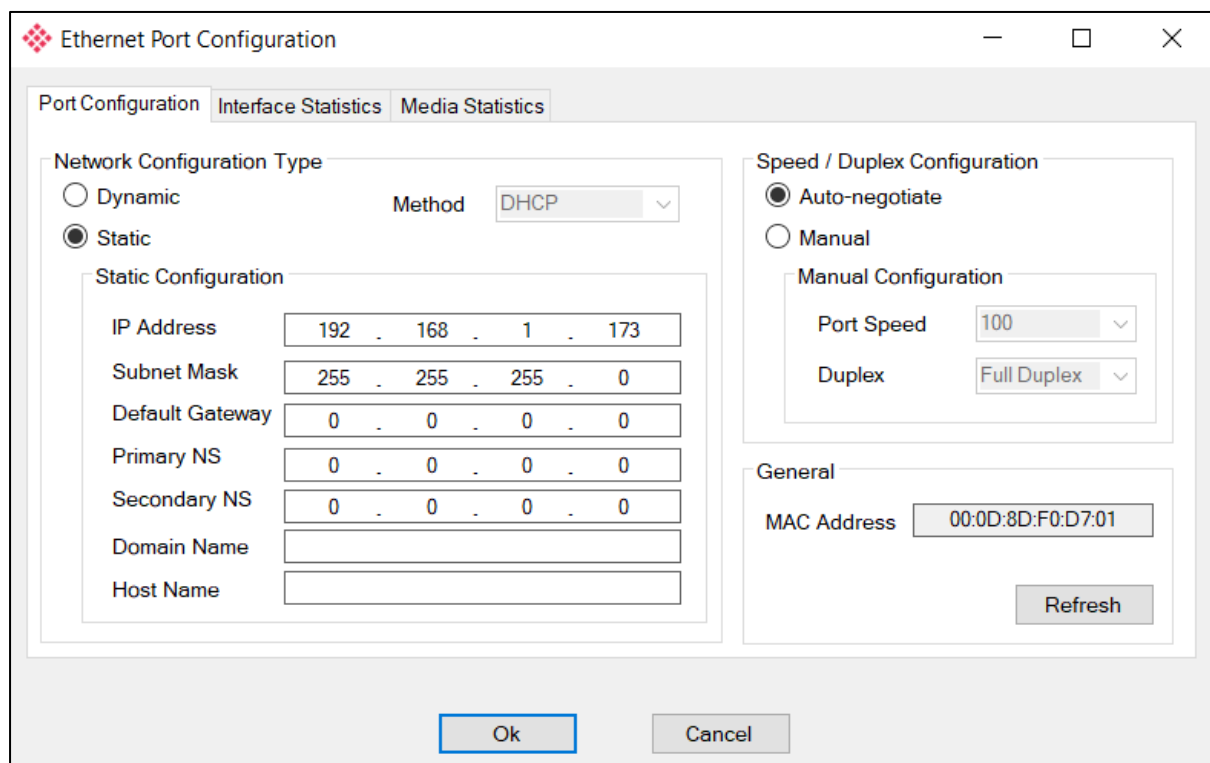


Figure 3.9. - Port Configuration

Alternatively, these parameters can be modified using RSLinx.

3.3. CREATING A NEW PROJECT

Before you configure the module, a new PLX50 Configuration Utility project must be created. Under the File menu, select New.

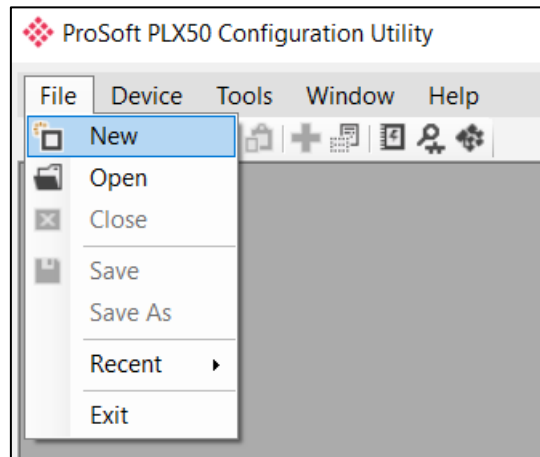


Figure 3.10. - Creating a new project

A PLX50 Configuration Utility project will be created, showing the Project Explorer tree view. To save the project use the Save option under the File menu.

Select Add under the Device menu.

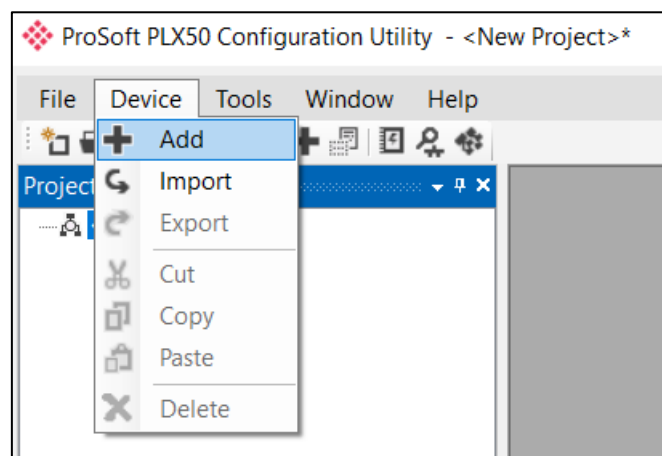


Figure 3.11. - Adding a new device

In the Add New Device window, select the PLX51-DF1-MSG, and click the Ok button.

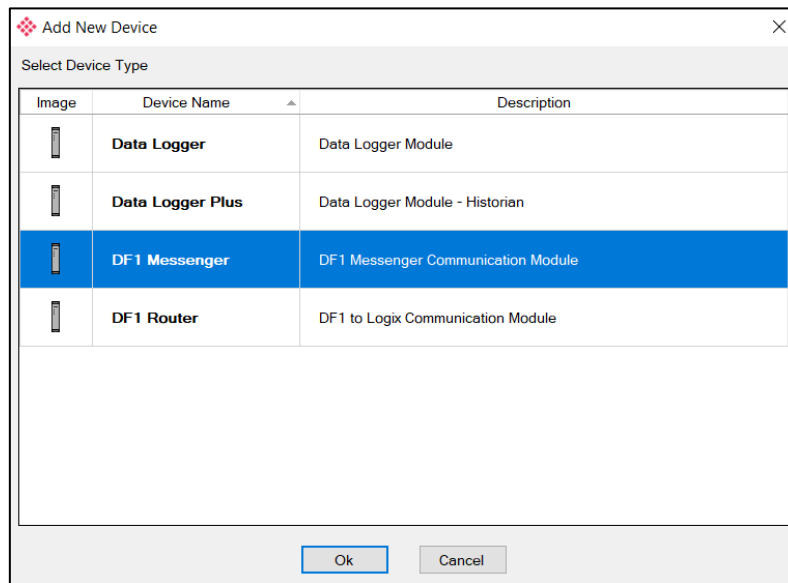


Figure 3.12 – Selecting a new PLX51-DF1-MSG

The device appears in the Project Explorer tree as shown below, and its configuration window opened.

The device configuration window can be reopened by either double clicking the module in the Project Explorer tree or right-clicking the module and selecting *Configuration*.

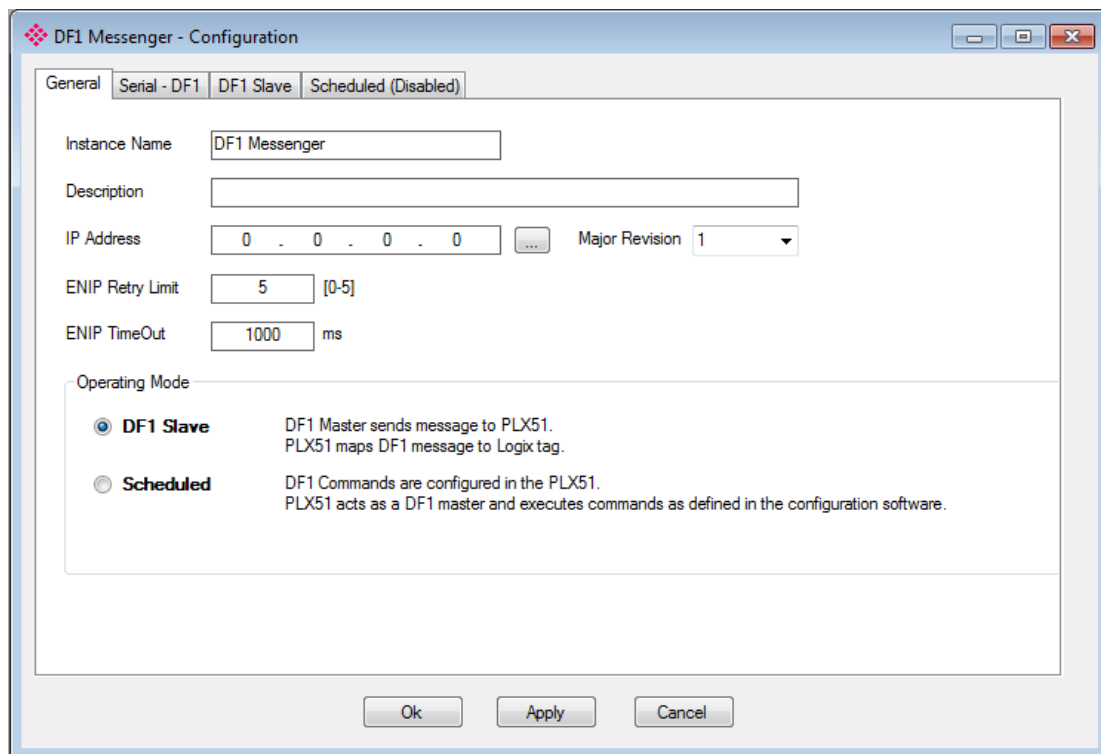


Figure 3.13. – PLX51-DF1-MSG configuration

3.4. DF1 PARAMETERS

The DF1 parameters are configured by the PLX50 Configuration Utility. Refer to the additional information section for documentation and installation links for the ProSoft PLX50 Configuration Utility. The DF1 parameter configuration consists of a general configuration as well as a serial configuration. When downloading the configuration into the module, it will be saved in non-volatile memory that persists when the module is powered down.



NOTE: When a firmware upgrade is performed, the module will clear all DF1 configuration and routing maps.

The general configuration consists of the following parameters:

Parameter	Description
Instance Name	This parameter is a user defined name to identify between various PLX51-DF1-MSG's.
Description	This parameter is used to provide a more detailed description of the application for the PLX51-DF1-MSG.
IP Address	IP address of the PLX51-DF1-MSG.
Major Revision	The major revision of the PLX51-DF1-MSG.
ENIP Retry Limit	The amount of EtherNet/IP retries the module will make once no response was received from the Logix Controller.
ENIP TimeOut	The time in milliseconds after which a retry is sent. Once the first retry is sent, the next retry will be sent after the same amount of time. This will repeat until the ENIP Retry Limit is reached.
Operating Mode	<p>The Operating Mode determines how the DF1 messages are routed.</p> <p>In DF1 Slave mode, the module automatically routes the DF1 message and function to the correct Logix tag. In this mode, the PLX51-DF1-MSG maps the DF1 request to the preconfigured tag.</p> <p>Communication in this mode is initiated by the remote DF1 device.</p> <p>In Scheduled mode, the PLX51-DF1-MSG initiates the exchange between the remote DF1 device and Logix. Either by reading data from a DF1 device and writing it into a preconfigured Logix tag or vice versa.</p> <p>Communication in this mode is initiated by the PLX51-DF1-MSG.</p> <p>Refer to the message routing section of the document for a detailed explanation of the routing operation.</p>

Table 3.1 - General configuration parameters

The general configuration is shown in the figure below. The DF1 general configuration window is opened by either double clicking on the module in the tree or right-clicking the module and selecting *Configuration*.

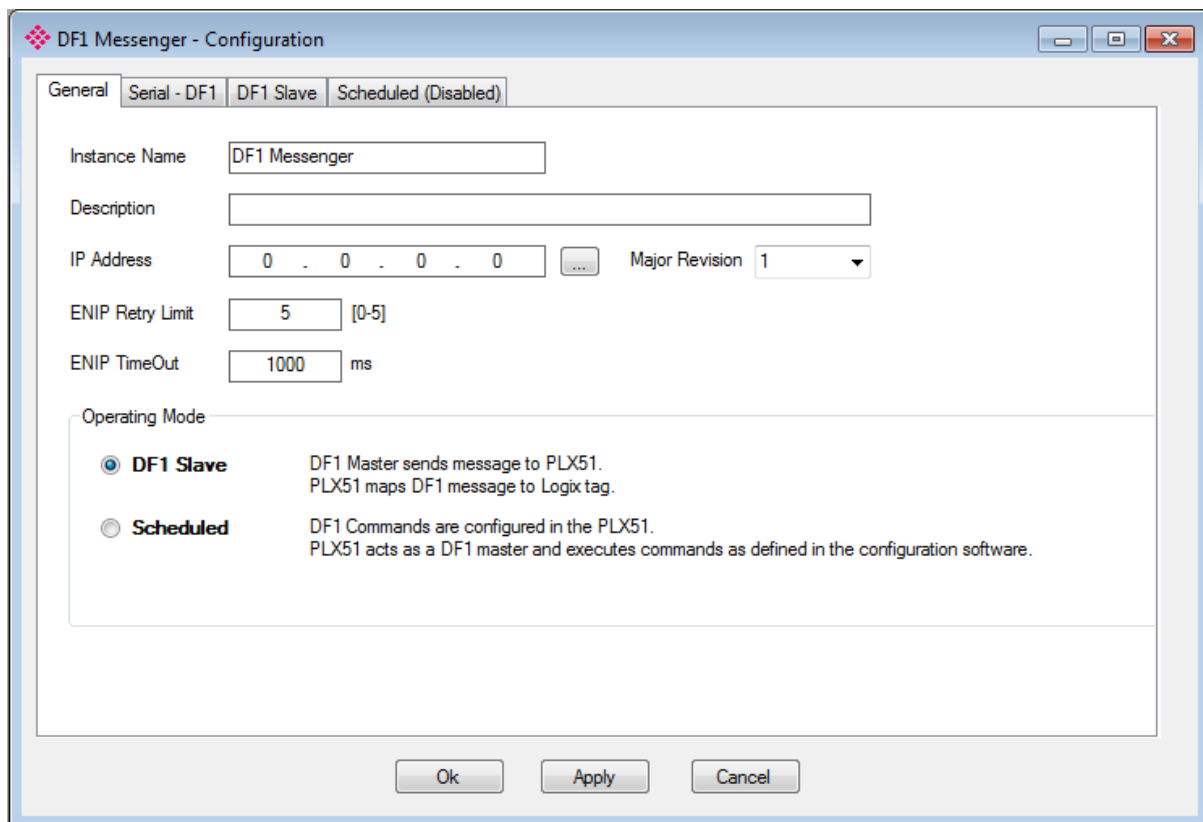


Figure 3.14. - General Configuration

The Serial – DF1 configuration consists of the following parameters:

Parameter	Description
Protocol	The protocol parameter configures the module to operate in full duplex, half duplex, or Radio Modem mode on the DF1 network.
BAUD Rate	The BAUD rate configures at what speed the data is sent across the RS232 serial network. The module provides the following speeds: 1200, 2400, 4800, 9600, 19200, 38400, 57600, and 115200
Parity	The parity parameter configures the parity of the module's RS232 serial port. The module allows for Even, Odd, or None parity setting.
Error Detection	The module can be configured to perform either BCC or CRC checksum validation on incoming and outgoing packets. CRC checksums is a much stronger validation method when compared to BCC but is more processor intensive to perform.
Embedded Response	This parameter configures the module to add the acknowledge responses in the data payload. You can configure the module to be Auto Detect or On. This function is only available in Full Duplex mode.
Node Address	The node address is dynamically changed to suite the required mapping.
Retry Limit	The retry limit determines how many times the module must retry and message exchange before failing it.
ACK Timeout	The ACK timeout is used to determine the interval between retries when a message exchange has failed.
Reply Msg Wait	The reply message wait is the minimum delay before the DF1 reply is transmitted to the DF1 device.
Duplicate Detection	This parameter configures the module to check for duplicate packets and flagging them when they occur.
Enable Store and Forward	When using the Radio Modem protocol, the PLX51-DF1-MSG can be used to repeat messages from other nodes on the radio network (only relevant for DF1 Radio Modem protocol).
Repeat Delay	When repeating packets from other nodes on the Radio network, this setting determines the delay before repeating the packet (only relevant for DF1 Radio Modem protocol).
Nodes to Repeat	When Store and Forward has been enabled, the Nodes to Repeat list is all the nodes numbers of the devices from which the PLX51-DF1-MSG must repeat the messages (only relevant for DF1 Radio Modem protocol).

Table 3.2 - Serial DF1 configuration parameters

The serial DF1 configuration is shown in the figure below. The DF1 Serial configuration window is opened by either double clicking on the module in the tree or right-clicking the module and selecting *Configuration*. In the configuration window, select the second tab at the top *Serial – DF1*.

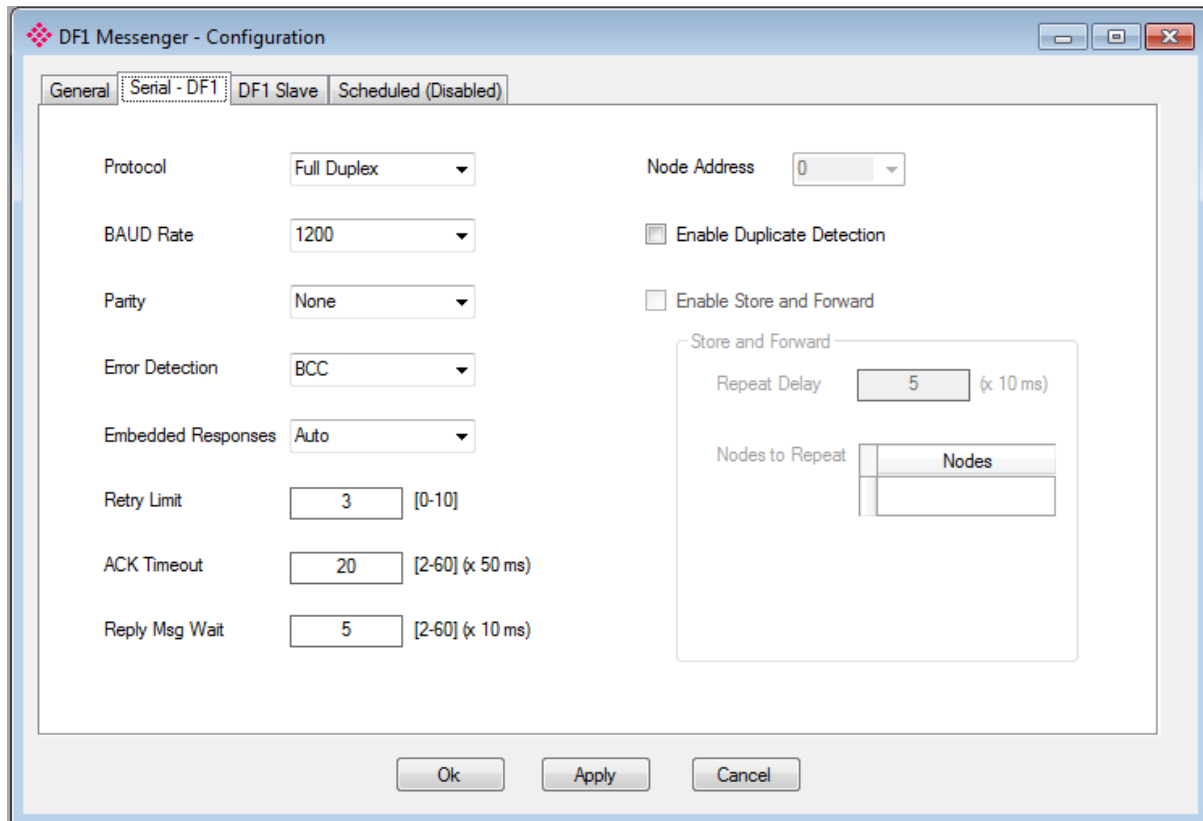


Figure 3.15 - Serial DF1 configuration

3.5. MESSAGE ROUTING

The module can be configured to route DF1 data in one of three modes:

- DF1 Slave mode
- Schedule Tag mode

3.5.1. DF1 SLAVE MODE

The DF1 Slave mode allows mapping of virtual Data Files to Logix tags across multiple controllers. The mapping of data files to Logix tags is managed in the PLX51-DF1-MSG itself.

Thus, the routing of the Node address to Logix controller as well as DF1 File Number to a Logix tag is managed by the PLX51-DF1-MSG. In the DF1 Slave mode, the PLX51-DF1-MSG can operate completely independently from the Logix controller by directly reading and writing to Logix tags.



NOTE: The DF1 Slave mode only works with PLC5, SLC Typed Read and Write messages as well as PLC2 Unprotected Read and Write messages.

DF1 Messenger - Configuration

General Serial - DF1 **DF1 Slave** Scheduled (Disabled)

Logix Controller Mapping (max. of 8 items.)

	Target Name	Logix Controller Path	Browse
▶	NorthCPU	192.168.1.102,1,2	<input type="button" value="Browse"/>
*			<input type="button" value="Browse"/>

Logix Tag Mapping (max. of 20 items.)

	DF1 Node	Data File	Target Name	Target Tag	Browse
*	<input type="button" value="Browse"/>		<input type="button" value="Browse"/>		<input type="button" value="Browse"/>

Ok Apply Cancel

Figure 3.16. - DF1 Slave mode configuration

The DF1 Slave mode is configured in two steps. First, you must create a Target Name (CIP path to the destination Logix controller) which will be used to link the DF1 File Number to the destination Logix tag. When using PLC2 messages, the Target will be linked to the DF1 Node Number. Therefore, if the device sending out PLC2 requests wants to access multiple Target Tags, it will need to differentiate by using different Node Numbers.

The Logix controller paths can either be entered manually or you can browse to them by clicking the Browse button. The Target Browser will open and automatically scan for all available EtherNet/IP devices.

If the EtherNet/IP module is a bridge module, it can be expanded by right-clicking on the module and selecting the Scan option.

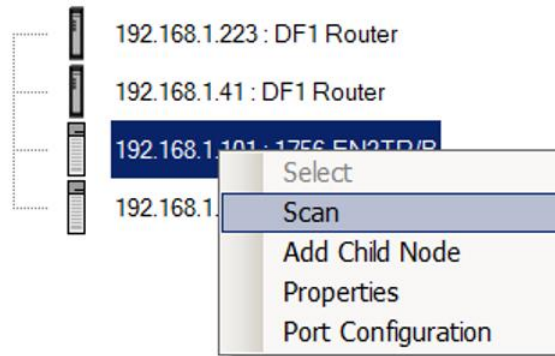


Figure 3.17. - Scanning node in the Target Browser

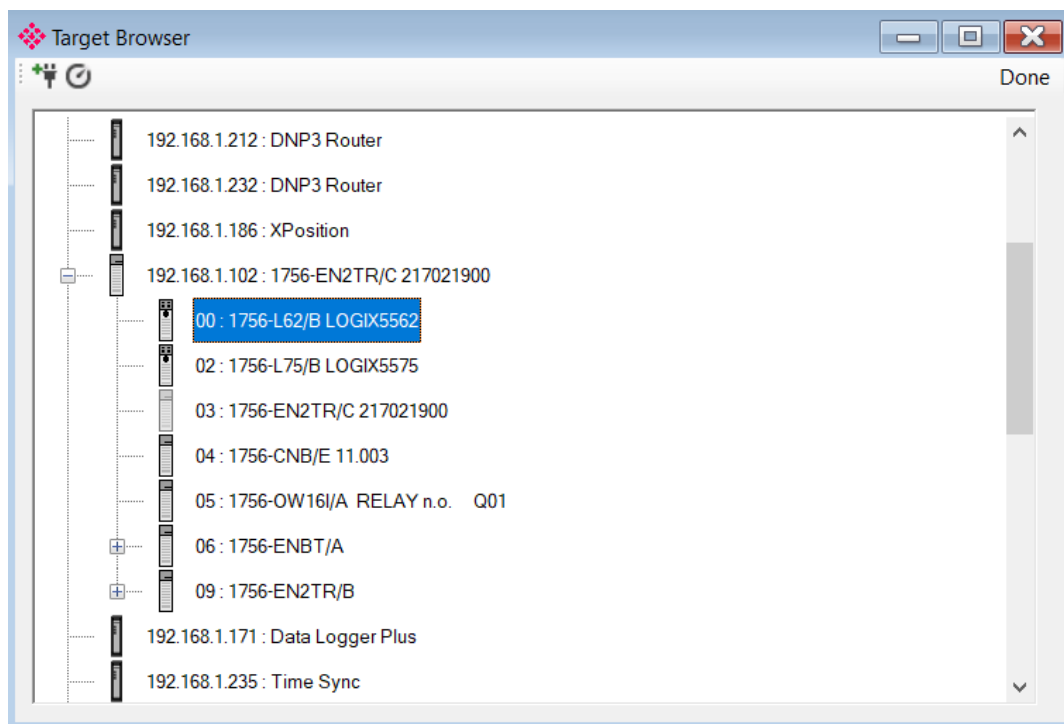


Figure 3.18. - Target Browser selection

The required Logix controller can then be chosen by selecting it and clicking the Ok button, or by double-clicking on the controller module.

A maximum number of 8 controller mapping entries can be added.

The second part of the DF1 Slave mode is to configure the link between a DF1 node and File Number combination to a Logix tag. This will allow the DF1 message initiator to effectively write to, or read from, a Logix tag using traditional File Numbers (e.g. N7, F8, etc.).

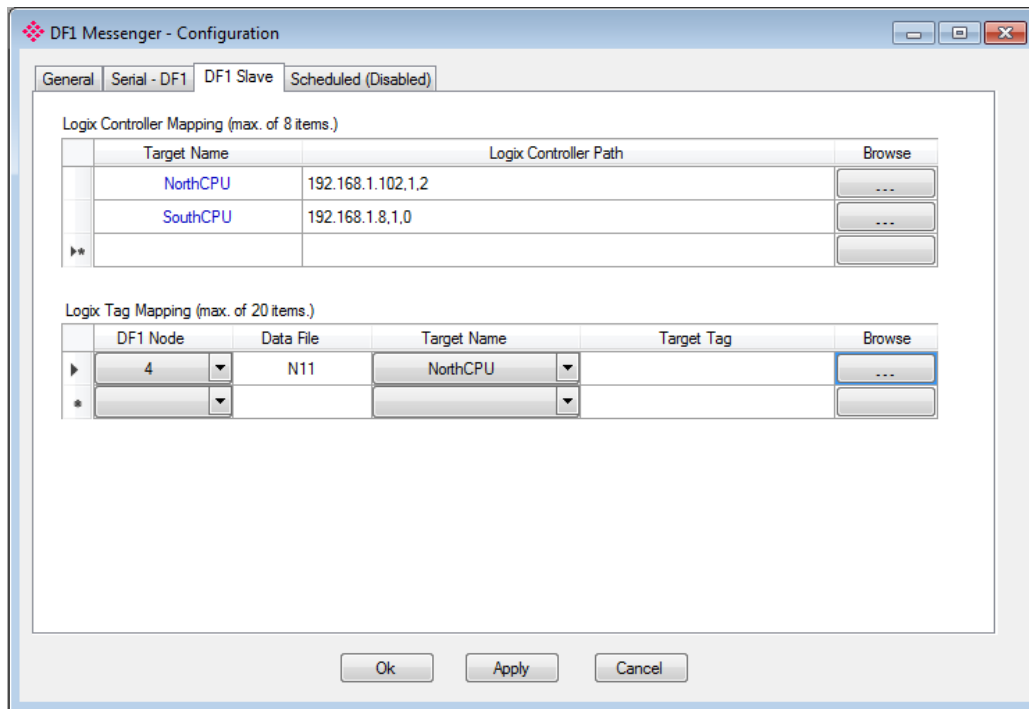


Figure 3.19. – DF1 Slave Mapping



NOTE: When using PLC-2 messages, there are no data files. You are required to enter **PLC2** in the space of the data file as shown below. Only the DF1 Node address will be used to link the selected Target Tag to the incoming PLC2 DF1 message.

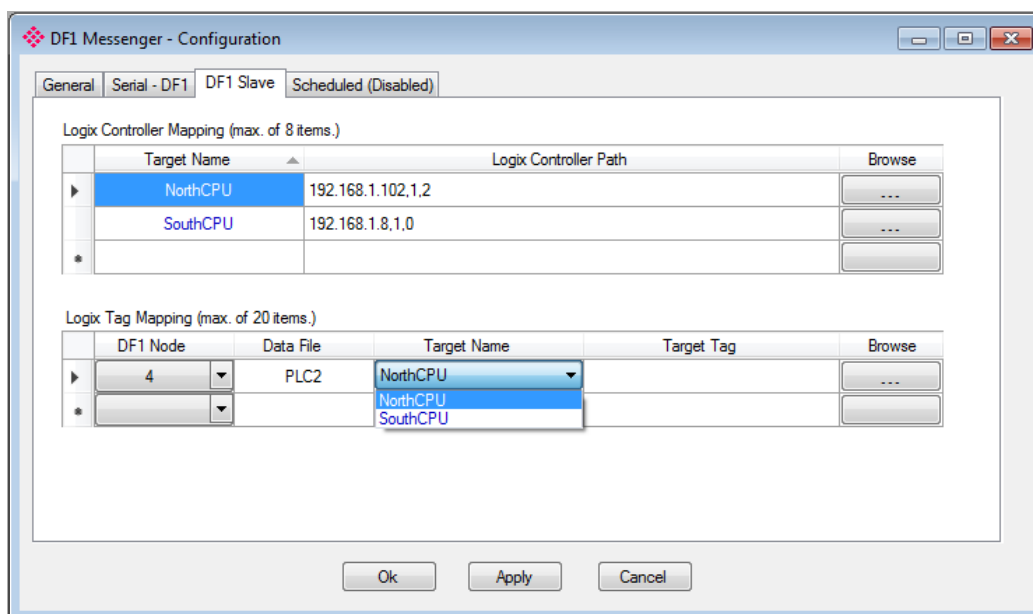


Figure 3.20 – DF1 Slave Mapping (PLC2 Messages)



NOTE: When using Unprotected Bit Write PLC-2 messages only one byte worth of bits can be written at a time.

The module can emulate more than one destination DF1 Node Address, and thus route multiple messages to different Logix controllers. It is important to enter the correct associate DF1 Node address in each mapping record.

The next column is used to enter the DF1 data file. It is important to enter only the file here (e.g. N11) and not a data word address (e.g. N11:0). The first element of the entered DF1 file (e.g. N11:0) will then map to the first element of the Logix array and so on. When using PLC2 messages, type in “PLC2” into the Data File field as shown in figure 3.27.

Below is an example of the target tag selection. The Target Tag can be either entered manually or selected using the Tag Browser in the PLX50 Configuration Utility. The Tag Browser requires the controller to be available on the network.

To browse to the tag, click on the Browse button. The Tag Browser opens and scans all the tags inside that controller. If the controller has been recently scanned in this session, then a cached version of the tags is displayed. A rescan of the tags can be triggered by selecting the Refresh button in the Tag Browser’s toolbar.



NOTE: When mapping PLC5 Boolean files (e.g. B3), it is recommended that the destination Logix tag be a SINT array.



NOTE: When mapping PLC2 messaging, only INT datatypes will be supported. Thus the Target Tag must be an array of INTs.

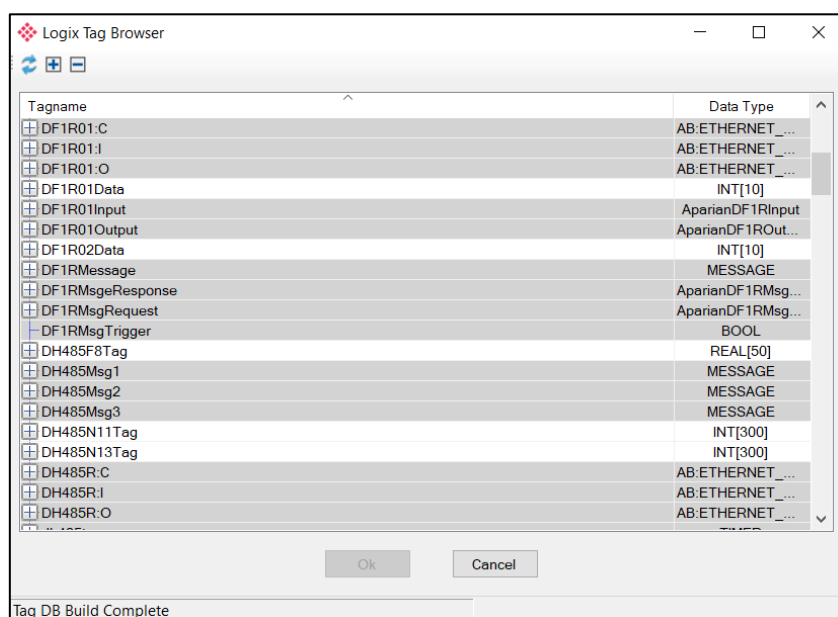


Figure 3.21 – Tag Browser tag selection

The two figures below show how DF1 messages are routed to the Logix tags using the DF1 Slave Map mode.



NOTE: It is your responsibility to ensure that the Logix tag array datatype and size matches that of the DF1 File Number. Failing to do this can result in communication faults.

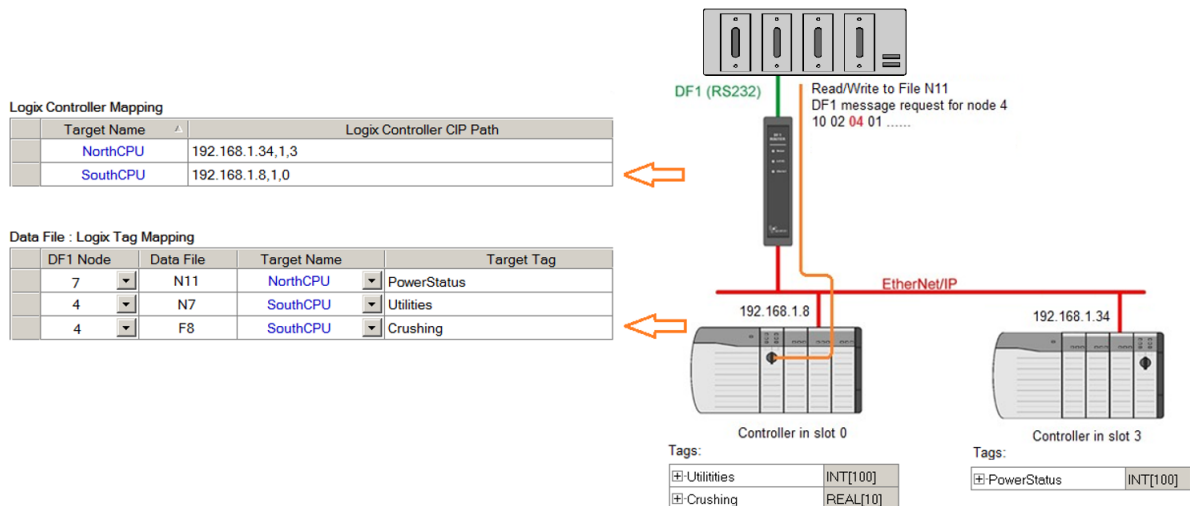


Figure 3.22 - DF1 Slave mode configuration in the PLX50 Configuration Utility

When receiving PLC2 messages, the Data File entered into the PLX50 Configuration Utility will be "PLC2" because there are no Data Files in PLC2 message structures. Thus, the DF1 Node address will be used to route the messages as shown below:



NOTE: It is your responsibility to ensure that the Logix tag array datatype and size matches that of the PLC2 DF1 request. Failing to do this can result in communication faults.

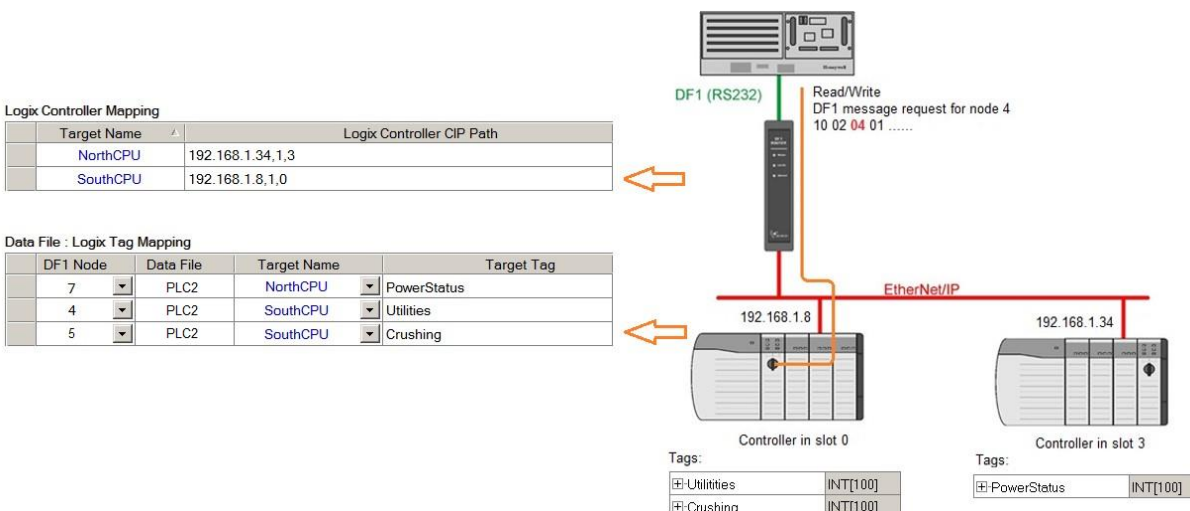


Figure 3.23 DF1 Slave mode config in the PLX50 Configuration Utility (PLC2 messages)

3.5.2. SCHEDULED TAG MODE

The Scheduled Tag routing mode transfers data between a DF1 device and one or more Logix controllers (the PLX51-DF1-MSG initiates the messaging when in the Scheduled Tag mode).

In this mode, the PLX51-DF1-MSG transfers data between a Logix controller and a DF1 device without any configuration or programming required in either the DF1 device or the Logix controller.

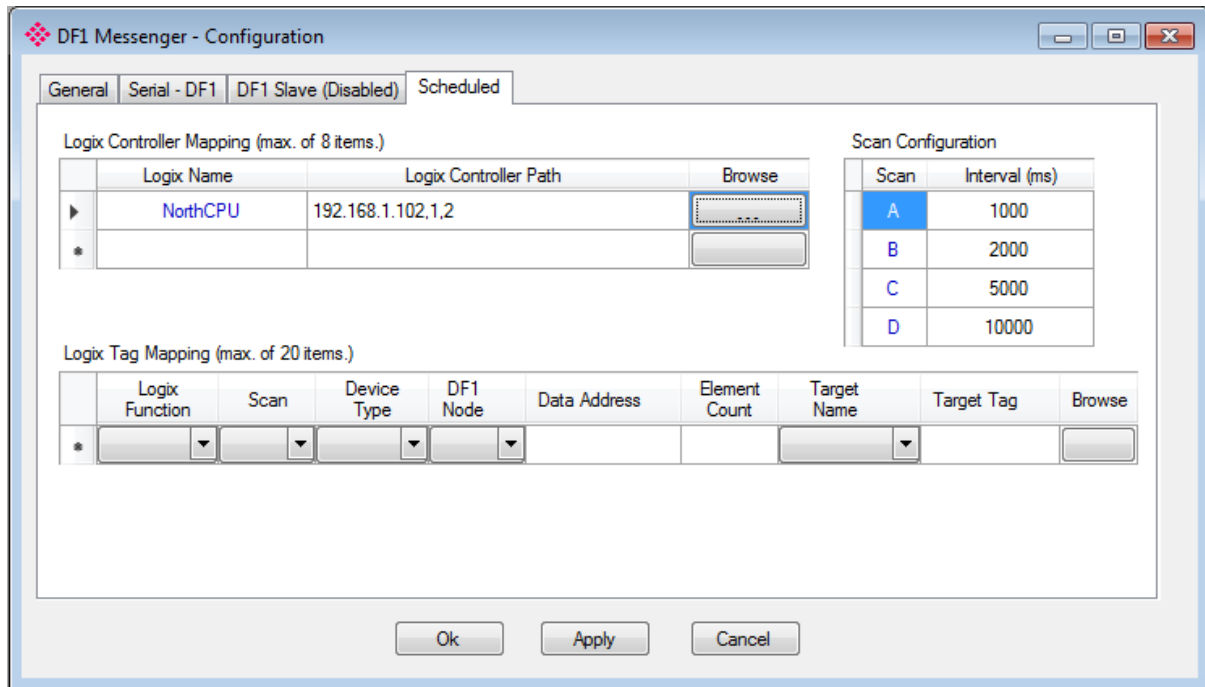


Figure 3.24 - Scheduled Tag configuration

The Schedule Tag mode is configured in three steps. First, you must create a Target Name (CIP path to the destination Logix controller) which will be used to link the DF1 File Number to the destination Logix tag.

The Logix controller paths can either be entered manually or you can browse to them by clicking the Browse button. The Target Browser opens and automatically scans for all available EtherNet/IP devices.

If the EtherNet/IP module is a bridge module, it can be expanded by right-clicking on the module and selecting the Scan option.

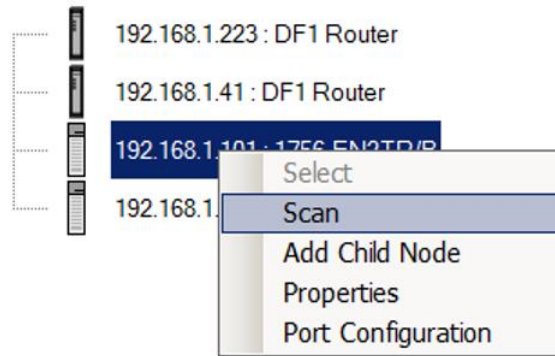


Figure 3.25 - Scanning node in the Target Browser`

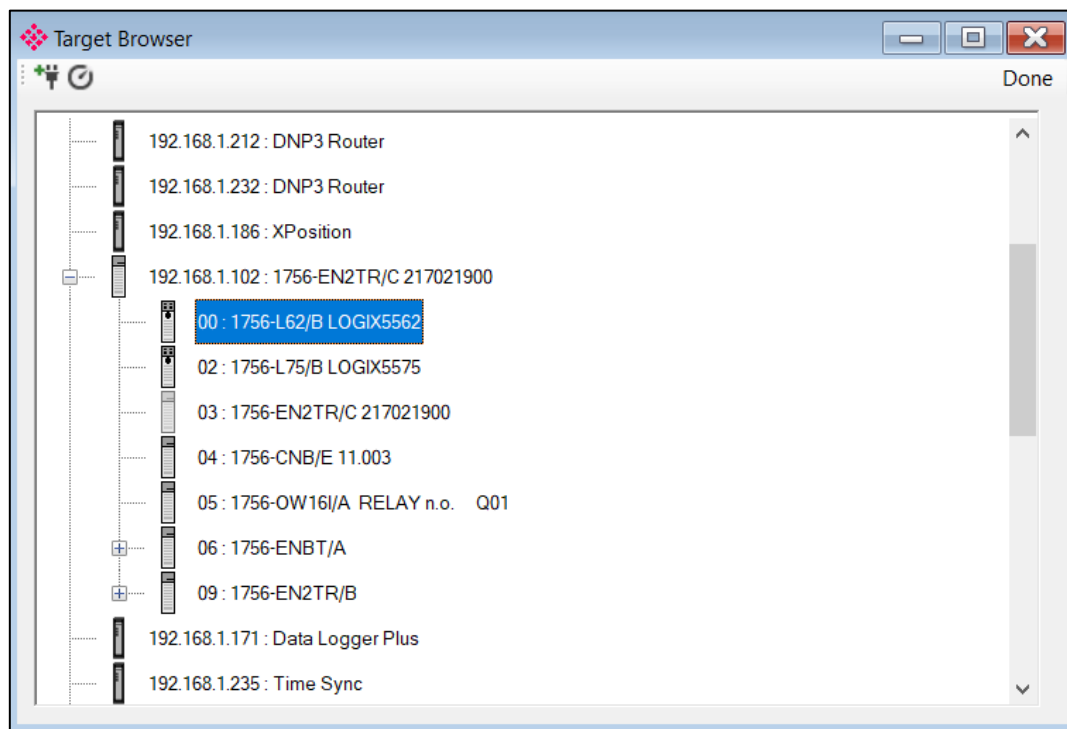


Figure 3.26 - Target Browser selection

The required Logix controller can then be chosen by selecting it and clicking the Ok button, or by double-clicking on the controller module.

A maximum number of 8 controller mapping entries can be added.

The second step is to configure the scan intervals. The scan intervals allow different data items to be transferred at different rates. There are 4 scan classes: A, B, C and D. The intervals for each can be adjusted by entering the scan time in milliseconds. The interval must be between 200 milliseconds and 60 seconds.

The third step is to configure the link between a DF1 node and File Number combination to a Logix tag, and the associated action and scan required.

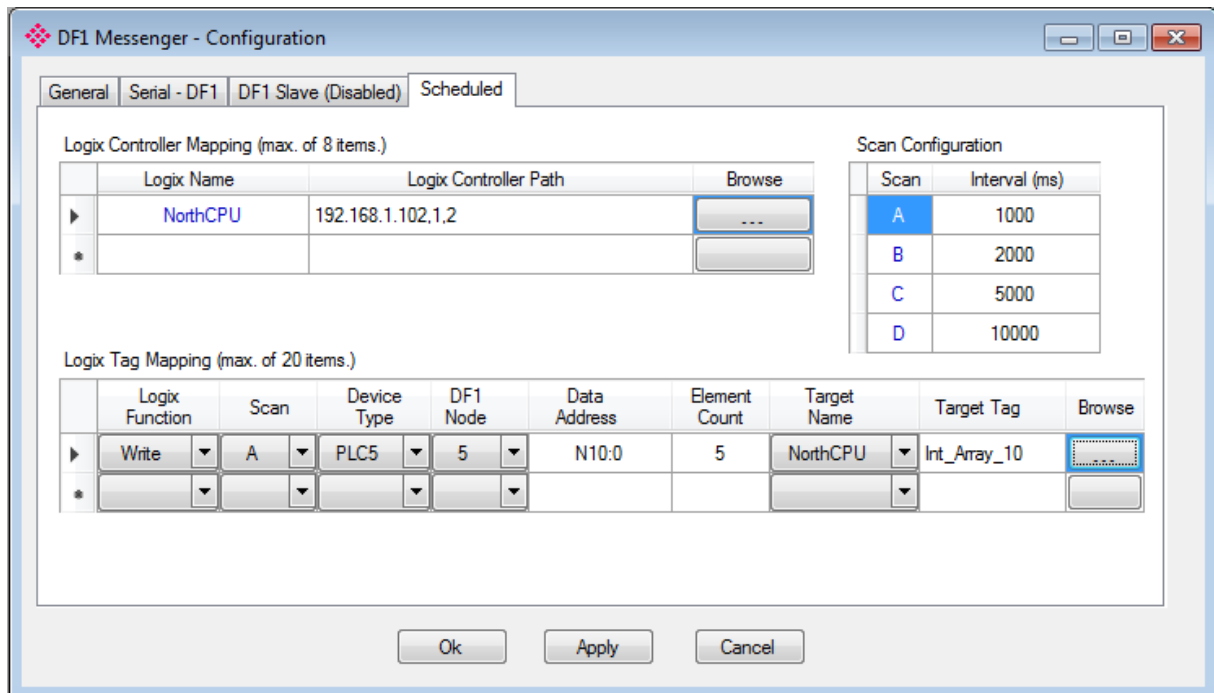


Figure 3.27 - Scheduled Tag Mapping

The Logix Function field specifies whether the transaction will result in a read or write from the Logix controller's perspective.

The Scan field specifies at what rate the transaction will be executed. Select a scan class letter that matches the required interval. Care must be taken to select a realistic scan interval, taking into account the configured Baud rate and message size.

The Device Type field specifies the type of message that will be sent to the DF1 device. There are two options: PLC5 and SLC. The latter should be selected when using a MicroLogix device.

The DF1 Node is the remote device's node.

The Data Address is the remote device's address and should be specified to the element level. For example, N10:0. Note that this differs from the DF1 Slave configuration where only the file is specified.

The Element Count is the number of items to be read or written. In the example above, with a Data Address of N10:0 and an Element Count of 5, then N10:0 through N10:4 will read from the DF1 device and written to Logix.

One of the Target Names configured in the first step can be selected by means of the target Name combo box.

The Target Tag can be either entered manually or selected using the Tag Browser in the PLX50 Configuration Utility. The Tag Browser requires the controller to be available on the network.

To browse to the tag, click on the Browse button. The Tag Browser opens and scans all the tags inside that controller. If the controller has been recently scanned in this session, then a cached version of the tags will be displayed. A rescan of the tags can be triggered by selecting the Refresh button in the Tag Browser's toolbar.

Only tags of a relevant type will be enabled, guiding you to select a suitable tag.



NOTE: When mapping PLC5 Boolean files (e.g. B3), it is recommended that the destination Logix tag be a SINT array, rather than a Boolean array. Using the latter may result in unexpected results due to the packing format of Logix Boolean arrays.

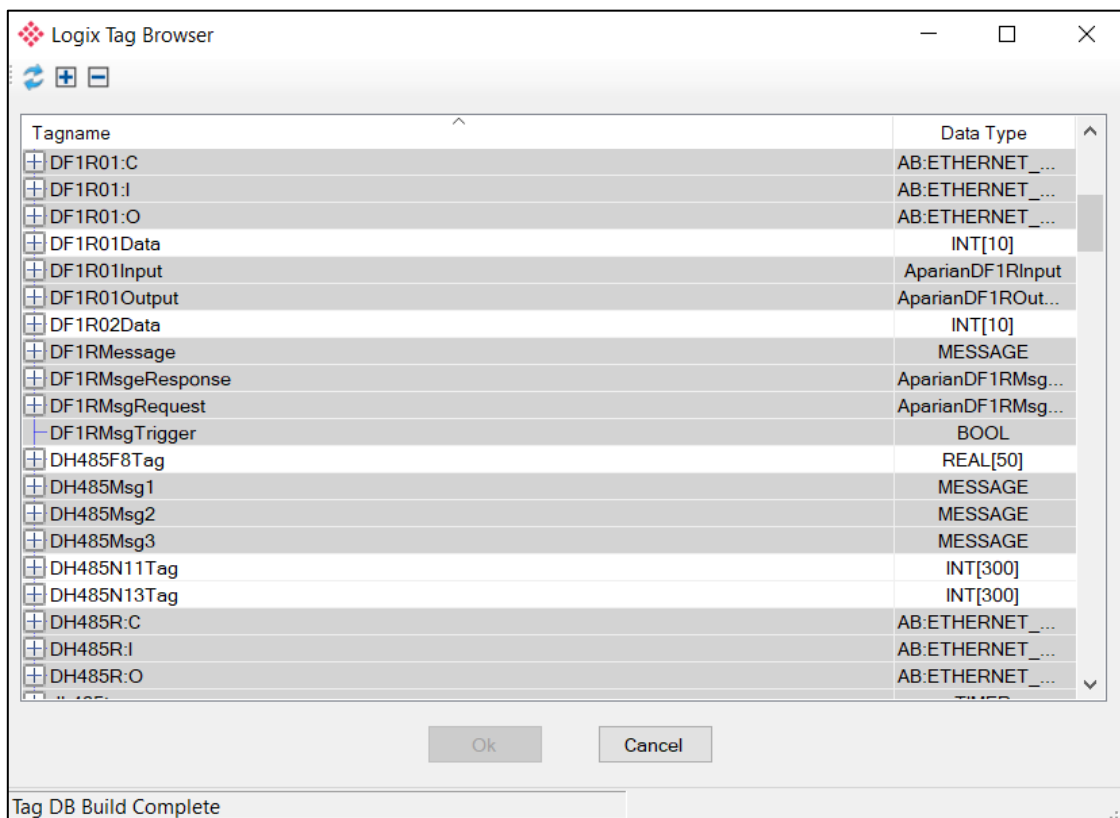


Figure 3.28 - Tag Browser tag selection



NOTE: It is your responsibility to ensure that the Logix tag array datatype and size matches that of the selected DF1 Data Address. Failing to do this can result in communication faults and unexpected results.

3.6. MODULE DOWNLOAD

Once the DF1 configuration has been completed, it must be downloaded to the module.

Before downloading, the Connection Path of the module must be set. This path will automatically default to the IP address of the module, as set in the module configuration. It can be modified if the PLX51-DF1-MSG is not on a local network.

The Connection path can be set by right-clicking on the module and selecting the Connection Path option.

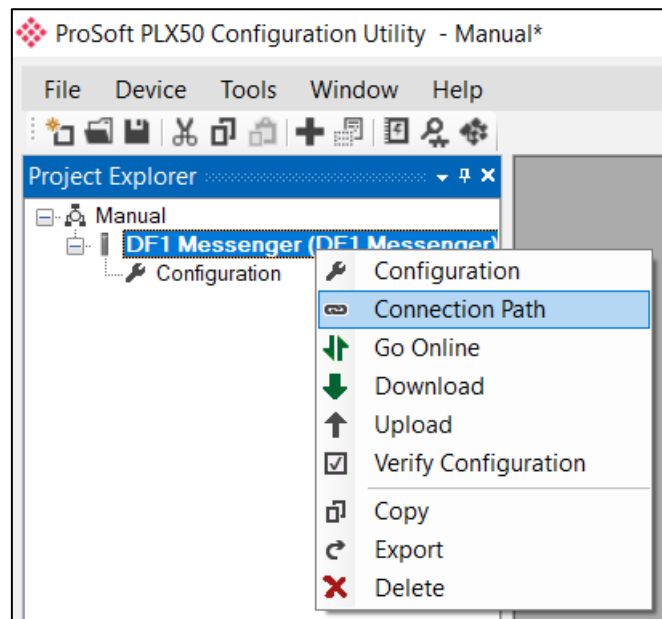


Figure 3.29 - Selecting Connection Path

The new connection path can then be either entered manually or selected by means of the Target Browser.

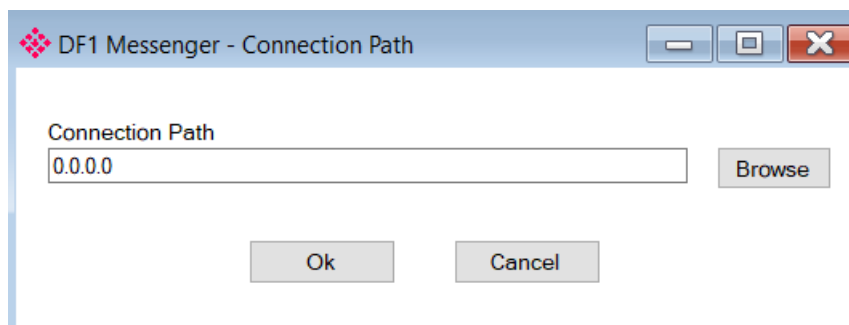


Figure 3.30 - Connection Path

To initiate the download, right-click on the module and select the Download option.

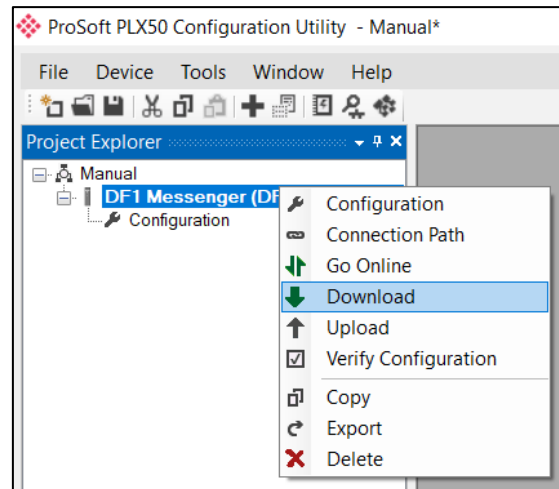


Figure 3.31 - Selecting Download

Once complete, you will be notified that the download was successful.

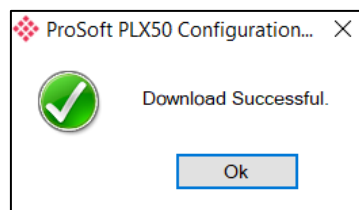


Figure 3.32 - Successful download

During the download process, the module's time will be compared to that of the PC's time. Should the difference be greater than 30 seconds, you will be prompted to set the module time to that of the PC time.

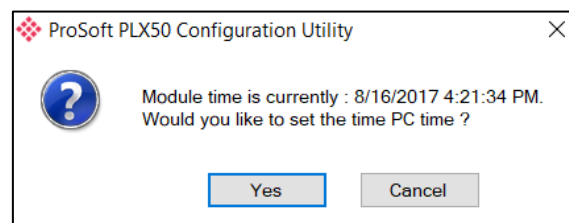


Figure 3.33 - Setting module time

The module time is used only for the event log.

Within the PLX50 Configuration Utility environment, the module will be in the Online state, indicated by the green circle around the module.

The module is now configured and will start operating immediately.

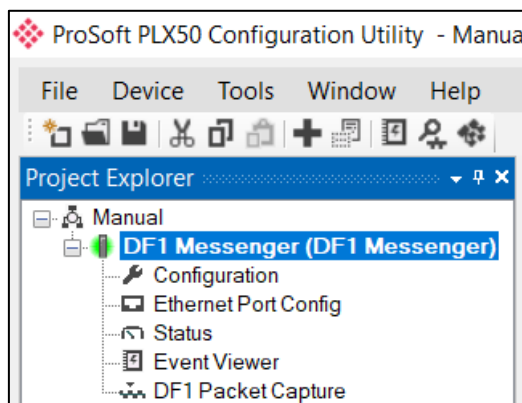


Figure 3.34 - Module online

3.7. RSLOGIX 5000 CONFIGURATION

The PLX51-DF1-MSG modules can be easily integrated with Allen-Bradley Logix family of controllers.

For Logix versions 20 and beyond, the modules can be added using the EDS Add-On-Profile (AOP), which is described in section 3.7.1.

For older versions (19 and below), the module must be added using a Generic Profile which is described in section 3.7.2.

3.7.1. STUDIO 5000 CONFIGURATION (VERSION 20+)

The Logix family in Studio5000 uses the EDS AOP. Before the module can be added to the tree, the module's EDS file must be registered.

Using RSLinx, the EDS file can be uploaded from the device. The EDS Hardware Installation tool is then invoked to complete the registration.

Alternatively, the EDS file can be downloaded from the product web page at www.prosoft-technology.com. It can then be registered manually using the EDS Hardware Installation Tool shortcut, under the Tools menu in Studio 5000.

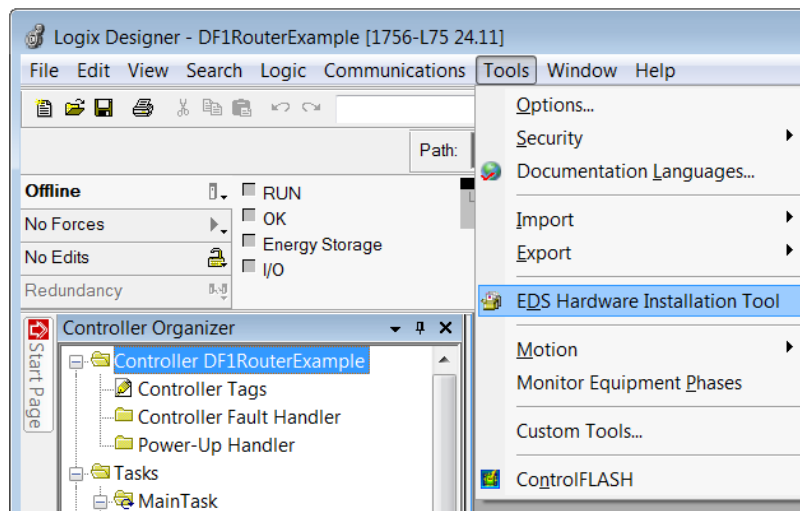


Figure 3.35 - EDS Hardware Installation Utility

After the EDS file has been registered, the module can be added to the Logix IO tree in Studio 5000. Under a Ethernet bridge module in the tree, select the Ethernet network, right-click and select the New Module option.

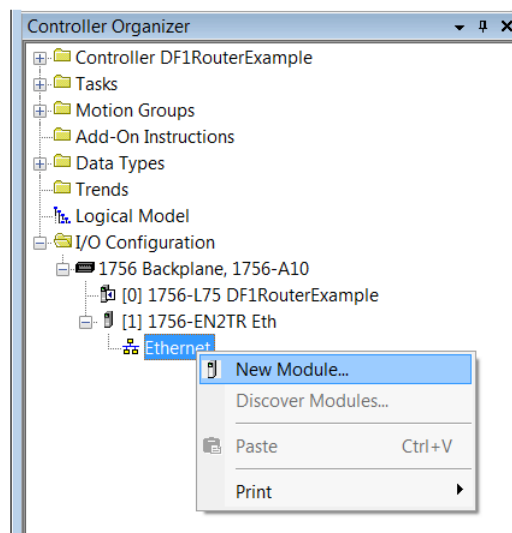


Figure 3.36 – Adding a module

The module selection dialog opens. To quickly find the module, use the Vendor filter to select the ProSoft Technology modules as shown in the figure below.

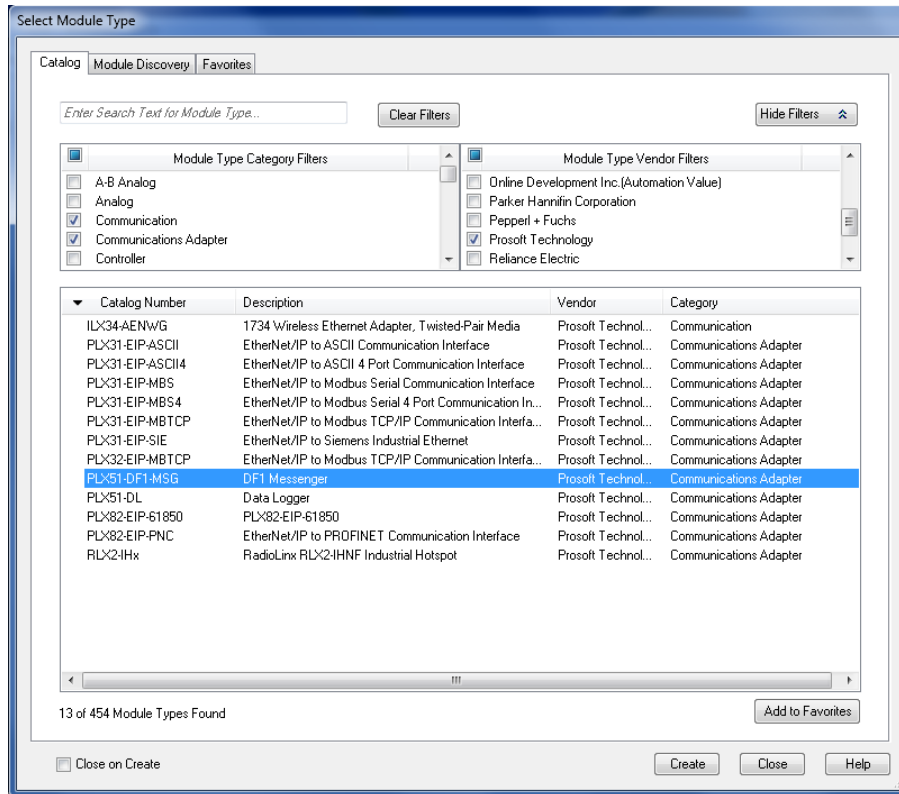


Figure 3.37 – Selecting the module

Locate and select the PLX51-DF1-MSG module, and select the **Create** option. The module configuration dialog opens, where you must specify the Name and IP address as a minimum to complete the instantiation.

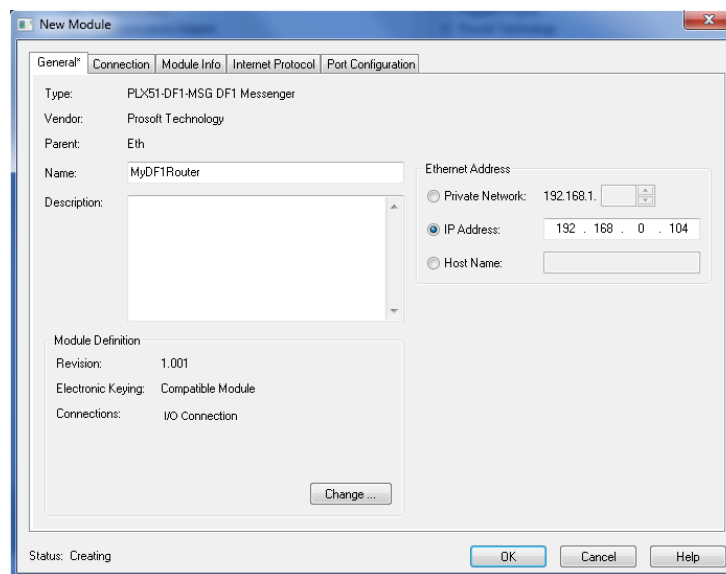


Figure 3.38 – Module instantiation

Once the instantiation is complete, the module appears in the Logix IO tree.

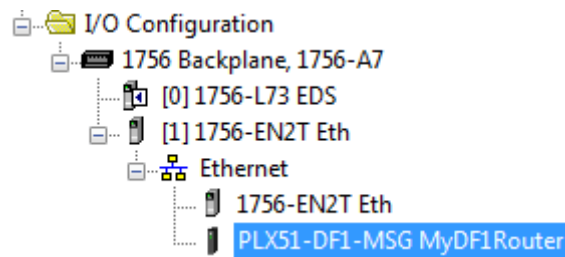


Figure 3.39 – Logix IO tree

The Module Defined Data Types are automatically created during the instantiation process. These data types provide meaningful structures to the module data. An excerpt of the Input Image is shown in the following figure.

Name	Value	Force Mask	Style	Data Type
MyDF1Router.I	(...)	(...)		_0135:PLX51_DF1_MSG_50776D0E:...
MyDF1Router.I.ConnectionFaulted	0		Decimal	BOOL
MyDF1Router.I.InstanceNameLength	0		Decimal	DINT
MyDF1Router.I.Status	2#0000_0000...		Binary	DINT
MyDF1Router.I.Reserved	0		Decimal	BOOL
MyDF1Router.I.DF1SlaveMode	0		Decimal	BOOL
MyDF1Router.I.ScheduledTagMode	0		Decimal	BOOL
MyDF1Router.I.Reserved0	0		Decimal	BOOL
MyDF1Router.I.ConfigurationValid	0		Decimal	BOOL
MyDF1Router.I.RoutingInhibited	0		Decimal	BOOL
MyDF1Router.I.ScheduledTagStatus0	0		Decimal	BOOL
MyDF1Router.I.ScheduledTagStatus1	0		Decimal	BOOL
MyDF1Router.I.ScheduledTagStatus2	0		Decimal	BOOL
MyDF1Router.I.ScheduledTagStatus3	0		Decimal	BOOL
MyDF1Router.I.ScheduledTagStatus4	0		Decimal	BOOL
MyDF1Router.I.ScheduledTagStatus5	0		Decimal	BOOL
...				
MyDF1Router.I.ScheduledTagStatus18	0		Decimal	BOOL
MyDF1Router.I.ScheduledTagStatus19	0		Decimal	BOOL
MyDF1Router.I.TransactionRate	0		Decimal	DINT
MyDF1Router.I.Temperature	0.0		Float	REAL
MyDF1Router.I.DF1RxPacketCount	0		Decimal	DINT
MyDF1Router.I.DF1TxPacketCount	0		Decimal	DINT
MyDF1Router.I.DF1ChecksumErrors	0		Decimal	DINT
MyDF1Router.I.PCCCRRequests	0		Decimal	DINT
MyDF1Router.I.PCCCFailures	0		Decimal	DINT
MyDF1Router.I.TagReads	0		Decimal	DINT
MyDF1Router.I.TagWrites	0		Decimal	DINT
MyDF1Router.I.TagConnectionFailures	0		Decimal	DINT
MyDF1Router.I.TagErrors	0		Decimal	DINT

Figure 3.40 – Module Defined Data Type

3.7.2. RSLogix 5000 CONFIGURATION (PRE-VERSION 20)

3.7.2.1. ADD MODULE TO I/O CONFIGURATION

The module can operate in both a Logix “owned” and standalone mode. When the module operates in “owned” mode, the PLX51-DF1-ENI needs to be added to the RSLogix 5000 IO tree as a generic Ethernet module. This is done by right clicking on the Ethernet Bridge in the RSLogix 5000 and selecting *New Module*. Select the *ETHERNET-MODULE* as shown in the figure below.



NOTE: See the next section for importing the configuration (L5X).

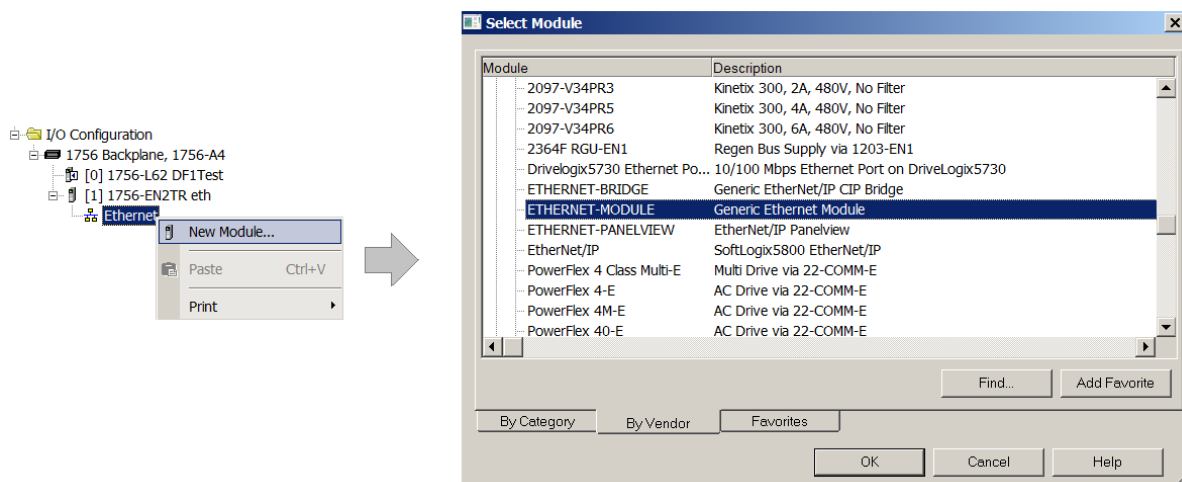


Figure 3.41 - Add a Generic Ethernet Module in RSLogix 5000

In the Module Properties dialog, enter the IP address, the assembly instance, and size for the input, output, and configuration. Below are the required connection parameters.

Connection Parameter	Assembly Instance	Size
Input	100	34 (32-bit)
Output	101	1 (32-bit)
Configuration	102	0 (8-bit)

Table 3.3 - RSLogix class 1 connection parameters for the PLX51-DF1-MSG

Module Properties: Ethernet (ETHERNET-MODULE 1.1)

General | Connection | Module Info

Type: ETHERNET-MODULE Generic Ethernet Module
 Vendor: Allen-Bradley
 Parent: Ethernet
 Name: DF1MSG01
 Description:
 Comm Format: Data - DINT
 Address / Host Name:
☒ IP Address: 192 . 168 . 1 . 41
☐ Host Name:
 Status: Offline

Connection Parameters

	Assembly Instance:	Size:	
Input:	100	34	(32-bit)
Output:	101	1	(32-bit)
Configuration:	102	0	(8-bit)
Status Input:			
Status Output:			

OK Cancel Apply Help

Figure 3.42 - RSLogix General module properties in RSLogix 5000



NOTE: You will need to enter the exact connection parameters before the module will establish a class 1 connection with the Logix controller.

Next, add the connection requested packet interval (RPI). This is the rate at which the input and output assemblies are exchanged. The recommended value is 500ms. Refer to the technical specification section in this document for further details on the limits of the RPI.



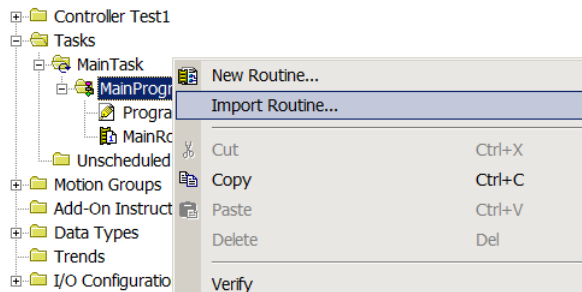
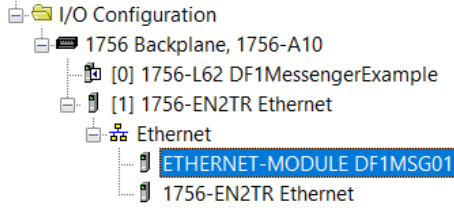
NOTE: Although the module is capable of running with an RPI of 10ms, it is recommended to set the RPI to 500ms to avoid unnecessary loading of the module processor.

General | Connection | Module Info

Requested Packet Interval (RPI): 500.0 ms (1.0 - 3200.0 ms)

☐ Inhibit Module
☐ Major Fault On Controller If Connection Fails While in Run Mode
☒ Use Unicast Connection over EtherNet/IP

Figure 3.43 - Connection module properties in RSLogix 5000



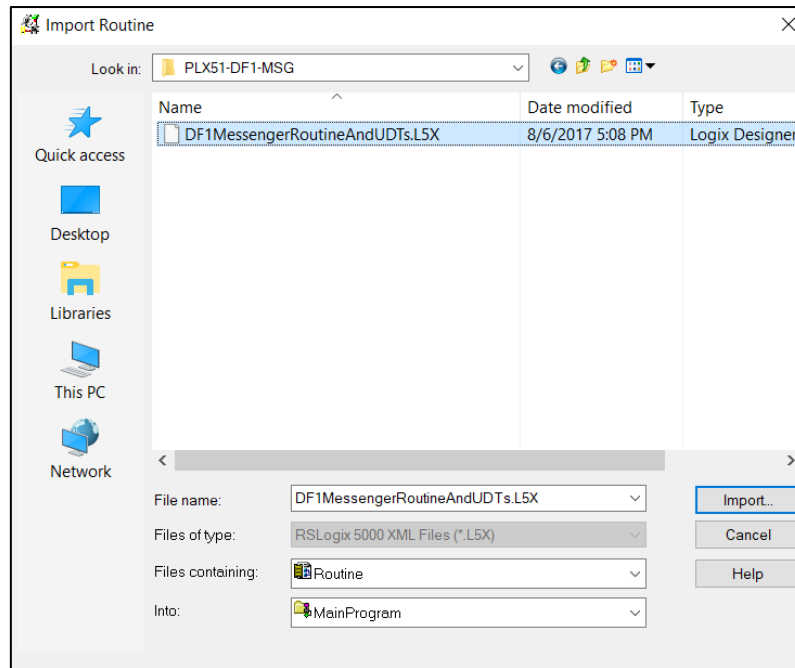


Figure 3.46 - Selecting partial import file

The import creates the following:

- The required UDTs (user defined data types)
- Two controller tags representing the Input and Output assemblies.
- A routine mapping the PLX51-DF1-MSG module to the aforementioned tags.

To change the routine to map to the correct PLX51-DF1-ENI module instance name, make sure that the mapping routine is called by the Program's Main Routine.

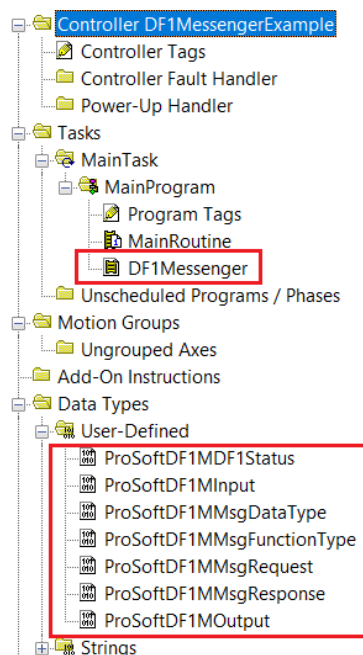


Figure 3.47 - Imported RSLogix 5000 objects

4. OPERATION

4.1. MESSAGE ROUTING

When the PLX51-DF1-MSG has been set up, the DF1 message initiator sends a read/write to a DF1 address, then routed to a Logix tag. There are various indicators to determine if the mapping has routed the DF1 messages correctly. Refer to the diagnostics section for a more detailed explanation.

4.2. RSLOGIX 5000 ASSEMBLIES

When the module operates in a Logix “owned” mode, the Logix controller establishes a class 1 cyclic communication connection with the PLX51-DF1-MSG. A input and output assembly is exchanged at a fixed interval. The UDTs convert the input and output arrays into tag-based assemblies. Refer to the additional information section in this document for the input and output UDTs.

DF1M01Input	{...}	{...}		ProSoftDF1MInput
DF1M01Input.Instance	'South'	{...}		STRING
DF1M01Input.Status	{...}	{...}		ProSoftDF1MDF1Status
DF1M01Input.TransactionRate	31		Decimal	DINT
DF1M01Input.Temperature	46.3		Float	REAL
DF1M01Input.DF1RxPacketCount	34218		Decimal	DINT
DF1M01Input.DF1TxPacketCount	34217		Decimal	DINT
DF1M01Input.DF1ChecksumErrors	0		Decimal	DINT
DF1M01Input.PCCCRequests	0		Decimal	DINT
DF1M01Input.PCCCFailures	0		Decimal	DINT
DF1M01Input.TagReads	16522		Decimal	DINT
DF1M01Input.TagWrites	587		Decimal	DINT
DF1M01Input.TagConnectionFailures	0		Decimal	DINT
DF1M01Input.TagErrors	0		Decimal	DINT

Figure 4.1. – Input assembly UDT structure

4.2.1. INPUT ASSEMBLY

The following parameters are used in the input assembly of the module:

Parameter	Datatype	Description
Instance	STRING	The instance name of the module that was configured under the general DF1 configuration in the PLX50 Configuration Utility.
Status.Reserved	BOOL	Reserved
Status.ReactiveTagMode	BOOL	Set if the module is operating in DF1 Slave mode.
Status.ScheduledTagMode	BOOL	Set if the module is operating in Scheduled Tag mode.
Status.ConfigurationValid	BOOL	Set if a valid configuration is executing in the module.
Status.RoutingInhibited	BOOL	Set when the module's routing function has been inhibited. Routing can be inhibited by setting a bit in the output assembly of the module.
Status.ScheduledTagStatus0...19	BOOL[20]	Each bit represents the status of the last scheduled transaction for that specific map item. A true value indicates success.
TransactionRate	DINT	The transaction rate is the number of DF1 messages per second that the module is currently routing.
DeviceTemperature	REAL	The internal temperature of the module.
DF1RxPacketCount	DINT	The total number of DF1 packets received by the module.
DF1TxPacketCount	DINT	The number of DF1 packets sent by the module.
DF1ChecksumErrors	DINT	The number of corrupted DF1 packets received by the module.
PCCCRequests	DINT	The total number of DF1 message routing requests received by the module when operating in Bridge mode.
PCCCFailures	DINT	The total number of DF1 message routing requests that resulted in errors when operating in Bridge mode.
TagReads	DINT	The total number of tag reads executed by the module when operating in Tag Map mode.
TagWrites	DINT	The total number of tag writes executed by the module when operating in Tag Map mode.
TagConnectionFailures	DINT	The number of failed class 3 connection attempts when operating in Tag Map mode. Tag reading and writing requires the module to first establish a class 3 connection with the Logix Controller.
TagErrors	DINT	The number of failed tag access (read/write) requests when operating in tag Map mode. These may include privileged violations, non-existing tags, etc.

Table 4.1 - RSLogix 5000 input assembly parameters

4.2.2. OUTPUT ASSEMBLY

The following parameters are used in the output assembly of the module.

Parameter	Datatype	Description
RoutingInhibit	BOOL	This bit inhibits the module's routing capabilities. When set, no DF1 messages are routed. This may be required in applications running a redundant DF1 network where one of the PLX51-DF1-MSGs is to run in a hot-standby mode.

Table 4.2 - RSLogix 5000 output assembly parameters

5. DIAGNOSTICS

5.1. LEDS

The PLX51-DF1-MSG provides three LEDs for diagnostic purposes as shown below.



Figure 5.1 - PLX51-DF1-MSG front view

LED	Description
Module	<p>The Module LED provides information regarding the system-level operation of the module. If the LED is red, the module is not operating correctly. For example, if the module application firmware has been corrupted or there is a hardware fault the module will have a red Module LED.</p> <p>If the LED is green, then the module has booted and is running correctly.</p>
Activity	<p>The Activity LED is used for the RS232 serial port. Thus, every time a successful DF1 packet was received, the LED will toggle green. The LED toggles red if a corrupted packet was received (eg. failed checksum).</p>
Ethernet	<p>The Ethernet LED lights up when an Ethernet link has been detected (by plugging in a connected Ethernet cable). The LED flashes every time traffic was detected.</p>

Table 5.1 - Module LED operation

5.2. MODULE STATUS MONITORING

The PLX51-DF1-MSG provides a range of statistics that can assist with module operation, maintenance, and diagnostics. The statistics can be accessed in full by the PLX50 Configuration Utility or using the web server in the module.

To view the module's status in the ProSoft PLX50 Configuration Utility, the module must be online. Right-click on the module and select the *Go Online* option.

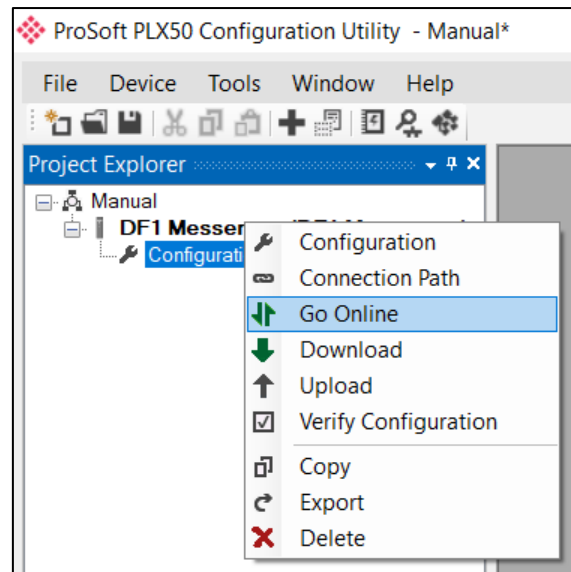


Figure 5.2. - Selecting to Go Online

The Online mode is indicated by the green circle behind the module icon in the Project Explorer tree.

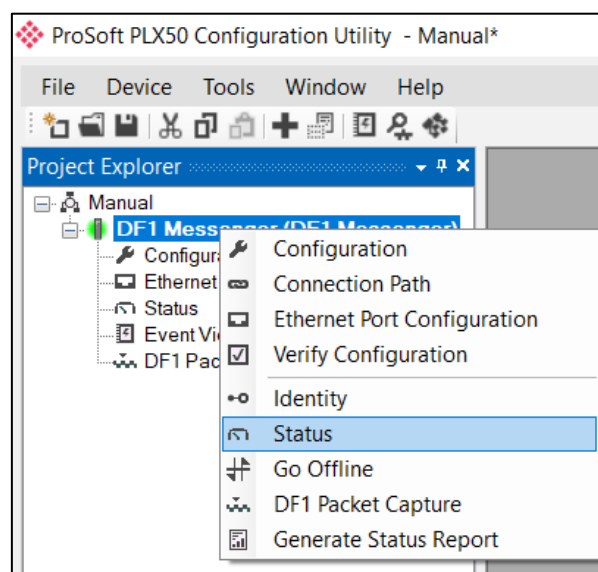


Figure 5.3. - Selecting online Status

The Status monitoring window can be opened by either double-clicking on the *Status* item in the Project Explorer tree, or by right-clicking on the module and selecting *Status*.

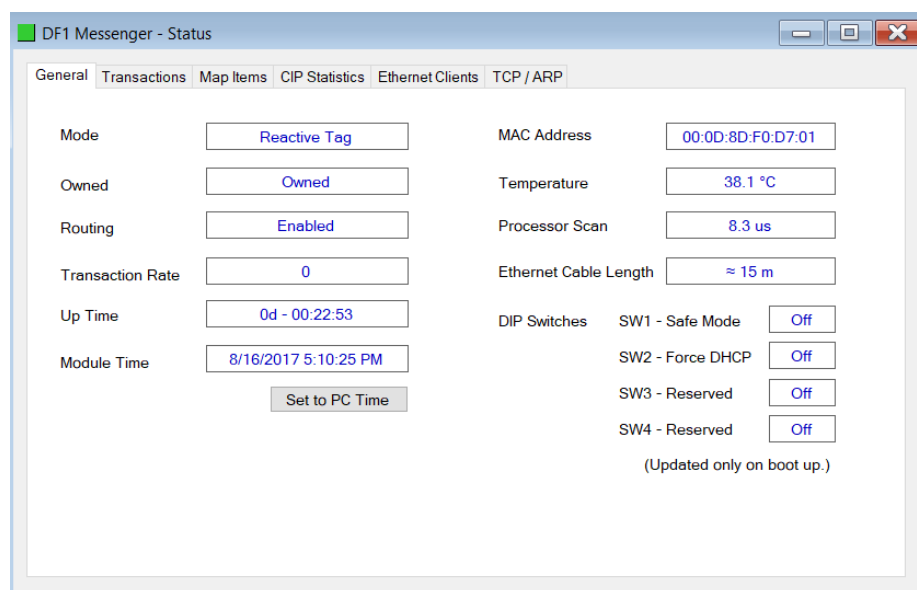


Figure 5.4. - Status monitoring - General

The General tab displays the following general parameters. It can also be used to set the module time to the PC time:

Parameter	Description
Mode	Indicates the current operating mode : DF1 Slave Scheduled Tag
Owned	Indicates whether or not the module is currently owned (Class 1) by a Logix controller.
Routing	Indicates whether the routing of module is enabled or inhibited. The routing operation can be inhibited in the output assembly of the module.
Transaction Rate	The number of DF1 messages per second that the module is currently routing.
Up Time	Indicates the elapsed time since the module was powered-up.
Module Time	Indicates the module's internal time. The module time is stored in UTC (Universal Coordinate Time) but displayed on this page according to the local PC Time Zone settings.
MAC Address	Displays the module's unique Ethernet MAC address.
Temperature	The internal temperature of the module.
Processor Scan	The amount of time (microseconds) taken by the module's processor in the last scan.
DIP Switch Position	The status of the DIP switches when the module booted. Note that this status will not change if the DIP switches are altered when the module is running.

Table 5.2 - Parameters displayed in the Status Monitoring – General Tab

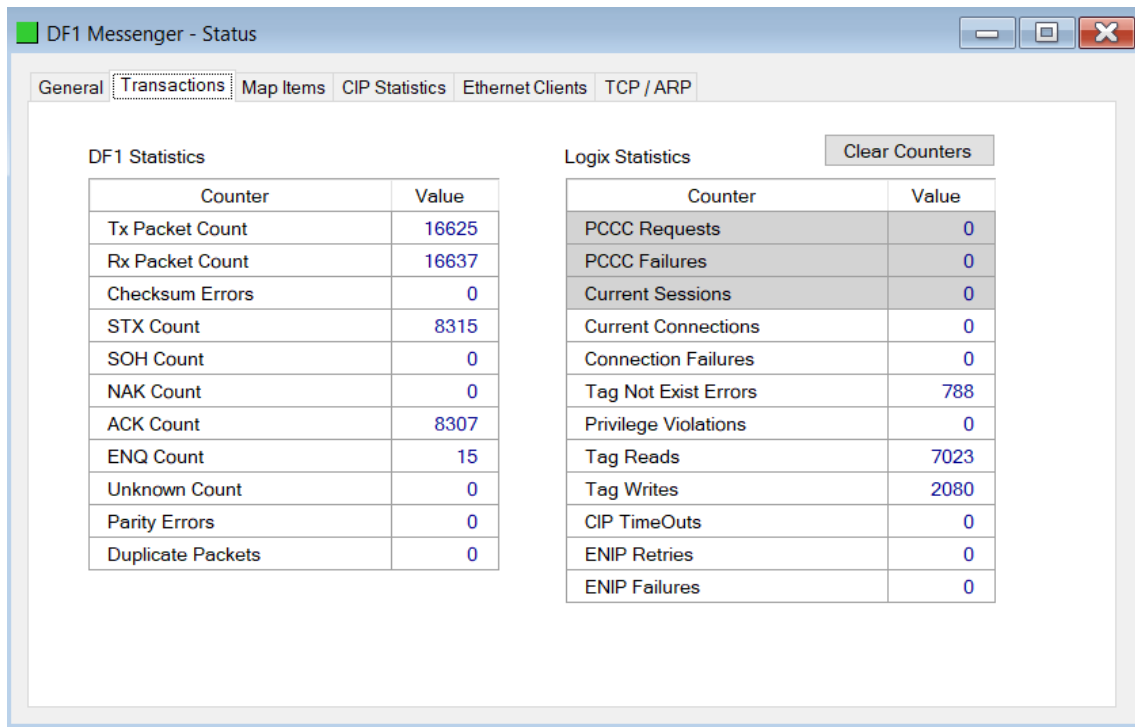


Figure 5.5. - Status monitoring - Transactions

The Transactions tab displays the statistics associated with the following:

- DF1 messages
- Bridge messages (Not relevant for the DF1 Messenger)
- Logix Tag Mapping (DF1 Slave and Scheduled Tag Mode)

Statistic	Description
Tx Packet Count	The number of DF1 packets sent by the module.
Rx Packet Count	The number of DF1 packets received by the module.
Checksum errors	The number of corrupted DF1 packets received by the module.
STX count	The number of DF1 STX (Start of Text) delimiters received by the module.
SOH count	The number of DF1 SOH (Start of Header) delimiters received by the module.
NAK count	The number of NAK (Negative Acknowledge) DF1 packets received by the module.
ACK count	The number of ACK (Acknowledge) DF1 packets received by the module.
ENQ count	The number of ENQ (Enquiry) DF1 packets received by the module.
Unknown count	The number of unknown packets received by the module.
Parity errors	The number of bytes with parity errors received by the module.
Duplicate packet count	The number of duplicate packets received by the module.

Table 5.3 – DF1 statistics

The following PCCC statistics are not relevant for the PLX51-DF1-MSG.

Statistic	Description
PCCC Requests	The number of EtherNet/IP PCCC requests that have been sent to a Logix controller.
PCCC Failures	The number of failed EtherNet/IP PCCC responses that have been received by the PLX51-DF1-MSG from a Logix controller.
Current Sessions	The current number of open EtherNet/IP PCCC sessions.

Table 5.4 - PCCC statistics

The following Tag Mapping statistics are only relevant when the module is running in either DF1 Slave or Scheduled Tag mode.

Statistic	Description
Current Connections	The number of current open class 3 connections.
Connection Failures	The number of failed attempts at establishing a class 3 connection with a Logix controller.
Tag Not Exist Errors	The number of tag read and tag write transactions that failed due to the destination tag not existing.
Privilege Violation Errors	The number of tag read and tag write transactions that failed due to a privilege violation error. This may be caused by the External Access property of the Logix tag being set to either None or Read Only.
Tag Reads	The number of tag read transactions executed by the PLX51-DF1-MSG module.
Tag Writes	The number of tag write transactions executed by the PLX51-DF1-MSG module.
CIP Timeout	This count increases when no response was received for the Tag Read/Write.
ENIP Retries	This count increases when no response was received from the Logix Controller by the time the ENIP timeout is reached.
ENIP Failures	This count increases when the ENIP Retry Limit is reached and no response has been received from the Logix Controller.

Table 5.5 - Tag Mapping statistics

The Map Items tab displays the successful packet counts processed by each mapping item. If an item count changes, the success count field will be displayed with a green background for approximately 3 seconds. This provides quick visual feedback of the currently active items.

The fields in the Map Items tab adjust to suite the appropriate mode.

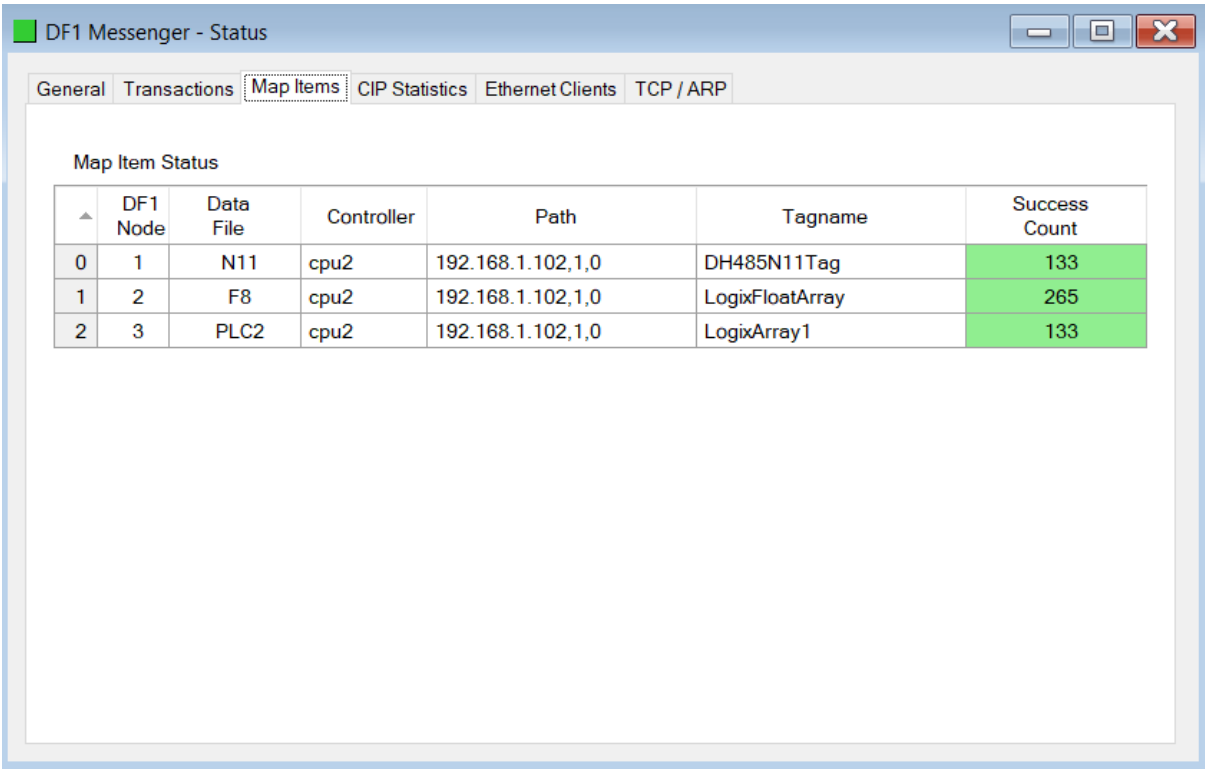


Figure 5.6. - Map Item status

5.3. DF1 PACKET CAPTURE

The module provides the capability to capture the DF1 traffic for analysis.

To invoke the capture of the module, double-click on the DF1 Packet Capture item in the Project Explorer tree.

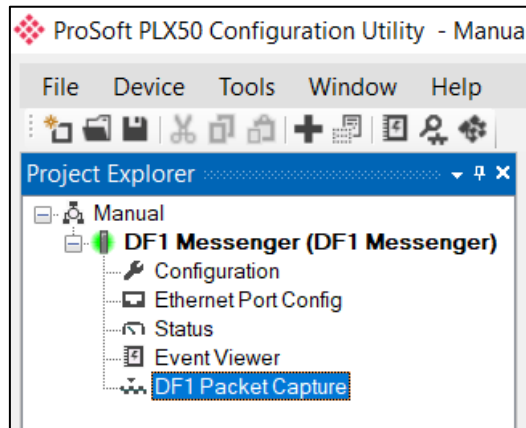


Figure 5.7. - Selecting DF1 Packet Capture

The DF1 Packet Capture window opens and automatically starts capturing all DF1 packets.



NOTE: The module keeps a circular buffer of the last 20 DF1 packets, and thus there may be up to 20 packets in the capture that were received / sent before the capture was initiated.

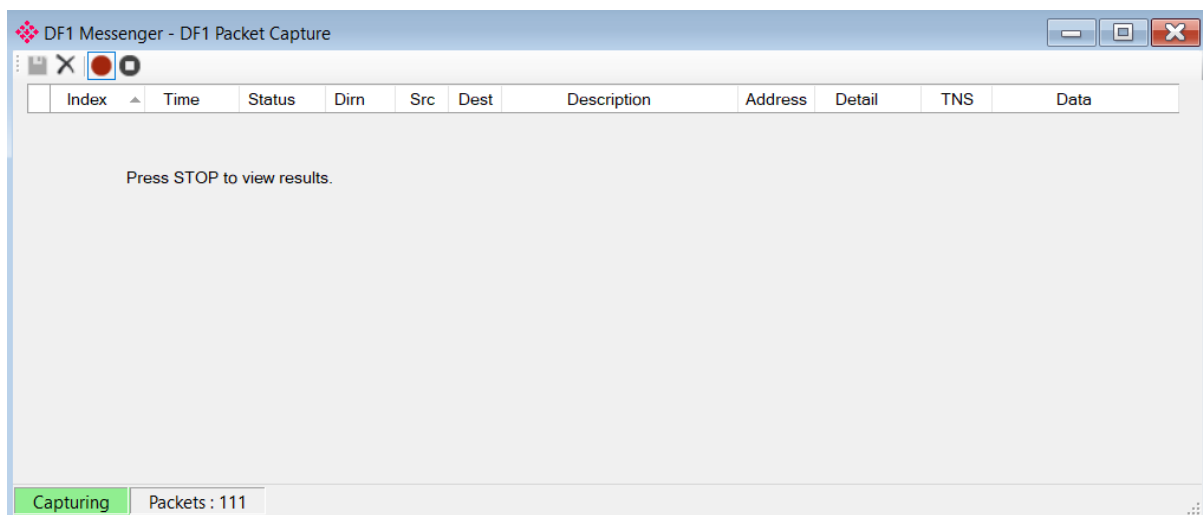


Figure 5.8 - DF1 packet capture

To display the captured DF1 packets, the capture process must first be stopped by pressing the Stop button.

Index	Time	Status	Dirn	Src	Dest	Description	Address	Detail	TNS	Data
39686	0d - 00:31:57.750	Ok	Rx	40	2	TypedRead	0:8:40	Offset=0 T...	7C21	10 02 0...
39687	0d - 00:31:57.750	Ok	Tx			ACK				10 06
39688	0d - 00:31:57.760	Ok	Tx	2	40	Reply		Success	7C21	10 02 2...
39689	0d - 00:31:57.830	Ok	Rx			ACK				10 06
39690	0d - 00:31:57.870	Ok	Rx	40	3	UnprotectedRead	16	Size=100	7C44	10 02 0...
39691	0d - 00:31:57.870	Ok	Tx			ACK				10 06
39692	0d - 00:31:57.870	Ok	Tx	3	40	ReplyUnprotectedRead		Success	7C44	10 02 2...
39693	0d - 00:31:57.880	Ok	Rx			ACK				10 06
39694	0d - 00:31:57.980	Ok	Rx	40	1	TypedWrite	0:11:0	Offset=0 T...	7C62	10 02 0...
39695	0d - 00:31:57.980	Ok	Tx			ACK				10 06
39696	0d - 00:31:57.980	Ok	Rx			ACK				10 06
39697	0d - 00:31:57.980	Ok	Tx	1	40	Reply		Success	7C62	10 02 2...
39698	0d - 00:31:58.000	Ok	Rx	40	2	TypedRead	0:8:40	Offset=0 T...	7C83	10 02 0...

Stopped Packets : 195

Figure 5.9. - DF1 Packet Capture complete

The captured DF1 packets are tabulated as follows :

Statistic	Description
Index	The packet index, incremented for each packet sent or received.
Time	The elapsed time since the module powered up.
Status	The status of the packet. Received packets are checked for valid DF1 constructs and valid checksums.
Dirn	The direction of the packet, either transmitted (Tx) or received (Rx).
Src	DF1 node address of the message source.
Dest	DF1 node address of the message destination.
Description	Brief description of the packet, usually the command.
Address	The string representing a PLC data address, where applicable.
Detail	Additional details associated with command.
TNS	Transaction number. Used to match request and reply messages.
Data	The packet's raw data displayed in space delimited hex.

Table 5.6. - DF1 Packet Capture fields

The packet capture can be saved to a file for further analysis by selecting the Save button on the toolbar. Previously saved DF1 Packet Capture files can be viewed by selecting the DF1 Packet Capture Viewer option in the tools menu.

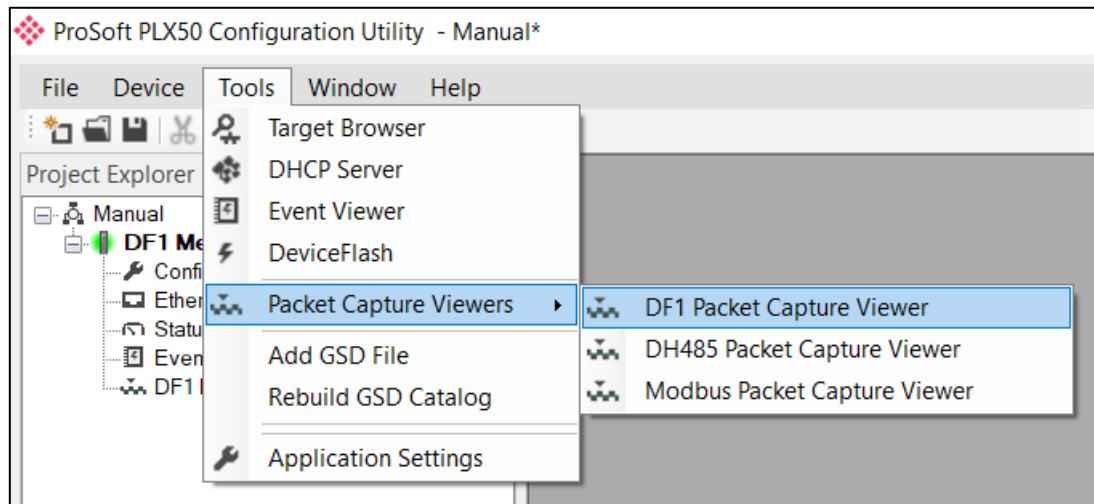


Figure 5.10. - Selecting the DF1 Packet Capture Viewer

5.4. MODULE EVENT LOG

The PLX51-DF1-MSG module logs various diagnostic records to an internal event log. These logs are stored in non-volatile memory and can be displayed using the PLX50 Configuration Utility or via the web interface. To view them in the PLX50 Configuration Utility, select the Event Viewer option in the Project Explorer tree.

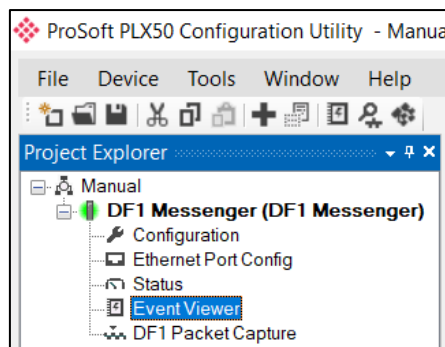


Figure 5.11. - Selecting the module Event Log

The Event Log window opens and automatically reads all the events from the module. The log entries are sorted to have the latest record at the top. Custom sorting is achieved by double-clicking on the column headings.

Index	Time	Up Time	Event
759	2017/08/16 15:17:48	0d - 00:29:28	No tag map config for node 3
758	2017/08/16 15:17:48	0d - 00:29:28	No tag map config for node 2
757	2017/08/16 15:17:48	0d - 00:29:28	DF1 Router config valid
756	2017/08/16 15:14:32	0d - 00:26:34	DF1 Router config valid
755	2017/08/16 15:10:20	0d - 00:22:49	DF1 Router config valid
754	2017/08/16 14:58:21	0d - 00:12:08	USART0: End of packet buffer reached
753	2017/08/16 14:56:32	0d - 00:10:31	DF1 Router config valid
752	2017/08/16 14:45:11	0d - 00:00:24	Parameters updated
751	2017/08/16 14:45:11	0d - 00:00:23	Parameters updated
750	2017/08/16 14:45:04	0d - 00:00:17	Parameters updated
749	2017/08/16 14:45:03	0d - 00:00:17	Parameters updated
748	2017/08/16 14:44:47	0d - 00:00:02	Ethernet link up
747	2017/08/16 14:44:46	0d - 00:00:02	Application code running
746	2010/01/01 00:00:02	0d - 00:00:00	DF1 Router config valid
745	2017/08/16 14:44:45	0d - 00:02:27	Module power down
744	2017/08/16 14:42:55	0d - 00:00:50	DB Counts - 0 0 15
743	2017/08/16 14:42:02	0d - 00:00:02	Ethernet link up
742	2017/08/16 14:42:02	0d - 00:00:02	Application code running

Figure 5.12. – Module Event Log

The log can also be stored to a file for future analysis, by selecting the Save button in the tool menu.

To view previously saved files, use the Event Log Viewer option under the tools menu.

5.5. WEB SERVER

The PLX51-DF1-MSG provides a web server allowing a user without the PLX50 Configuration Utility or RSLogix 5000 to view various diagnostics of the module. This includes Ethernet parameters, system event log, advanced diagnostics, and application diagnostics (DF1 diagnostics).



NOTE: The web server is read-only and thus no parameters or configuration can be altered from the web interface.

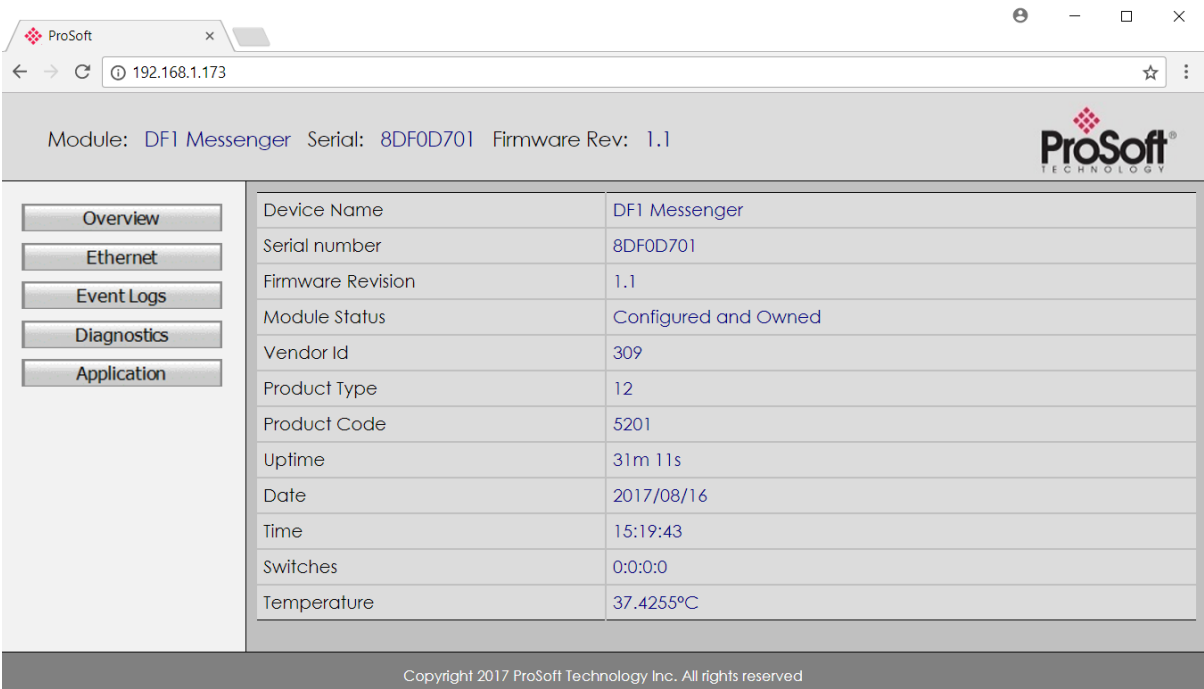


Figure 5.13. - Web interface

6. TECHNICAL SPECIFICATIONS

6.1. DIMENSIONS

Below are the enclosure dimensions as well as the required DIN rail dimensions. All dimensions are in millimetres.

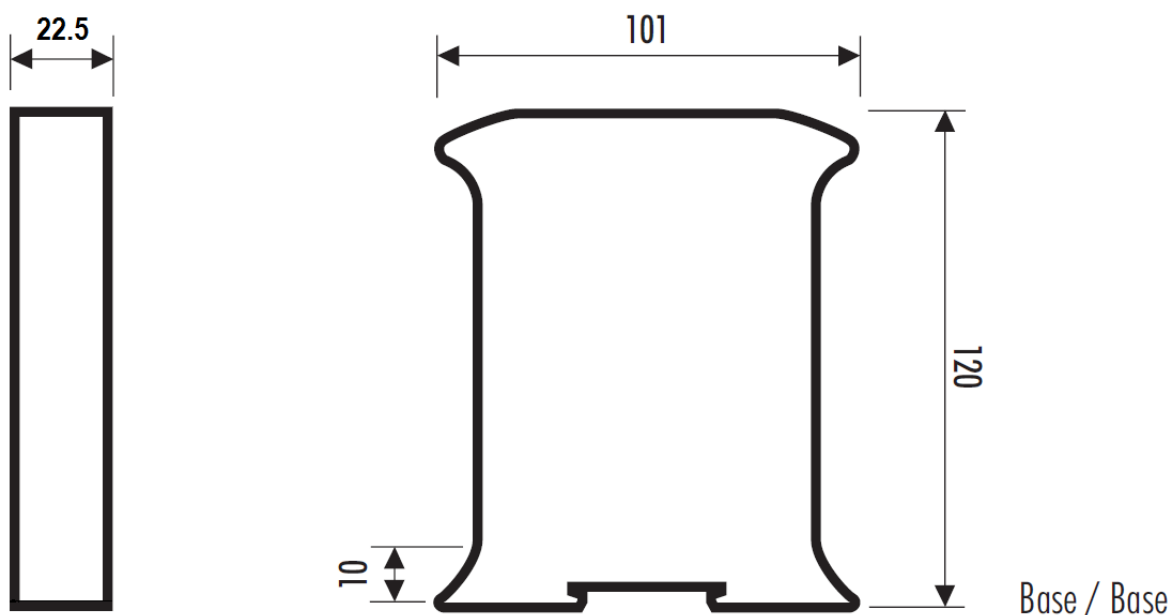


Figure 6.1 - PLX51-DF1-MSG enclosure dimensions

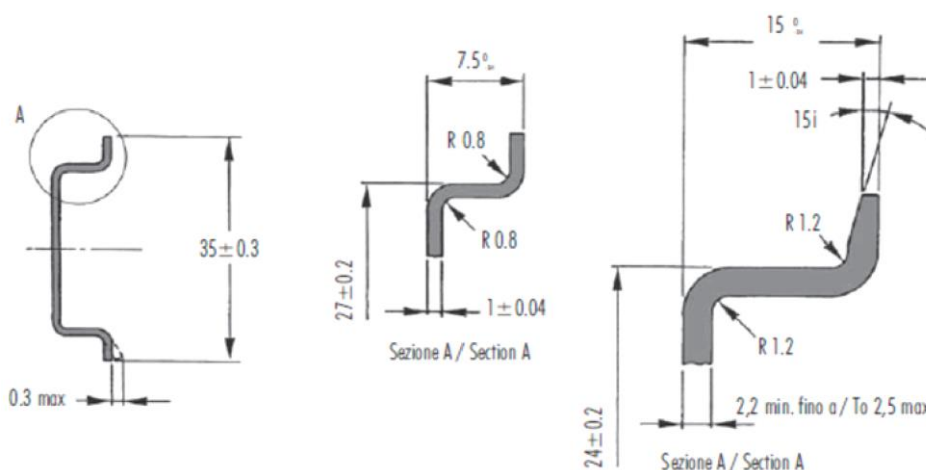


Figure 6.2 - Required DIN dimensions

6.2. ELECTRICAL

Specification	Rating
Power requirements	Input: 10 to 28V DC, (70 mA @ 24 VDC / 130 mA @ 10 VDC)
Power consumption	1.7 W
Connector	3-way terminal
Conductors	24 to 18 AWG
Enclosure rating	IP20, NEMA/UL Open Type
Temperature	-20°C to 70°C
Earth connection	Yes, terminal based
Emissions	IEC61000-6-4
ESD Immunity	EN 61000-4-2
Radiated RF Immunity	IEC 61000-4-3
EFT/B Immunity	EFT: IEC 61000-4-4
Surge Immunity	Surge: IEC 61000-4-5
Conducted RF Immunity	IEC 61000-4-6

Table 6.1 - Electrical specification

6.3. ETHERNET

Specification	Rating
Connector	RJ45
Conductors	CAT5 STP/UTP
ARP connections	Max 20
TCP connections	Max 20
CIP connections	Max 10
Communication rate	10/100Mbps
Duplex mode	Full/Half
Auto-MDIX support	Yes

Table 6.2 - Ethernet specification

6.4. DF1

Specification	Rating
Connector	4-way terminal
Conductor	24 to 18 AWG
Isolation voltage	2.5 kV
Protocol	DF1 Full Duplex, DF1 Half Duplex, DF1 Radio Modem
BAUD	1200, 2400, 4800, 9600, 19200, 38400, 57600, 115200
Parity	None, Even, Odd
Data bits	8
Stop bits	1
Error detection	CRC, BCC
Embedded response	Auto, On
DF1 Slave mode	Max 20 mapping items
Scheduled Tag mode	Max 20 mapping items
DF1 Slave Mode Message Support	PLC-5 Typed Read, PLC-5 Typed Write, SLC Typed Read, SLC Typed Write, PLC-2 Unprotected Read, PLC-2 Unprotected Write, PLC-2 Unprotected Bit Write
Scheduled Tag Mode Message Support	PLC-5 Typed Read, PLC-5 Typed Write, SLC Typed Read, SLC Typed Write

Table 6.3 - DF1 specification

6.5. CERTIFICATIONS

Certification
ATEX: Zone 2 Cat 3
CB Safety
CE
UL/cUL Class 1 Div 2

Table 6.4 – Certifications

THIS EQUIPMENT IS AN OPEN-TYPE DEVICE AND IS MEANT TO BE INSTALLED IN AN ENCLOSURE SUITABLE FOR THE ENVIRONMENT SUCH THAT THE EQUIPMENT IS ONLY ACCESSIBLE WITH THE USE OF A TOOL.

SUITABLE FOR USE IN CLASS I, DIVISION 2, GROUPS A, B, C AND D HAZARDOUS LOCATIONS, OR NONHAZARDOUS LOCATIONS ONLY.

7. SUPPORT, SERVICE & WARRANTY

7.1. CONTACTING TECHNICAL SUPPORT

ProSoft Technology, Inc. is committed to providing the most efficient and effective support possible. Before calling, please gather the following information to assist in expediting this process:

- 1 Product Version Number
- 2 System architecture
- 3 Network details

If the issue is hardware related, we will also need information regarding:

- 1 Module configuration and associated ladder files, if any.
- 2 Module operation and any unusual behavior
- 3 Configuration/Debug status information
- 4 LED patterns
- 5 Details about the serial, Ethernet or Fieldbus devices interfaced to the module, if any.

Note: For technical support calls within the United States, ProSoft's 24/7 after-hours phone support is available for urgent plant-down issues. Detailed contact information for all our worldwide locations is available on the following page.

Asia Pacific	Europe / Middle East / Africa
<p>Regional Office Phone: +603.7724.2080 asiapc@prosoft-technology.com Languages spoken: Bahasa, Chinese, English, Japanese, Korean REGIONAL TECH SUPPORT support.ap@prosoft-technology.com</p> <p>North Asia (China, Hong Kong) Phone: +86.21.5187.7337 china@prosoft-technology.com Languages spoken: Chinese, English REGIONAL TECH SUPPORT support.ap@prosoft-technology.com</p> <p>Southwest Asia (India, Pakistan) Phone: +91.98.1063.7873 india@prosoft-technology.com Languages spoken: English, Hindi, Urdu</p> <p>Australasia (Australia, New Zealand) Phone: +603.7724.2080 pacific@prosoft-technology.com Language spoken: English</p> <p>Southeast Asia (Singapore, Indonesia, Philippines) Phone: +603.7724.2080 seasia@prosoft-technology.com Languages spoken: English, Bahasa, Tamil</p> <p>Northeast & Southeast Asia (Japan, Taiwan, Thailand, Vietnam, Malaysia) Phone: +603.7724.2080 neasia@prosoft-technology.com Languages spoken: English, Chinese, Japanese</p> <p>Korea Phone: +603.7724.2080 korea@prosoft-technology.com Languages spoken: English, Korean</p>	<p>Regional Office Phone: +33.(0)5.34.36.87.20 europe@prosoft-technology.com Languages spoken: French, English REGIONAL TECH SUPPORT support.emea@prosoft-technology.com</p> <p>Middle East & Africa Phone: +971.4.214.6911 mea@prosoft-technology.com Languages spoken: Hindi, English REGIONAL TECH SUPPORT support.emea@prosoft-technology.com</p> <p>North Western Europe (UK, IE, IS, DK, NO, SE) Phone: +44.(0)7415.864.902 nweurope@prosoft-technology.com Language spoken: English</p> <p>Central & Eastern Europe, Finland Phone: +48.22.250.2546 centraleurope@prosoft-technology.com Languages spoken: Polish, English, Russian & CIS Phone: +7.499.704.53.46 russia@prosoft-technology.com Languages spoken: Russian, English</p> <p>Austria, Germany, Switzerland Phone: +33.(0)5.34.36.87.20 germany@prosoft-technology.com Language spoken: English, German</p> <p>BeNeLux, France, North Africa Phone: +33(0)5.34.36.87.27 france@prosoft-technology.com Languages spoken: French, English</p> <p>Mediterranean Countries Phone: +39.342.8651.595 italy@prosoft-technology.com Languages spoken: Italian, English, Spanish</p>

Latin America	North America
<p>Regional Office Phone: +52.222.264.1814 support.la@prosoft-technology.com Languages spoken: Spanish, English REGIONAL TECH SUPPORT support.la@prosoft-technology.com</p> <p>Brazil Phone: +55.11.5084.5178 brasil@prosoft-technology.com Languages spoken: Portuguese, English REGIONAL TECH SUPPORT support.la@prosoft-technology.com</p> <p>Mexico Phone: +52.222.264.1814 mexico@prosoft-technology.com Languages spoken: Spanish, English REGIONAL TECH SUPPORT support.la@prosoft-technology.com</p> <p>Andean Countries, Central America & Caribbean Phone: +507.6427.48.38 andean@prosoft-technology.com Languages spoken: Spanish, English</p> <p>Southern Cone (Argentina, Bolivia, Chile, Paraguay & Uruguay) Phone: +54.911.4565.8119 scone@prosoft-technology.com Languages spoken: Spanish, English</p>	<p>Regional Office Phone: +1.661.716.5100 info@prosoft-technology.com Languages spoken: English, Spanish REGIONAL TECH SUPPORT support@prosoft-technology.com</p>

7.2. WARRANTY INFORMATION

For complete details regarding ProSoft Technology's TERMS & CONDITIONS OF SALE, WARRANTY, SUPPORT, SERVICE AND RETURN MATERIAL AUTHORIZATION INSTRUCTIONS, please see the documents at: www.prosoft-technology.com/legal

Documentation is subject to change without notice.

8. INDEX

A

assembly instance, 41

C

checksum, 24, 49
CompactLogix, 9
ControlLogix, 7

D

DC power, 11
DF1 general configuration, 23
DF1 Messenger, 5, 6, 21, 22, 26, 41, 45, 49, 50, 53, 59, 61
DF1 parameters, 22
DF1 Router, 41
DHCP, 12, 15
dimensions, 61, 67
DIN rail, 13, 61
DIP, 12

E

Ethernet Bridge, 41
Ethernet connector, 14
EtherNet/IP, 5, 9

F

File Number, 26, 28, 30, 31, 33, 34
firmware upgrade, 22

G

ground (GND), 11

I

input assembly, 46, 51

input voltage, 14

L

LED, 49
Logix tag, 22, 26, 28, 30, 31, 33, 34, 45, 46
Logix Tag Map, 26, 30

O

output assembly, 45, 46, 47, 51

P

PLC5, 5
PLX50 Configuration Utility, 21, 22, 29, 34, 46

R

receive (RX), 11, 14
requested packet interval (RPI), 42
RS232, 6, 11, 12, 14, 24, 49
RSLinx, 19
RSLogix 5000, 37, 41, 43, 45, 46, 47, 59

S

Safe Mode, 12
SLC, 5, 9
statistics, 50, 53

T

transmit (TX), 11, 14

U

User Defined Types (UDTs), 43

W

web server, 50, 59