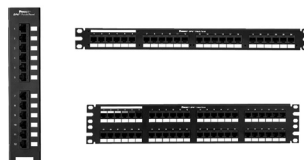


# NetKey® Category 6 Punchdown Patch Panels

## specifications

Category 6/Class E punchdown patch panels shall terminate unshielded twisted 4-pair, 22 – 26 AWG, 100 ohm cable and mount to standard EIA 19 inches or 23 inches racks. Punchdown tool shall properly terminate each conductor for optimum performance. Universal T568A and T568B color-coded wiring schemes included.



## technical information

<b>Category 6/Class E performance:</b>	Exceeds ANSI/TIA-568.2-D Category 6 and ISO 11801 Class E channel requirements at swept frequencies up to 250 MHz Meets ANSI/TIA-568.2-D Category 6 and ISO 11801 Class E component requirements at swept frequencies up to 250 MHz
<b>FCC and ANSI compliance:</b>	Meets ANSI/TIA-1096-A; contacts plated with 50 microinches of gold for superior performance
<b>IEC compliance:</b>	Meets IEC 60603-7 and IEC 60512-99-002
<b>PoE and PoH compliance:</b>	Meets IEEE 802.3af/802.3at and 802.3bt type 3 and type 4. Supports Power over HDBaseT up to 100 watts
<b>c(UL)us Listed:</b>	UL 1863 (Use as communications circuit accessory); CSA standard C22.2
<b>RoHS compliance:</b>	Compliant
<b>Mounting options:</b>	Mounts to standard EIA 19" or 23" racks (23" requires use of extender brackets: PEB1 or PEB2) 12-port suitable for wall mount with WB89D bracket

## key features and benefits

<b>100% performance tested</b>	Confidence that each port delivers specified performance
<b>110 style punchdown termination</b>	Utilizes industry standard termination style and includes wire retention cap
<b>Identification</b>	Write-on areas allow for port and panel identification
<b>Industry standard RJ45 interface</b>	Familiar to end-users; backwards compatible with Category 5e

## applications

Applications include:

- Ethernet 10BASE-T, 100BASE-T (Fast Ethernet), and 1000BASE-T (Gigabit Ethernet)
- Voice over Internet Protocol (VoIP)

### NetKey Category 6 Flat Punchdown Patch Panels

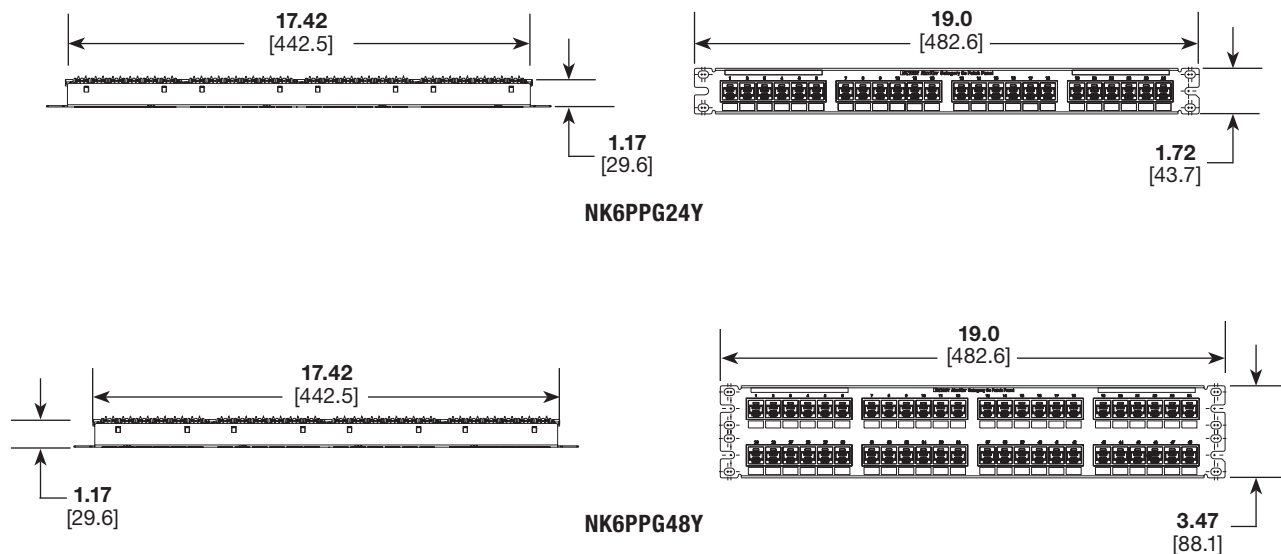
<b>12-port:</b>	<b>NK6PPG12WY</b>
<b>24-port, 1 RU:</b>	<b>NK6PPG24Y</b>
<b>48-port, 2 RU:</b>	<b>NK6PPG48Y</b>

### Termination Tools

<b>Punchdown tool:</b>	<b>PDT110‡</b>
<b>Snipping tool:</b>	<b>CWST</b>
<b>Stripping tool:</b>	<b>CJAST</b>
<b>Replacement retention cap:</b>	<b>DRWCIW-24</b>

‡Terminates the NetKey Keystone Punchdown Jack Module and NetKey Punchdown Patch Panels.

# NetKey® Category 6 Punchdown Patch Panels



Dimensions are in inches. [Dimensions in brackets are metric].

## WORLDWIDE SUBSIDIARIES AND SALES OFFICES

PANDUIT US/CANADA  
Phone: 800.777.3300

PANDUIT EUROPE LTD.  
London, UK  
Phone: 44.20.8601.7200

PANDUIT SINGAPORE PTE. LTD.  
Republic of Singapore  
Phone: 65.6305.7575

PANDUIT JAPAN  
Tokyo, Japan  
Phone: 81.3.6863.6000

PANDUIT LATIN AMERICA  
Guadalajara, Mexico  
Phone: 52.33.3777.6000

PANDUIT AUSTRALIA PTY. LTD.  
Victoria, Australia  
Phone: 61.3.9794.9020

For a copy of Panduit product warranties, log on to [www.panduit.com/warranty](http://www.panduit.com/warranty)

**PANDUIT®**

For more information  
Visit us at [www.panduit.com](http://www.panduit.com)  
Contact Customer Service by email: [cs@panduit.com](mailto:cs@panduit.com)  
or by phone: 800.777.3300

© 2023 Panduit Corp.  
ALL RIGHTS RESERVED.  
CODS1-WW-ENG  
Replaces NKDS43-WW-ENG  
3/2023