

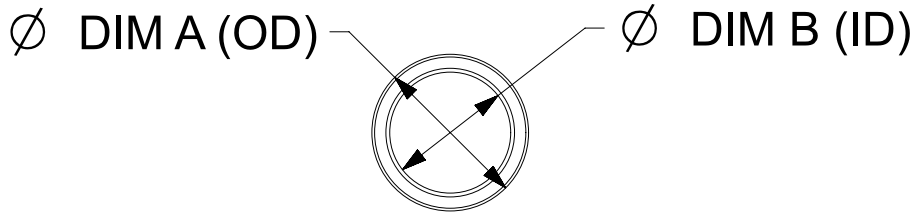
THIS COPY IS PROVIDED ON A RESTRICTED BASIS AND IS NOT TO BE USED IN ANY WAY DETRIMENTAL TO THE INTERESTS OF PANDUIT CORP.

Material: Nylon 6

SLIT PART NUMBERS	NON-SLIT PART NUMBERS	DIM A Target (OD)	DIM B Target (ID)	Wall Thickness	FLAMMABILITY
CLT25N-*	CLTS25N-*	0.378 [9.60]	0.281 [7.14]	.007-.023 [0.18-0.51]	A UL94-HB
CLT35N-*	CLTS35N-*	0.417 [10.59]	0.323 [8.20]		
CLT38N-*	CLTS38N-*	0.535 [13.59]	0.421 [10.69]		
CLT50N-*	CLTS50N-*	0.675 [17.15]	0.518 [13.16]		
CLT62N-*	CLTS62N-*	0.815 [20.70]	0.665 [16.89]		
CLT75N-*	CLTS75N-*	0.933 [23.70]	0.762 [19.35]		
CLT100N-*	CLTS100N-*	1.114 [28.30]	0.917 [23.29]	.008-.031 [0.20-0.79]	
CLT125N-*	CLTS125N-*	1.524 [38.71]	1.303 [33.10]		
CLT150N-*	CLTS150N-*	1.728 [43.89]	1.484 [37.69]		
CLT188N-*	NA	2.157 [54.79]	1.870 [47.50]		

Material: Polyethylene

SLIT PART NUMBERS	NON-SLIT PART NUMBERS	DIM A Target (OD)	DIM B Target (ID)	Wall Thickness	FLAMMABILITY
CLT25F-*	CLTS25F-*	0.378 [9.60]	0.281 [7.14]	.007-.023 [0.18-0.51]	A UL94-HB
CLT35F-*	CLTS35F-*	0.417 [10.59]	0.323 [8.20]		
CLT35F-C3	CLTS35F-C3	0.496 [12.60]	0.344 [8.73]		
CLT38F-*	CLTS38F-*	0.535 [13.59]	0.421 [10.69]		
CLT50F-*	CLTS50F-*	0.675 [17.15]	0.518 [13.16]		
CLT62F-*	CLTS62F-*	0.815 [20.70]	0.665 [16.89]		
CLT75F-*	CLTS75F-*	0.933 [23.70]	0.762 [19.35]	.008-.031 [0.20-0.79]	
CLT100F-*	CLTS100F-*	1.114 [28.30]	0.917 [23.29]		
CLT125F-*	CLTS125F-*	1.524 [38.71]	1.303 [33.10]		
CLT150F-*	CLTS150F-*	1.728 [43.89]	1.484 [37.69]		
CLT188F-*	NA	2.157 [54.79]	1.870 [47.50]		



- * NOTES:
- SEE www.panduit.com FOR PART NUMBER SUFFIX DESIGNATION FOR PACKAGE SIZE, PART MATERIAL AND PART COLOR.
 - FOR ROLL SIZES LARGER THAN 10 FEET, SPLICES MAY OCCUR.
 - SLIT PART NUMBERS HAVE ONE CONTINUOUS SLIT ALONG ENTIRE LENGTH TUBING.

REV	DATE	BY	CHK	APR	DESCRIPTION	ECN
13A	1/4/2024	JEFP	DAPE	MSAD	A. ADDED TABLE COLUMNS REFERENCING THE FLAMMABILITY RATING OF THE CLT PRODUCTS	GAECN07013
12B	8/15/2023	RVU	DPG	MSAD	B. CHANGED FROM 1.580 [40.00] TO 1.484 [37.69]. A. CHANGED FROM 1.850 [47.00] TO 1.728 [43.89].	GAECN06860
12A	1/17/2023	RVU	DAPE	MSAD	ADDED CLT35F-C3 AND CLTS35F-C30, DIM A-0.496 [12.60], DIM B-0.344 [8.73] TO TABLE, Material (Polyethylene).	GAECN06654
11	4/2/2020	RVU	DJW	JHAC	REBUILD MODEL AND REDRAWING DRAWING. ADDED NEW TWO TABLE TO INCLUDE SLIT AND NON-SLIT. CHANGED ALL A DIM AND B DIM MEASUREMENTS. UPDATED TITLE AND NOTES.	GAECN05626
10	02.10.15	BDK	VJS	RGR0	E. ADDED DUAL RIB PROFILE AND DETAIL F. REMOVED DENSITY FROM POLYETHYLENE	GB0222BP
09	5/09/14	BWG	VJS	JADE	REVISD DIMENSIONS AND WEIGHTS, REMOVED PREVIOUS REVISION BALLONS FOR CLARITY AND UPDATED TITLE BORDER, ADDED * TO PART NUMBERS, REVISED NOTE 1.	GB0222BP/09

TITLE						Slit & Non-slit Corrugated Loom Tubing					
ITEM REVISION NAME						CUSTOMER DRAWING					
DATASET FILE NAME						G03597BN/02					
UNLESS OTHERWISE SPECIFIED, DIMENSIONAL TOLERANCES ARE: IN [mm]											
.X ± .XX ±											
DRAWN BY						MATERIAL:					
CPE						Nylon 6 or Polyethylene					
DATE						DRAWING NUMBER:					
9-18-97						GB0222BP					
CHK						THIRD ANGLE PROJECTION					
VJS											
SCALE						SHT 1 OF 1					
NONE						A					