

Ordering Information

Part Number*	Devices	Tools	Color
PSL-DCPLX	10 standard	1	Red
PSL-DCPLX-BL	10 standard	1	Black
PSL-DCPLX-BU	10 standard	1	Blue
PSL-DCPLX-GR	10 standard	1	Green
PSL-DCPLX-IW	10 standard	1	International White
PSL-DCPLX-YL	10 standard	1	Yellow
PSL-DCPLX-OR	10 standard	1	Orange
PSL-DCPLX-IG	10 standard	1	International Gray
PSL-DCPLRX	10 recessed	1	Red
PSL-DCPLRX-BL	10 recessed	1	Black
PSL-DCPLRX-BU	10 recessed	1	Blue
PSL-DCPLRX-GR	10 recessed	1	Green
PSL-DCPLRX-IW	10 recessed	1	International White
PSL-DCPLRX-YL	10 recessed	1	Yellow
PSL-DCPLRX-OR	10 recessed	1	Orange
PSL-DCPLRX-IG	10 recessed	1	International Gray

*Available in bulk packages of 100 lock-in devices and five tools. To order bulk package add -C to the end of the part number

RJ45 Plug Lock-in Device

Secures RJ45 Connections

- Works with most patch cords, faceplates, patch panels, and VoIP phones

- Saves time and money associated with network downtime, security breaches, and hardware replacement due to theft

- Deters unauthorized users from moving or stealing VoIP phones, to aid in E911 availability and compliance

- Does not interfere with adjacent jacks or plugs

- Tool required for installation and removal, providing physical security

- Versions for standard and recessed jacks*

- Available in eight colors and two package quantities

*Standard devices have white cams; recessed devices have clear cams



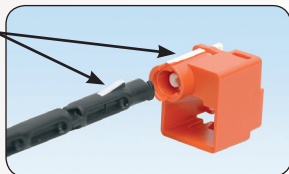
Notes:
The RJ45
Plug Lock-in
Device may not

be compatible with all shuttered jacks, overmolded cables or PANDUIT PANVIEW™ cables. It is recommended to test your specific patch cords and jacks before implementing widespread usage.

Installing Lock-in Device Onto RJ45 Plug

Step 1:

Align white line on tool with white line on device.

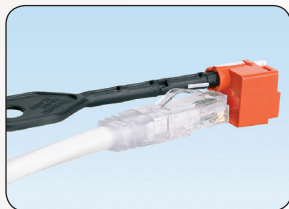


Step 2:

Insert tool into device and rotate tool clockwise 90°.

Step 3:

Push plug into device until it snaps into place. Check that plug is fully seated in the device.



Step 4:

Rotate tool counter-clockwise 90° and remove tool from device.

Removing RJ45 Plug From Jack

Step 1:

Align white line on tool with white line on device.

Step 2:

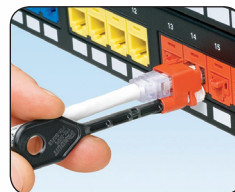
Insert tool into device and rotate tool clockwise 180°.

Step 3:

Remove plug from jack.

Step 4:

Rotate tool counter-clockwise 180° and remove tool from device.



Removing Lock-in Device From RJ45 Plug

Step 1:

Align white line on tool with white line on device.

Step 2:

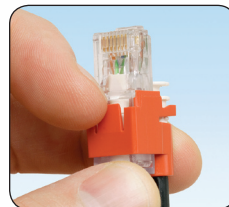
Insert tool into device and rotate tool clockwise 90°.

Step 3:

Use a screwdriver or fingernail to release locking tab on bottom of device. While holding release tab, push plug out of the device.

Step 4:

Rotate tool counter-clockwise 90° and remove tool from device.



Installing RJ45 Plug Into Jack

Insert plug into jack until plug locks into place. Lightly pull on the cable to confirm that plug is locked into the jack.

