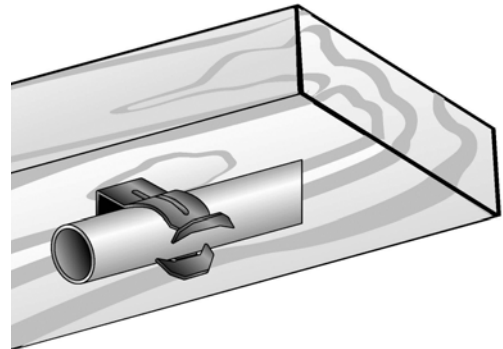
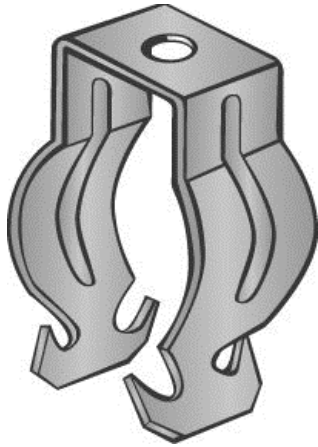


Part Number: P8P

Product Description: PUSH FIT CONDUIT CLIP FOR 1/2" CONDUIT WITH PLAIN MOUNTING HOLE

**Material Specifications**

Type: High Carbon Steel, Spring Tempered

Finish: Zinc Phosphate and Oil

Color: Black

Function Specifications**Compatible Wires and Cables**

AC/MC CABLE (OD):

Drop Wire:

Plain Rod (in):

Threaded Rods and Bolts

Tapped Holes:

Clearance Holes (in): 1/4

Threaded Rod Size (in):

Compatible Conduit

EMT Size (in): 1/2

Rigid/IMC (in):

Compatible Flanges and Studs

Flange Size (in):

Metal Stud Size (ins):

Static Load Rating

Vertical (lbs): 25

Horizontal (lbs): 15

Other**Codes and Regulatory**Regulatory
Certifications: -

Country of Origin: US

Packaging

General Packaging: Cardboard Box

Box Size: 7.5 X 5.5 X 4.5

Pieces per Package: 100

Other Box Features: Fold out handle

Document Information

Created By: DBLA

Checked By: DJW

Approved By: KLN

Customer Specification #: C11228

Revision Level: 01

ECN #: GAECN01482

Date: 12/10/2013