



NetKey® Cabling System

NetKey® Cabling System

The NetKey® Copper and Fiber Cabling System provides a complete, standards compliant cabling infrastructure solution for voice, data and video applications. NetKey® Modules feature the universal “keystone” design and are compatible with a wide assortment of modular patch panels, faceplates, and surface mount boxes. When teamed with complementary Panduit products, the NetKey® Solutions cover all your needs from the telecommunication room to the work area with the proven innovation and quality you depend on from Panduit.



Panduit and General Cable™ offer a comprehensive line of contractor-grade connectivity and cabling solutions. This world-class partnership provides guaranteed network performance and system reliability for customer requirements.

For the complete cable offering, reference the PanGen Structured Cabling Solutions Catalog CPCB154-SA-ENG.

General Cable is a registered trademark of General Cable Technologies Corporation. Panduit and NetKey are registered trademarks of Panduit Corp.

NetKey® Modules

Pages 4



NetKey® Copper Patch Cords

Page 4



NetKey® Fiber Adapters and Enclosures

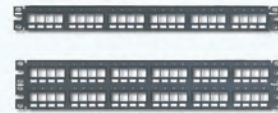
Page 5





NetKey® Fiber Optic Patch Cords and Pigtails

Pages 6 – 7



NetKey® Patch Panels

Page 8 – 9



NetKey® Faceplates and Surface Mount Boxes

Pages 10 – 11



NetKey® Audio/Video Modules and Inserts

Pages 12 – 13



Identification, Labeling Systems and Termination Tools

Page 14



Racks and Cable Management

Page 15

NetKey® Category 6A, 6, 5e and 3 Jack Modules

- Exceeds all industry performance standards for Category 6A, 6, 5e and 3
- Punchdown jack modules are 100% performance tested and individually serialized for future traceability
- Supports PoE, PoE+, and PoE++
- Meets ANSI/TIA 568-C.2 and ISO 11801 component requirements
- Snap in and out of keystone openings for easy moves, adds and changes
- Universal label includes T568A and T568B wiring schemes



NK6X88MIW
NK688MIW
NKP5E88MIW



NK6TMIW



NK5E88MIWY



NK388MIWY



NK366UMIWY



NK366MIWY

Part Number	Description	Color
-------------	-------------	-------

NetKey® Category 6A UTP Jack Modules*

NK6X88MIW	Category 6A, component compliant, 8-position, 8-wire keystone punchdown jack module.	Off White
NK6X88MIW-Q	Convenience pack of 25, Category 6A, component compliant, 8-position, 8-wire keystone punchdown jack modules.	Off White

NetKey® Category 6 UTP Jack Modules

NK6TMIW	Category 6, 8-position, 8-wire, keystone TP termination style jack module.	Off White
NK688MIW	Category 6, component compliant, 8-position, 8-wire, keystone punchdown jack module.	Off White
NK688MIW-Q	Convenience pack of 25, Category 6, component compliant, 8-position, 8-wire, keystone punchdown jack modules.	Off White

NetKey® Category 5e UTP Jack Modules*

NKP5E88MIW	Category 5e, component compliant, 8-position, 8-wire, keystone punchdown jack module.	Off White
NKP5E88MIW-Q	Convenience pack of 25, Category 5e, component compliant, 8-position, 8-wire, keystone punchdown jack modules.	Off White
NK5E88MIWY	Category 5e, component compliant, 8-position, 8-wire, keystone leadframe jack module.	Off White
NK5E88MIW-Q	Convenience pack of 25, Category 5e, component compliant, 8-position, 8-wire, keystone leadframe jack modules.	Off White

NetKey® Category 3 UTP Jack Modules**

NK388MIWY	Category 3, 8-position, 8-wire, keystone leadframe jack module.	Off White
NK366UMIWY	Category 3, 6-position, 6-wire, keystone leadframe jack module. Termination cap color-coded to USOC wiring scheme.	Off White
NK366MIWY	Category 3, 6-position, 6-wire, keystone leadframe jack module.	Off White

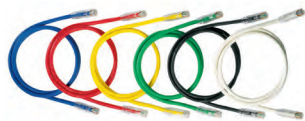
*For standard colors replace color suffix with IW (Off White), EI (Electric Ivory), IG (International Gray), WH (White), BL (Black), BU (Blue), RD (Red), YL (Yellow), GR (Green), OR (Orange) or VL (Violet). To order convenience package of 25 jack modules, add -Q to end of part number.

** For standard colors replace color suffix with IW (Off White), EI (Electric Ivory), IG (International Gray), WH (White) or BL (Black).

Termination tools found on page 13.

NetKey® Copper UTP Patch Cords

- Meet all industry performance standards for Category 6A, 6 and 5e
- Available in a variety of colors and lengths for design flexibility
- 100% performance tested



NK6PC3BUY
NK6APC3BU



NK5EPC3BUY

Part Number	Description
-------------	-------------

Category 6A

NK6APC3BU*	Category 6A, UTP patch cord with modular plugs on each end.
------------	---

Category 6

NK6PC3BUY*	Category 6, UTP patch cord with modular plugs on each end.
------------	--

Category 5e

NK5EPC3BUY*	Category 5e, UTP patch cord with modular plugs on each end.
-------------	---

Category 6A = For additional lengths, replace "3" with 5, 7, 10, 14, 20, 25, 30, 40 and 50 ft.

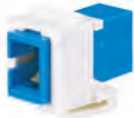
Category 5e and 6 = For additional lengths, replace "3" with 1 – 20, 25, 30, 35, 40, 45, and 50 ft.

*Patch cords listed in BU (Blue). For additional colors, replace "BU" with IW (Off White), RD (Red), YL (Yellow) or GR (Green) before Y in the part number. For example, the part number of a blue, Category 6, 5-foot patch cord is NK6PC5BUY.

NetKey® Fiber Optic Adapters



NKDLCMIW



NKSCMZW



NKSTMIW

Part Number	Description	Color
LC Adapters		
NKDLCMIW	Keystone module supplied with one LC Sr./Jr. SFF multimode duplex adapter with phosphor bronze split sleeves.	Off White
NKDLCMZW	Keystone module supplied with one LC Sr./Jr. SFF singlemode duplex adapter with zirconia ceramic split sleeves.	Off White
SC Adapters		
NKSCMIW	Keystone module supplied with one SC multimode simplex adapter with phosphor bronze split sleeve.	Off White
NKSCMZW	Keystone module supplied with one SC singlemode simplex adapter with zirconia ceramic split sleeve.	Off White
ST Adapters		
NKSTMIW	Keystone module supplied with one ST multimode simplex adapter with phosphor bronze split sleeve.	Off White

For standard colors other than IW (Off White), replace suffix with BL (Black), EI (Electric Ivory), IG (International Gray) or WH (White).

NetKey® Fiber Enclosures

- Factory configured with 6, 12, or 24 duplex LC or SC adapters for fast and easy cabling and installation
- Slide-out drawer slides forward a full 300mm for service access to all fiber terminations, connections, and/or splices
- Mounting hardware and fiber routing accessory kit included
- Supports fusion splicing with appropriate slack storage and cable management provisions
- Simple two-piece, all-metal body construction for easy and economical installation with no loose components to misplace; improved protection over plastic fiber drawers



NKFD1W12EIDLC

Part Number	Description
Fiber Enclosures with SC Adapters*	
NKFD1W6AQDSC	Pre-loaded fiber drawer with six (6) SC aqua duplex adapters.
NKFD1W6BLDSC	Pre-loaded fiber drawer with six (6) SC black duplex adapters.
NKFD1W6EIDSC	Pre-loaded fiber drawer with six (6) SC electric ivory duplex adapters.
NKFD1W6BUDSCZ	Pre-loaded fiber drawer with six (6) SC blue duplex adapters with zirconia ceramic split sleeve.
Fiber Enclosures with LC Adapters**	
NKFD1W12AQDLC	Pre-loaded fiber drawer with twelve (12) LC aqua duplex adapters.
NKFD1W12BLDLC	Pre-loaded fiber drawer with twelve (12) LC black duplex adapters.
NKFD1W12EIDLC	Pre-loaded fiber drawer with twelve (12) LC electric ivory duplex adapters.
NKFD1W12BUDLCZ	Pre-loaded fiber drawer with twelve (12) LC blue duplex adapters with zirconia ceramic split sleeve.

*For a 12 adapter enclosure, replace the 6 with 12.

**For a 24 adapter enclosure, replace the 12 with 24.

NetKey® Fiber Optic Patch Cords and Pigtails*

- Compliant with ANSI/TIA 568-C.3-1 and ISO/IEC 11801, TIA-604-5 (FOCIS-5), and UL 1666 (OFNR) flame rating
- Patch cords and pigtails include OM3 fiber or OM1, OM2, or OS2 fiber in 900µm tight-buffered fiber, 1.6mm or 3.0mm duplex zipcord jacketed cable
- 100% performance tested assures that patch cords and pigtails are standard compliant, Riser rated jacket meets UL 1666 (OFNR) flame rating for standard complaint safety
- Q.C. identification label quality control reference provides lifetime traceability of test data



ST to ST Patch Cord



SC to SC Patch Cord



LC to LC Patch Cord



SC to LC Patch Cord

Part Number	Description
ST to ST Patch Cords	
NKFP623R22SM001	OM1 2 fiber 3.0mm riser jacket patch cord ST to ST – 1 meter.
NKFP523R22SM001	OM2 2 fiber 3.0mm riser jacket patch cord ST to ST – 1 meter.
NKFPX23R22SM001	OM3 2 fiber 3.0mm riser jacket patch cord ST to ST – 1 meter.
NKFP923R22SM001	OS2 2 fiber 3.0mm riser jacket patch cord ST to ST – 1 meter.
SC to SC Patch Cords	
NKFP623RSSSM001	OM1 2 fiber 3.0mm riser jacket patch cord SC duplex to SC duplex – 1 meter.
NKFP523RSSSM001	OM2 2 fiber 3.0mm riser jacket patch cord SC duplex to SC duplex – 1 meter.
NKFPX23RSSSM001	OM3 2 fiber 3.0mm riser jacket patch cord SC duplex to SC duplex – 1 meter.
NKFP923RSSSM001	OS2 2 fiber 3.0mm riser jacket patch cord SC duplex to SC duplex – 1 meter.
LC to LC Patch Cords	
NKFP62ERLLSM001	OM1 2 fiber 1.6mm riser jacket patch cord LC duplex to LC duplex – 1 meter.
NKFP52ERLLSM001	OM2 2 fiber 1.6mm riser jacket patch cord LC duplex to LC duplex – 1 meter.
NKFPX2ERLLSM001	OM3 2 fiber 1.6mm riser jacket patch cord LC duplex to LC duplex – 1 meter.
NKFP92ERLLSM001	OS2 2 fiber 1.6mm riser jacket patch cord LC duplex to LC duplex – 1 meter.
SC to LC Patch Cords	
NKFP62ERLSSM001	OM1 2 fiber 1.6mm riser jacket patch cord LC to SC – 1 meter.
NKFP52ERLSSM001	OM2 2 fiber 1.6mm riser jacket patch cord LC to SC – 1 meter.
NKFPX2ERLSSM001	OM3 2 fiber 1.6mm riser jacket patch cord LC to SC – 1 meter.
NKFP92ERLSSM001	OS2 2 fiber 1.6mm riser jacket patch cord LC to SC – 1 meter.

*Additional lengths are available for:

OM1 and OM2 available in lengths of 1-5, 10, 15, 20m.

OS2 and OM3 available in lengths of 1-15, 20, 25, 30, 35, 40, 45, 50m.

For example, the part number for a 2 meter, ST to ST, OM1, riser duplex patch cord would change from NKFP623R22SM001 to NKFP623R22SM002.

NetKey® Fiber Optic Patch Cords and Pigtails* (continued)



LC to Pigtail



SC to Pigtail



ST to Pigtail

Part Number	Description
LC Pigtail	
NKFP61BN1NNM001	OM1 1 fiber 900µm buffered pigtail LC – 1 meter.
NKFP51BN1NNM001	OM2 1 fiber 900µm buffered pigtail LC – 1 meter.
NKFPX1BN1NNM001*	OM3 1 fiber 900µm buffered pigtail LC – 1 meter.
NKFP91BN1NNM001*	OS2 1 fiber 900µm buffered pigtail LC – 1 meter.
SC Pigtail	
NKFP61BN3NNM001	OM1 1 fiber 900µm buffered pigtail SC – 1 meter.
NKFP51BN3NNM001	OM2 1 fiber 900µm buffered pigtail SC – 1 meter.
NKFPX1BN3NNM001*	OM3 1 fiber 900µm buffered pigtail SC – 1 meter.
NKFP91BN3NNM001*	OS2 1 fiber 900µm buffered pigtail SC – 1 meter.
ST Pigtail	
NKFP61BN2NNM001	OM1 1 fiber 900µm buffered pigtail ST – 1 meter.
NKFP51BN2NNM001	OM2 1 fiber 900µm buffered pigtail ST – 1 meter.
NKFPX1BN2NNM001	OM3 1 fiber 900µm buffered pigtail ST – 1 meter.
NKFP91BN2NNM001	OS2 1 fiber 900µm buffered pigtail ST – 1 meter.

*2 meter pigtails available for these parts. For 2 meter configuration, replace last digit with "2". For example, NKFPX1BN3NNM002.

NetKey® Fiber Optic Pigtail Kits



Part Number	Description
LC to pigtail (OS2)	
NKFP91BN1NKM001	1-fiber OS2 LC to pigtail, 900µm tight buffered cable, 1m (12-color pigtail set).
LC to pigtail (OM3)	
NKFPX1BN1NKM001	1-fiber OM3 LC to pigtail, 900µm tight buffered cable, 1m (12-color pigtail set).

NetKey® Patch Panels

- Mount to standard ANSI/TIA 19" racks
- Punchdown patch panels meet all industry performance standards for Category 6A, 6 and 5e
- Modular patch panels accept all NetKey® Modules
- Molded patch panels made of strong polymer material, with port numbering front and back
- Optional angled versions available for high density installations
- Strain relief bars assist in cable management and bend radius control



NK6XPPG24Y
NK6PPG24Y
NK5EPPG24Y



NKA6XPPG24Y
NKA6PPG24Y
NKA5EPPG24Y



NK6PPG12WY
NK5EPPG12WY

Part Number	Description
Punchdown Patch Panels*	
Category 6A	
NK6XPPG24Y	Category 6A punchdown patch panel, 24 port, 1 RU.
NK6XPPG48Y	Category 6A punchdown patch panel, 48 port, 2 RU.
NKA6XPPG24Y	Category 6A angled punchdown patch panel, 24 port, 1 RU.
NKA6XPPG48Y	Category 6A angled punchdown patch panel, 48 port, 2 RU.
NK6XPP24P	Category 6A molded, flat, punchdown patch panel, 24 port, 1RU.
NK6XPP48P	Category 6A molded, flat, punchdown patch panel, 48 port, 2RU.
NK6XPPN24P	Category 6A molded, flat, punchdown patch panel, 24-port, 1 RU with no labels.
NK6XPPN48P	Category 6A molded, flat, punchdown patch panel, 48-port, 1 RU with no labels.
Category 6	
NK6PPG12WY	Category 6, 12-port punchdown patch panel. Mounts to wall with standard 89D bracket (WB89D).
NKA6PPG24Y	Category 6, 24-port, angled punchdown patch panel, 1 RU.
NKA6PPG48Y	Category 6, 48-port, angled punchdown patch panel, 2 RU.
NK6PPG24Y	Category 6, 24-port, punchdown patch panel, 1 RU.
NK6PPG48Y	Category 6, 48-port, punchdown patch panel, 2 RU.
NK6PP24P	Category 6, 24-port, molded punchdown patch panel, 1 RU.
NK6PP48P	Category 6, 48-port, molded punchdown patch panel, 2 RU.
NK6PPN24P	Category 6 molded, flat, punchdown patch panel, 24-port, 1 RU with no labels.
NK6PPN48P	Category 6 molded, flat, punchdown patch panel, 48-port, 1 RU with no labels.
Category 5e	
NK5EPPG12WY	Category 5e, 12-port punchdown patch panel. Mounts to wall with standard 89D bracket (WB89D).
NKA5EPPG24Y	Category 5e, 24-port, angled punchdown patch panel, 1 RU.
NKA5EPPG48Y	Category 5e, 48-port, angled punchdown patch panel, 2 RU.
NK5EPPG24Y	Category 5e, 24-port, punchdown patch panel, 1 RU.
NK5EPPG48Y	Category 5e, 48-port, punchdown patch panel, 2 RU.
NK5EPP24P	Category 5e, 24-port, molded punchdown patch panel, 1 RU.
NK5EPP48P	Category 5e, 48-port, molded punchdown patch panel, 2 RU.
NK5EPPN24P	Category 5e molded, flat, punchdown patch panel, 24-port, 1 RU with no labels.
NK5EPPN48P	Category 5e molded, flat, punchdown patch panel, 48-port, 1 RU with no labels.

*Punchdown patch panels are color-coded for T568A and T568B wiring schemes. Punchdown tools found on page 13.

NetKey® Patch Panels (continued)



NKFP12W



NKFP24Y



NKFP48Y



NKPPA48FMY



WB89D



SRB19BLY



SRBM19BLY

Part Number	Description
Modular Patch Panels	
NKFP12W	12-port modular patch panel with front removable faceplate. Mounts to wall with standard 89D bracket (WB89D).
NKFP24Y	24-port modular patch panel with front removable faceplate, 1 RU.
NKFP48Y	48-port modular patch panel with front removable faceplate, 2 RU.
NKPPA24FMY	24-port flush mount angled modular patch panel, 1 RU.
NKPPA48FMY	48-port flush mount angled modular patch panel, 2 RU.
NKPP24FMY	24-port flush mount modular patch panel, 1 RU.
NKPP48FMY	48-port flush mount modular patch panel, 2 RU.
Wall Mount Bracket	
WB89D	Wall mount bracket. Ideal for use with 12-port punchdown or modular patch panels.
Strain Relief Bars	
SRB19BLY	Strain relief bar extends 2" from standard 19" rack for additional cable support.
SRBM19BLY	Strain relief bar and Tak-Ty® Hook & Loop Cable Ties for additional cable support.
SRBS19BL-XY	Straight strain relief bar.

NetKey® Faceplates

- Accept all NetKey® Modules
- Available in a variety of port densities

- Optional labels for easy port identification



Part Number	Description	Color‡
Flush Mount Screw-On Faceplates‡		
NK1FNIW*	Single gang, flush mount vertical faceplate.	Off White
NK1FIWY**	Single gang, flush mount vertical faceplate with labels.	Off White
NK2HSFIWY^	Single gang, 2-port, sloped, horizontal faceplate with labels.	Off White
NK4VSFIWY	Single gang, 4-port, sloped, vertical faceplate with labels.	Off White
Stainless Steel Faceplates		
NKF2S^^	Single gang, stainless steel, vertical faceplate with labels.	Stainless

*Available in 1, 2, 3, and 4 port density configurations. For other port densities replace the 1 with appropriate port density.

**Available in single gang 1, 2, 4, and 6-port density configurations and 8 or 12-port double gang port density configurations. For other configurations, replace 1 with appropriate port density.

^Available in 2 or 4 port density. For 4 port, replace 2 with 4.

^^Available in 2, 4, or 6 port density configurations. When mounting, opening should be a minimum of 2" wide. For other port densities, replace 2 with 4 or 6.

‡For standard colors other than IW (Off White), replace IW (Off White) with EI (Electric Ivory), WH (White), IG (International Gray) or BL (Black). NK2HSF*** and NK4HSF*** not available in BL (Black).

NetKey® Faceplate Frames, Modular Inserts, and Adapter

- Inserts and faceplate frames enable design flexibility
- Accept all NetKey® Modules

- Available in a variety of port densities and orientation
- Optional labels for easy port identification



Part Number	Description	Color
Executive Series Faceplate Frames		
CBEIWY	Single gang faceplate frame accepts two 1/2 size modular inserts or three 1/3 size modular inserts. Supplied with labels and label cover/screw covers.	Off White
CBEIW-2GY	Double gang faceplate frame accepts four 1/2 size modular inserts or six 1/3 size modular inserts. Supplied with labels and label cover/screw covers.	Off White
Classic Series Faceplate Frames		
CBIW	Single gang faceplate frame accepts two 1/2 size modular inserts or three 1/3 size modular inserts.	Off White
CBIW-2G	Double gang faceplate frame accepts two 1/2 size modular inserts or six 1/3 size modular inserts.	Off White
Modular Inserts		
NKHS2IW-X	1/2 size, sloped modular insert. Accepts two NetKey® Modules.	Off White
NKHS2SIW-X	1/2 size, sloped, shuttered, modular insert. Accepts two NetKey® Modules.	Off White
NKHF2MIW-X	1/3 size flat modular insert. Accepts two NetKey® Modules.	Off White
CHB2MIW-X	1/3 blank modular insert reserves space for future use.	Off White
NKBTA1IW-X	Adapter accepts one NetKey® Module, for Bticino Light series faceplates.	Off White

For standard colors other than IW (Off White), replace suffix with EI (Electric Ivory), WH (White), IG (International Gray) or BL (Black). Audio/Video inserts found on page 13.

NetKey® Module Frames and Furniture Faceplate



Part Number	Description	Color
NK2106MFIW	Screw mount "106" duplex module frame. Accepts two NetKey® Modules.	Off White
NK4106MFIW	Screw mount "106" duplex module frame. Accepts four NetKey® Modules.	Off White
NK2RMFIW	Screw mount module frame. Accepts two NetKey® Modules. Compatible with standard NEMA outlet boxes and rectangular faceplates.	Off White
NK4RMFIW	Screw mount module frame. Accepts four NetKey® Modules. Compatible with standard NEMA outlet boxes and rectangular faceplates.	Off White
NK4MFIW	Snap on modular furniture faceplate. Accepts four NetKey® Modules.	Off White
NK4MFABL	Snap on angled, modular furniture faceplate. Accepts four NetKey® Modules.	Black

For standard colors other than Off White, replace IW in part number with EI (Electric Ivory), WH (White), IG (International Gray) or BL (Black).

NetKey® Phone Plate



Part Number	Description
KWPY	Stainless steel wall phone plate accepts one NetKey® Module.
KWP5EY	Stainless steel wall phone plate with one punchdown Category 5e keystone jack module.
KWP6PY	Stainless steel wall phone plate with one punchdown Category 6 keystone jack module.

Wall mount faceplate kits compatible with wall mountable phones with short patch cord connections to the jack module.

NetKey® Surface Mount Boxes

- Accept all NetKey® Modules
- Include mounting screws and adhesive tape

- Compatible with Panduit® LD3, LD5, and LD10 Raceway



Part Number	Description	Color
NK2BXIW-A	Surface mount box accepts two NetKey® Modules.	Off White
NK4BXIW-AY	Surface mount box accepts four NetKey® Modules	Off White
NK6BXIW-AY	Surface mount box accepts six NetKey® Modules.	Off White
CBM-X	Optional magnet for mounting on metal surfaces. Compatible with NK2BXIW-A and NK4BXIW-AY.	—

For surface mount box standard colors other than IW (Off White), replace suffix with EI (Electric Ivory), IG (International Gray) or WH (White).

NetKey® Audio/Video Modules



NKFIW



NKBNCMIWY



NKRSMBIWY



NKRTMRIW



NKRPMRIW



NKSPMIW



NKSVCIW



NKBPBIWY



NK35MSSIW



NK35MSCIW



NKHDMIW



NKUSBAAIW



NKBMIW-X

Part Number	Description	Color
-------------	-------------	-------

F-Type Module

NKFIW	Keystone module supplied with F-type 3 GHz coupler.	Off White
-------	---	-----------

50 Ohm BNC Coax Module

NKBNCMIWY	Keystone module supplied with 50 ohm industry standard coax bulkhead coupler.	Off White
-----------	---	-----------

RCA Modules

NKRSMRIWY	Keystone module supplied with RCA solder type connector. Inserts available in multiple colors.	Off White
NKRTMRIW	Keystone module supplied with RCA pass-through connector. Inserts available in multiple colors.	Off White
NKRPMRIW	Keystone module supplied with RCA punchdown connector. Inserts available in multiple colors.	Off White

For RCA modules, replace second R (Red) with B (Black), Y (Yellow) or W (White) for alternate insert colors. Example: NKRTMRIW is Keystone RCA module with red insert, NKRTMYIW is Keystone RCA module with yellow insert.

S-Video Modules

NKSPMIW	Keystone module supplied with SVHS punchdown connector.	Off White
NKSVCIW	Keystone module supplied with S-Video pass-through connector.	Off White

5-Way Binding Post Module

NKBPBIWY	Keystone module supplied with 5-way binding post.	Off White
----------	---	-----------

For 5-Way Binding Post Module, replace second B (Black) with R (Red). Example: NKBPBIWY Keystone module with black insert, NKBPRIWY is Keystone module with red insert.

3.5mm Stereo Connector

NK35MSSIW	Keystone module supplied with 3.5mm (1/8") stereo solder type headset connector.	Off White
NK35MSCIW	Keystone module supplied with 3.5mm (1/8") stereo headset coupler.	Off White

HDMI Coupler

NKHDMIW	Keystone module supplied with HDMI 2.0 Type A female to female coupler module.	Off White
---------	--	-----------

USB Coupler

NKUSBAAIW	Keystone module supplied with one USB 2.0 female A to female A coupler module.	Off White
-----------	--	-----------

Blank Module

NKBMIW-X	Blank keystone module reserves space for future use.	Off White
----------	--	-----------

For standard colors other than IW (Off White), replace suffix with EI (Electric Ivory), WH (White), IG (International Gray) or BL (Black). 5-Way Binding Post Module (NKBP^IWY) only available in EI (Electric Ivory) and WH (White).

NetKey® Audio/Video Inserts



CHR3RGBIW



CHR3WYRIW



CHD9CIWY



CHD15HDCIWY



CHD15HDSCIWY

Part Number	Description	Color
RCA Inserts		
CHR3RGBIW	1/3 insert supplied with three RCA pass-through couplers. Inserts are red, green and blue. Ideal for component video.	Off White
CHR3WYRIW	1/3 insert supplied with three RCA pass-through couplers. Inserts are white, yellow and red. Ideal for composite video or left/right stereo.	Off White
D-Subminiature Inserts		
CHD9CIWY	1/3 insert supplied with 9-pin female to female coupler.	Off White
CHD15HDCIWY	1/3 insert supplied with 15-pin female to female coupler. SVGA compatible.	Off White
CHD15HDSCIWY	1/3 insert supplied with 15-pin HD screw down DB connector mounted to printed circuit board. SVGA compatible.	Off White

For standard colors other than IW (Off White), replace suffix with EI (Electric Ivory), WH (White), IG (International Gray) or BL (Black). Faceplate frames found on page 10.

Termination Tools



PDT110



JR-PAN-2



CJT



CGJT



NKSPB

Part Number	Description
-------------	-------------

Pan-Punch® Termination Tool

PDT110	Single pair punchdown tool and blade terminates and cuts UTP cable in one operation. Ideal for use with Pan-Punch® Punchdown System.
PDTH110	Replacement blade for single pair punchdown tool (PDT110).

NetKey® Jack Module Termination Tools

JR-PAN-2*	Fluke** JackRapid Termination Tool for Category 5e, Category 6, and Category 6A NetKey® Punchdown Modules.
CJT-X	Termination tool for Category 3 NetKey® Leadframe Jack Modules.
CGJT	Terminates Giga-TX™ TP Style Jack Modules.

Punchdown Base

NKSPB	Base used to assist in terminating punchdown modules.
-------	---

*Fluke JackRapid Termination Tool available through distribution. Contact Fluke customer service at 800-283-5853 to locate a local distributor. **Fluke is a registered trademark of Fluke Corporation.

Identification and Labeling Systems

- Variety of labeling systems and labels enable quick and easy network identification



LS8EQ-KIT



LS8EQ

LS8E



LS8E-KIT



TDP43ME



S100X150VAC
and S100X150VA1Y

Part Number	Description
-------------	-------------

PanTher™ LS8EQ and Cougar™ LS9Q Hand-Held Thermal Transfer Printers

LS8EQ-KIT-ACS	Includes LS8EQ printer with QWERTY keypad, one cassette of S100X150VAC self-laminating labels, six AA alkaline batteries, LS8E-ACS, LS8-CASE, LS8-PCKIT, LS8-IB, LS8-WS, quick reference card and operator's manual.
LS8EQ-KIT	Includes LS8EQ printer with QWERTY keypad, one cassette of S100X150VAC self-laminating labels, six AA alkaline batteries, LS8-CASE, LS8-PCKIT, LS8-IB, LS8-WS, quick reference card and operator's manual.
LS8EQ	Includes LS8EQ printer with QWERTY keypad, one cassette of S100X150VAC self-laminating labels, six AA alkaline batteries and quick reference card.

PanTher™ LS8E Hand-Held Thermal Transfer Printer and Accessories

LS8E	LS8E printer, one cassette of self-laminating labels, six AA alkaline batteries and quick reference card.
LS8E-KIT	LS8E printer, one cassette of self-laminating labels, six AA alkaline batteries, rigid carrying case, LS8-PCKIT, LS8-IB, operator's manual and quick reference card.
S100X150VAC	Self-laminating, white vinyl label for use with LS8E printer.

Thermal Transfer Desktop Printer and Accessories

TDP43ME	300 dpi printer; includes printer, Panduit® Easy-Mark™ Labeling Software, RMEH4BL hybrid black ribbon, AC power adapter with US power cord, USB cable, user manual, quick start card, and driver disk.
S100X150VA1Y	Self-laminating, white vinyl label for use with thermal transfer desktop printer.

For complete identification offering, reference the Panduit® Network and Infrastructure Solutions Catalog (NCCB71--SA-ENG) or visit www.panduit.com.

Racks and Cable Management

- Cable management products and accessories maintain bend radius control and cable performance while bundling and securing cable to prevent snags and stress from over bending



ER4P23



WMPV45E



WMPSE



WMP1E



CMPH1



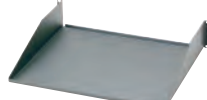
CMPH2



CMPHF1



SRM19FM1



SRM19FM2



RGS134-1Y



GPQC10-1/0



RGCBNJ660P22

Part Number	Description
ER4P29	4 post EIA rack with #12-24 threaded rails. Dimensions: 84.0"H x 20.3"W x 29.0"D (2134mm x 515mm x 737mm). 45 RU.
WMPV45E	NetRunner™ Front and Rear Vertical Cable Manager with dual hinged cover, wire retainers and side mount brackets, 45 RU.
WMPSE	PatchLink™ Front and Rear Horizontal Cable Manager with dual hinged cover, 1 RU.
WMP1E	PatchLink™ Front and Rear Horizontal Cable Manager with dual hinged cover, 2 RU.
CMPH1	OpenAccess™ Front and Rear Horizontal Cable Manager with optional snap on cover, 1 RU.
CMPH2	OpenAccess™ Front and Rear Horizontal Cable Manager with optional snap on cover, 2 RU.
CMPHF1	OpenAccess™ Front only Horizontal Cable Manager with optional snap on cover, 1 RU.
SRM19FM1	Rack mount shelf, 30 lb. capacity, 1 RU.
SRM19FM2	Rack mount shelf, 50 lb. capacity, 2 RU.
RGS134-1Y	Rack grounding strip 78.65"L x 0.67"W x 0.05"D (2mm x 17mm x 1.27mm). Provided with 5cc of antioxidant, one grounding sticker, and three each M6 x 12mm and #12-24 x 1/2" thread-forming screws.
GPQC10-1/0	Access floor grounding clamp for 7/8" square, 1" round, and 1-1/8" round pedestals.
RGCBNJ660P22	Common bonding network to rack jumper kit. Provided with HTAP that bonds to MCBN sizes ranging from 16mm² – 25mm².

For complete cable management and grounding/bonding offering, reference the Panduit® Network and Infrastructure Solutions Catalog (NCCB71--SA-ENG) or visit www.panduit.com.



PANDUIT®

Panduit Corp.
World Headquarters
Tinley Park, IL 60487

800.777.3300

www.panduit.com