



Space Saving Cable Management Rack Systems

Maximize Space Utilization, Enhance Network Reliability

The trend towards consolidation, virtualization and automation in the enterprise is driving the need to maximize space utilization to reduce capital expenditures and operational costs while maintaining network reliability and availability. This trend is placing greater demands on the physical infrastructure to help manage growing cable densities, larger network equipment and increasing energy usage.

Space Optimized, High Capacity Cable Management Systems

Panduit builds on years of experience as a leader in cable management, integrating best practices and application knowledge to develop highly reliable and efficient physical infrastructure solutions. Panduit's comprehensive offering of vertical cable management, horizontal cable management, and rack solutions reduces space required to route, manage and protect high cable capacities, providing the lowest total cost of ownership. These product sets can be combined to provide an optimized solution for virtually any application. PatchRunner™ and NetRunner™ Vertical Cable Management Systems address the needs of the data center and telecommunications rooms to deliver improved network performance and reduced real estate costs. Superior cable management features and innovative vertical RU mounting maximize capacity and enable efficient moves, adds, and changes to reduce operational costs.

PatchRunner™ High Capacity Vertical Cable Management System

PatchRunner™ High Capacity Vertical Cable Managers are optimized to provide the maximum amount of capacity, flexibility and accessibility for high density switch and server applications.

NetRunner™ High Capacity Vertical Cable Management System

NetRunner™ High Capacity Vertical Cable Managers are designed to provide the best combination of features and value for standard density enterprise telecommunications rooms and data center applications.

Thermal Management

Panduit's passive, optimized thermal management solutions enable high density, high heat load data center design while reducing energy costs.

2 Post and 4 Post Racks

PatchRunner™ and NetRunner™ High Capacity Systems can be seamlessly integrated into Panduit's versatile 2 post and 4 post racks. Designed for today's larger network equipment, Panduit racks provide strength, capacity and thermal features that help ensure network availability. The 2 post and 4 post rack thermal accessories provide proper heat dissipation of active equipment, improving network reliability.

Reduce Real Estate Cost and Space Utilization by **35%** with Panduit High Capacity Cable Management Systems



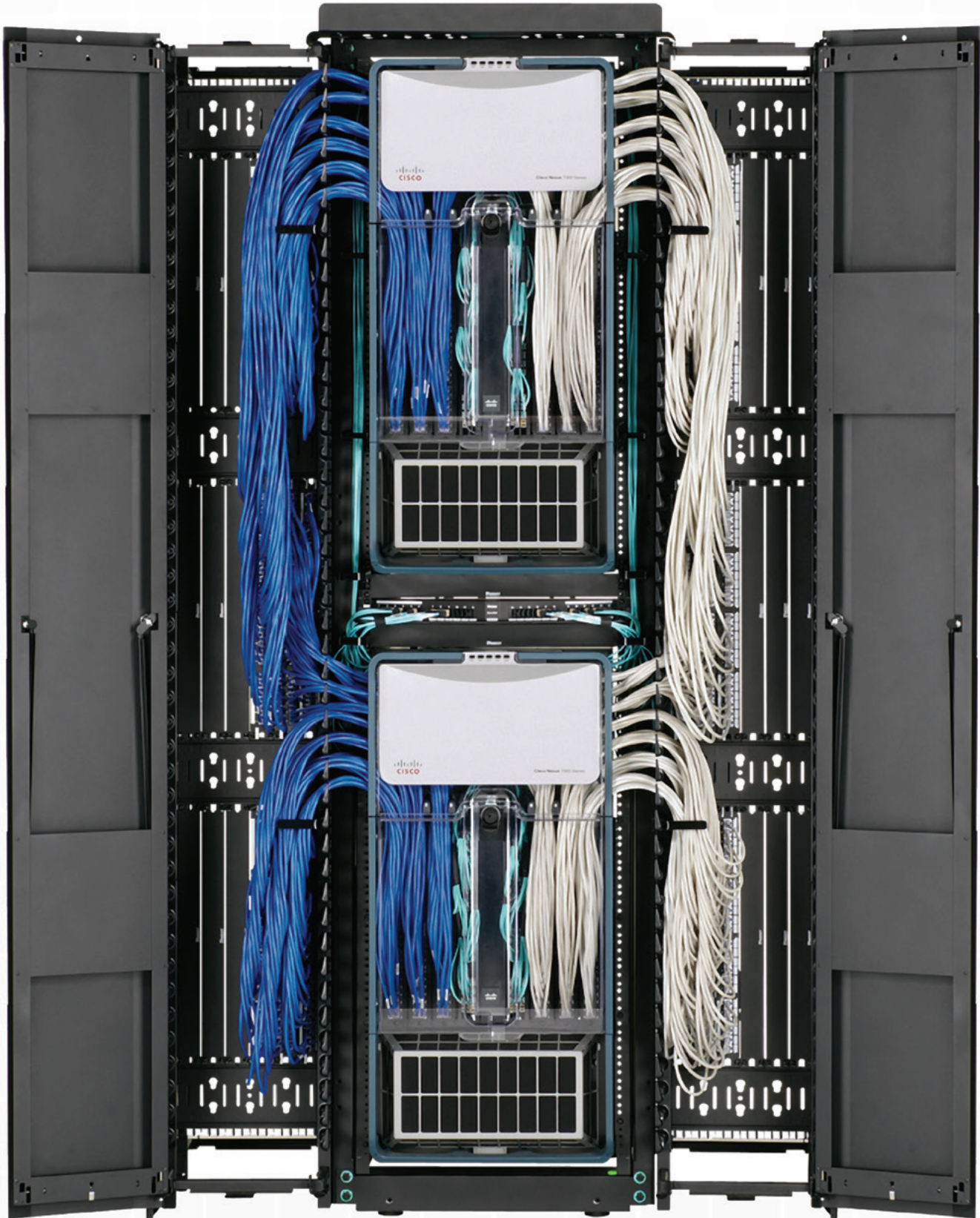
Floor Space Required

Layout	Traditional NetRunner™ Vertical Cable Management System	High Density PatchRunner™ High Capacity Vertical Cable Management System	Vertical Patching PatchRunner™ High Capacity Vertical Cable Management System
Footprint Width	114.6" (2.91m)	68.6" (1.74m)	44.3" (1.13m)
Areas	21.1 Sq. ft.	13.4 Sq. ft.	8.7 Sq. ft.
Real Estate Cost	\$54,016	\$34,304	\$22,272

Real estate cost based on a 2010 Gartner estimate for a Tier 3 data center.
Refer to page 18 and 19 for capacity and space requirements for specific solutions.

High Density Solutions for the Cisco^ Nexus 7010 Switch

High performance network switching requires innovation in every aspect of the physical infrastructure. The right solution helps manage equipment, connectivity, and available space for maximum density, scalability and usability. The PatchRunner™ High Capacity Vertical Cable Management System offers the highest cable capacities for maximum densities, scalability, and superior space utilization.



^Cisco is a registered trademark of Cisco Technology Inc.

**Representative offering only,
visit www.panduit.com/enterprisenetworks**

Maximum Capacity with Minimal Space



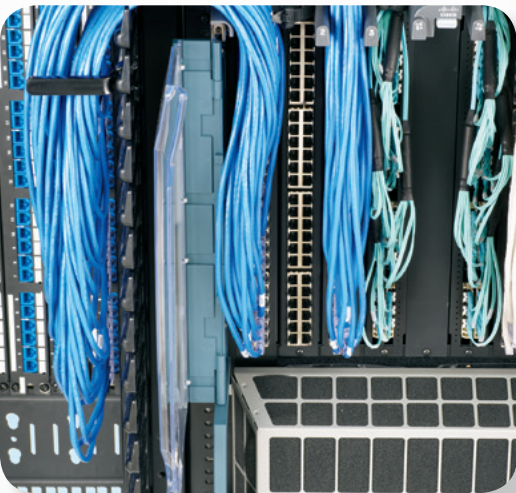
- Vertical patching enables two Cisco^ Nexus 7010 Switches to be deployed within a single rack, eliminating the need for a separate patching rack

- Strong, flexible fingers support Category 6A cables without deforming



- Enables standard 19" patch panels to be mounted vertically, freeing up rack spaces for additional equipment

- Allows patch panels to be positioned near switch ports, optimizing patch cord lengths



- Accepts either copper or fiber patch panels
- Minimizes slacking and allows for a more efficient use of the vertical manager space

Maximum Versatility and Strength



- The 4 post rack depth encases Nexus 7010 switches, providing increased physical protection

- Rack features allow quick POU mounting

- UL listed 2500 lb. (1134kg) load rating securely supports two Nexus 7010 switches and cabling

Infrastructure Showcase

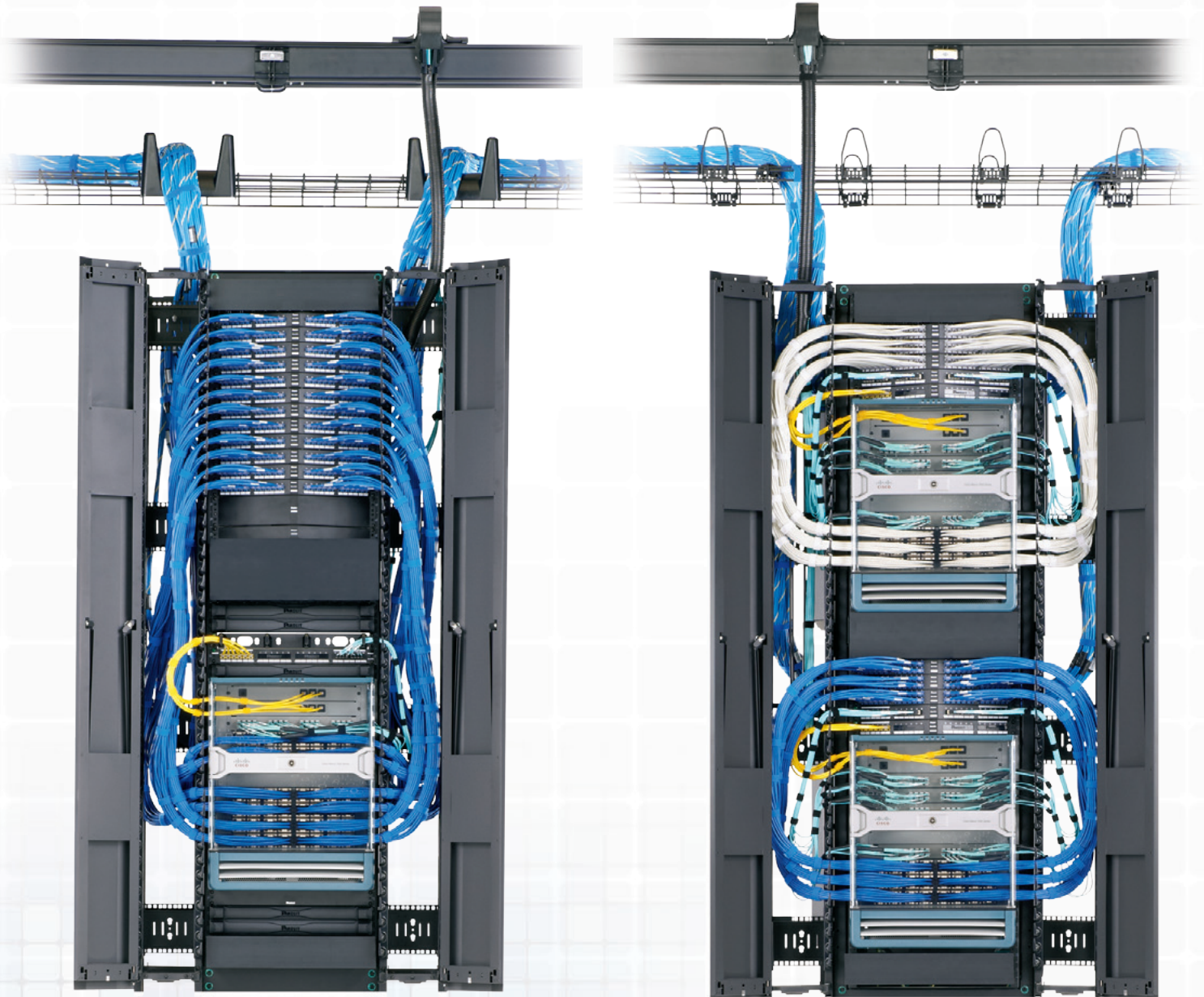


- The push shut door with visual and audible feedback delivers a clean aesthetic look

- End panels enable the vertical managers to be closed off, increasing protection and providing a clean look at the end of your lineup

High Density Solutions for the Cisco^ Nexus 7009 Switch

Effectively deploying high performance network switches requires in-depth knowledge of cable management, infrastructure, thermal management, and the ability to apply that knowledge in the creation of superior solutions.



Equipment management protects equipment, delivers UL rated support, and enables equipment airflow patterns. Vertical cable management provides slacking of patch cords, and provides options to simplify system organization and interface to the system-wide infrastructure

- FiberRunner® and Wyr-Grid® Overhead Routing Systems (depicted at top left and right) route, manage, and protect cables throughout the data center*.

Cable Management



- Space between individual fingers organize up to 48 Category 6A cables



- Deep vertical managers provide space to manage high densities

Thermal Management



- Vertical strain relief bars effectively manage structured cabling in the rear of the rack and separate cable types

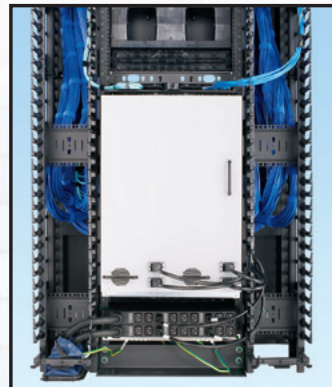


- Flexible power outlet unit mounting for any equipment power requirements

Infrastructure



- Open areas enable equipment airflow patterns



- Front to back spaces can be closed off for hot/cold aisle applications

PatchRunner™ High Capacity Vertical Cable Management System

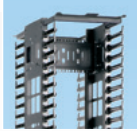
1 4 Post Rack

- R4P**
84.0"H x 23.25"W x 30.0"D
45 rack spaces
- R4P23**
84.0"H x 23.25"W x 23.0"D
45 rack spaces
- R4P36**
84.0"H x 23.25"W x 36.0"D
45 rack spaces
- R4P42**
84.0"H x 23.25"W x 41.5"D
45 rack spaces



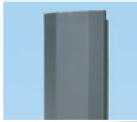
2 PEV12

- PatchRunner™ High Capacity Vertical Cable Managers
- Available in 6", 8", 10", and 12" widths



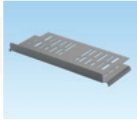
3 PED12B1

- PatchRunner™ High Capacity Dual Hinged Metal Doors
- Available in 6", 8", 10", and 12" widths



4 R4PWF

- Rack Top Trough with Waterfall creates pathway above rack



5 NM2

- NetManager™ High Capacity Horizontal Cable Manager

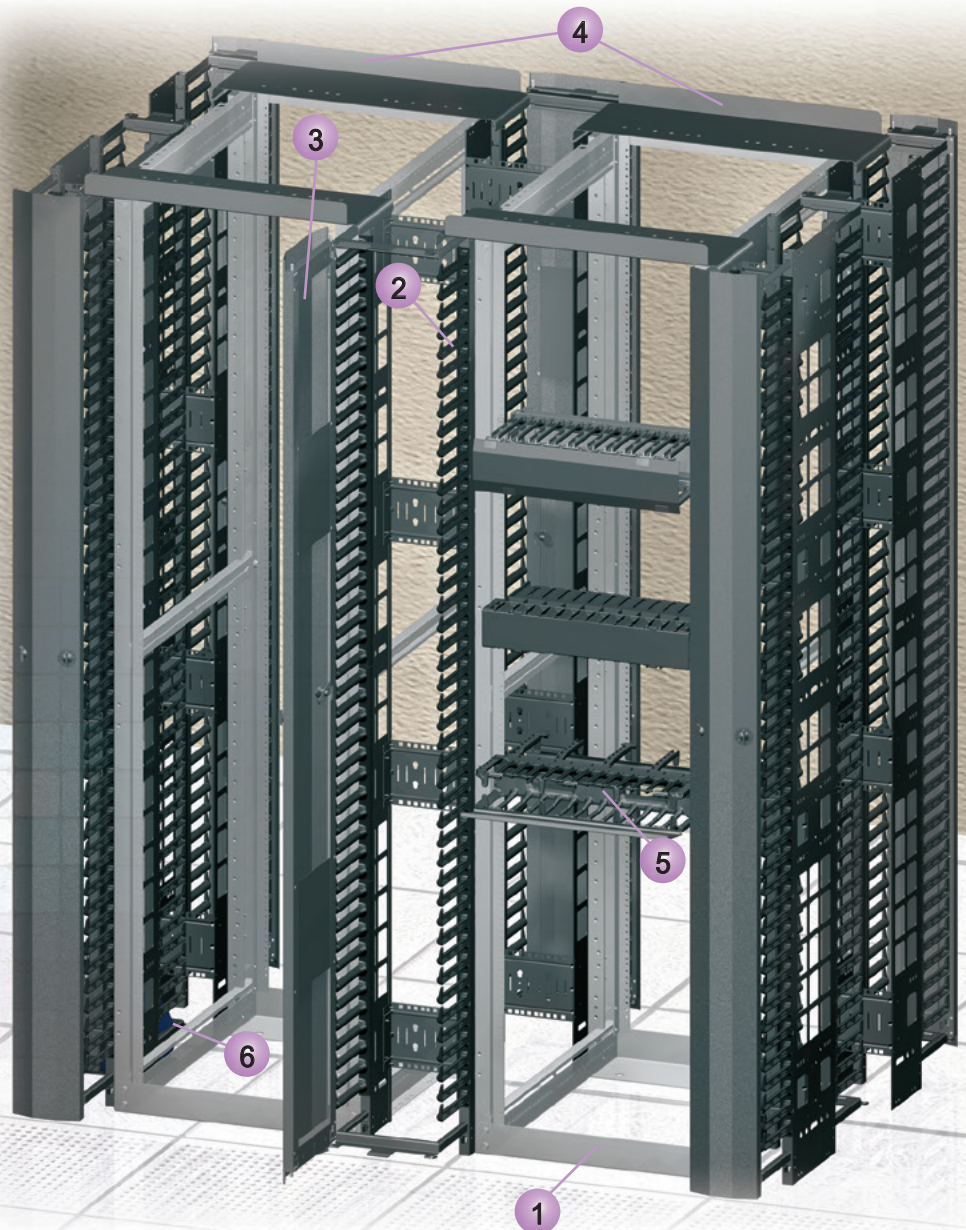


6 RFG6X8

- Cool Boot® Raised Floor Air Sealing Grommet



The capacity of this vertical manager is ideal for Category 6A cabling or other cabling systems. Integral EIA zero rack space mounting capability in the back of the manager allows equipment to be patched in the PatchRunner™ High Capacity Vertical Cable Manager, freeing up valuable rack space for equipment and allowing the use of shorter length patch cords.

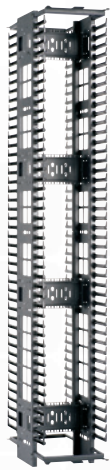


Representative offering only,
visit www.panduit.com/enterprisenetworks

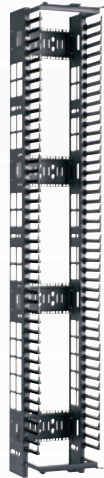
PatchRunner™ High Capacity Vertical Cable Managers

- High capacity minimizes area required for network layout, freeing up valuable floor space
- Allows vertical mounting of many standard EIA 19" accessories, such as patch panels
- Ventilated side walls provide maximum airflow for equipment cooling

- Snap-on finger sections can be removed to improve airflow, and break away fingers allow routing of large cable bundles
- Large finger spacing accommodates up to 48 Category 6A cables
- Optional sure close dual hinged metal doors provide easy access to vertical pathway and provide visual and audible feedback on closure



PEV



PEVF



PED



PEVEPB1



PEVBRC



SRB19D7BL

Part Number	Part Description	No. of Rack Spaces‡	Std. Pkg. Qty.
-------------	------------------	---------------------	----------------

High Capacity Dual Sided Vertical Managers

PEV6*	Dimensions: 83.5"H x 6.0"W x 28.1"D (2120mm x 152mm x 714mm)	45	1
PEV8*	Dimensions: 83.5"H x 8.0"W x 28.1"D (2120mm x 203mm x 714mm)	45	1
PEV10*	Dimensions: 83.5"H x 10.0"W x 28.1"D (2120mm x 254mm x 714mm)	45	1
PEV12*	Dimensions: 83.5"H x 12.0"W x 28.1"D (2120mm x 305mm x 714mm)	45	1

High Capacity Single Sided Vertical Managers

PEVF6*	Dimensions: 83.5"H x 6.0"W x 15.9"D (2120mm x 152mm x 404mm)	45	1
PEVF8*	Dimensions: 83.5"H x 8.0"W x 15.9"D (2120mm x 203mm x 404mm)	45	1
PEVF10*	Dimensions: 83.5"H x 10.0"W x 15.9"D (2120mm x 254mm x 404mm)	45	1
PEVF12*	Dimensions: 83.5"H x 12.0"W x 15.9"D (2120mm x 305mm x 404mm)	45	1

PatchRunner™ High Capacity Dual Hinged Metal Doors

PED6B1*	Dimensions: 82.8"H x 6.1"W x 1.7"D (2103mm x 155mm x 43mm)	45	1
PED8B1*	Dimensions: 82.8"H x 8.1"W x 1.7"D (2103mm x 206mm x 43mm)	45	1
PED10B1*	Dimensions: 82.8"H x 10.1"W x 1.7"D (2103mm x 256mm x 43mm)	45	1
PED12B1*	Dimensions: 82.8"H x 12.1"W x 1.7"D (2103mm x 307mm x 43mm)	45	1

Accessories

PEVEPB1	End Panel. Dimensions: 83.7"H x 23.2"W x 0.5"D (2125mm x 590mm x 12mm)	45	1
PEVBRC6	Horizontal cross brace bend radius control clips for PatchRunner™ High Capacity Vertical Cable Managers PEV6 and PEVF6.	45	1
PEVBRC8	Horizontal cross brace bend radius control clips for PatchRunner™ High Capacity Vertical Cable Managers PEV8 and PEVF8.	45	1
PEVBRC10	Horizontal cross brace bend radius control clips for PatchRunner™ High Capacity Vertical Cable Managers PEV10 and PEVF10.	45	1
PEVBRC12	Horizontal cross brace bend radius control clips for PatchRunner™ High Capacity Vertical Cable Managers PEV12 and PEVF12.	45	1
SRB19D7BL	Strain relief bar extends 7" off the rack; supports, manages, and provides proper bend radius protection. Ideal for use with Category 6A copper cabling installations.	45	1

*For part numbers that fit 8' rack, add "96" to end of part number. Overall height for managers is 95.5" (2426mm).

For 8' doors, add "96" before B1. For example: PED696B1.

Overall door height is 94.4" (2399mm).

‡One rack space = 1.75" (44.45mm).

All product color is black.

For PatchRunner™ High Capacity Vertical Cable Manager Specifications, see page 18.

NetRunner™ High Capacity Vertical Cable Management System

1 2 Post Rack

- R2P**
84.0"H x 20.3"W x 3.0"D
45 rack spaces
aluminum
- R2PW**
84.0"H x 24.3"W x 3.0"D
45 rack spaces



Provides cost effective solutions that organize, manage, protect and showcase network cabling while ensuring system performance and reliability. Optimal compatibility with Panduit racks, patch panels, and connectivity provides a complete end-to-end solution.

2 NRV12

- 12"W Front and Rear Vertical Manager – 45 rack spaces



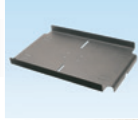
3 NRD12B1

- Dual Hinged Metal Door – 45 rack spaces



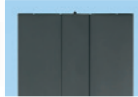
4 WMPV45ERTW

- Rack Top Trough with Waterfall creates pathway above rack



5 NREPB1

- End panel for NRV
NetRunner™ High Capacity
Vertical Cable Managers



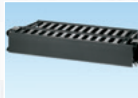
6 CMPH2

- 2 RU Open-Access™
Horizontal Cable Manager
D-rings



7 WMP1E

- 2 RU PatchLink™ Horizontal
Cable Manager



8 NM2

- NetManager™ High Capacity
Horizontal Cable Manager



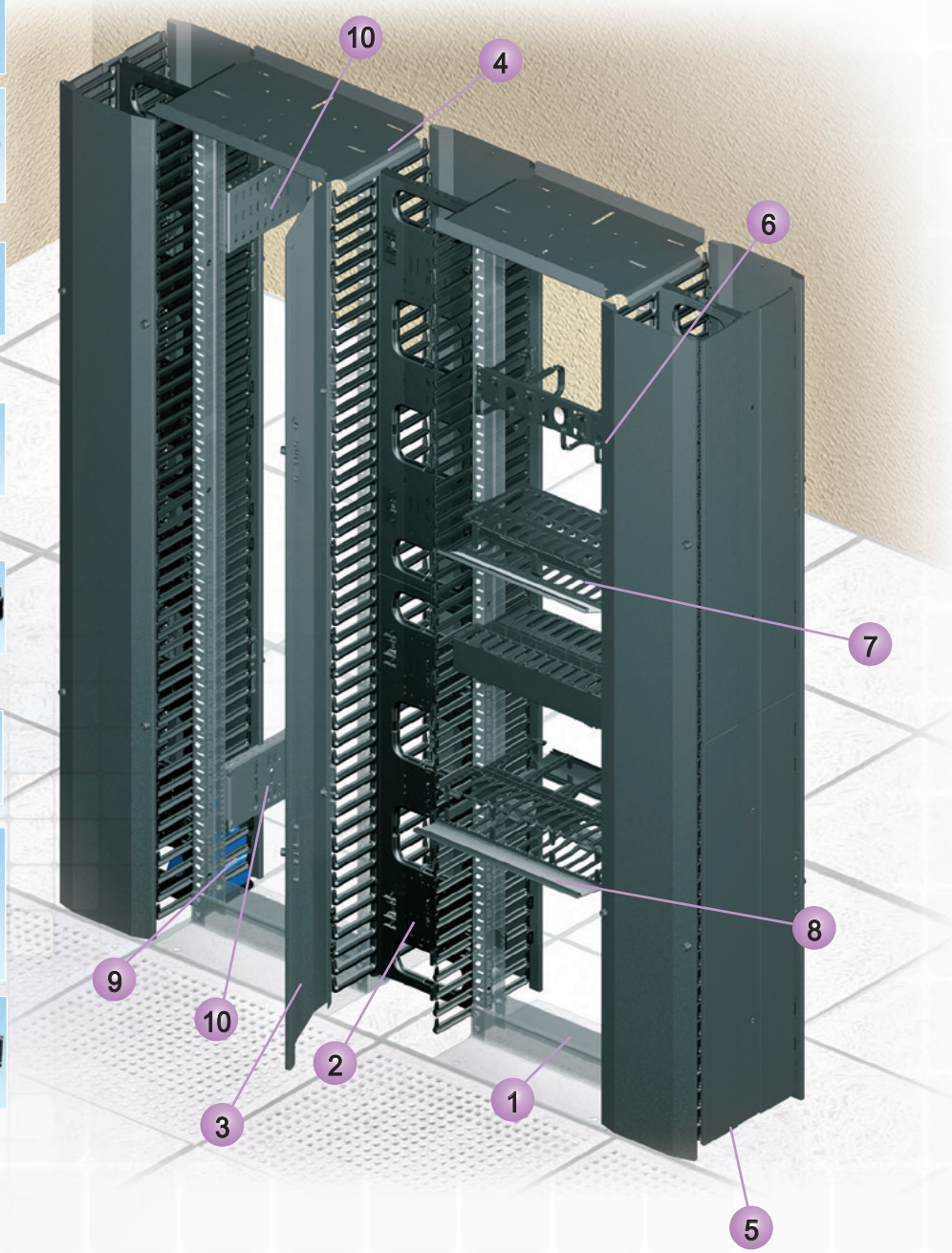
9 RFG6X8

- Cool Boot® Raised Floor Air
Sealing Grommet



10 R2PPDUB

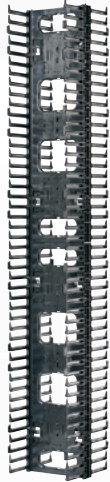
- Power Outlet Unit (POU)
bracket for 2 and 4 post racks



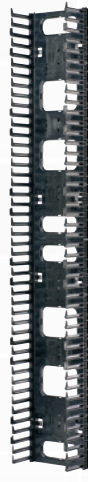
NetRunner™ High Capacity Vertical Cable Managers

- Large finger openings accommodate up to 24 Category 6A cables
- Push button dual hinged doors (ordered separately) can be opened 110° to the left or right to provide complete access to the cables inside the vertical pathway

- Integral cable retainer on ends of each finger contain cables within each rack unit
- Vertical managers include mounting brackets and #12-24 screws
- Dual-sided managers are for 2 post 3" channel racks and 4 post racks; use single-sided managers for 6" channel racks



NRV



NRVF



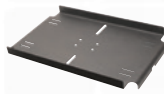
NRD



NREP1



NRVCB



WMPV45ERTW

Part Number	Part Description	No. of Rack Spaces‡	Std. Pkg. Qty.
-------------	------------------	---------------------	----------------

High Capacity Dual Sided Vertical Managers

NRV6	Dimensions: 80.4"H x 6.7"W x 13.8"D (2042mm x 170mm x 350mm)	45	1
NRV10	Dimensions: 80.4"H x 10.0"W x 13.8"D (2042mm x 254mm x 350mm)	45	1
NRV12	Dimensions: 80.4"H x 12.0"W x 13.8"D (2042mm x 305mm x 350mm)	45	1

High Capacity Single Sided Vertical Managers

NRVF6	Dimensions: 80.4"H x 6.7"W x 7.48"D (2042mm x 170mm x 190mm)	45	1
NRVF10	Dimensions: 80.4"H x 10.0"W x 7.48"D (2042mm x 254mm x 190mm)	45	1
NRVF12	Dimensions: 80.4"H x 12.0"W x 7.48"D (2042mm x 305mm x 190mm)	45	1

High Capacity Dual Hinged Metal Doors

NRD6B1	Dimensions: 82.8"H x 7.4"W x 1.6"D (2104mm x 188mm x 40mm)	45	1
NRD10B1	Dimensions: 82.8"H x 10.7"W x 1.6"D (2104mm x 272mm x 40mm)	45	1
NRD12B1	Dimensions: 82.8"H x 12.7"W x 1.6"D (2104mm x 322mm x 40mm)	45	1

Accessories

NRVCB	NetRunner™ High Capacity Center Mount Bracket Kit. For use with CEA-310-E standard 2 post and Panduit 4 Post Racks.	—	1
NREP1	End panel for use with NRV series, WMPVHCF45E / WMPVHC45E.	—	1
WMPV45ERTW	Rack top trough with waterfall door 2 post 3" channel rack.	—	1

‡One rack space = 1.75" (44.45mm).

All product color is black.

For NetRunner™ High Capacity Vertical Cable Manager Specifications, see page 19.

4 Post Cable Management Rack System

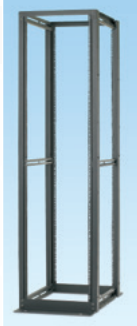
1 4 Post Rack

R4P36CN

Cage nut rails
84.0"H x 23.25"W x 36.0"D
45 rack spaces

R4P42CN

Cage nut rails
84.0"H x 23.25"W x 41.5"D
45 rack spaces



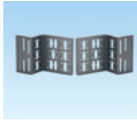
2 R4PFP

- Vertical Blanking Panel



3 CVPDUB

- Vertical POU
Mounting Brackets



4 CVPPB

- Vertical Patch Panel
Mounting Bracket



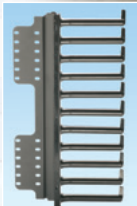
5 RCSTR

- Caster set

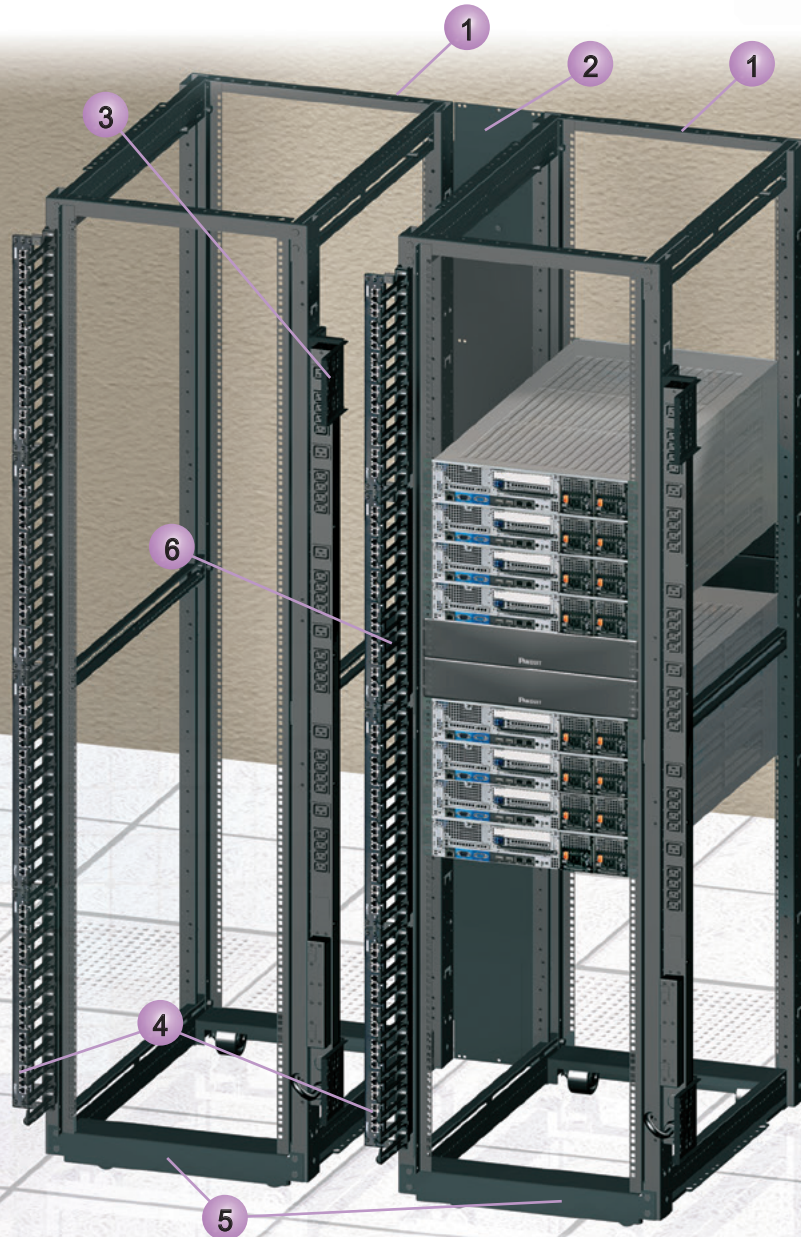


6 R4PFL

- Vertical finger section for
cable management



Deep 4 post open server racks provide the necessary environment for high density server applications. The open design assures maximum ventilation while minimizing air mixing in hot/cold aisle configurations. Space in the rear of the 4 post racks allows for server power, cable management and patching, providing an efficient and functional server solution.



4 Post Rack System configured for server application.

4 Post Cable Management Rack System and Accessories

- Offered in 23", 30", 36" and 42" depths
- Offered in 84" and 96" heights
- Fully adjustable rails can be adjusted after rack is secured to floor

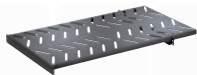
- Cage nut rails for server applications and tapped rails for switch applications
- 2,500 lbs. (1134 kg) load rating, UL Listed



R4P



R4PWF



RSHLF



CVPPB



CNSPE



CVPDUB



R4PFM

Part Number	Part Description	No. of Rack Spaces‡	Std. Pkg. Qty.
4 Post Rack Threaded Rail			
R4P23*	Dimensions: 84.0"H x 23.25"W x 23.0"D (2134mm x 591mm x 584mm).	45	1
R4P*	Dimensions: 84.0"H x 23.25"W x 30.0"D (2134mm x 591mm x 762mm).	45	1
R4P36*	Dimensions: 84.0"H x 23.25"W x 36.0"D (2134mm x 591mm x 914mm).	45	1
R4P42*	Dimensions: 84.0"H x 23.25"W x 41.5"D (2134mm x 591mm x 1054mm).	45	1
4 Post Rack Accessories			
R4PWF	Top trough with waterfall creates pathway above rack. Dimensions: 1.9"H x 26.1"W x 8.5"D (50mm x 662mm x 216mm).	—	1
RSHLF23	4 post rack mount shelf. Load rating 275 lbs.(124.7 kg). Dimensions: 1.7"H x 19.0"W x 23.0"D (44mm x 483mm x 584mm).	1	1
RSHLF	4 post rack mount shelf. Load rating 275 lbs. (124.7 kg). Dimensions: 1.7"H x 19.0"W x 30.0"D (44mm x 483mm x 762mm).	1	1
RSHLF36	4 post rack mount shelf. Load rating 275 lbs. (124.7 kg). Dimensions: 1.7"H x 19.0"W x 36.0"D (44mm x 483mm x 914mm).	1	1
R4PFP	Adjustable vertical filler panel for Panduit 4 Post Racks blocks by-pass air and directs cold airflow through equipment when used.	45	1
RCSTR	4 post rack casters.	—	1
CVPPB	Bracket to vertically mount 1 RU EIA 19" copper and fiber patch panels to the side of the Net-Access™ Cabinet posts or 4 post racks.	—	1
CNSPE	Net-Access™ Network Cabinet and 4 post rack end channel slack spools. Package includes one left and one right slack spool and mounting brackets.	—	1
CVPDUB	Bracket for vertical POU mounting to the side of the Net-Access™ Cabinet posts or 4 post racks (kit of two).	—	1
R4PFL	Left vertical finger section for cable management.	11	1
R4PFR	Right vertical finger section for cable management.	11	1
R4PFM	Finger managers for 7 and 8 foot Panduit 4 Post Racks.	—	1

*For 7' 4 Post Rack Cage Nut Rail add suffix CN to the end of the part number, for example, R4P23CN.
 NOTE: For 8' 4 Post Rack Threaded Rail, add suffix 96 to the end of the part number, for example, R4P2396. For 8' 4 Post Rack Cage Nut, add suffix CN96 to the end of the part number, for example, R4P23CN96.

‡One rack space = 1.75" (44.45mm).

All product color is black.

2 Post Rack System

- Offered in 84" (2134mm) and 96" (2441mm) versions for both the three inch deep channel rack and six inch deep channel rack
- Rack space identification is printed numbers up allowing quick and easy equipment installation and identification
- Fully bonded structure

- 3" (76mm) deep channel, 1000 lb. (454 kg) load rating, UL listed
- 6" (152mm) deep channel, 1500 lb. (680 kg) load rating, UL listed
- Perforated rails for cable access and side-to-side airflow switches [6" (152mm) depth only]



R2P

R2P6S



R2PPEVWF



R2PPDUB

Part Number	Part Description	No. of Rack Spaces‡	Std. Pkg. Qty.
-------------	------------------	---------------------	----------------

3" Deep Channel Rack

R2P	19" EIA rack, aluminum. Dimensions: 84.0"H x 20.3"W x 3.0"D (2134mm x 514mm x 76mm).	45	1
R2P96	19" EIA rack, aluminum. Dimensions: 96.0"H x 20.3"W x 3.0"D (2438mm x 514mm x 76mm).	52	1
R2PS	19" EIA rack, steel. Dimensions: 84.0"H x 20.3"W x 3.0"D (2134mm x 514mm x 76mm).	45	1
R2PW	23" EIA rack, aluminum. Dimensions: 84.0"H x 24.3"W x 3.0"D (2134mm x 616mm x 76mm).	45	1
R2P48	19" EIA rack, aluminum. Dimensions: 48.0"H x 20.3"W x 3.0"D (1219mm x 514mm x 76mm).	24	1

6" Deep Channel Rack

R2P6S	19" EIA rack, 6" channel, steel. Dimensions: 84.0"H x 20.3"W x 6"D (2134mm x 514mm x 152mm).	45	1
R2P6S96	19" EIA rack, 6" channel, steel. Dimensions: 96.0"H x 20.3"W x 6"D (2438mm x 514mm x 152mm).	52	1

Accessories

RFAKIT	Rack anchor kit for concrete floor (set of four).	—	1
R2PPDUB	Power Outlet Unit (POU) bracket for 2 and 4 post racks (set of two).	—	1
R2PPEVWF	Waterfall Trough for 2 Post Rack and PatchRunner™ High Capacity Vertical Cable Managers.	—	1
S1224-C	#12-24 x .5" mounting screws.	—	100

‡One rack space = 1.75" (44.45mm).
All product color is black.

High Capacity Horizontal Cable Management Systems



NetManager™ High Capacity Horizontal Cable Managers

- Innovative inset fingers slope inward toward back of managers offering unobstructed access to network cabling for easier moves, adds, and changes
- Large front finger openings easily accommodate Category 6A and Category 6 cables, speeding installation and reducing maintenance costs
- Rear cable management finger spacing utilizes open D-rings for greater accessibility
- Can be used to create large capacity horizontal pathways for routing cable
- Front and rear dual hinged cover allows cable access without removing cover
- Built in cable retainers hold cable in place for easy moves, adds, and changes



NM2



NMF2



NMF3



NMF4

Part Number	Part Description	No. of Rack Spaces‡	Cable Capacity				Std Pkg Qty.
			Cat. 6A (28AWG - 0.185")	Cat. 6A (24AWG - 0.275")	Cat. 6 (28AWG - 0.150")	Cat. 6 (24AWG - 0.235")	
19" Manager, Front and Rear							
NM1	1.7"H x 19.0"W x 13.1"D (44mm x 482mm x 332mm).	1	50/50	22/22	76/76	31/31	1
NM2	3.5"H x 19.0"W x 13.1"D (88mm x 482mm x 332mm).	2	142/142	64/64	216/216	88/88	1
NM3	5.2"H x 19.0"W x 13.1"D (133mm x 482mm x 332mm).	3	243/243	110/110	370/370	150/150	1
NM4	7.0"H x 19.0"W x 13.1"D (177mm x 482mm x 332mm).	4	355/355	160/160	540/540	220/220	1

19" Manager, Front Only

NMF1*	1.7"H x 19.0"W x 6.2"D (44mm x 482mm x 157mm).	1	50	22	76	31	1
NMF2*	3.5"H x 19.0"W x 6.2"D (88mm x 482mm x 157mm).	2	142	64	216	88	1
NMF3*	5.2"H x 19.0"W x 6.2"D (133mm x 482mm x 157mm).	3	243	110	370	150	1
NMF4*	7.0"H x 19.0"W x 6.2"D (177mm x 482mm x 157mm).	4	355	160	540	220	1

Part Number	Part Description	Std Pkg Qty.
-------------	------------------	--------------

Accessories

NM1B	Front to rear pass through blanking panel for NetManager™ High Capacity Horizontal Cable Managers, NM1 and NMF1.	1
NM2B	Front to rear pass through blanking panel for NetManager™ High Capacity Horizontal Cable Managers, NM2 and NMF2.	1
NM3B	Front to rear pass through blanking panel for NetManager™ High Capacity Horizontal Cable Managers, NM3 and NMF3.	1
NM4B	Front to rear pass through blanking panel for NetManager™ High Capacity Horizontal Cable Managers, NM4 and NMF4.	1

*Also available in white. Add "WH" to end of part number.
 Capacities are based on a fill ratio of 40% to accommodate proper cable routing techniques.
 ‡One rack space = 1.75" (44.45mm).
 All product color is black.

Horizontal Cable Management Systems

PatchLink™ Horizontal Cable Managers

- Dual-hinged cover allows cable access without removing cover
- Rounded edges on fingers protect cables from snags and damage to cable

- Flexible fingers allow easy installation and removal of cables
- Pass-through holes allow front to rear cabling
- Covers and #12-24 mounting screws included
- Bulk package options minimize packaging on-site

Part Number	Part Description	No. of Rack Spaces‡	Cable Capacity				Std Pkg Qty.
			Cat. 6A (28AWG - 0.185")	Cat. 6A (24AWG - 0.275")	Cat. 6 (28AWG - 0.150")	Cat. 6 (24AWG - 0.235")	

19" Manager, Front and Rear

Front/Rear							
WMPSE	1.7"H x 19.0"W x 8.9"D (44mm x 483mm x 226mm).	1	40/68	18/30	61/104	25/42	1
WMP1E	3.5"H x 19.0"W x 8.9"D (89mm x 483mm x 226mm).	2	101/134	45/60	153/204	62/83	1

19" Manager, Front Only

Front/Rear							
WMPFSE	1.7"H x 19.0"W x 3.7"D (44mm x 483mm x 94mm).	1	40	18	61	25	1
WMPF1E	3.5"H x 19.0"W x 3.7"D (89mm x 483mm x 94mm).	2	101	45	153	62	1

Capacities are based on a fill ratio of 40% to accommodate proper cable routing techniques.

‡One rack space = 1.75" (44.45mm).

All product color is black.



WMPSE



WMP1E



WMPFSE



WMPF1E

Open-Access™ Horizontal Cable Managers

- D-ring managers provide an open and efficient way to manage power, coaxial, and communications cables
- Optional snap-on cover

- Optional front and rear managers
- Pass-through holes allow front to rear cabling
- Hardware included

Part Number	Part Description	No. of Rack Spaces‡	Cable Capacity				Std Pkg Qty.
			Cat. 6A (28AWG - 0.185")	Cat. 6A (24AWG - 0.275")	Cat. 6 (28AWG - 0.150")	Cat. 6 (24AWG - 0.235")	

19" Manager, Front and Rear

Front/Rear							
CMPH1	1.7"H x 19.0"W x 8.6"D (44mm x 483mm x 218mm).	1	32/43	14/19	49/65	20/26	1
CMPH2	3.5"H x 19.0"W x 8.6"D (88mm x 483mm x 218mm).	2	87/161	39/73	133/245	54/100	1

19" Manager, Front Only

Front/Rear							
CMPHF1	1.7"H x 19.0"W x 3.4"D (44mm x 483mm x 87mm).	1	32	14	49	20	1
CMPHHF1	1.7"H x 19.0"W x 5.7"D (44mm x 483mm x 144mm).	1	43	19	65	26	1
CMPHF2	3.5"H x 19.0"W x 3.4"D (88mm x 483mm x 87mm).	2	87	39	133	54	1
CMPHH2	3.5"H x 19.0"W x 5.7"D (88mm x 483mm x 144mm).	2	161	73	245	100	1

Capacities are based on a fill ratio of 40% to accommodate proper cable routing techniques.

‡One rack space = 1.75" (44.45mm).

All product color is black.



CMPHF1



CMPHHF1



CMPHF2

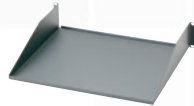


CMPHH2

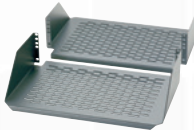
Horizontal Cable Management Systems

Rack Mount Shelves for 2 Post Racks

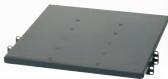
- Load ratings up to 250 lbs.; refer to part descriptions for specific load ratings



SRM19FM2



SRM19CMV3



SRM19X18A1

Part Number	Part Description	No. of Rack Spaces‡	Std. Pkg. Qty.
SRM19FM1	19" front mount shelf, steel. Dimensions: 1.7"H x 19.0"W x 15.2"D (44mm x 483mm x 385mm). Load rating 30 lbs. (13.6 kg).	1	1
SRM19FM2	19" front mount shelf, steel. Dimensions: 3.5"H x 19.0"W x 15.2"D (88mm x 483mm x 385mm). Load rating 50 lbs. (22.7 kg).	2	1
SRM19CMV3	19" cantilevered shelf, vented aluminum. Includes two-piece shelf that mounts to front and back of EIA racks. Dimensions: 5.2"H x 19.2"W x 12.5"D (133mm x 489mm x 316mm). Load rating 200 lbs. (90.9 kg).	3	1
SRM19CM3	19" cantilevered shelf, aluminum. Includes two-piece shelf that mounts to front and back of EIA racks. Dimensions: 5.2"H x 19.2"W x 12.5"D (133mm x 489mm x 316mm). Load rating 200 lbs. (90.9 kg).	3	1
SRM19X18A1	19" adjustable mount shelf, steel, mounts to front and back of EIA racks. Dimensions: 1.8"H x 19.0"W x 18.0"D (44mm x 483mm x 457mm). Load rating 250 lbs. (113.6 kg).	1	1
SRM19X25A1	19" adjustable mount shelf, steel, mounts to front and back of EIA racks. Dimensions: 1.8"H x 19.0"W x 25.0"D (44mm x 483mm x 635mm). Load rating 250 lbs. (113.6 kg).	1	1

‡One rack space = 1.75" (44.45mm).
All product color is black.

Tool-Less Blanking Panels

- Minimize bypass airflow in racks and cabinets while providing an aesthetic appearance



TLBP1



TLBP2

Part Number	Part Description	No. of Rack Spaces‡	Std. Pkg. Qty.
TLBP1S-V	19" (483mm) width for 3/8" cage nut holes.	1	5
TLBP2S-V	19" (483mm) width for 3/8" cage nut holes.	2	5
TLBP1R-V	19" (483mm) width for tapped rails.	1	5
TLBP2R-V	19" (483mm) width for tapped rails.	2	5

‡One rack space = 1.75" (44.45mm).
All product color is black.

PatchRunner™ High Capacity Vertical Cable Manager

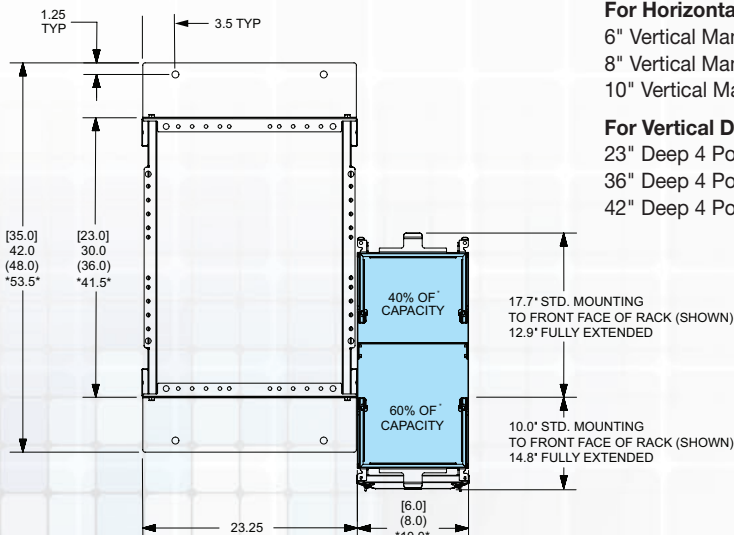
Specifications

- Dual-sided cable managers, having 60% of total cable capacity on one side and 40% on the other, allow optimized capacity placement on either side of the rack
- Cable managers have multiple mounting locations to the side of the rack, allowing optimal cable routing and space utilization
- When using a dual-sided cable manager in an inter-connect network architecture, the 60% side of the cable manager can be orientated towards the patching side of the rack to manage a higher number of patch cords
- When using a dual-sided cable manager in a cross-connect network architecture, the 60% side of the cable manager can be orientated towards the cabling side of the rack to manage a higher number of cables

Part Number	Larger Channel (60% Capacity)					Smaller Channel (40% Capacity)					RU Capacity	
	Channel Area (in.2)	Cat. 6A (28AWG - 0.185")	Cat. 6A (24AWG - 0.275")	Cat. 6 (28AWG - 0.150")	Cat. 6 (24AWG - 0.235")	Channel Area (in.2)	Cat. 6A (28AWG - 0.185")	Cat. 6A (24AWG - 0.275")	Cat. 6 (28AWG - 0.150")	Cat. 6 (24AWG - 0.235")	Total	
PEV6 (dual-sided) PEVF6 (single-sided)	64.8	964	436	1466	597	46.2	687	311	1045	426	3 rows of 2 RU	9
PEV8 (dual-sided) PEVF8 (single-sided)	93	1383	626	2105	857	65	967	437	1471	599	3 rows of 3 RU	9
PEV10 (dual-sided) PEVF10 (single-sided)	121	1800	814	2738	1115	83.4	1241	561	1887	769	3 rows of 4 RU	12
PEV12 (dual-sided) PEVF12 (single-sided)	147	2187	989	3327	1355	102	1517	686	2308	940	3 rows of 6 RU (6 with limited depth)	12/18
Single PEV Finger	5.7	106	47	161	65	—	—	—	—	—	—	—

*Capacities are based on a fill ratio of 40% to accommodate proper cable routing techniques. All dimensions represent typical outer cable diameter in inches (mm).

4 Post Rack



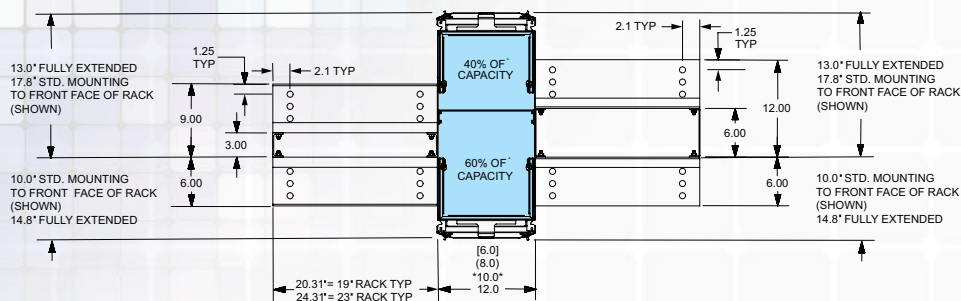
For Horizontal Dimensions:

- 6" Vertical Manager dimensions shown in brackets [...]
- 8" Vertical Manager dimensions shown in parenthesis (...)
- 10" Vertical Manager dimensions shown in Asterisk*...*

For Vertical Dimensions:

- 23" Deep 4 Post Rack dimensions shown in brackets [...]
- 36" Deep 4 Post Rack dimensions shown in parenthesis (...)
- 42" Deep 4 Post Rack dimensions shown in Asterisk*...*

2 Post Rack



Representative offering only, visit www.panduit.com/enterprisenetworks

NetRunner™ High Capacity Vertical Cable Manager

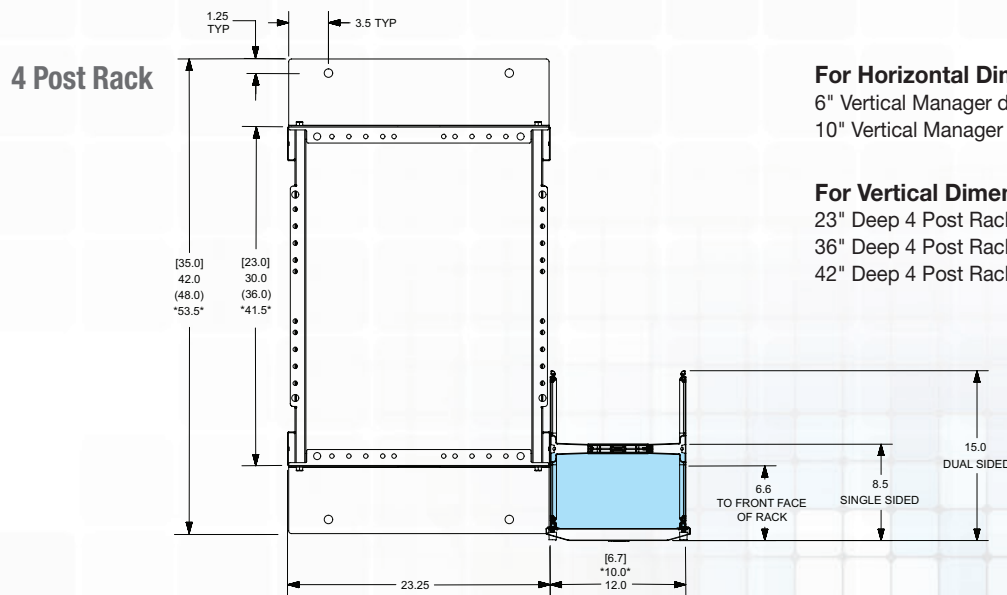
Specifications

• NetRunner™ High Capacity Vertical Cable Managers are specifically designed for cable capacities typically found in telecommunication rooms using medium to large enterprise switches

• Optional strain relief bars can be mounted vertically inside the cable managers to create distinct pathways to better manage multiple types of network media

Capacity Chart	Front Channel with Spool				Front Channel with No Spool				Rear Channel						
	Channel Area (in ²)	Cat. 6A (28AWG - 0.185")	Cat. 6A (24AWG - 0.275")	Cat. 6 (28AWG - 0.150")	Cat. 6 (24AWG - 0.235")	Channel Area (in ²)	Cat. 6A (28AWG - 0.185")	Cat. 6A (24AWG - 0.275")	Cat. 6 (28AWG - 0.150")	Cat. 6 (24AWG - 0.235")	Channel Area (in ²)	Cat. 6A (28AWG - 0.185")	Cat. 6A (24AWG - 0.275")	Cat. 6 (28AWG - 0.150")	Cat. 6 (24AWG - 0.235")
NRV6 (dual sided) NRVF6 (single sided)	23.3	346	156	527	214	32.9	489	221	744	303	32.9	489	221	744	303
NRV10 (dual sided) NRVF10 (single sided)	42.8	636	288	968	394	52.4	779	352	1186	483	52.4	779	352	1186	483
NRV12 (dual sided) NRVF12 (single sided)	54.6	812	367	1235	503	64.2	955	432	1453	592	64.2	955	432	1453	592
Single NRV Finger	4.75	88	39	134	54	—	—	—	—	—	—	—	—	—	—

*Capacities are based on a fill ratio of 40% to accommodate proper cable routing techniques. All dimensions represent typical outer cable diameter in inches (mm).



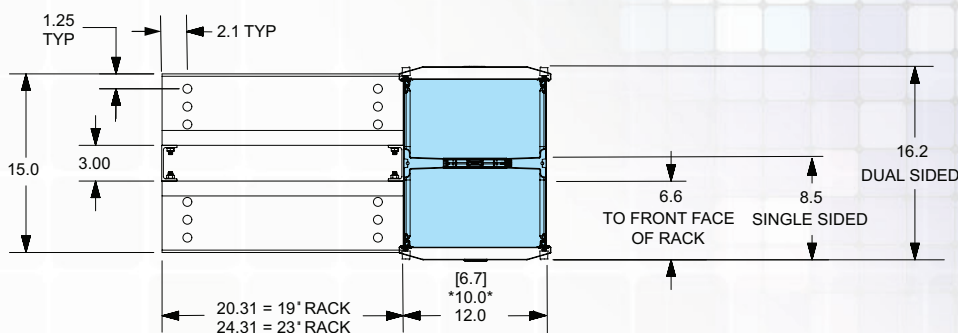
For Horizontal Dimensions:

6" Vertical Manager dimensions shown in brackets [...]
10" Vertical Manager dimensions shown in Asterisk*...*

For Vertical Dimensions:

23" Deep 4 Post Rack dimensions shown in brackets [...]
36" Deep 4 Post Rack dimensions shown in parenthesis (...)
42" Deep 4 Post Rack dimensions shown in asterisk*...*

2 Post Rack





PANDUIT®

Panduit Corp.
World Headquarters
Tinley Park, IL 60487

cs@panduit.com

US and Canada: 800.777.3300

Europe, Middle East, and Africa:

44.20.8601.7200

Latin America: 52.33.3777.6000

Asia Pacific: 65.6305.7575

www.panduit.com