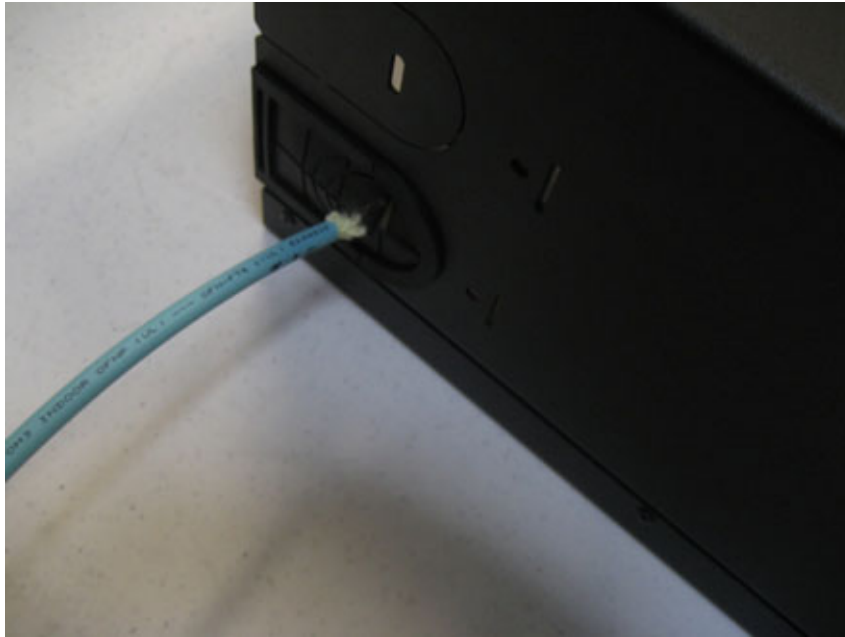


Note: FCX-12-10KIT/N shown. FC9-12-10KIT/N and FC9-4-3AKIT/N are similar for SC and APC connectors.

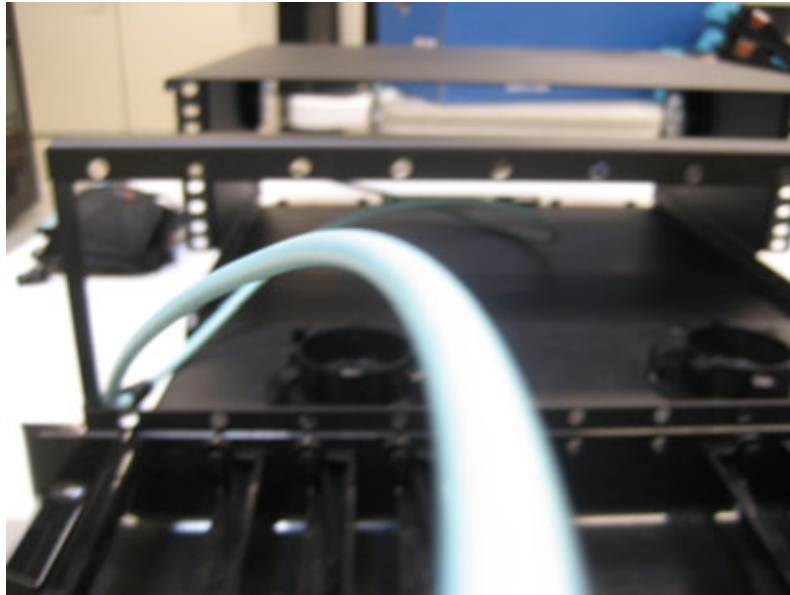
Enclosure Preparation

Cable needs to be fed through enclosure before terminating the cable into the cassette.

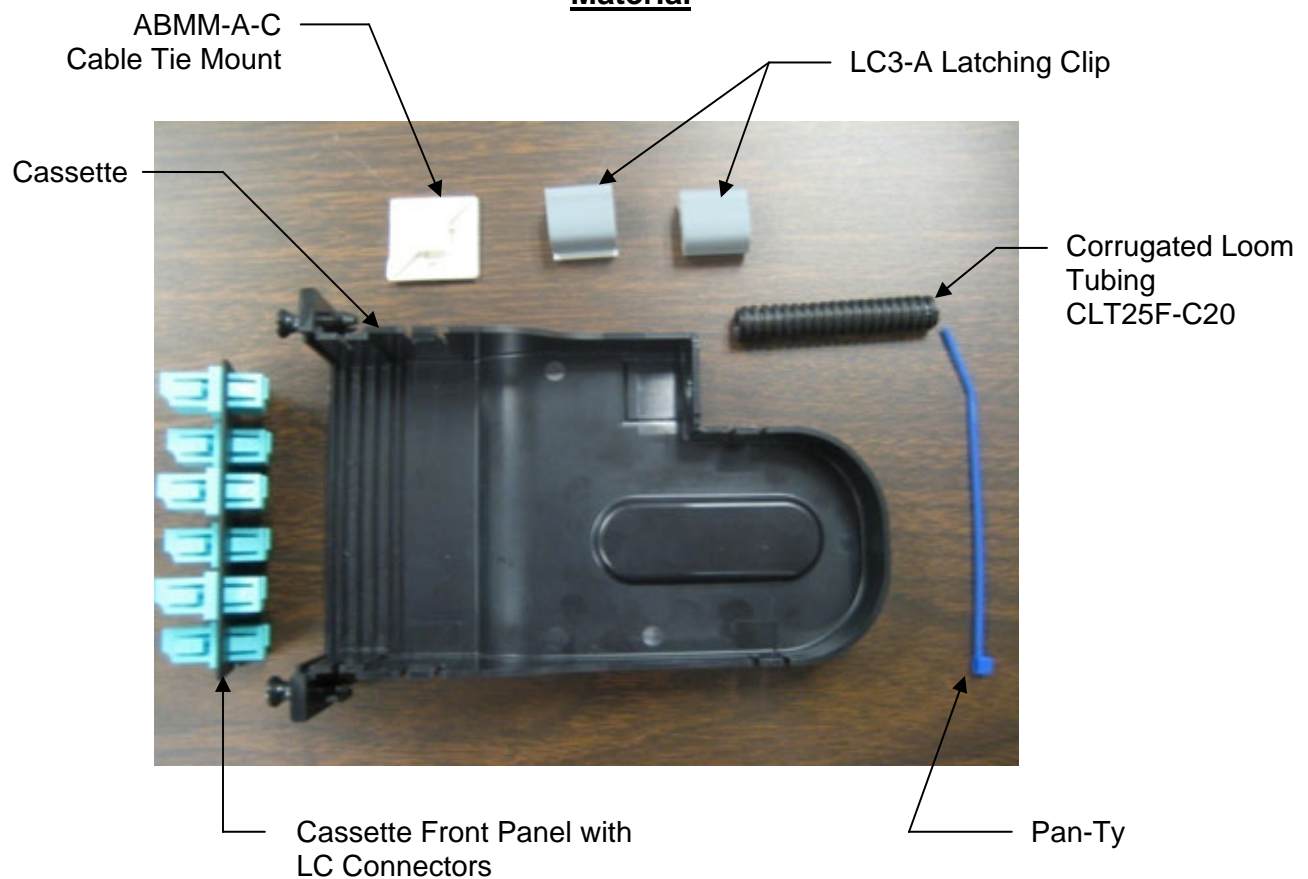
1. End of cable is slid through grommet on enclosure.



2. It is recommended that 1622 mm [60.5 in.] of cable be fed through the grommet on the enclosure. (1000 mm [39.4 in.] of cable for spooling in the enclosure and 622 mm [24.5 in.] of cable stored in the cassette).



Material



Cassette Preparation

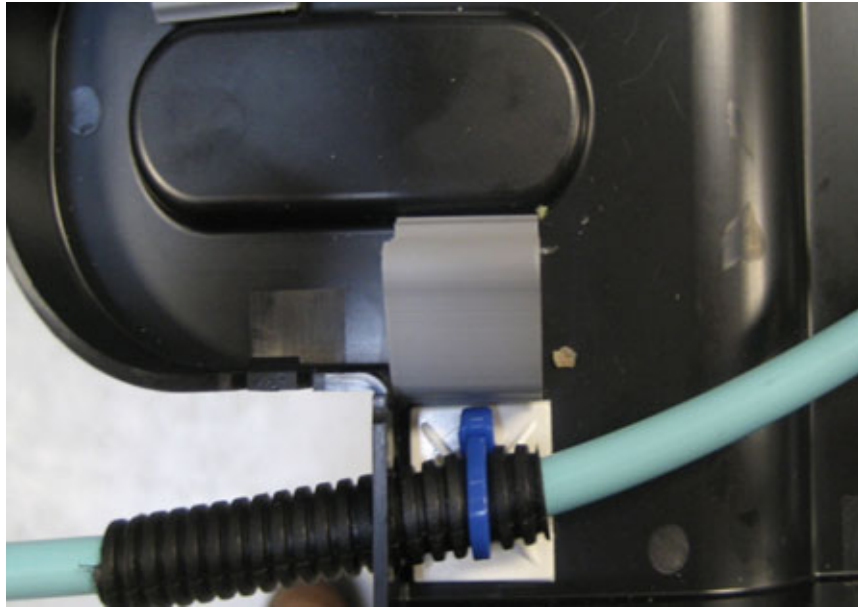
1. Install cable tie mount into cassette framing just inside the cable port on the rear of the cassette as shown.



2. Insert Feed 1000mm [39.4 in.] of fiber cable through corrugated loom tubing and slide through the cable port at the rear of the cassette.



3. Secure corrugated tube and cable loosely to the anchor installed in Step 1 using small Pan-Ty. The fiber cable should be able to be pulled through for terminating the fiber ends.



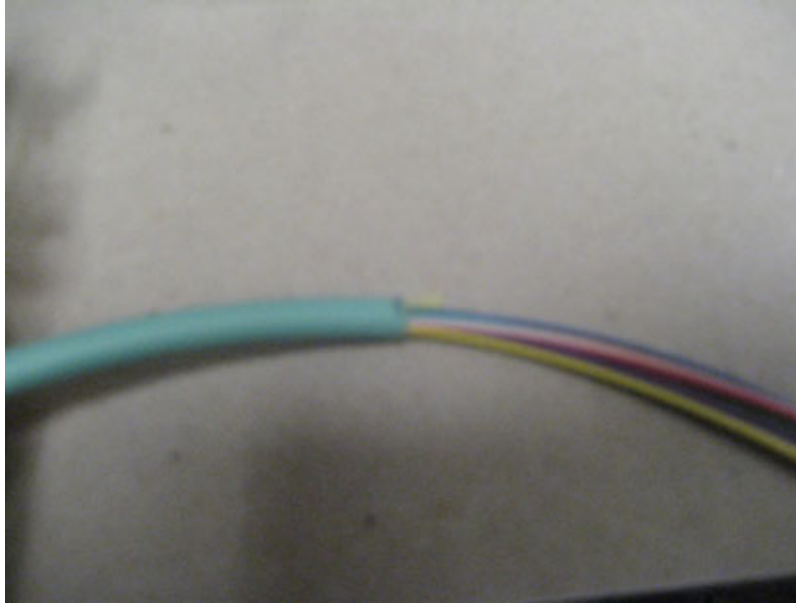
4. Install cable latch clips in the center of the cassette as shown.



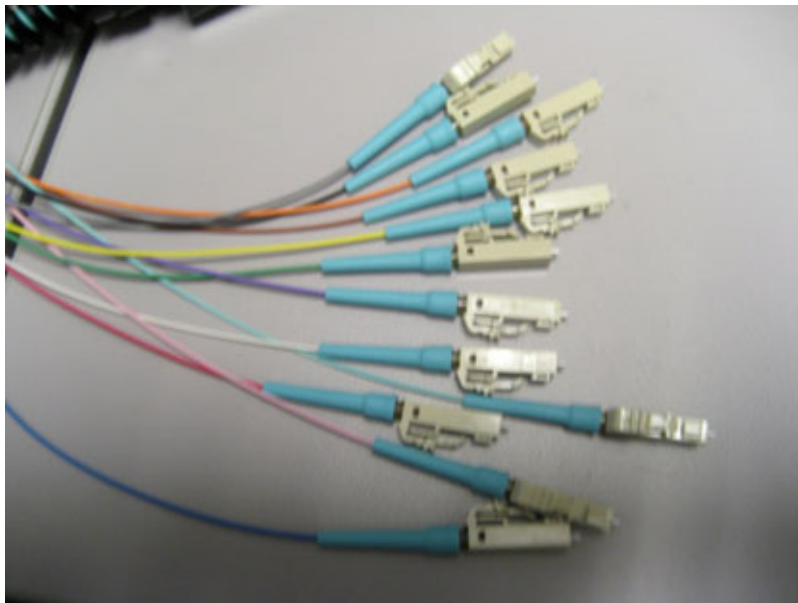
Fiber Cable Preparation

After the cable is installed and secure in the cassette:

1. Pull the fiber cable through the end of the corrugated loom tubing. Mark fiber cable at 622 mm [24.5 in.] from cut end of cable. Pull off cable jacketing and cut back Kevlar flush with the end of the jacketing so only 900um fiber is exposed for the 622 mm [24.5 in.] length.



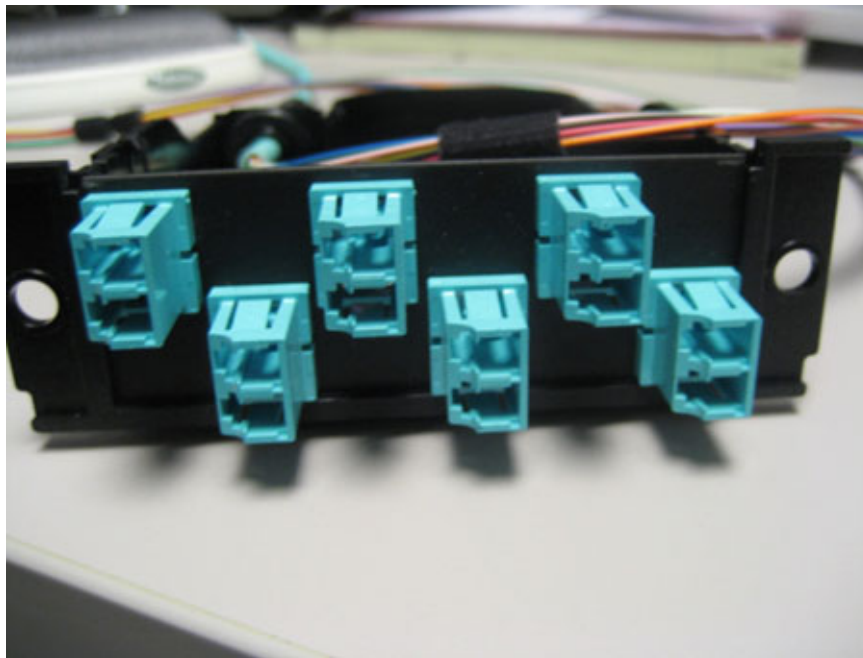
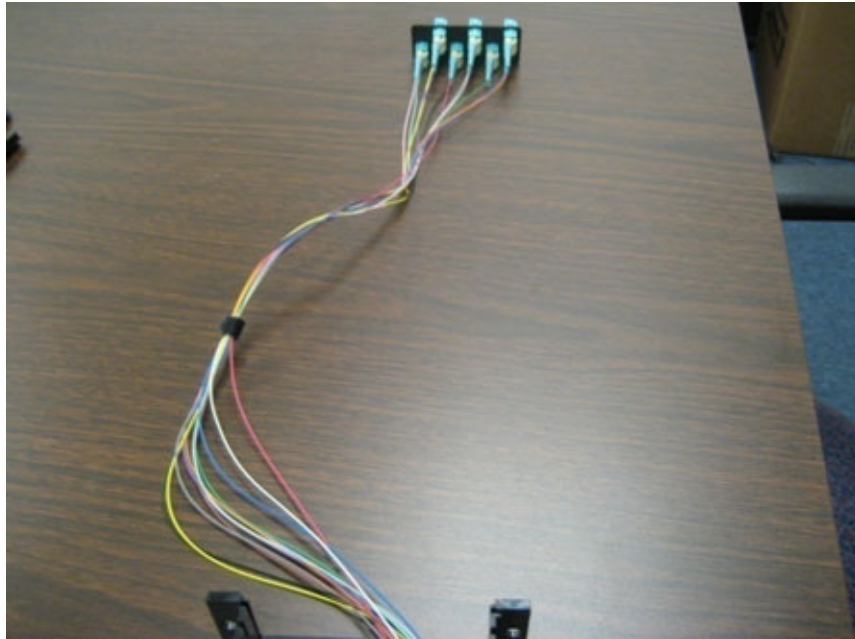
2. Follow installation instructions per PN340* LC Fiber Optic Connector Field Polish Termination Instructions.



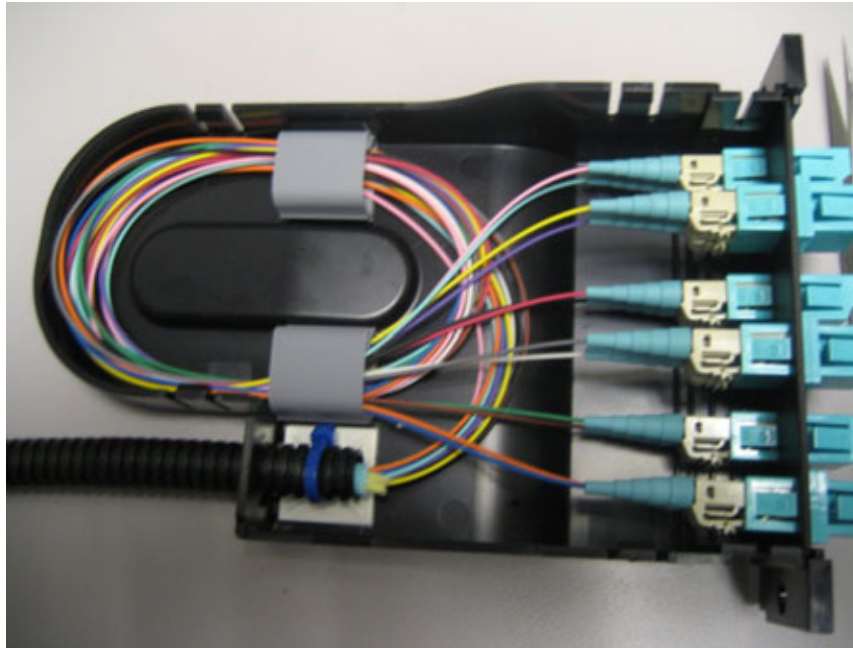
* Denotes instruction sheet revision letter.

Cable Routing

1. Install polished LC connectors into the adapter within the cassette module. Be sure to follow TIA/EIA color code standards.



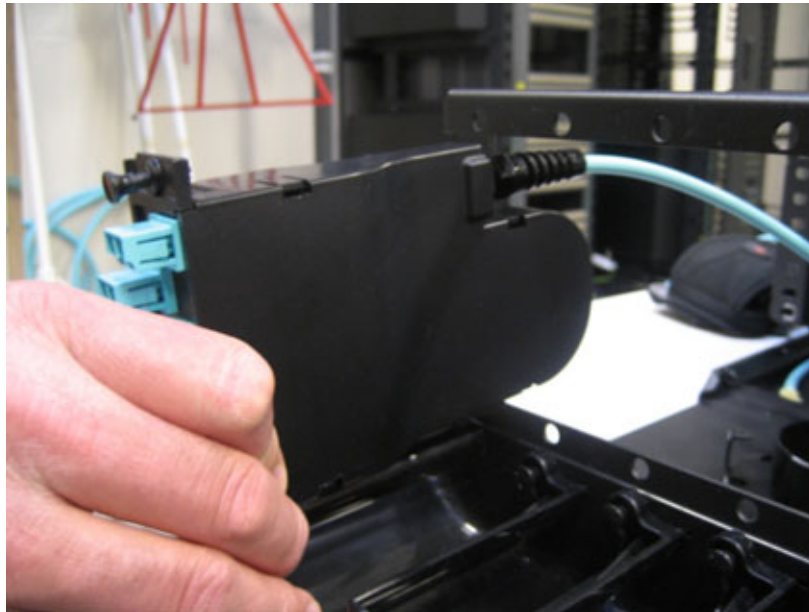
2. Once the adapters are installed, slide the fiber cable back through the corrugated loom tubing. Tightly secure the tubing and fiber cable as shown.
3. Dress fiber into cassette under the cable slack management clips as shown. Install the fiber adapter panel into the cassette.



4. Install cover onto cassette ensuring not to pinch any of the 900µm buffer cabling.

Installing Cassette into Enclosure

1. Pull loom tubing / fiber cable slack back into enclosure and slide cassette into on enclosure housing.



2. Snap enclosure into place.



3. Route slack as per instructions for enclosure being utilized.

**For Instructions in Local Languages
and Technical Support:**

www.panduit.com/resources/install_maintain.asp

PANDUIT

www.panduit.com

E-mail:
cs@panduit.com

Fax:
(708) 444-6993