

### 12x4 FiberRunner® QuikLock™ Coupler

- Pre-assembled to provide fast mechanical assembly of components
- No tools required for installation; bolts loosen for component disassembly



Part Number	Part Description	Std. Pkg. Qty.	Std. Ctn. Qty.
<b>FRBC12X4YL</b>	Pre-assembled coupler quickly joins two sections of channel and/or fittings. Mechanically attaches without tightening bolts. Bolts release using 3/8" nut driver to allow coupler to be removed if necessary.	1	5

For a bulk package of 10 couplers, order FRBC12X4YL-X.  
For other colors replace suffix YL (Yellow) with OR (Orange) or BL (Black).

### 12x4 FiberRunner® System Fittings

- Minimum 2" (50.8mm) bend radius control fittings
- Optional split covers snap onto each fitting
- Protect against signal loss and performance degradation
- Covers feature 3/4" (19mm) gap to allow cable to be laid in
- Assemble using FRBC QuikLock™ Couplers



FRR12X4



FRRASC12



FRH4512X4



FRH45SC12

Part Number	Part Description	Couplers Required	Std. Pkg. Qty.	Std. Ctn. Qty.
-------------	------------------	-------------------	----------------	----------------

#### 12x4 Horizontal Right Angle Fitting

<b>FRR12X4YL</b>	Attaches to 12x4 channel and/or fitting to create a 90° horizontal turn from a straight horizontal run. Inside divider walls manage cables routed around horizontal right angles. Accepts optional split cover FRRASC12YL.	(2 pcs.) FRBC12X4YL	1	—
------------------	--	------------------------	---	---

#### Split Cover for 12x4 Horizontal Right Angle Fitting

<b>FRRASC12YL</b>	Optional split cover for the horizontal right angle fitting FRR12X4YL. Snap-on feature allows cover to be installed and removed with no tools required. Creates radiused 3/4" (19mm) opening for easy access to add or remove cables.	—	1	5
-------------------	---	---	---	---

#### 12x4 Horizontal 45° Angle Fitting

<b>FRH4512X4YL</b>	Attaches to 12x4 channel and/or fitting to create a 45° horizontal turn from a straight horizontal run. Accepts optional split cover FRH45SC12YL.	(2 pcs.) FRBC12X4YL	1	—
--------------------	---	------------------------	---	---

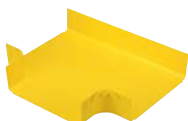
#### Split Cover for 12x4 Horizontal 45° Angle Fitting

<b>FRH45SC12YL</b>	Optional split cover for the horizontal 45° angle fitting FRH4512X4YL. Snap-on feature allows cover to be installed and removed with no tools required. Creates radiused 3/4" (19mm) opening for easy access to add or removes cables.	—	1	5
--------------------	--	---	---	---

For other colors replace suffix YL (Yellow) with OR (Orange) or BL (Black).

Table continues on next page

### 12x4 FiberRunner® System Fittings (continued)



FRT12X4



FRTSC12



FRT12X4W6



FRTSC12W6



FRFWC12X4



FRFWCSC12



FRFWC12X4W6



FRFWCSC12W6

Part Number	Part Description	Couplers Required	Std. Pkg. Qty.	Std. Ctn. Qty.
-------------	------------------	----------------------	----------------------	----------------------

#### 12x4 Horizontal Tee Fitting

<b>FRT12X4YL</b>	Attaches to 12x4 channel and/or fittings to create a 90° horizontal branch with a 12x4 exit from straight horizontal run. Accepts optional split cover FRTSC12YL.	(3 pcs.) FRBC12X4YL	1	—
------------------	---	------------------------	---	---

#### Split Cover for 12x4 Horizontal Tee Fitting

<b>FRTSC12YL</b>	Optional split cover for the horizontal tee fitting FRT12X4YL. Snap-on feature allows cover to be installed and removed with no tools required. Creates radiused 3/4" (19mm) opening for easy access to add or remove cables.	—	1	5
------------------	---	---	---	---

#### 12x4 Horizontal Tee with 6x4 Exit

<b>FRT12X4W6YL</b>	Attaches to 12x4 channel and/or fittings to create a 90° horizontal branch with a 6x4 exit from straight horizontal run. Accepts optional split cover FRTSC12W6YL.	(2 pcs.) FRBC12X4YL (1 pc.) FRBC6X4YL	1	—
--------------------	--	--	---	---

#### Split Cover for 12x4 Horizontal Tee with 6x4 Exit

<b>FRTSC12W6YL</b>	Optional split cover for the horizontal tee with 6x4 exit fitting FRT12X4W6YL. Snap-on feature allows cover to be installed and removed without tools. Creates radiused 3/4" (19mm) opening for easy access to add or remove cables.	—	1	5
--------------------	--	---	---	---

#### 12x4 Four Way Cross Fitting

<b>FRFWC12X4YL</b>	Attaches to 12x4 channel and/or fittings to create a horizontal four way cross intersection with two 12x4 exits. Accepts optional split cover FRFWCSC12YL.	(4 pcs.) FRBC12X4YL	1	—
--------------------	--	------------------------	---	---

#### Split Cover for 12x4 Four Way Cross Fitting

<b>FRFWCSC12YL</b>	Optional split cover for the four way cross fitting FRFWC12X4YL. Snap-on feature allows cover to be installed and removed with no tools required. Creates radiused 3/4" (19mm) opening for easy access to add or remove cables.	—	1	5
--------------------	---	---	---	---

#### 12x4 Four Way Cross Fitting with 6x4 Exits

<b>FRFWC12X4W6YL</b>	Attaches to 12x4 channel and/or fittings to create a horizontal four way cross intersection with two 6x4 exits. Accepts optional split cover FRFWCSC12W6YL.	(2 pcs.) FRBC12X4YL (2 pcs.) FRBC6X4YL	1	—
----------------------	---	---	---	---

#### Split Cover for 12x4 Four Way Cross Fitting with 6x4 Exits

<b>FRFWCSC12W6YL</b>	Optional split cover for the four way cross fitting FRFWC12X4W6YL. Snap-on feature allows cover to be installed and removed with no tools required. Creates radiused 3/4" (19mm) opening for easy access to add or remove cables.	—	1	5
----------------------	---	---	---	---

For other colors replace suffix YL (Yellow) with OR (Orange) or BL (Black).

### 12x4 FiberRunner® System Fittings (continued)



FREC12X4



FRIV4512X4



FROV4512X4



FROV45SC12



FROVRA12X4



FROVRASC12



FRRF126



FRRF126SC

Part Number	Part Description	Couplers Required	Std. Pkg. Qty.	Std. Ctn. Qty.
<b>12x4 End Cap Fitting</b>				
<b>FREC12X4YL</b>	Used for closing off open ends of the channel or fittings. No coupler required. Push-on installation.	—	1	5
<b>12x4 Inside Vertical 45° Angle Fitting</b>				
<b>FRIV4512X4YL</b>	Attaches to 12x4 channel and/or fitting to create a 45° upward angle from a straight horizontal run. Used with outside vertical 45° angle fitting FROV4512X4YL to change level of a straight horizontal run. Includes split cover.	(2 pcs.) FRBC12X4YL	1	—
<b>12x4 Outside Vertical 45° Angle Fitting</b>				
<b>FROV4512X4YL</b>	Attaches to 12x4 channel and/or fitting to create a 45° downward angle from a straight horizontal run. Used with inside vertical 45° angle fitting FRIV4512X4YL to change level of a horizontal run. Accepts optional split cover FROV45SC12YL.	(2 pcs.) FRBC12X4YL	1	—
<b>Split Cover for 12x4 Outside Vertical 45° Angle Fitting</b>				
<b>FROV45SC12YL</b>	Optional split cover for the outside vertical 45° angle fitting FROV4512X4YL. Snap-on feature allows cover to be installed and removed with no tools required. Creates radiused 3/4" (19mm) opening for easy access to add or remove cables.	—	1	5
<b>12x4 Outside Vertical Right Angle Fitting</b>				
<b>FROVRA12X4YL</b>	Attaches to 12x4 channel and/or fittings to create a 90° vertical turn down from a straight horizontal run. Accepts optional split cover FROVRASC12YL.	(2 pcs.) FRBC12X4YL	1	—
<b>Split Cover for 12x4 Outside Vertical Right Angle Fitting</b>				
<b>FROVRASC12YL</b>	Optional split cover for the outside vertical right angle fitting FROVRA12X4YL. Snap-on feature allows cover to be installed and removed with no tools required. Creates radiused 3/4" (19mm) opening for easy access to add or remove cables.	—	1	5
<b>12x4 to 6x4 FiberRunner® Reducer Fitting</b>				
<b>FRRF126YL</b>	Attaches any 12x4 FiberRunner® Fitting or Channel to any 6x4 FiberRunner® Fitting or Channel. Accepts split cover FRRF126SCYL.	(1 pc.) FRBC12X4YL (1 pc.) FRBC6X4YL	1	—
<b>Split Cover for 12x4 to 6x4 FiberRunner® Reducer Fitting</b>				
<b>FRRF126SCYL</b>	Optional split cover for the reducer fitting FRRF126YL. Snap-on feature allows cover to be installed and removed with no tools required. Creates radiused 3/4" (19mm) opening for easy access to add or remove cables.	—	1	5

For other colors replace suffix YL (Yellow) with OR (Orange) or BL (Black).

Table continues on next page

### 12x4 FiberRunner® System Fittings (continued)



FRY126



FRY126SC



FRRF126R



FRRF126RSC



FRRF126L



FRRF126LSC

Part Number	Part Description	Couplers Required	Std. Pkg. Qty.	Std. Ctn. Qty.
-------------	------------------	----------------------	----------------------	----------------------

#### Y-Reducer from 12x4 to Two 6x4 Exits

<b>FRY126YL</b>	Attaches any 12x4 FiberRunner® Fitting or Channel to two 6x4 FiberRunner® Channels. Accepts split cover FRY126SCYL.	(1 pc.) FRBC12X4YL (2 pcs.) FRBC6X4YL	1	—
-----------------	---	--	---	---

#### Split Cover for Y-Reducer from 12x4 to Two 6x4 Exits

<b>FRY126SCYL</b>	Optional split cover for the Y-reducer fitting FRY126YL. Snap-on feature allows cover to be installed and removed with no tools required. Creates radiused 11/16" (17.5mm) opening for easy access to add or remove cables.	—	1	5
-------------------	---	---	---	---

#### 12x4 to 6x4 Transition Right Reducer Fitting

<b>FRRF126RYL</b>	Attaches any 12x4 FiberRunner® Fitting or Channel to any 6x4 FiberRunner® Fitting or Channel while transitioning to the right. Accepts split cover FRRF126RSCYL.	(1 pc.) FRBC12X4YL (1 pc.) FRBC6X4YL	1	—
-------------------	--	---	---	---

#### Split Cover for 12x4 to 6x4 Transition Right Reducer Fitting

<b>FRRF126RSCYL</b>	Optional split cover for the transition right reducer fitting FRRF126RYL. Snap-on feature allows cover to be installed and removed with no tools required. Creates radiused 1/2" (12.7mm) opening for easy access to add or remove cables.	—	1	5
---------------------	--	---	---	---

#### 12x4 to 6x4 Transition Left Reducer Fitting

<b>FRRF126LYL</b>	Attaches any 12x4 FiberRunner® Fitting or Channel to any 6x4 FiberRunner® Fitting or Channel while transitioning to the left. Accepts split cover FRRF126LSCYL.	(1 pc.) FRBC12X4YL (1 pc.) FRBC6X4YL	1	—
-------------------	---	---	---	---

#### Split Cover for 12x4 to 6x4 Transition Left Reducer Fitting

<b>FRRF126LSCYL</b>	Optional split cover for the transition left reducer fitting FRRF126LYL. Snap-on feature allows cover to be installed and removed with no tools required. Creates 1/2" (12.7mm) opening for easy access to add or remove cables.	—	1	5
---------------------	--	---	---	---

For other colors replace suffix YL (Yellow) with OR (Orange) or BL (Black).