

---

 TECHNICAL DATA SHEET

# Fittings, Armored Cable/Flexible Metallic Conduit

## Squeeze type fittings - XC series

### Steel City®




---

**Applications:**

- For indoor use only
- Electrical enclosures
- Knockouts (locknut included)
- Threaded entries

---

**Conformance:**

- UL File No. E-1383: 3/8" - 3/4"
- UL File No. E-23018: 1" - 3"
- CSA File No. 012798: 3/8" x 3"

Squeeze Type Fitting for attachment of Armored Cable or Flexible metallic conduits to electrical enclosures. Commercial and Industrial applications.

**Certifications / Standards:**



---

**Connection Type:**

- Squeeze Type
- Tri combo head screws for fittings under 2
- Hexagonal head and tri combo drive screws for fittings 2" and larger
- Non-insulated: XC-40\* series
- Insulated: XC-90\* series

---

**Materials / Finishes:**

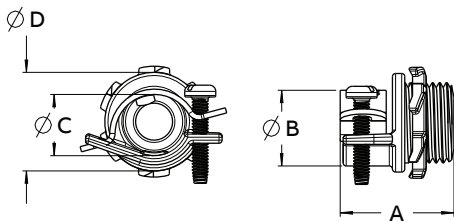
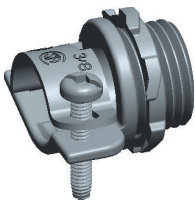
- Malleable Iron
- Steel zinc plated

**Product selection (inches)**

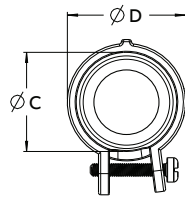
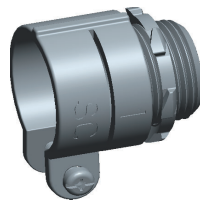
Part No.	Type	Conduit size	A	B	C	D	Threads	Throat Dia. w/ insulator	Throat Dia. w/o insulator	SCREW SIZE
XC-400	1	3/8	1.10	.90	.66	1.00	1/2 -14 npsm	N/A	.35	#8-32 UNC
XC-401 / XC-901	2	1/2	1.52	1.69	.97	1.22	1/2 -14 npsm	.55	.59	#10-32 UNC
XC-402 / XC-902	2	3/4	1.46	1.93	1.17	1.38	3/4 -14 npsm	.75	.76	#10-32 UNC
XC-403 / XC-903	2	1	1.68	2.39	1.46	1.72	1 -11.5 npsm	.96	.98	#10-32 UNC
XC-404 / XC-904	3	1 1/4	1.80	2.63	1.75	2.00	1 1/4 -11.5 npsm	1.20	1.21	#12-24 UNC
XC-405 / XC-905	3	1 1/2	2.46	2.90	2.01	2.29	1 1/2 -11.5 npsm	1.37	1.47	#12-24 UNC
XC-406 / XC-906	3	2	2.76	3.49	2.52	2.82	2 - 11.5 npsm	1.82	1.92	#12-24 UNC
XC-407 / XC-907	3	2 1/2	3.00	4.08	3.13	3.45	2 1/2 - 8 npsm	2.30	2.40	#12-24 UNC
XC-408 / XC-908	3	3	3.19	4.89	3.64	3.96	3 - 8 npsm	2.93	2.98	#12-24 UNC

Note: Product must be installed in accordance with applicable national and local electrical codes.

**Type 1**



**Type 2**



**Type 3**

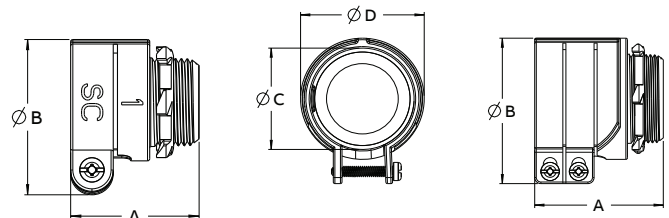
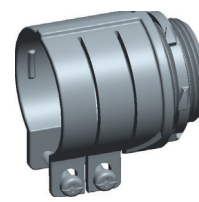


ABB Installation Products Inc.  
 Memphis, Tennessee  
 tnb.abb.com  
 USA

We reserve the right to make technical changes or modify the contents of this document without prior notice. With regard to purchase orders, the agreed particulars shall prevail. ABB Installation Products Inc. (Formerly Thomas & Betts Corp.) does not accept any responsibility whatsoever for potential errors or possible lack of information in this document.

We reserve all rights in this document and in the subject matter and illustrations contained therein. Any reproduction – in whole or in part – is forbidden without prior written consent of ABB Installation Products Inc. Copyright© 2019 ABB Installation Products Inc. All rights reserved.