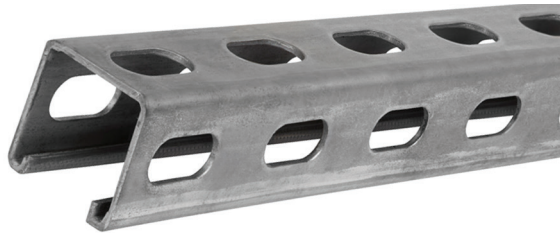


---

 TECHNICAL DATA SHEET

# Three-sided half-slot channel

## Four-sided functional modular channel

**Superstrut®**


Standard A-size 12-gauge HR steel channel having slots on all three sides designed for flexibility and modular install applications.

---

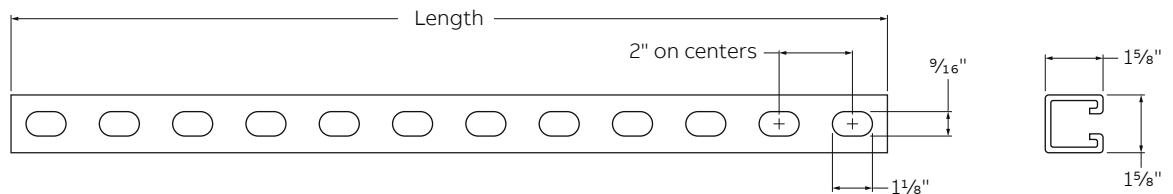
**Features:**

- Available in two lengths (10 and 20 feet)
- Channels are 1 $\frac{5}{8}$ " x 1 $\frac{5}{8}$ " (41.28 x 41.28 mm)
- Half slots are  $\frac{9}{16}$ " wide x 1 $\frac{1}{8}$ " (14.29 x 28.58 mm) by 2" (50.8 mm) center to center spacing

---

**Finishes / Material:**

- Pre-galvanized 12 gauge steel




---

**Product selection**

Part no:	Finish	Length		Standard carton quantity
		Feet	Meters	
A12003HS 10	GoldGalv®	10	3.05	500
A12003HS 10EG	SilverGalv®	10	3.05	500
A12003HS 20	GoldGalv®	20	6.1	500
A12003HS 20EG	SilverGalv®	20	6.1	500
A12003HS10PG	Pre-galvanized	10	3.05	500
A12003HS20PG	Pre-galvanized	20	6.1	500

Note: Product must be installed in accordance with applicable national and local electrical codes.

---

ABB Installation Products  
Memphis, Tennessee  
USA

---

We reserve the right to make technical changes or modify the contents of this document without prior notice. With regard to purchase orders, the agreed particulars shall prevail. ABB Installation Products Inc. does not accept any responsibility whatsoever for potential errors or possible lack of information in this document.

---

We reserve all rights in this document and in the subject matter and illustrations contained therein. Any reproduction – in whole or in part – is forbidden without prior written consent of ABB Installation Products. Copyright© 2018 ABB Installation Products. All rights reserved.

Let's write the future.  
Together. [abb.com](http://abb.com)