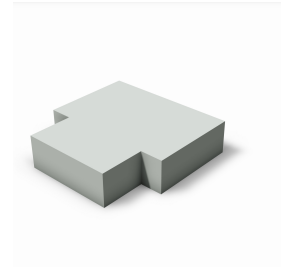


# REVIT CONTENT GUIDE

<b>Manufacturer:</b>	Wiremold
<b>File:</b>	Tee-ALA4800_Series-Wiremold-Flat.rfa
<b>Type Catalog:</b>	Not Applicable
<b>Rendering file:</b>	Not Applicable
<b>Schedule file:</b>	Schedule -ALA4800.rvt



## Instance Properties

Graphics	
Has Pathway Decoration	<input checked="" type="checkbox"/>
Invert Power and Communication	<input type="checkbox"/>
Identity Data	
Equipment Number*	
Part Description*	ALA4800 Series Flat Tee
Part Number*	ALA4815

## Type Properties

The family contains the following 1 types:  
Standard (Values for this type are shown below)

Constraints	
Default Elevation	0.000
Dimension	
Height*	2.250
Width*	9.000
Identity Data	
Copyright*	Copyright © Wiremold
Date Last Modified*	May 28, 2013
Description	See Part Description
Equipment Abbreviation*	RW
Family Version*	1.0.0
Manufacturer	Wiremold
Model	See Part Number
Model Disclaimer*	For More Information, Contact Wiremold
Original Creation Date*	May 28, 2013
Product Documentation Link*	<a href="http://www.legrand.us/~ /media/92E79486237949BE8ADADBABDA018C70.ashx">http://www.legrand.us/~ /media/92E79486237949BE8ADADBABDA018C70.ashx</a>
Product Page URL *	<a href="http://www.legrand.us/wiremold/raceway/aluminum-raceway/dual-channel-raceway/ala4800-large-raceway/ala4811-flat-elbow.aspx">http://www.legrand.us/wiremold/raceway/aluminum-raceway/dual-channel-raceway/ala4800-large-raceway/ala4811-flat-elbow.aspx</a>
Provide Feedback*	<a href="https://www.surveymonkey.com/s/BDXT5XT">https://www.surveymonkey.com/s/BDXT5XT</a>
URL	<a href="http://www.legrand.us/wiremold.aspx">http://www.legrand.us/wiremold.aspx</a>
Materials	
Product Material*	Aluminum - Wiremold

Half-tone text in the property tables indicates that the value is locked from editing.

\*Indicates Shared Parameter and can be scheduled

## Loading and Placing into the Project

One "Electrical Fixtures" family is supplied and can be loaded into a Revit project through all traditional methods. The tee requires a work-plane host

to be placed within the project (i.e. wall). Also, ensure that the visibility settings within the project are modified to have the Electrical Fixtures category visible.

For ease of use all raceway should be placed in 3D.

## Project Behavior

Within the type and instance properties dialogues, the user will find useful information for scheduling purposes such as Height, Width, and other unique properties of the model. In "Identity Data" the user will find information specific to Wiremold and the model, i.e.: family revision information, Wiremold copyright information, part description, product URL and other specific data. \*See scheduling description below.

The entire run of a channel in a closed system will be used for either power or communication

## Instance Parameter

In the "Instance Parameters", the user has the following options to modify:

- Equipment Number - For tagging each placed instance.

- Has Pathway Decoration - Toggles the visibility of the pathway decoration lines.

- Invert Power and Communication- Inverts the power and communication lines.

## Type Parameter

Each type represents a manufactured product. Therefore, the type parameters should not be modified by the user for standard configuration. Please note:

- Product Documentation Link - Directs a webpage to the products online listing.

- Equipment Abbreviation - For filtering schedules. \*See scheduling description below.

## Visibility

For best performance, all model geometry is turned off in all views and represented through masking regions and symbolic/model lines that update automatically when a user changes view properties.

## Rendering

When the family file is loaded into the project, standard Wiremold materials are imported. These may be modified, though ensure that the modification selection matches an actual manufacturer supplied option.

## Schedule Creation

Wiremold products may be scheduled utilizing the schedule view in the given project file. Select and copy (Ctrl-C) the schedule from the sheet view and paste it (Ctrl-V) into a sheet in your project. The schedule filters are set to look for only those units designated with Manufacturer as "Wiremold" and Equipment Abbreviation as "RW". The schedules contain special functionality for displaying the configured order numbers of the selected types.