



TRAY RIGHT AWAY

*Get ladder tray faster,
directly to your jobsite.
Ships from our facility
in **10 days**.*

#LegrandImprovingLives

 **legrand**[®]

CUT SHIPPING TIMES IN HALF. START YOUR PROJECTS SOONER.

With **Tray Right Away**, you can get up and running in no time. With our expedited shipping, our most popular selection of sturdy and innovative Itray Ladder Tray items leaves our facility within **10** business days after you place your order. Larger Tray Right Away orders that require more than one shipment to be complete will result in the first shipment shipped in 10 days with additional shipments sent at a rate of 1 truckload per week until the order is complete. Streamline your delivery and installation all at once.

Tray Right Away includes Itray 4" and 6" depths with NEMA 12C and 20C class designations.

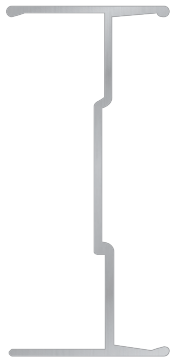
JUST WHAT YOU NEED, ONLY MUCH QUICKER.

- Absolutely no upcharges or extra costs for first truck load
- Access to our most popular ladder tray items
- Up to one truckload ships within 10 business days of order placement*
- Everything you need to assemble a complete system
- Dedicated customer service, production & logistics teams
- Can be ordered and quoted via **myLegrand**

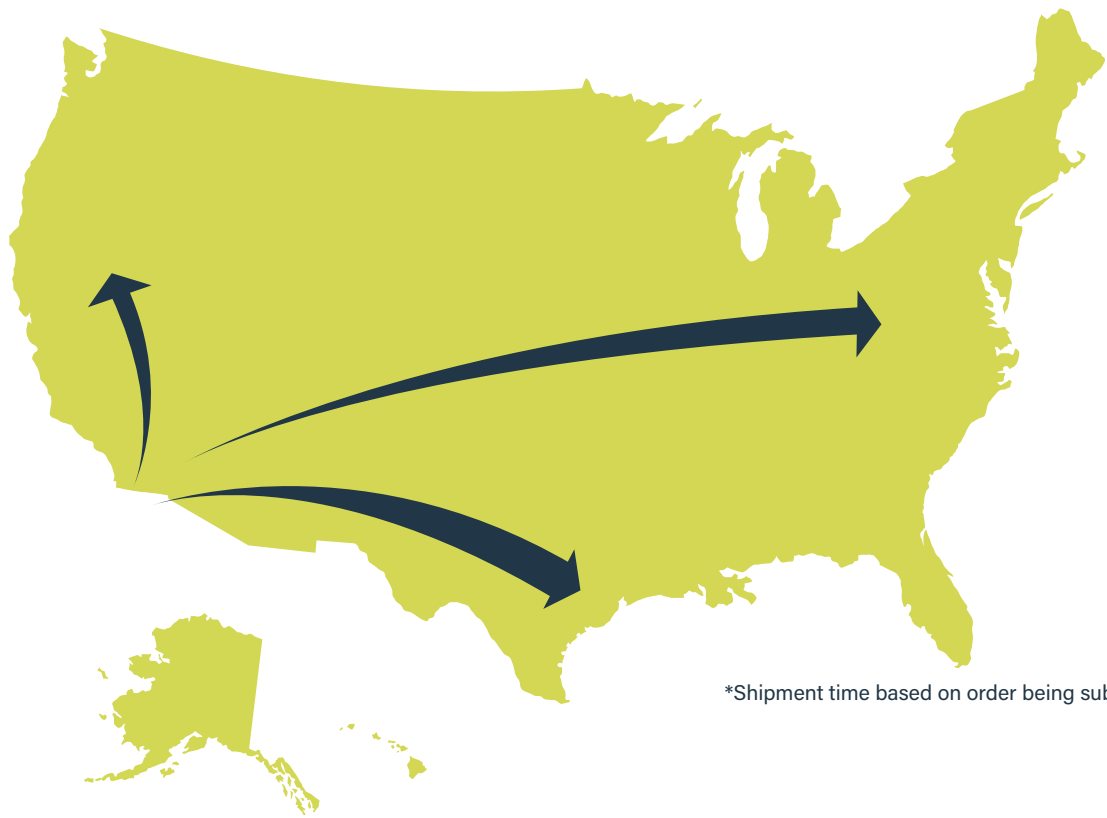


CHOOSE THE BETTER, STRONGER CABLE TRAY.
CHOOSE ITRAY.

- 30% faster installation with 50% less hardware
- Simple mid-span splicing while maintaining full NEMA load class
- I-beam side rails make a stronger, lighter tray
- Smoother, easier cable pulling with less damage
- Fittings that fit well together allow for smoother installations
- All-aluminum construction
- Integrates well with most existing tray installations



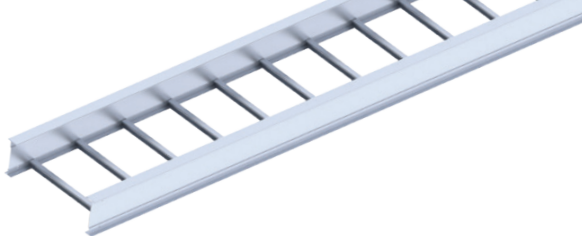
FROM HERE TO THERE. GET STARTED ANYWHERE.



*Shipment time based on order being submitted by 12:00PM CST.

TO ORDER: Just ask your sales rep to mark “Tray Right Away” on your quote. Be sure your order ships directly to the jobsite.

The products listed on the following product selection guide are eligible for the Tray Right Away program.



STRAIGHT SECTIONS

Part #	NEMA Class	Rung Spacing	Height	Length	Width
09-4A12C-S144-06	12C	9"	4"	144"	6"
09-4A12C-S144-12	12C	9"	4"	144"	12"
09-4A12C-S144-18	12C	9"	4"	144"	18"
09-4A12C-S144-24	12C	9"	4"	144"	24"
09-4A12C-S144-36	12C	9"	4"	144"	36"
09-6A12C-S144-06	12C	9"	6"	144"	6"
09-6A12C-S144-12	12C	9"	6"	144"	12"
09-6A12C-S144-18	12C	9"	6"	144"	18"
09-6A12C-S144-24	12C	9"	6"	144"	24"
09-6A12C-S144-36	12C	9"	6"	144"	36"
09-6A20C-S144-06	20C	9"	6"	144"	6"
09-6A20C-S144-12	20C	9"	6"	144"	12"
09-6A20C-S144-18	20C	9"	6"	144"	18"
09-6A20C-S144-24	20C	9"	6"	144"	24"
09-6A20C-S144-36	20C	9"	6"	144"	36"
09-6A20C-S240-06	20C	9"	6"	240"	6"
09-6A20C-S240-12	20C	9"	6"	240"	12"
09-6A20C-S240-18	20C	9"	6"	240"	18"
09-6A20C-S240-24	20C	9"	6"	240"	24"
09-6A20C-S240-36	20C	9"	6"	240"	36"

90° HORIZONTAL ELBOWS

Part #	Height	Radius	Width
LD-4A-90HB12-06	4"	12"	6"
LD-4A-90HB12-12	4"	12"	12"
LD-4A-90HB12-18	4"	12"	18"
LD-4A-90HB12-24	4"	12"	24"
LD-4A-90HB12-36	4"	12"	36"
LD-4A-90HB24-06	4"	24"	6"
LD-4A-90HB24-12	4"	24"	12"
LD-4A-90HB24-18	4"	24"	18"
LD-4A-90HB24-24	4"	24"	24"
LD-4A-90HB24-36	4"	24"	36"
LD-6A-90HB12-06	6"	12"	6"
LD-6A-90HB12-12	6"	12"	12"
LD-6A-90HB12-18	6"	12"	18"
LD-6A-90HB12-24	6"	12"	24"
LD-6A-90HB12-36	6"	12"	36"
LD-6A-90HB24-06	6"	24"	6"
LD-6A-90HB24-12	6"	24"	12"
LD-6A-90HB24-18	6"	24"	18"
LD-6A-90HB24-24	6"	24"	24"
LD-6A-90HB24-36	6"	24"	36"

HORIZONTAL TEES

Part #	Height	Radius	Width
LD-4A-HT12-06	4"	12"	6"
LD-4A-HT12-12	4"	12"	12"
LD-4A-HT12-18	4"	12"	18"
LD-4A-HT12-24	4"	12"	24"
LD-4A-HT12-36	4"	12"	36"
LD-4A-HT24-06	4"	24"	6"
LD-4A-HT24-12	4"	24"	12"
LD-4A-HT24-18	4"	24"	18"
LD-4A-HT24-24	4"	24"	24"
LD-4A-HT24-36	4"	24"	36"
LD-6A-HT12-06	6"	12"	6"
LD-6A-HT12-12	6"	12"	12"
LD-6A-HT12-18	6"	12"	18"
LD-6A-HT12-24	6"	12"	24"
LD-6A-HT12-36	6"	12"	36"
LD-6A-HT24-06	6"	24"	6"
LD-6A-HT24-12	6"	24"	12"
LD-6A-HT24-18	6"	24"	18"
LD-6A-HT24-24	6"	24"	24"
LD-6A-HT24-36	6"	24"	36"

HORIZONTAL CROSSES

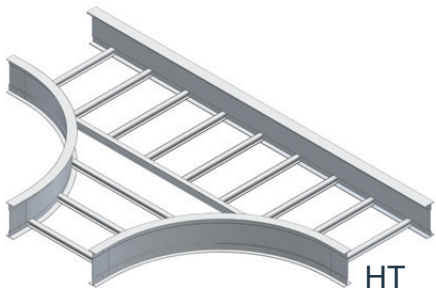
Part #	Height	Radius	Width
LD-4A-HX12-06	4"	12"	6"
LD-4A-HX12-12	4"	12"	12"
LD-4A-HX12-18	4"	12"	18"
LD-4A-HX12-24	4"	12"	24"
LD-4A-HX12-36	4"	12"	36"
LD-6A-HX12-06	6"	12"	6"
LD-6A-HX12-12	6"	12"	12"
LD-6A-HX12-18	6"	12"	18"
LD-6A-HX12-24	6"	12"	24"
LD-6A-HX12-36	6"	12"	36"



HX



90HB



HT

PRODUCT SELECTION GUIDE



90° VERTICAL OUTSIDE ELBOWS

Part #	Height	Radius	Width
LD-4A-90VO12-06	4"	12"	6"
LD-4A-90VO12-12	4"	12"	12"
LD-4A-90VO12-18	4"	12"	18"
LD-4A-90VO12-24	4"	12"	24"
LD-4A-90VO12-36	4"	12"	36"
LD-4A-90VO24-06	4"	24"	6"
LD-4A-90VO24-12	4"	24"	12"
LD-4A-90VO24-18	4"	24"	18"
LD-4A-90VO24-24	4"	24"	24"
LD-4A-90VO24-36	4"	24"	36"
LD-6A-90VO12-06	6"	12"	6"
LD-6A-90VO12-12	6"	12"	12"
LD-6A-90VO12-18	6"	12"	18"
LD-6A-90VO12-24	6"	12"	24"
LD-6A-90VO12-36	6"	12"	36"
LD-6A-90VO24-06	6"	24"	6"
LD-6A-90VO24-12	6"	24"	12"
LD-6A-90VO24-18	6"	24"	18"
LD-6A-90VO24-24	6"	24"	24"
LD-6A-90VO24-36	6"	24"	36"

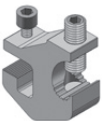


CLAMPS

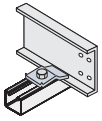
Part #	Part Name
A-A840-01-ZN	Tin Plated Ground Clamp, Zinc Plated Hardware
Z-1893-01-ZN	Hold Down Expansion Clamp Kit, Zinc Plated Steel-Includes 3/8"x1½" Hex Head Bolt & ¾" Flanged Hex Nut
Z-1893-02	Zinc Hold Down Expansion Clamp Kit, No Hardware
Z-1893-03-ZN	Hold Down Expansion Clamp Kit, Zinc Plated Steel-Includes 3/8"x1½" Hex Head Bolt & ¾" Channel Nut w/Spring
ABJ-2000-GE	Laminated Bonding Jumper - Includes Hardware
A-1893-01-ZN	Aluminum -Includes 3/8"x1½" Hex Head Bolt & ¾" Flanged Hex Nut
A-1893-02	Aluminum Hold Down Expansion Clamp Kit, No Hardware
A-1893-03-ZN	Aluminum -Includes 3/8"x1½" Hex Head Bolt & ¾" Channel Nut w/Spring

90° VERTICAL INSIDE ELBOWS

Part #	Height	Radius	Width
LD-4A-90VI12-06	4"	12"	6"
LD-4A-90VI12-12	4"	12"	12"
LD-4A-90VI12-18	4"	12"	18"
LD-4A-90VI12-24	4"	12"	24"
LD-4A-90VI12-36	4"	12"	36"
LD-4A-90VI24-06	4"	24"	6"
LD-4A-90VI24-12	4"	24"	12"
LD-4A-90VI24-18	4"	24"	18"
LD-4A-90VI24-24	4"	24"	24"
LD-4A-90VI24-36	4"	24"	36"
LD-6A-90VI12-06	6"	12"	6"
LD-6A-90VI12-12	6"	12"	12"
LD-6A-90VI12-18	6"	12"	18"
LD-6A-90VI12-24	6"	12"	24"
LD-6A-90VI12-36	6"	12"	36"
LD-6A-90VI24-06	6"	24"	6"
LD-6A-90VI24-12	6"	24"	12"
LD-6A-90VI24-18	6"	24"	18"
LD-6A-90VI24-24	6"	24"	24"
LD-6A-90VI24-36	6"	24"	36"



A840



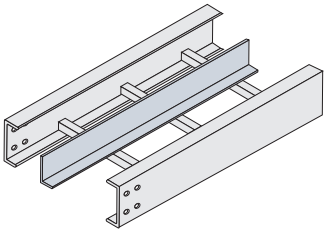
1893

HANGER KITS

Part #	Part Name	Length
M-0393-16-ZN	Single Hanger Channel Kit	16"
M-0393-22-ZN	Single Hanger Channel Kit	22"
M-0393-28-ZN	Single Hanger Channel Kit	28"

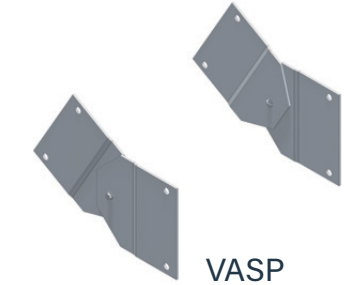
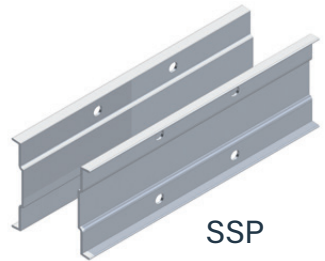
DIVIDER KITS

Part #	Part Name	Height	Radius
4A-0012-99-S6	Straight Divider Kit	4"	12'
4A-0606-99-S6	Flexible Divider Kit	4"	6'
6A-0012-99-S6	Straight Divider Kit	6"	12'
6A-0606-99-S6	Flexible Divider Kit	6"	6'
4A-DIV-90VO12-S6	Outside Vertical Elbow Divider	4"	12'
4A-DIV-90VO24-S6	Outside Vertical Elbow Divider	4"	24'
4A-DIV-90VI12-S6	Inside Vertical Elbow Divider	4"	12'
4A-DIV-90VI24-S6	Inside Vertical Elbow Divider	4"	24'
6A-DIV-90VO12-S6	Outside Vertical Elbow Divider	6"	12'
6A-DIV-90VO24-S6	Outside Vertical Elbow Divider	6"	24'
6A-DIV-90VI12-S6	Inside Vertical Elbow Divider	6"	12'
6A-DIV-90VI24-S6	Inside Vertical Elbow Divider	6"	24'



SPLICE KITS

Part #	Part Name	Height
4A-SSP-GE	Straight Splice Kit	4"
4A-FSP-GE	Fitting Splice Kit	4"
6A-SSP-GE	Straight Splice Kit	6"
6A-FSP-GE	Fitting Splice Kit	6"
4A-EXSP-S6	Expansion Splice Kit	4"
6A-EXSP-S6	Expansion Splice Kit	6"
4A-HASP-GE	Horz Adj Splice Kit	4"
6A-HASP-GE	Horz Adj Splice Kit	6"
4A-VASP-GE	Vert Adj Splice Kit	4"
6A-VASP-GE	Vert Adj Splice Kit	6"
4A-SSP-S6-UPCHG	Straight Splice Kit with Stainless Steel Hardware	4"
4A-FSP-S6-UPCHG	Fitting Splice Kit with Stainless Steel Hardware	4"
6A-SSP-S6-UPCHG	Straight Splice Kit with Stainless Steel Hardware	6"
6A-FSP-S6-UPCHG	Fitting Splice Kit with Stainless Steel Hardware	6"



CABLE DROPOUT KITS

Part #	Width
A-DO-06-S6	6"
A-DO-12-S6	12"
A-DO-18-S6	18"
A-DO-24-S6	24"
A-DO-36-S6	36"

MORE INFO VISIT:

www.legrand.us/cablofil/tray-right-away

TO ORDER:

Just ask your sales rep to mark "Tray Right Away" on your quote.

ORDER NOW:

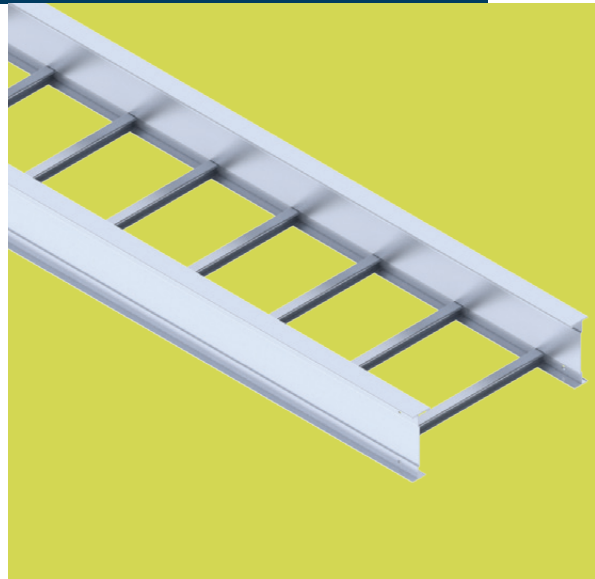
Contact our customer service team:
1.844.957.3783 (Option 3 for Cablofil then
Option 1 for Customer Service)

Fax: 800.223.4196

Mon - Fri: 8am - 7pm EST
(excluding holidays)

US-MAS-SharedMail-Cablofil-Pricing@Legrand.us

©2025 Legrand. All Rights Reserved. BR3203 04/2025



Electrical Wiring Systems
60 Woodlawn Street
West Hartford, CT 06110
1.877.BY.LEGRAND (295.3472)
www.legrand.us

