

TR20USBAC6CDW, TR20USBAC6CDGN, TR20USBAC6CDBK, TR20USBAC6CDBL

Pass & Seymour® Plug Load Fed Spec Tamper-Resistant Duplex Receptacles with USB Charging capabilities and permanent markings are designed with strength, durability, and code compliance in mind. They were designed for the commercial market, and are capable of withstanding heavy use due to their UL Federal Specification certification. This product features 6.0A USB charging capability, auto-ground clips, zinc-plated ground terminal screw, as well as triple-wipe brass contacts for lasting retention. The screw-pressure-plate back wiring makes installation fast and easy.

## Features & Benefits

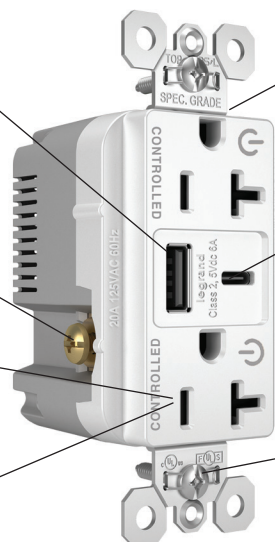
**Overall 6.0A charging capability** with smart current-sharing technology to allow for full 3A through a single port.

**Slim design allows for installation in standard depth wall boxes.**

**Posted terminal screws and external back-wire pressure plates** for more productive and more reliable terminations

**Combination AC USB receptacles** include two 5-volt DC USB ports that work with USB 2.0 & 3.0 compatible devices.

**AC receptacles are tamper-resistant to meet NEC. Patented shutter system** - now with black "invisi-shutters" for an invisible effect preferred by end-users - helps prevent improper insertion of foreign objects.



**TR20USBAC6CDW**

**Multiple color options available.**

**Reinforced nylon USB Type-A ports** to withstand abuse over the life of the product.

**Available with (1) USB Type-A & (1) USB Type-C port** to charge the latest mobile devices.

**Code compliant Plug Load Controlled receptacle** with permanent markings that use abrasion resistant ink. Clear indication to identify a controlled wiring device from others devices.

**Stainless steel auto-ground clips assure positive ground.**

**Type-C ports carry a maximum rating of 10,000 insertions.**

**Efficient power supply** meets the Department of Energy (DoE) Level VI no-load power requirement of 100mW max for external power supplies.

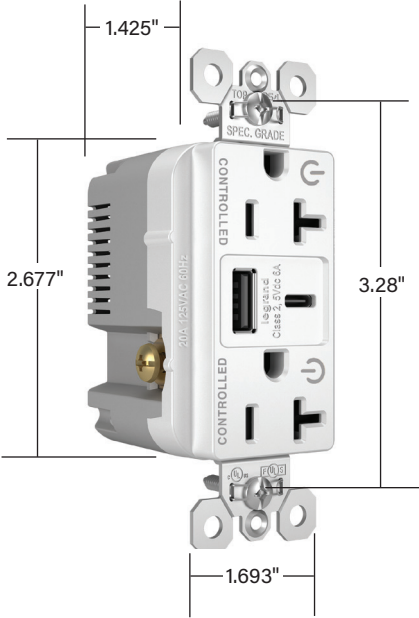
## Compliance



2021 International Energy Conservation Code (IECC), 2023 NEC, Part 6: Building Energy Efficiency Standards, complies with NEMA WD1 and WD6, ROHS,NFPA 70 CSA C22.2 No. 42, CSA C22.2 No. 223 CA Title 24, and ASHRAE Energy Efficiency Standard 90.1. cULus Listed, Complies with test requirements UL 498, UL 1310

Technical Information

Performance	
Electrical	
Dielectric Withstand Voltage	Withstands 1500V minimum
Maximum Working Voltage	125V
Current Interrupting	Certified for current interrupting at full-rated current (receptacle only)
Maximum Temperature Rise	30°C after 50 cycles at full-rated current after 50 cycles of overload are 150% of rated current with direct current
No-load power draw	10.7 mW meets Department of Energy (DoE) Level VI requirement
FCC Part 15	Class B
Mechanical	
Terminal Identification	Per UL and CSA
Terminal Accommodation	Back and side wire terminals accommodate #14 AWG - #10 AWG stranded and solid copper wire
Product Identification	Ratings are a permanent part of device
Environmental	
Flammability	UL94 V2 (for device cover) 5V (for device body and frame)
Operating Temperature	Maximum continuous +60°C Minimum -40°C without impact
UV Resistance	All enclosure materials are UV stabilized
Materials	
Face	Polycarbonate
Body	Nylon
Contacts	CDA 260 Brass
Mounting Strap	.049" Zinc-Plated Steel
Terminal Screws	Tri-Drive Zinc-Plated Steel with Either Clear or Black Chromate For Color Identification
Ground Screw	Tri-Drive Steel with Green Chromate
Mounting Screws	Tri-Drive Steel
Auto-Ground Clip	Stainless Steel



TR20USBAC6CDW

Warranty  
1 Year

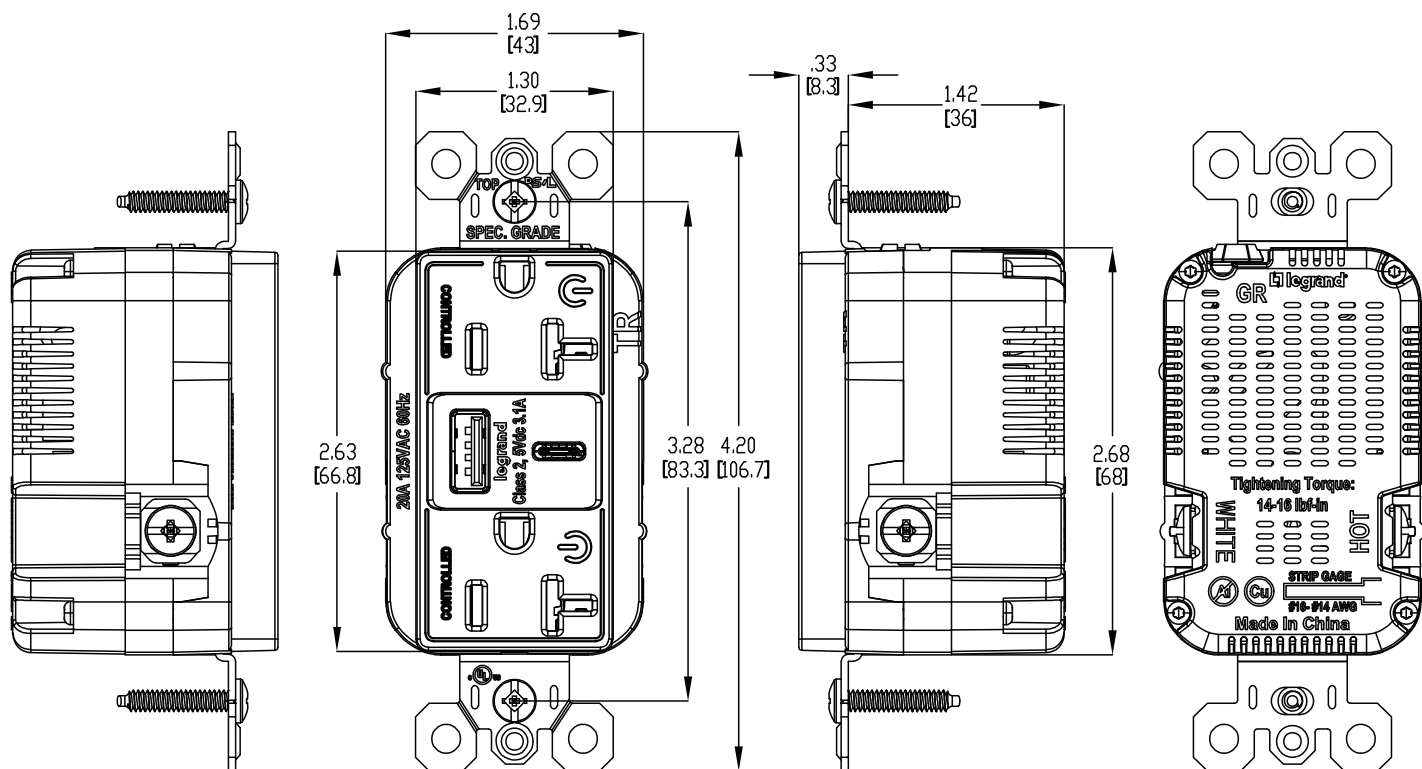
## Ordering Information

### Specification Grade USB Type-A/Type-C Chargers with Duplex Tamper-Resistant Receptacles

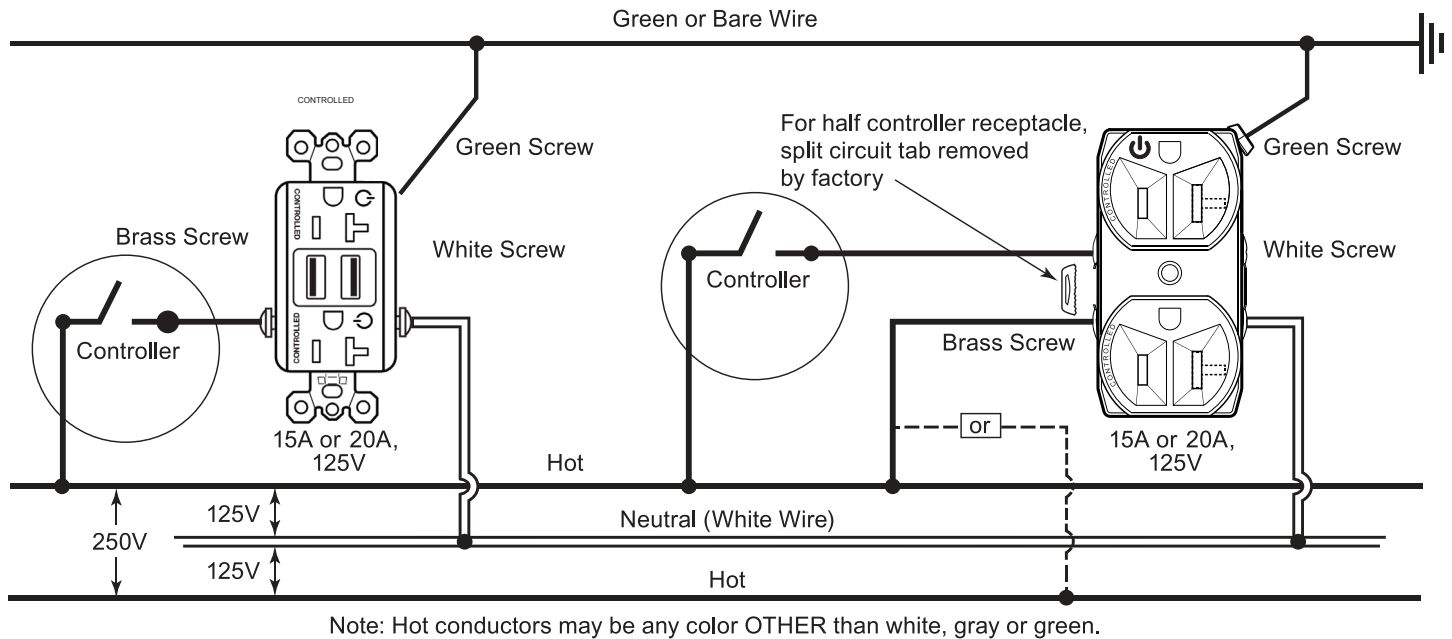
Catalog Number	Description	Rating		Color	NEMA Config. No.
		A	VAC		
TR20USBAC6CDW	Spec Grd - A/C	20	125	White	5-20R
TR20USBAC6CDGN	Spec Grd - A/C	20	125	Green	5-20R
TR20USBAC6CDBK	Spec Grd - A/C	20	125	Black	5-20R
TR20USBAC6CDBL	Spec Grd - A/C	20	125	Blue	5-20R



**NEMA  
5-20R**



## Plug Load Controllable Receptacles Wiring Diagram



## Vertical Markets

- Healthcare
- Hospitality/Lodging
- Education
- Office
- Airports
- Institutional
- Retail
- Multiple Dwelling

## Also available

- SPD & Isolated Ground Devices
- Ground Continuity Monitoring (GCM)
- Straight Blade Plugs & Connectors
- Turnlok® Locking Devices
- Weatherproof Boxes & Covers
- IEC 309 Industrial Products
- Flexcor® Wire Mesh Grips
- Bulk Solutions