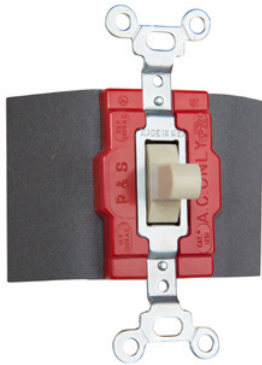


Single-Pole, Double-Throw Manual Control Switch, 20A, 120/277V.



Features & Benefits

Oversize silver alloy contacts for long life and better heat dissipation.

Side wired terminals accept #14 - #10 AWG copper or copper-clad conductors.

Fiber terminal insulation barriers standard.

Can be mounted in standard device boxes or in NEMA 1 sheet steel enclosures.

Bodies, covers, and toggles molded of durable nylon.

Single Pole-Double Throw and Double Pole-Double Throw.

Locking Switches supplied with one 1498-NT key.

Normally open.

For covering patents, see www.legrand.us/patents.

For compatible wall plate options, from our TradeMaster unbreakable plates to our radiant screwless plates to our metal wall plates, [click here](#).

Specifications

General Info

Product Line	Pass & Seymour	Color	Ivory
Finish	Matte	UPC Number	785007125115
Country Of Origin	Mexico	Features	Durable
Switch Type	Toggle	Number of Switches	1
Application Sector	Commercial, Industrial	Wall Plate Included	No
Standard	UL 498	Warranty Type	1-Year Limited Warranty
Type	Manual Controller		

Dimensions

Product Width US	1.5 in	Product Depth US	1.469 in
Product Height US	3.281 in		

Listing Agencies / 3rd Party Agencies

CSA Listed	Yes	cULus Listed	Yes
CSA File Number	17949		

Technical Information

Load Rating	20 A @ 120/277 VAC	Connection Location	Side Only
Terminal Accommodation	#14 AWG - #10 AWG	Number of Gangs	1
Throw Type	Double Throw	Amperage	20 A
Number of Poles	Single Pole	Requires Neutral Wire	Yes
Indoor/Outdoor	Indoor	Mounting Type	Wall Box
Wire Connection Type	Screw Terminals	Voltage	120/277 V
Load Type	CFL, Fluorescent, Halogen, Incandescent, LED, Universal, Xenon		