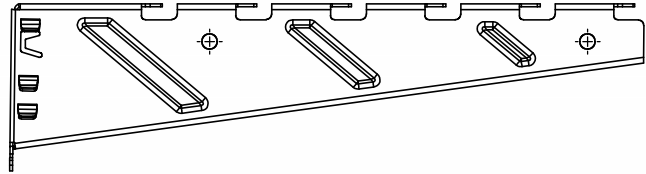
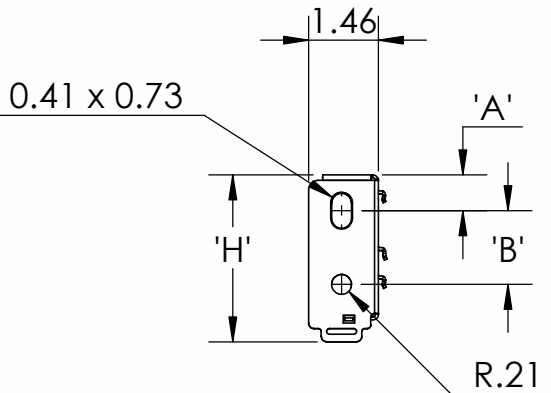
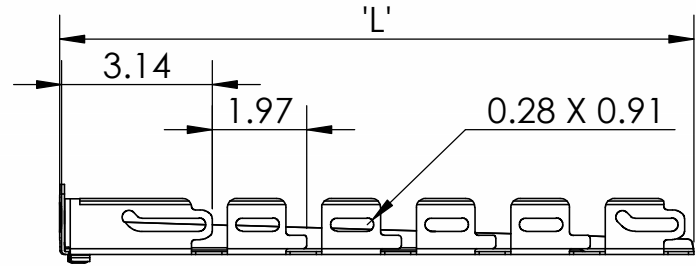
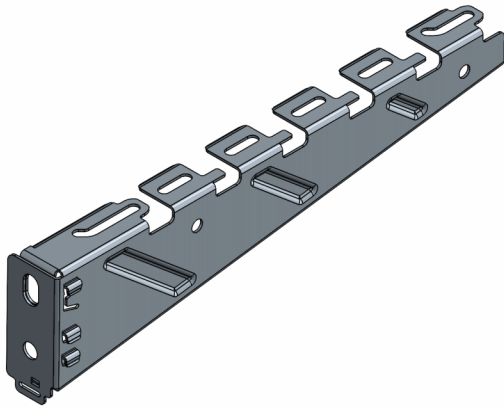




Cablofil Wire Mesh Cable Tray Support

Universal Bracket **FASUCB**



PART NAME	L (IN)	H (IN)	A (IN)	B (IN)	PART WEIGHT (LBS)	LOAD DATA (LBS)
FASUCB100	5.15	2.87	0.71	0.98	0.26	225
FASUCB150	7.11	3.03	0.71	1.10	0.36	225
FASUCB200	9.08	3.05	0.71	1.10	0.41	247
FASUCB300	13.18	3.64	0.75	1.54	0.77	337
FASUCB450	19.08	5.36	0.79	2.72	2.08	337
FASUCB500	21.05	5.39	0.79	2.72	2.24	450
FASUCB600	24.99	5.44	0.79	2.72	2.47	360

EDF RAIL INSTALLATION:
FASU SIZES 4" TO 12" WILL SNAP
DIRECTLY INTO EDF RAIL. ONE CA PIN
(SOLD SEPARATELY) IS RECOMMENDED
TO INSTALL 18" TO 24" FASU.

Finish: PG (Pre-Glavanized)
BL (Black Painted)
WH (White Painted)
PE (Custom Painted)
HR (High Resistance)
316L (Stainless Steel 316)

"Copyright LNA, Inc. Drawings are proprietary
and may not be copied or otherwise duplicated
or used without express written permission."

CABCS0372

Legrand
8319 State Rt. 4
Mascoutah, IL 62258 USA
800-658-4641
618-566-3250
Fax 618-566-4978
www.legrand.us/cablofil