

INSTALLATION INSTRUCTIONS FOR 4600 ENCLOSURE.

CAUTION: To prevent severe shock or electrocution, always turn the power OFF at the service panel before working with wiring. Devices should be installed per device instructions and in accordance with national and local electrical codes.

CAUTION: Caulking compound must be used to prevent moisture from entering device. Follow instructions in Step 3.

1. Set standard 4" or 4-11/16" box into wall 1-1/8" to 1-1/2" so front edge of adapter will be flush, or recessed not more than 1/4" from finished wall. Fasten Adapter to box with two 8-32 x 5/8" flat head screws provided – side marked "TOP" at top of box (See Figure 1)
2. Mount Plate and Device to Adapter as follows:
 - A. For 46001P/46008P and Device (See Figure 2A).
 - a. Using pliers, remove ear tabs from strap of device.
 - b. Wire device per device instructions.
 - c. Attach metal Plate (46001P, 46008P) to device using one or two 6-32 x 3/8" round head screw(s), included.
 - d. Mount Plate/Device assembly to Adapter in vertical position with two 8-32 x 3/8" round head screws provided.
 - e. Go to Step 3.
 - B. For 460026P and Device (See Figure 2B).
 - a. Wire device per device instructions.
 - b. Place Plate (460026P) over device so that word "TOP" on Plate is at top of Adapter and printing is visible. NOTE: device will be in horizontal position.
 - c. Mount Plate and Device to Adapter with two 8-32 x 3/8" round head screws provided.
 - d. Go to Step 3.
 - C. For 46007P and Device (See Figure 2C).
 - a. Wire device per device instructions.
 - b. Place Plate (46007P) over device so that the mounting holes of the plate are in the upper left and lower right corners of device as shown in Figure 2C. If device mounting holes line up with device mounting holes in plate (smaller holes), attach plate to device using two 6-32 x 3/8" round head screw(s), included. NOTE: 30 and 50-ampere receptacles should be installed with ground contacts at top to facilitate the use of angle cord sets.
 - c. Mount Plate and Device to Adapter with two 8-32 x 3/8" round head screws provided.
 - d. Got to Step 3.
3. Apply caulking compound to back of cover to provide weatherproof seal. Fasten Cover to Adapter with two 8-32 x 1" truss head screws provided. Elongated slots in cover allow for alignment (See Figure 3).

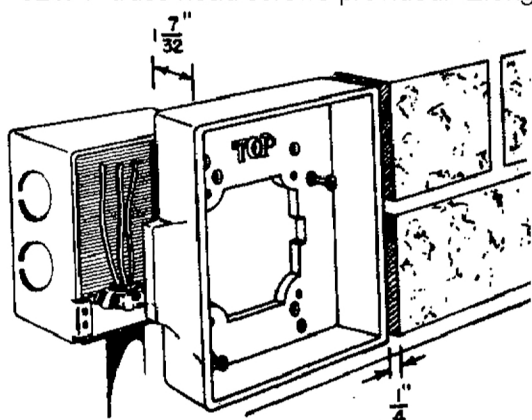


Figure 1

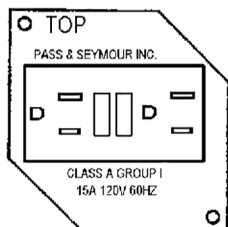


Figure 2B

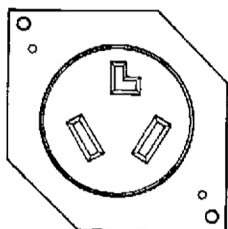


Figure 2C

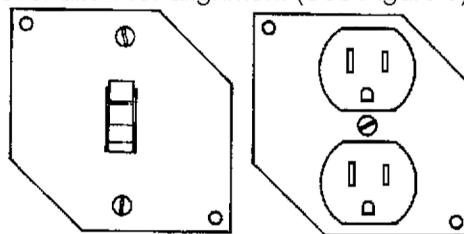


Figure 2A

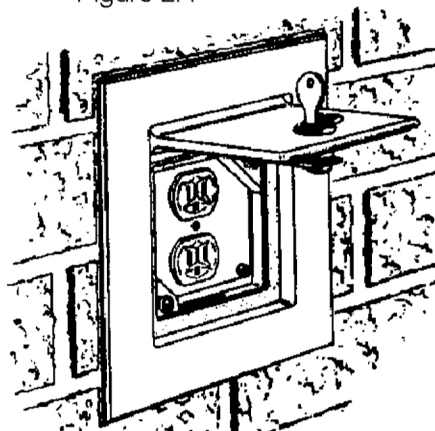


Figure 3