
TEMPLATE

MOUNTING INSTRUCTIONS

Box must be securely and rigidly fastened to the outside of the building structure and the non-metallic cable secured within 8 inches of the box.

Box may be mounted on any type surface where depth of gap under the mounting flange does not exceed 1/2 inch.

To prevent moisture from entering building wall, a non-hardening elastomeric caulking compound of RTV type, silicone, neoprene, urethane or polyurethane should fill the area between the mounting flange and wall.

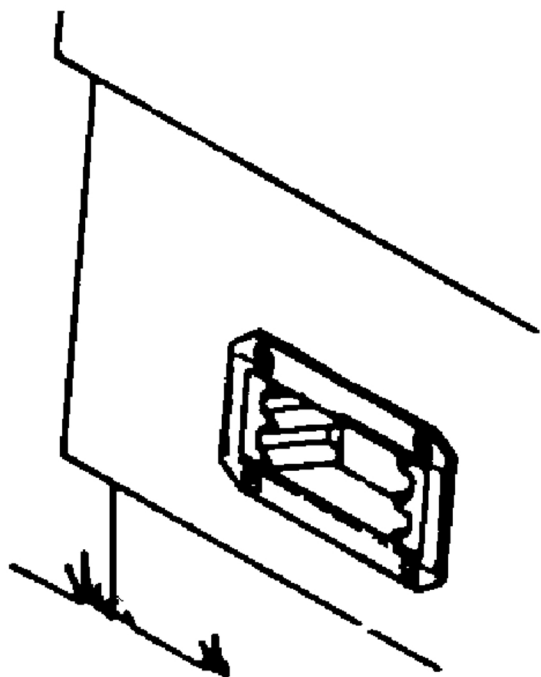
Note: Use this card as a template for cutting mounting hole. See mounting illustrations on the other side.

Pass & Seymour
L1 legrand®

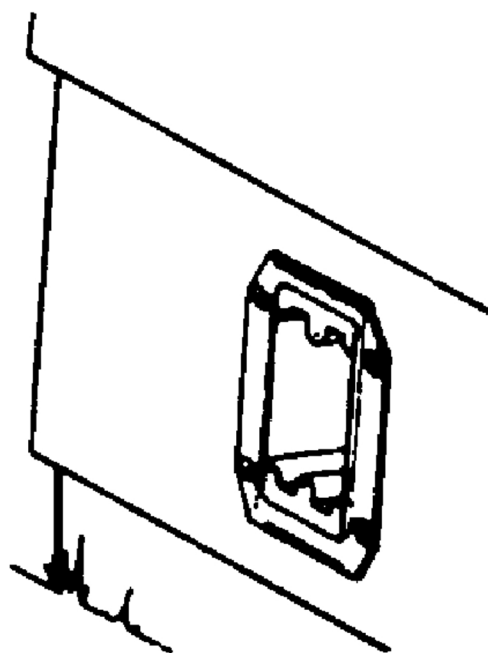
Pass & Seymour/Legrand

P.O. Box 4822

Syracuse, NY 13221



HORIZONTAL MOUNTING



VERTICAL MOUNTING