



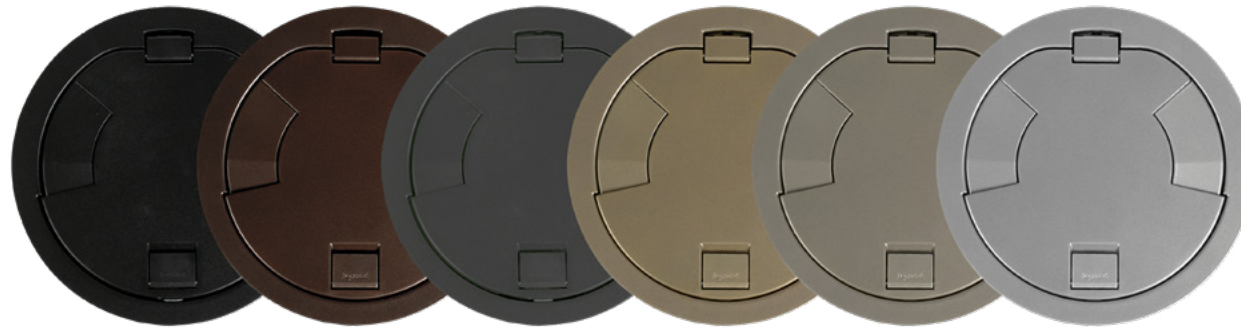
 legrand®

legrand

# EVOLUTION™ SERIES POKE-THRU FINISHES

## 1 POWDER COAT

- Perfect for areas with light foot traffic or when placed under furniture



Black

Bronze

Gray

Brass\*

Nickel\*

Aluminum\*

## 2 DURABLE FINISHES

- Perfect for areas with high foot traffic or projects with attention to aesthetics
- Lasts 4x longer than standard powder coat finishes and 3x longer than industry standard finishes



Satin  
Brass

Satin  
Nickel

Brushed  
Aluminum

## 3 HEAVY-DUTY

- Tested to a load rating of 8,000 lbs. with 1.5 factor of safety
- Naturally resistant to chemicals and corrosion from harsh cleaning solutions
- Perfect for areas that will see significant rolling loads or abrasive cleaners



Brass

Stainless Steel

\*Brass, nickel and aluminum powder coat finishes are standard options for 10AT poke-thru only



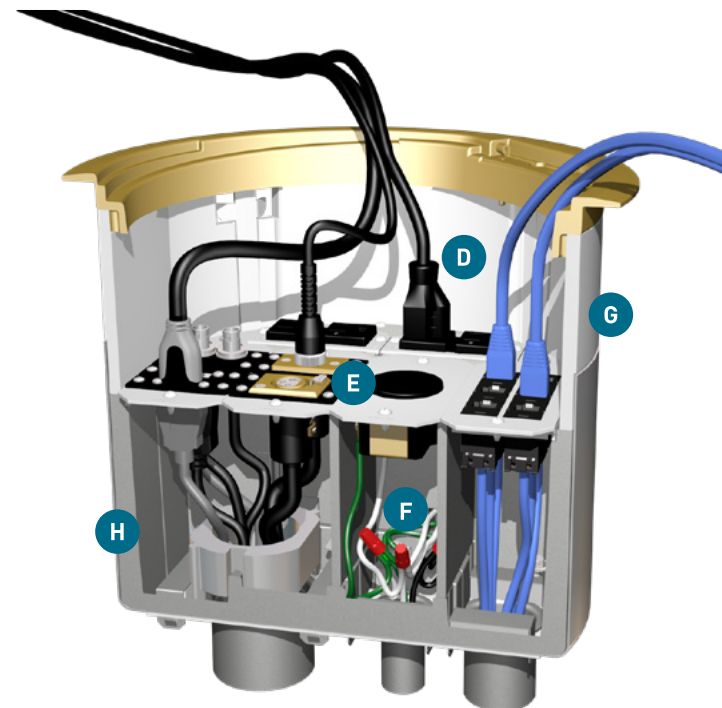
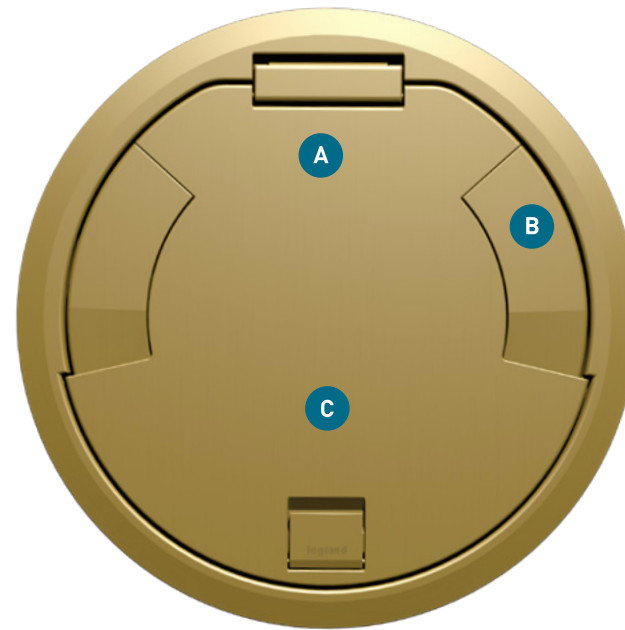
10" Evolution™ Series Poke-Thru Device

legrand

# 10" EVOLUTION™ SERIES

## An industry first: 8-gangs of capacity.

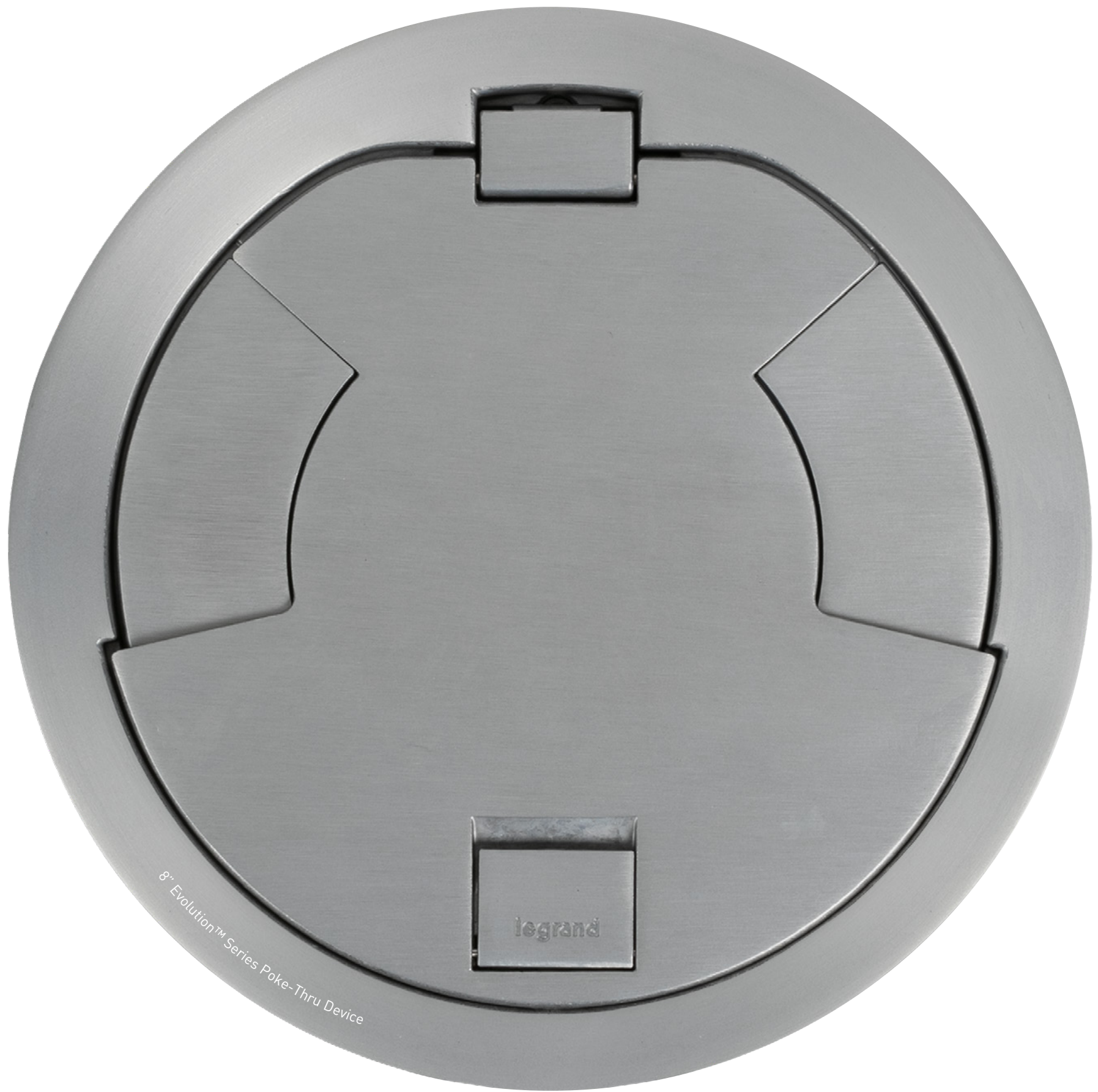
The Evolution Series 10" Poke-Thru Device offers more flexibility, versatility and capacity than any other poke-thru device on the market, featuring 8-gangs of capacity with maximum configurability. An improved cover design features spring-loaded slide egress doors that automatically close around connections when the cover is closed. Generous internal capacity accommodates wiring connections inside the unit, eliminating junction boxes and simplifying moves, adds and changes.



- A** Smarter design has a more balanced symmetrical look with a stronger, durable hinge for easier cover operation.
- B** Sliding egress doors auto-close around cables, reducing trip hazards and improving aesthetics of the space.
- C** Multiple finishes match and complement any decor.
- D** Fully finished interior with devices that are recessed 4½" (114mm) below the surface to allow for 30A turnlok devices.
- E** Largest capacity poke-thru device on the market to accommodate 8-gangs for power, communications and A/V services.
- F** No junction box required. The Evolution 10" Series Poke-Thru Device is the first poke-thru device developed to accommodate wiring connections inside the unit, making it easier to install and maintain.
- G** UL Listed and classified to maintain up to a 2-hour fire rating.
- H** Depth behind the plates is the deepest in the industry with 4¾" (120mm) of space for most manufacturers' A/V devices.







8" Evolution™ Series Poke-Thru Device

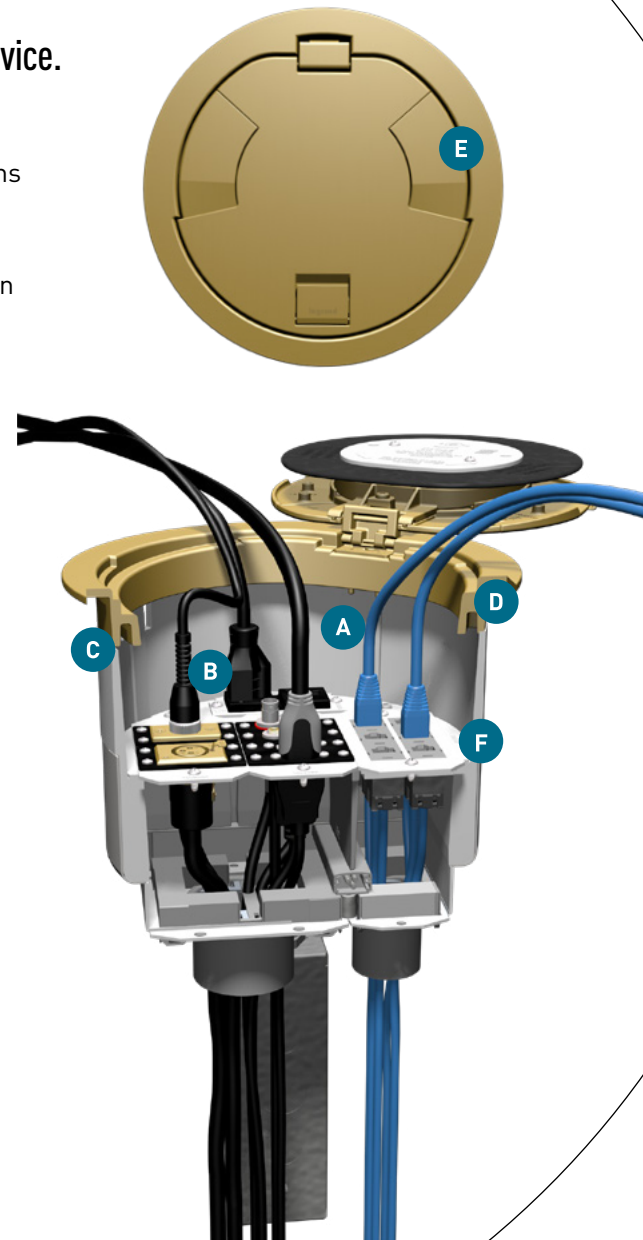
legrand

## 8AT EVOLUTION™ SERIES

### A large capacity, dual service recessed poke-thru device.

The Evolution Series Poke-Thru Device is a recessed unit with 5-gangs of capacity that provides maximum power, communications and A/V services at the workstation. The Evolution Series has been designed to accept Legrand AVIP Series, Extron® Electronics MAAP and AAP Series devices. The 8AT Series is available in a prewired option with (2) 20A prewired receptacles and an unwired option that allows for maximum configurability.

- A** Accepts both Wiremold® open system adapters and Ortronics® TracJack® and Series II modular inserts.
- B** Each receptacle can be wired as a separate circuit and can be wired as a standard or isolated ground device.
- C** 8AT Series requires an 8" (203mm) core hole. Minimum hole diameter 8" (203mm).
- D** Service head diameter 9¼" (235mm). Total depth 16¾" (425mm).
- E** All-metal covers with spring loaded sliding egress doors.
- F** Finished interior.











6" Evolution™ Series Poke-Thru Device

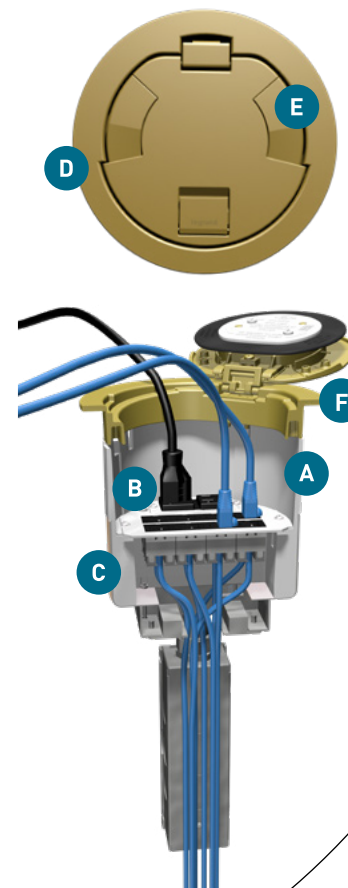
legrand

## 6AT EVOLUTION™ SERIES

### The recessed poke-thru device.

The Evolution Series Poke-Thru Device is a recessed unit that provides the maximum power, communications and A/V services at the workstation. The 6AT Series has 3-gangs of capacity that accommodates power, communications and A/V in each location. The Evolution Series has been designed to accept Legrand AVIP Series, Extron® Electronics MAAP and AAP Series devices. The 6AT Series is available in a prewired option with (2) 20A prewired receptacles, a prewired A/V version that comes with (1) 20A prewired and an unwired option that allows for maximum configurability.

- A** Accepts both Wiremold® open system adapters and Ortronics® TracJack® and Series II modular inserts.
- B** Each receptacle can be wired as a separate circuit and can be wired as a standard or isolated ground device.
- C** 6AT Series requires a 6" (162mm) core hole. Minimum hole diameter 6" (152mm).
- D** Service head diameter 7¼" (184mm). Total depth 16¾" (425mm).
- E** All-metal covers with spring loaded sliding egress doors.
- F** Available in 2-hour and 3-hour fire rated versions.



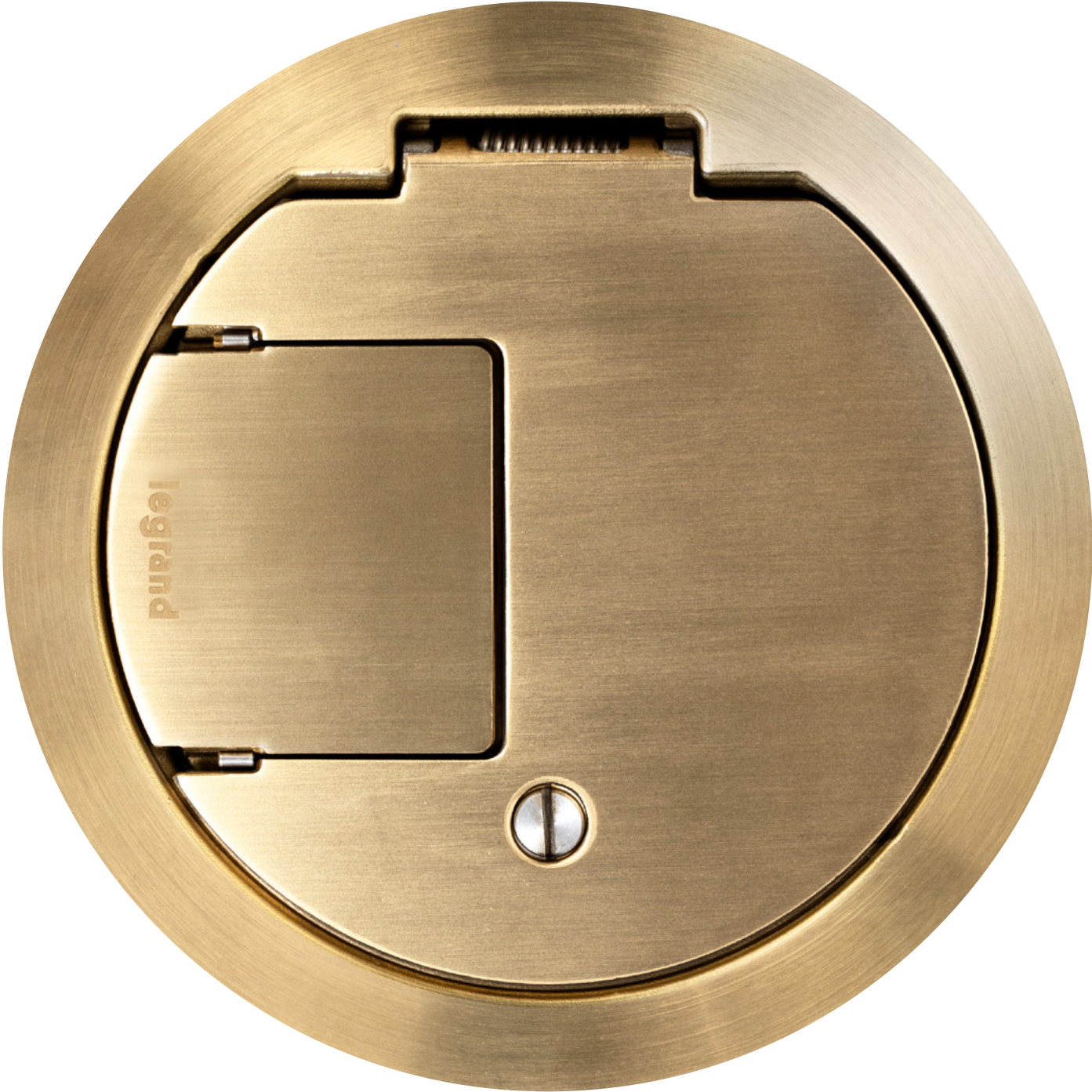
 **legrand**®







6" Evolution™ Series Heavy Duty Poke-Thru Cover





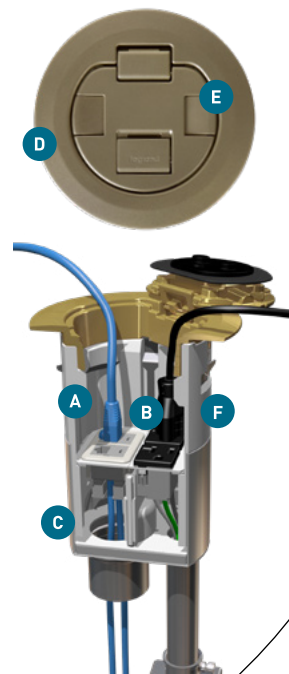


## 4AT EVOLUTION™ SERIES

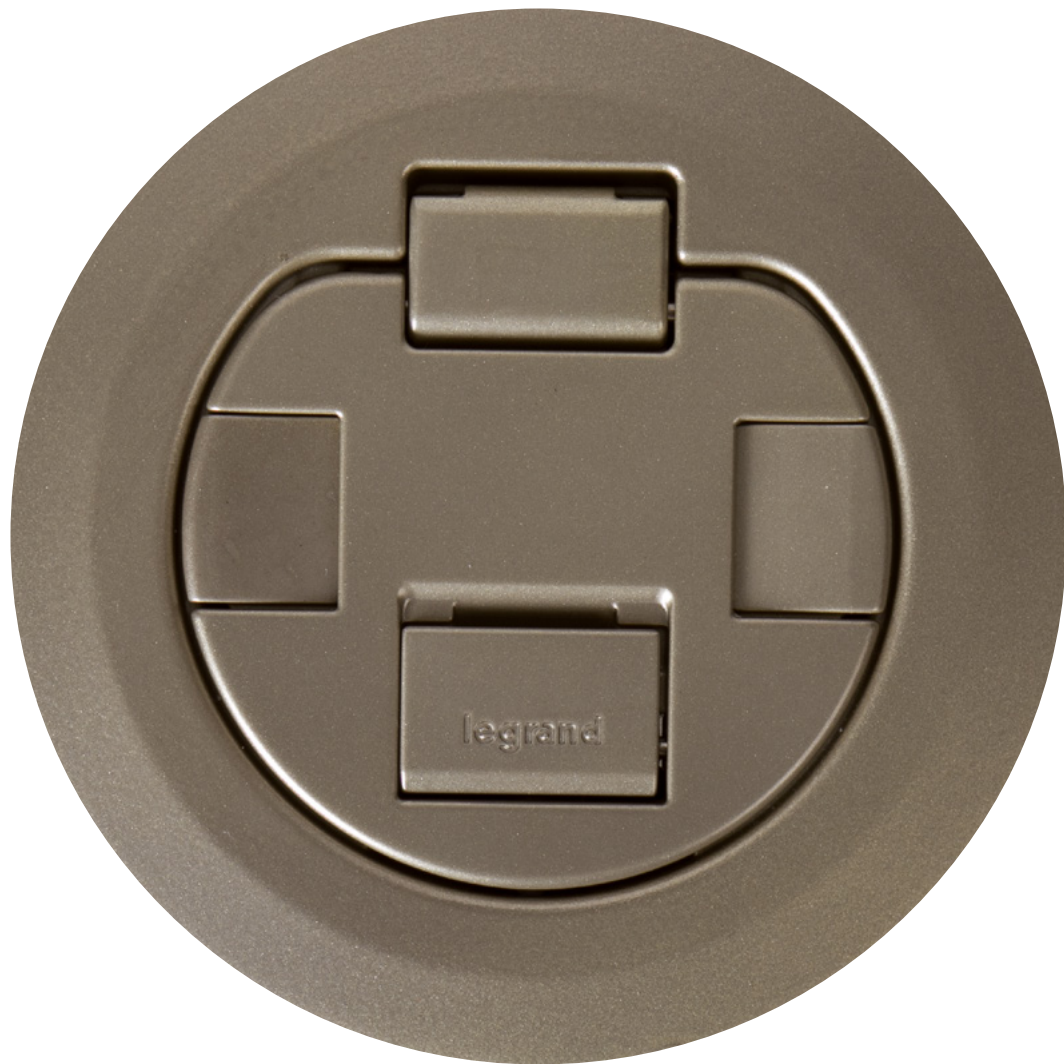
### Perfectly sized for smaller capacity needs.

Offered in a convenient 2-gang version to accommodate power, communications and A/V needs for any location, the 4AT Series is discreet and ideal for smaller capacity applications.

- A** Accepts both Wiremold® open system adapters and Ortronics® TracJack® and Series II modular inserts.
- B** Each receptacle can be wired as a separate circuit and can be wired as a standard or isolated ground device.
- C** 4AT Series requires a 4" (102mm) core hole.
- D** Service head diameter 5 ½" (140mm).
- E** Total depth 18 9/16" (472mm).
- F** All-metal covers with spring loaded sliding egress doors.

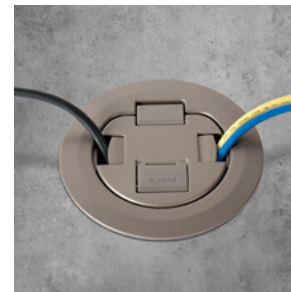
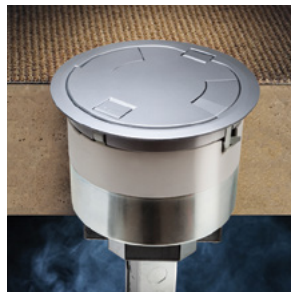


 **legrand**®





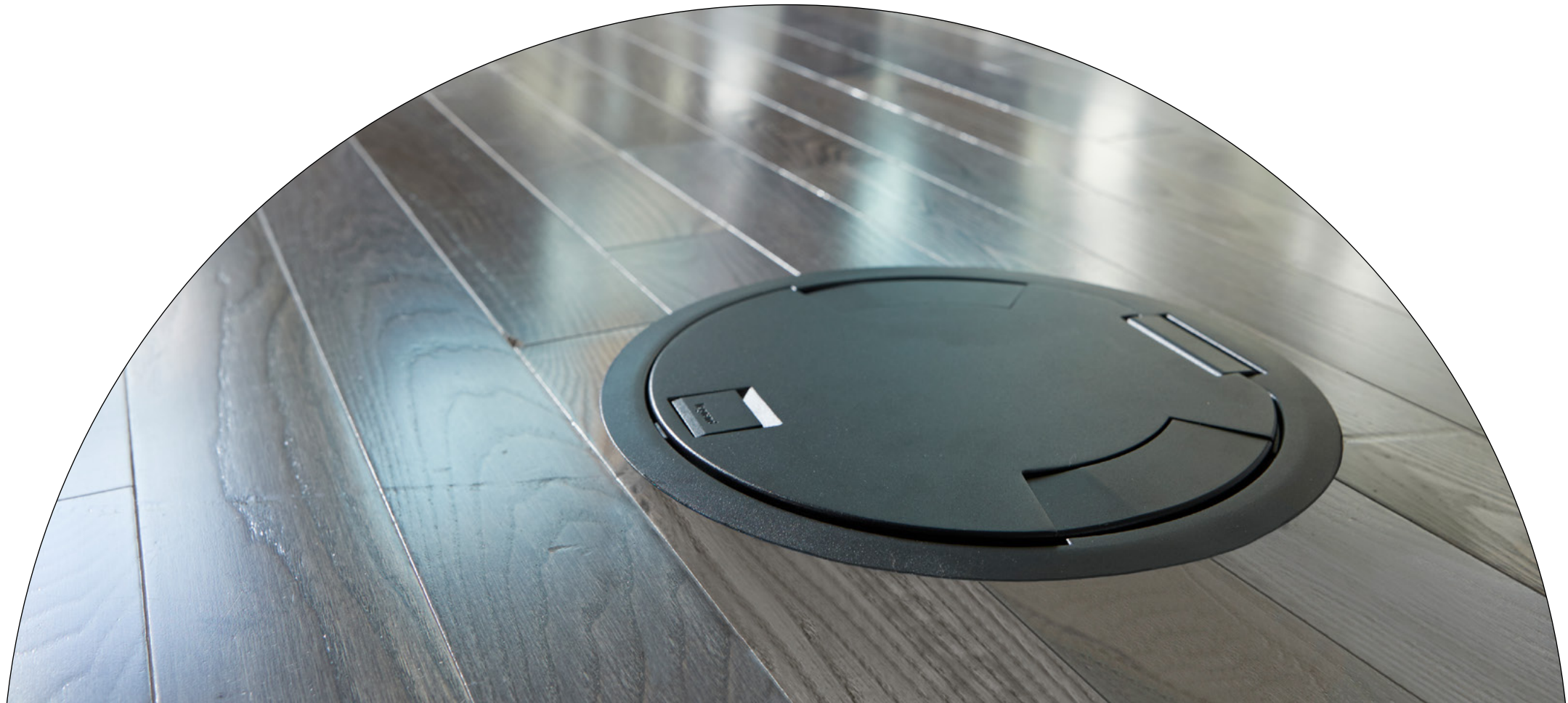
# ADVANCED POKE-THRU DEVICE TECHNOLOGY



- Poke-thru devices enable wiring and cabling to be located virtually anywhere, using core-drilled openings while also maintaining the fire rating of the slab.
- Exclusive TopGuard™ protection meets and exceeds UL scrub water exclusion requirements by preventing water, dirt and debris from entering power and communications compartments.
- Power, communications and A/V devices are protected by slide cover technology which remains closed when not in use.
- Feature quick and easy “step-on-it” installation without the need for additional fasteners or a second installer.
- Suitable for 1-, 1½- and 2-hour rated floor assemblies and for use in air handling spaces.
- Trim flanges are beveled so these devices meet ADA Accessibility Guidelines for changes in surface levels.



[WWW.LEGRAND.US/EVOLUTION](http://WWW.LEGRAND.US/EVOLUTION)



designed to be better.™

[WWW.LEGRAND.US/EVOLUTION](http://WWW.LEGRAND.US/EVOLUTION)

Visit for specifications & configuration tools



**Electrical Wiring Systems**

60 Woodlawn Street  
West Hartford, CT 06110  
1.877.BY.LEGRAND (295.3472)  
[www.legrand.us](http://www.legrand.us)

Canada  
1.800.723.5175; 905.738.9195  
[www.legrand.ca](http://www.legrand.ca)