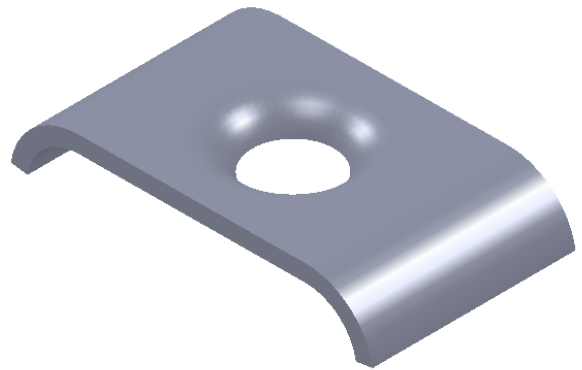
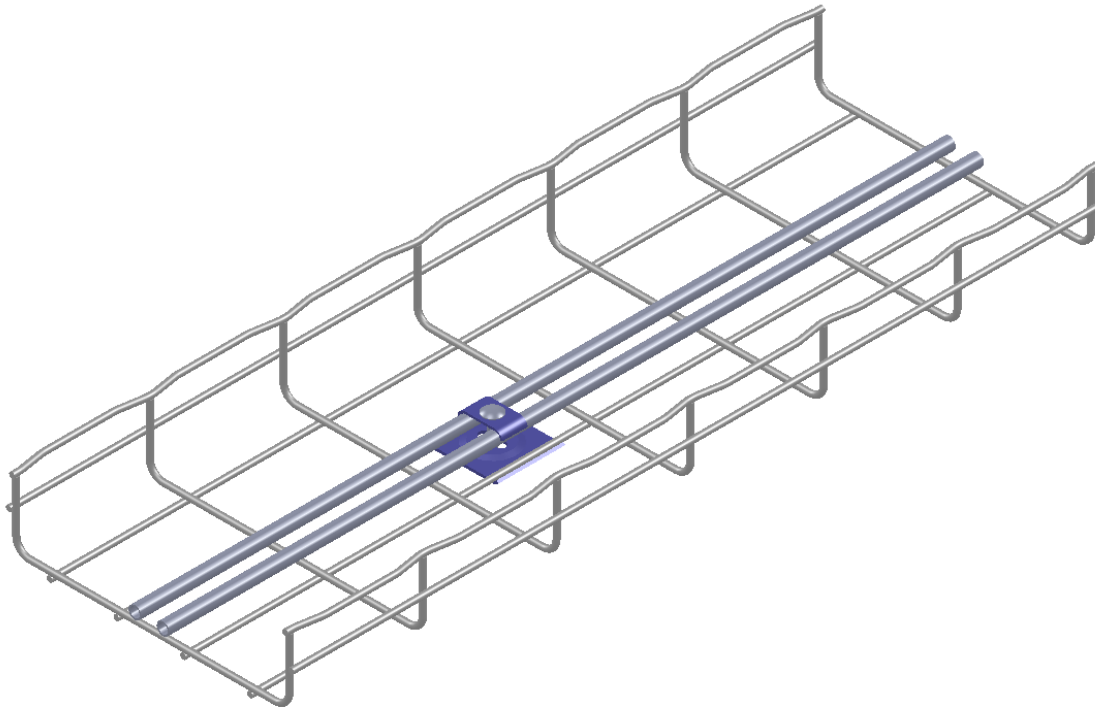


PART NUMBER	TUBE CONFIGURATION
YC214KITIN316	(2) 1/4" DIA. TUBES
YC238KITIN316	(2) 3/8" DIA. TUBES
YC212KITIN316	(2) 1/2" DIA. TUBES
YC414KITIN316	(4) 1/4" DIA. TUBES
YC438KITIN316	(4) 3/8" DIA. TUBES



YC238IN316



NOTES:

1. SECURELY FASTENS TUBING WITH A POSITIVE CLAMPING ACTION AND SMOOTH CONTACT SURFACES.
2. FINISHES AVAILABLE:
 - S.S. 316
3. PACKAGED QTY: 10 KITS
4. ONE KIT INCLUDES: 1 = YCxxxin316 (YOKE CLAMP)
 1 = CE40IN316 (LARGE WASHER)
 1 = BN1/4IN316 (BOLT & NUT)

This drawing is the property of **CABLOFIL, INC.**

Cannot be copied or transferred to a third party without written authorization

DRAWN	DWK	DATE	7/16/08	CHECKED	-	DATE	-	APP'D	-	DATE	-
YCxxxKITIN316 YOKE CLAMP KIT (securing tubing to Wire Mesh Cable Tray)								CABLOFIL® CABCS1042		SCALE:	<div>-</div> <div>-</div> <div>-</div> <div>-</div> <div>-</div> <div>A</div>