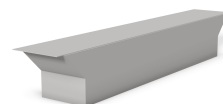




## Wiremold

# REVIT CONTENT GUIDE

**Manufacturer:** Legrand | Wiremold  
**File:** Cabinet\_Connector-Wallduct-Wiremold-Flanged.rfa  
**Type Catalog:** Not Applicable  
**Rendering file:** Not Applicable  
**Schedule file:** Schedule - Wallduct.rvt



## Instance Properties

Construction	
Has Flush Cover	<input type="checkbox"/>
Has Surface Cover	<input checked="" type="checkbox"/>
Dimension	
Availability	Available
Depth	6.000
Depth Desired	6.000
Graphics	
Has Snap Locations	<input checked="" type="checkbox"/>
Identity Data	
Equipment Number	
Part Description	Wallduct Flanged Cabinet Connector with Surface Cover, 30 In. Wide, 6 In. Deep
Part Number	WD30W600-FCCS

## Type Properties

The family contains 5 types. These are a few of the types:

- 18" Width (Values for this type are shown below)
- 10" Width
- 24" Width
- 30" Width

Dimension	
Height	6.000
Width	30.000

Identity Data	
Copyright	Copyright © Legrand   Wiremold
Date Last Modified	March 15, 2013
Description	See Part Description
Equipment Abbreviation	WD
Family Version	1.0.0
Manufacturer	Legrand   Wiremold
Model	See Part Number
Model Disclaimer	For More Information, Contact Legrand   Wiremold
Original Creation Date	March 15, 2013
Product Documentation Link	<a href="http://www.legrand.us/~ /media/8CB16387C07D4956AFD024003BE1EEDD.ashx">http://www.legrand.us/~ /media/8CB16387C07D4956AFD024003BE1EEDD.ashx</a>
Product Page URL	<a href="http://www.legrand.us/wiremold/infloor-ducts/ducts/wallduct-medical-raceway-system.aspx#.Uzv5gcqO424">http://www.legrand.us/wiremold/infloor-ducts/ducts/wallduct-medical-raceway-system.aspx#.Uzv5gcqO424</a>
Provide Feedback	<a href="https://www.surveymonkey.com/s/BDXT5XT">https://www.surveymonkey.com/s/BDXT5XT</a>
URL	<a href="http://www.legrand.us/wiremold.aspx">http://www.legrand.us/wiremold.aspx</a>
Materials	
Product Material	Steel - Wiremold

Half tone text in the property tables indicates that the value is locked from editing.

## Loading and Placing into the Project:

One “Electrical Fixtures” family is supplied and can be loaded into a Revit project through all traditional methods. The cabinet connector requires a face to be placed within the project (i.e. duct). Also, ensure that the visibility settings within the project are modified to have the Electrical Fixtures category visible.

## Project Behavior:

Within the type and instance properties dialogues, the user will find useful information for scheduling purposes such as Width, Depth and other unique properties of the model. In “Identity Data” the user will find information specific to Legrand | Wiremold and the model, i.e.: family revision information, Legrand | Wiremold copyright information, part description, product URL and other specific data. \*See scheduling description below.

The user has the option to input a depth size, which when the inputted size doesn't match a real product, the closest appropriate size will be used. When an inaccurate value is inputted, an error will be shown in the availability parameter stating the available depth sizes.

This model should be placed on the end of a Wallduct duct by snapping to the set snap locations. When selecting a cover option, note that surface covers are used when the duct body sits on top of the wall and the flush cover is for when the top of the cover is flush with the surface of the wall, floor or ceiling.

## Instance Parameters:

In the “Instance Parameters”, the user has the following options to modify:

- Equipment Number – For tagging each placed instance.
- Has Snap Locations – Toggles the visibility of the snap location crosshairs.
- Has Flush Cover – For toggling between a Flush or Surface Cover.
- Depth Desired – For inputting a desired Depth value.

## Type Parameters:

Each type represents a manufactured product. Therefore, the type parameters should not be modified by the user for standard configuration. Please note:

- Product Documentation Link – Directs a webpage to the products online listing.
- Equipment Abbreviation – For filtering schedules. \*See scheduling description below.

## Visibility:

For best performance, all model geometry is turned off in Plan View and represented through masking regions and symbolic/model lines that update automatically when a user changes types. For most families the viewing range will have to be lowered since no geometry is visible above the reference level.

## Rendering:

When the family file is loaded into the project, standard Legrand | Wiremold materials are imported. These may be modified, though ensure that the modification selection matches an actual manufacturer supplied option.

## **Schedule Creation:**

Legrand | Wiremold products may be scheduled utilizing the schedule view in the given project file. Select and copy (Ctrl-C) the schedule from the sheet view and paste it (Ctrl-V) into a sheet in your project. The schedule filters are set to look for only those units designated with Manufacturer as “Legrand | Wiremold” and Equipment Abbreviation as “WD”. The schedules contain special functionality for displaying the configured order numbers of the different selected types.