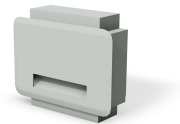




REVIT CONTENT GUIDE

Manufacturer:	Wiremold
File:	Wall_Box-Evolution_Series-Wiremold-2_4Gang.rfa
Type Catalog:	Not Applicable
Rendering file:	Not Applicable
Schedule file:	Schedule - Wall_Box-Evolution_Series-Wiremold-2_4Gang.rvt



Instance Properties

Construction	
Device Module 1	EFS-DB 2-Gang, 1x 2" KO, 1x 0.75", 0.75-1.25" KO
Device Module 2	EFS-DB 2-Gang, 1x 2" KO, 1x 0.75", 0.75-1.25" KO
Graphics	
Has Cover	<input checked="" type="checkbox"/>
Has Snap Location	<input checked="" type="checkbox"/>
Identity Data	
Equipment Number	
Part Description	2 - Gang Wall Box
Part Number	EFSB2

Type Properties

The family contains the following 2 types:
4 Gang (Values for this type are shown below)
2 Gang

Electrical	
Apparent Load	0.00 VA
Load Classification	Other
Voltage	0.00 V
Dimension	
Depth	4.1525000
Height	8.7500000
Width	12.9822919

Identity Data	
Copyright	Copyright © Wiremold
Date Last Modified	July 24, 2013
Description	See Part Description
Equipment Abbreviation	FB
Family Version	1.0.0
Manufacturer	Wiremold
Model	See Part Number
Model Disclaimer	For More Information, Contact Wiremold
Original Creation Date	July 24, 2013
Product Documentation Link	http://www.legrand.us/~ /media/848AA9A146BB43C4A86D1BAAEA589018.ashx
Product Page URL	http://www.legrand.us/wiremold/wall-boxes/evolution-series-wall-box/efsb2-evolution-2-gang-wall-box.aspx
Provide Feedback	https://www.surveymonkey.com/s/BDXT5XT
URL	http://www.legrand.us/wiremold
Materials	
Product Material	Aluminum - Wiremold

Half-tone text in the property tables indicates that the value is locked from editing.

Loading and Placing into the Project:

One "Electrical Fixtures" family is supplied and can be loaded into a Revit project through all traditional methods. The Wall Box requires a work-plane host to be placed within the project (i.e. wall). Also, ensure that the visibility settings within the project are modified to have the Electrical Fixtures category visible. The box has the ability to cut its host to aid in viewing interior components.

Project Behavior:

Within the type and instance properties dialogues, the user will find useful information for scheduling purposes such as Height, Width, Depth and other unique properties of the model. In "Identity Data" the user will find information specific to Wiremold and the model, i.e.: family revision information, Legrand | Wiremold copyright information, part description, product URL and other specific data. *See scheduling description below.

The model is placed on the workplane of a wall. Once placed, the user can utilize the included instance parameters to configure the product, turn its cover visibility on and off, and select the cover type. Snap locations are provided to aid in device plate placement, but may be turned off if not needed.

There are electrical and conduit connectors present on the model. With the electrical connector, the floor box may be added to an electrical circuit present in the project. Conduit may be easily connected or drawn from the unit itself, using the connections present. The connections are the nominal sizes included on the model.

The base model's "Part Number" parameter will change based on selection of the Family Type. The part numbers and most relevant information for the Device Modules are included in their Type names.

Instance Parameters:

In the "Instance Parameters", the user has the following options to modify:

- Has Cover - Turns cover visibility on/off
- Has Snap Locations - Allows for changing the visibility of the snap locations on the model
- Device Module 1 - Selection for first module in the product: storage, device, single gang, double gang, etc.
- Device Module 2 - Selection for the second module in the product: storage, device, single gang, double gang, etc.

Type Parameters:

Each type represents a manufactured product. Therefore, the type parameters should not be modified by the user for standard configuration. Please note:

- Product Documentation Link – Directs a webpage to the products online listing.
- Equipment Abbreviation – For filtering schedules. *See scheduling description below.
- Product Material - Represents the construction of the product
- Electrical parameters (Voltage, Apparent Load) are included in the family

Visibility:

For best performance, all model geometry is turned off in Plan View and represented through masking regions and symbolic/model lines that update automatically when a user changes view properties.

Rendering:

When the family file is loaded into the project, standard Legrand | Wiremold materials are imported. These may be modified, though ensure that the modification selection matches an actual manufacturer supplied option.

Schedule Creation

Legrand | Wiremold products may be scheduled utilizing the schedule view in the given project file. Select and copy (Ctrl-C) the schedule from the sheet view and paste it (Ctrl-V) into a sheet in your project. The schedule filters are set to look for only those units designated with Manufacturer as "Legrand | Wiremold" and Equipment Abbreviation as "FB". The schedules contain special functionality for displaying the configured order numbers of the different selected types.