

SURFACE WIRING

PLUGMOLD®

Multi-Outlet Strips

Power where you need it.

Plugmold multi-outlet strips deliver power where you need it. Simply mount, plug into an existing power source, and you're done. Great for the home workshop. Perfect for "invisible" outlets beneath a kitchen cabinet. The easy way to add 6 - 10 outlets.



TOOLS YOU'LL NEED:

- Tape measure
- Phillips head screwdriver

PLUGMOLD parts checklist:

HARD-WIRED STRIPS*



V20GB306+ Ivory Multi-outlet Strip
36" L x 1 9/32" W x 3/4" H
914.4mm L x 32.5mm W x 19.1mm H
6 outlets.

V20GB506+ Ivory Multi-outlet Strip
60" L x 1 9/32" W x 3/4" H
1542mm L x 32.5mm W x 19.1mm H
10 outlets.

CORD-ENDED STRIPS



PM36C Ivory Multi-outlet Strip
40" L x 1 9/32" W x 3/4" H
1016mm L x 32.5mm W x 19.1mm H
6 outlets and circuit breaker. 6' cord.

PM48C Ivory Multi-outlet Strip
52" L x 1 9/32" W x 3/4" H
1320mm L x 32.5mm W x 19.1mm H
8 outlets and circuit breaker. 6' cord.

*Can be fed by Wiremold metal raceway.

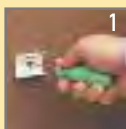
HARD-WIRED KITS



PMKW306, white
PMKB306, black
PMKS306, stainless
PMKV306, ivory

Each of these kits combines a 36"6 outlet strip, a flush plate adaptor, an end feed fitting, and accessory pack.

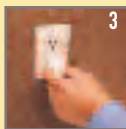
Easy to install cord-ended strips:



Mount bracket to wall.



Attach Plugmold strip.



Plug it in.