

SURFACE WIRING

METAL RACEWAY

Extra Durable Surface Wiring

Add or extend power, phone, or data lines.

Wiremold Metal Raceway is the raceway of choice for heavy-duty applications including brick walls, concrete, or garages. Available in standard and high capacity to accommodate most uses. Makes running power a snap wherever you need it. Paintable to accent your décor.

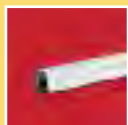


60" L x 3/4" W x 1 1/32" H
1542mm L x 19.1mm W x 13.5mm H

TOOLS YOU'LL NEED:

- Standard and long-nose pliers
- Standard and Phillips head screwdrivers
- Tape measure • Wire snips
- Fine tooth hacksaw • Metal file

METAL RACEWAY parts checklist:



Wire Channel

Carries wire from starter box to downstream outlet boxes, switches, and fixtures.
BW11(5') 700WH+(10') White
B1(5') V500+(10') Ivory



Circular Fan Box

Bring power to fans and other round based fixtures. Maximum fixture weight 50 lbs.
BW4F White, B4F V5738AF Ivory



T-Fitting

For installations requiring 3-way branching including 90° angle.
BW16 White, B16 Ivory



Starter Box

Fits over existing single-gang outlet box to feed power as the starting point for your system (1" deep).
BW5 White, B5 V5751 Ivory



Flat Elbow

For making a left or right 90° turn on a flat surface.
BW6 White, B6 Ivory



Fitting

For transitioning from metal raceway to 1/2" conduit or from any steel box with 1/2" knockout.
BW17 White, B17 Ivory



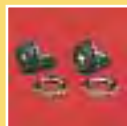
Outlet Box

For most residential wiring devices (1" deep).
BW2 White, B2 V5748S Ivory



Inside Elbow

For making a 90° turn around an inside corner from wall-to-wall or wall-to-ceiling.
BW7 White, B7 Ivory



1/2" Box Connector

For connecting raceway to conduit boxes with 1/2" knockout.
B81



Deep Outlet Box

For standard or oversized switches or outlets – dimmers or GFCIs (1 3/8" deep).
BW3 White, B3 V5747 Ivory



Outside Elbow

For making a 90° turn around an outside corner.
BW8 White, B8 Ivory



2-Gang Outlet Box

Expanded capacity for extra outlets or outlet/switch combinations (1 3/8" deep).
BW32 White, B32 V5747-2 Ivory



Accessory Pack

Mounting components for wire channel, including metal clips, straps, and fittings.
BW9-10-11 White
B9-10-11 Ivory



Extra Deep Outlet Box

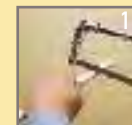
For oversized wiring devices such as fan speed controls, dimmer switches, and GFCIs (1 3/4" deep).
BW35 White, B35 V5748 Ivory



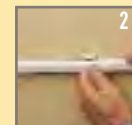
Twist Elbow

For making a 90° turn around an outside corner while changing channel orientation.
BW13-14 White, B13-14 Ivory

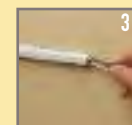
Easy to install:



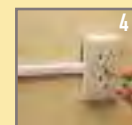
After installing starter box, cut metal raceway to size.



Mount raceway to wall using clips/couplings.



Fish wire through raceway. Connect fittings and devices as required.



Attach covers and install faceplates.