

Low Voltage Brackets



SDV2B

AC1009-01, PLV1R or SLV1R

AC1009-12

CONTRACTOR-INSPIRED FEATURES FOR EASY INSTALLATION.

The complete line of low voltage brackets from Legrand offer sturdy construction for dependable results. The line incorporates On-Q's knowledge of low voltage applications alongside Pass and Seymour's long history of box experience. The brackets' shatter-resistant, durable plastic design stands up to the rigors of new construction or retains its shape for ease of alignment during retrofit installation.



Quick/Click® technology mounts devices in a single tap.

Timesaving Quick/Click® technology mounts devices in a single tap, and metal swing brackets hold retrofit applications in place to combat drywall pull-outs.

Other contractor friendly features include:

- A 5% larger opening than competitive products to accommodate larger low voltage devices
- Cable tie ports and top openings to make trim out and wiring a breeze
- A height sight feature to accurately align face mount brackets

FEATURES & BENEFITS

- Molded re-enforcement ribs and side-stabilizer tabs minimize racking from irregular drywall openings for sturdy installation and pull-out resistance
- Generous opening accommodates any low voltage device
- Cable-tie ports safely hold cables away from drywall during trim out
- Built-in rectangular cutout template and alignment features ensure accurate placement
- Metal swing brackets mount solidly in retrofit applications and combat pull-outs through drywall
- The Quick/Click® LV Brackets offer single tap technology for secure device mounting and enhanced productivity

Choose the right bracket for your project

New Construction								
Part #	Brand	Description	Gang	Nail	Screw	Face Mount	Wing	Quick/Click®
SLV1R	P&S	1-Gang Nail On LV Bracket with Quick/Click®	1	•				•
AC1009-01	On-Q	1-Gang Nail On LV Bracket	1	•				
PLV1R	P&S							
SLV1S	P&S	1-Gang Screw On LV Bracket with Quick/Click®	1		•			•
PLV1S	P&S	1-Gang Screw On LV Bracket	1		•			
AC1009-12	On-Q	2-Gang Nail On LV Bracket	2	•		•		
SLV1B	P&S	1-Gang Face Mount LV Bracket with Quick/Click®	1			•		•
AC1009-11	ON-Q	1-Gang Face Mount LV Bracket	1			•		
PLV1B	P&S							
SLV2B	P&S	2-Gang Face Mount LV Bracket with Quick/Click®	2			•		•
AC1009-02	ON-Q	2-Gang Face Mount LV Bracket	2			•		
PLV2B	P&S							
SDV2B	P&S	2-Gang Face Mount Box and LV Bracket with Quick/Click®	2			•		•
PDV2B	P&S	2-Gang Face Mount Box and LV Bracket	2			•		
P100ND	P&S	1-Gang Side Mount LV Bracket	1			•		

Retrofit								
Part #	Brand	Description	Gang	Nail	Screw	Face Mount	Wing	Quick/Click®
SLV1W	P&S	Retrofit 1-Gang Metal Wing LV Bracket with Quick/Click®	1				•	•
AC1010-01	On-Q	Retrofit 1-Gang Metal Wing LV Bracket	1				•	
PLV1W	P&S							
SLV2W	P&S	Retrofit 2-Gang Metal Wing LV Bracket with Quick/Click®	2				•	•
AC1010-02	On-Q	Retrofit 2-Gang Metal Wing LV Bracket	2				•	
PLV2W	P&S							
SLV3W	P&S	Retrofit 3-Gang Metal Wing LV Bracket with Quick/Click®	3				•	•
AC1010-03	On-Q	Retrofit 3-Gang Metal Wing LV Bracket	3				•	
PLV3W	P&S							
P100WD	P&S	1 Gang Clip On LV Bracket Extender	1				•	

Dividers and Extenders								
Part #	Brand	Description	Gang	Nail	Screw	Face Mount	Wing	Quick/Click®
LVDIV1	P&S	LV Box Divider (12 Pack)						
EXT1		1 Gang 1/4" Box Extender (10 Pack)						
EXT2		2 Gang 1/4" Box Extender (10 Pack)						



PLV1S or SLV1S



AC1009-11, PLV1B or SLV1B



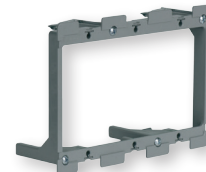
AC1009-02, PLV2B or SLV2B



AC1010-01, PLV1W or SLV1W



AC1010-02, PLV2W or SLV2W



AC1010-03, PLV3W or SLV3W