



POCKET PRO



IPEX
by aliaxis

ELECTRICAL SYSTEMS

Scepter[®]
Rigid PVC Conduit & Fittings

SceptaCon[™]
Trenchless Raceways Systems

Sceptalight[™]
Nonmetallic Light Fixtures

KWIKON[®]
Electrical Nonmetallic Fittings

Scepter[®] **JBox**[™]
The Next Generation Junction Box

KWIKFLEX[®]
NMLT Conduit & Fittings

EPR
Conduit Repair Kits

SUPER DUCT[®]
Power & Communication Duct

INEXO[®]
The ICF Box

Type Designation	UL Underwriters Laboratories Inc (UL 50 and UL 508)
1	Indoor use primarily to provide protection against contact with the enclosed equipment and against a limited amount of falling dirt.
2	Indoor use to provide a degree of protection against limited amounts of falling water and dirt.
3	Outdoor use to provide a degree of protection against windblown rain; undamaged by the formation of ice on the enclosure.
4	Either indoor or outdoor use to provide a degree of protection against falling rain, splashing water, and hose-directed water; undamaged by the formation of ice on the enclosure.
4X	Either indoor or outdoor use to provide a degree of protection against falling rain, splashing water, and hose-directed water; undamaged by the formation of ice on the enclosure; resists corrosion.
6P	Indoor or outdoor use primarily to provide a degree of protection against hose-directed water, the entry of water during prolonged submersion at a limited depth, and be undamaged by the formation of ice on the enclosure.
12	Indoor use to provide a degree of protection against dust, dirt, fiber flyings, dripping water, and external condensation of noncorrosive liquids.
13	Indoor use to provide a degree of protection and spraying of water, oil, and noncorrosive liquids.

This material is reproduced with permission from Underwriters Laboratories Inc. Standard for Safety for Cabinets and Boxes, UL 50, Copyright 1988 and Industrial Control Equipment, UL 508, Copyright 1994 by Underwriters Laboratories Inc.

Underwriters Laboratories Inc. (UL) shall not be responsible to anyone for the use of or reliance upon a UL Standard by anyone. UL shall not incur any obligation or liability for damages, including consequential damages, arising out of or in connection with the use, interpretation of, or reliance upon a UL Standard.

Introduction	1
Applications	2
Advantages	3
Scepter® Rigid PVC Sch. 40 & 80 Conduit	7
Installation	8
Expansion and Contraction	10
Conduit Dimensions	15
Scepter® PVC Conduit Fittings	19
Fittings	20
Cover Plates	45
Weatherproof Covers	46
Gang Boxes	48
Standard Junction Boxes	51
Floor Box	53
Floor Box Cover Plates	54
Conduit Cements & Primer	55
Scepter JBox	57
EPR Conduit Repair Kit	62
Sceptralight™ Nonmetallic Light Fixtures	63
LED	66
Compact Fluorescent	67
Incandescent	68
Options	69
Accessories	74
Kwikflex®	75
Nonmetallic Liquidtight Flexible Conduit	76
Nonmetallic Liquidtight Fittings	77
Kwikon® ENT	79
ENT Tubing	82
Couplings/Connectors	83
Slab Boxes	86
ENT Wall Boxes	88
Short Form Sample Specifications	90
INEXO® ICF Boxes	93
Super Duct®	95
Advantages	96
Engineering Data	97
Installation	99
Telephone Duct	102
Power & Communication Duct	103
Spacers	104
Sceptacon™ Trenchless Raceway	107



Pocket Pro provides the most comprehensive information about PVC systems – from basic raw material to installation characteristics of the finished product. Written with the engineer, contractor and distributor in mind, it is based on laboratory test results and IPEX's many years of field experience.

At IPEX, we have been extruding PVC conduit and molding fittings since 1951. We formulate our own compounds, maintain strict quality control during production, and offer one of the most comprehensive lines of nonmetallic electrical products throughout North America.

More important, our commitment to customers extends beyond the sale. Quality control and thorough jobsite field reports have earned IPEX a reputation for product quality and service excellence.

Engineers, electricians, contractors, specifiers and utilities have realized for many years the advantages of PVC. Today, IPEX electrical systems include Scepter® PVC conduit and fittings, INEXO® ICF boxes, Kwikon® ENT fittings, SceptaCon™ trenchless raceway systems, Sceptalight™ nonmetallic light fixtures, Scepter® JBox™ and Super Duct® power and communication ducts. These brands are the number-one choice for power, communication and data needs. Whether exposed, concealed in walls, encased in concrete, or directly buried, IPEX electrical products are preferred *For The Long Run*.

Only when you specify IPEX branded products by name are you guaranteed our commitment to excellence.

Applications

Typical industrial/commercial and residential applications for IPEX electrical systems include:

- Mines
- Steel mills
- Food processing plants
- Subways
- Bridges and tunnels
- Agricultural, dairy, hog, cattle, chicken, etc.
- Marinas
- Sewage treatment plants
- Pulp & paper industries
- Street and highway lighting
- Car washes
- Parking garages
- Residential applications
- Fish plants
- Water treatment plants
- Airports
- Utilities
- Cable
- Communications



Labor Savings

Compared to metal, PVC products reduce labor on a typical installation by up to two-thirds. The reason?

PVC is easy to work with. It can also be cut and joined without vises, cutters, threading equipment and reamers associated with metal conduit.

Lightweight Conduit

Scepter rigid PVC conduit is one-half the weight of aluminum and one-sixth the weight of steel. As a result, handling and installation are easier and faster, reducing labor costs.

Easy Joining

Solvent cementing is all that is required, eliminating the need for power-threading machines, pipe vises and cutting equipment. A hacksaw or carpenter's saw is the only equipment required.

Strength

Scepter rigid PVC conduit offers both high impact and high tensile strength, even in cold temperatures. They exceed all UL and NEMA standards.

Rigid Conduit Sch. 40 Size (in.)	UL Impact @ 73°F (ft.lbs.)
1/2	50
3/4	80
1	100
1-1/4	120
1-1/2	150
2	190
2-1/2	210
3 – 6	220

Easy Wire Pulls

PVC's exceptionally smooth interior surface greatly reduces the amount of friction while pulling conductors/wires through long runs, even with 90° bends. A large pull-rope and wire-pulling compound should be used when pulling all conductors and wires.

Noncorroding

PVC is immune to damage from naturally corrosive soil conditions, as well as electro-chemical and galvanic corrosion. This ensures lower maintenance costs and longer performance *For The Long Run*.



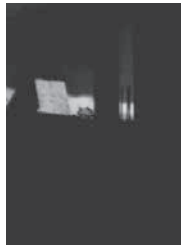
Nonconducting

IPEX electrical systems are nonsparking and non-conducting, thereby eliminating the most dangerous 'second point of contact' and 'phase to ground' faults. The use of a separate grounding conductor provides complete and positive grounding for the whole system.



Long Life

Scepter rigid PVC conduit and fittings retain their original properties after years of exposure to direct sunlight, heat and weather. In addition, resistance to fungi, bacterial action, rodents, termites and corrosive agents ensures a long, trouble-free life for PVC conduit installed indoors or outdoors.



Chemical Resistance

One of the greatest benefits of PVC is its excellent chemical resistance. It resists attack by acids, alkalis, salt solutions and many other types of chemicals.

For more information on PVC and chemical resistance, refer to the IPEX Chemical Resistance Guide.

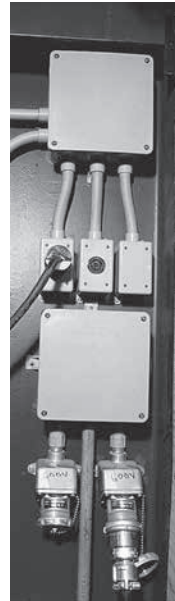


Concrete Tight

Scepter rigid PVC conduit systems are designed and engineered to be concrete tight in all weather conditions.

Fire Resistant

As a building material PVC offers outstanding fire performance characteristics. PVC will not burn unless an external flame source is applied, and will not sustain ignition once the flame source is removed. PVC has a flash ignition temperature of 850°F.



Suitable for Direct Burial

PVC is suitable for direct burial and requires no extra protection when installed in accordance with local inspection authority guidelines. The usual care regarding trenches and backfilling should be respected.

One-Source Specification

IPEX electrical systems offer a full range of PVC fittings and accessories. As a result, one-material specifying is possible.

Quality Control

In addition to our rigorous quality control testing, IPEX product carries third-party certification by UL and CSA.

Bookmark Our Website

www.ipexna.com



PRODUCT INFO,
TECHNICAL
DOCUMENTS,
ON-SITE TRAINING
& MUCH MORE ...



OUR ELECTRICAL
CATALOG & SCEPTER
ELECTRICAL CATALOG
INCLUDE MORE
INFORMATION ON:

- Conduit & Fittings
- Light Fixtures
- ENT Tubing & Fittings
- Duct
- Trenchless Raceways
- and much more ...

available at www.ipexna.com



This section provides comprehensive information and guidelines for the design and installation of PVC Schedule 40 & 80 conduit and fittings. Always consult the authority having jurisdiction for specific installation procedures.



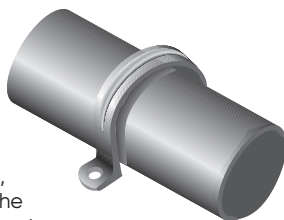
UL Listed-UL651
Sunlight Resistant
Rated for use with 90°C
conductors



NEMA TC-2
Corps. of Engineers Spec.
CE 303:01
Military Spec, Federal Spec.
WC 09A

Support

Due to PVC's light weight, support spacing is different than that used with metal conduits. Supporting straps should NOT be firmly tightened, to allow for linear movement. The maximum allowable support spacing, as per National Electrical Code Article 352.30 (NEC), is as follows:



Support Spacing For Schedule 40 & 80 Conduit

Nominal Conduit Diameter inches	Maximum Support Spacing feet
1/2	3
3/4	3
1	3
1-1/4	5
1-1/2	5
2	5
2-1/2	6
3	6
3-1/2	7
4	7
5	7
6	8

Maximum Operating Temperature

The National Electrical Code (NEC) permits the use of rigid PVC pipe and fittings in areas where ambient temperatures do not exceed 122°F.

Cutting

Scepter rigid PVC conduit can be easily cut on the jobsite by using a hacksaw, carpenter's saw or PVC conduit cutters. For larger sizes of conduit, the use of a miter box is also recommended to ensure a square cut.



Solvent Cementing

After cutting Scepter rigid PVC conduit, sharp edges or burrs from inside the conduit should be removed with a knife. Thoroughly clean the end of the pipe and inside the fitting with a pipe cleaner. Apply a generous amount of solvent cement to both surfaces; slide together and give a quarter turn to ensure the solvent is spread evenly on the material. Hold together for a few seconds until the joint is made.

Usually the solvent-cemented joint will be strong enough to install immediately. However, in climates with low temperatures or areas with high humidity, extra time may be required before moving the pipe for permanent installation. Solvent cemented joints appear to "set up" instantly, but will take 24 hours to cure properly. After this time, the solvent-cemented joint has completely cured and is waterproof. For extreme cold weather installations, a PVC primer is recommended. IPEX cements and primers are available in quarter-pint, half-pint, pint, quart and gallon containers.

Bending

PVC is a thermoplastic material that, when heated, becomes soft and pliable. As a result, its shape can be altered.

A flameless heat source is recommended to heat the pipe. AN OPEN FLAME SHOULD NOT BE USED. Either an electric unit or an infra-red propane unit is recommended.

The necessary temperature for bending pipe is 260°F. The pipe must be heated evenly over an area approximately ten times the diameter of the pipe before any attempt at bending is made. Bending the pipe when it has not been thoroughly heated will cause the pipe to "kink." With proper care and a little practice, the bend will form easily.

Cooling the pipe with cold air or water will cause "spring back." Allow a few extra degrees of overbending to compensate. Maximum bending radius shall be six times the internal diameter according to NEC.



Using Expansion Joints

It's just as important to know when to use an expansion joint as it is to know how to install it correctly. Expansion joints are required when the temperature change is greater than 25°F. Scepter rigid PVC conduit has a coefficient of linear expansion of 3.6×10^{-4} in./ft./°F. Generally, a 100 ft. run of PVC conduit will undergo a change in length of 3.6 inches for every 100°F temperature change.



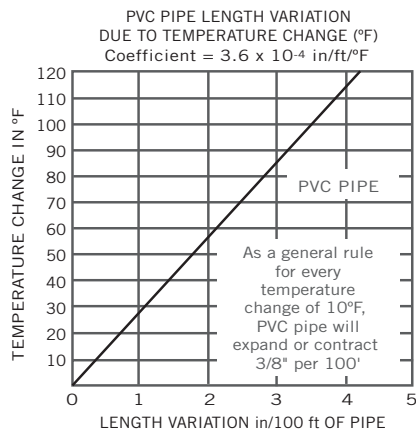
For conduit installed indoors, the range of expansion and contraction can be calculated using the maximum air temperature plus the heat contributed by the conductors inside the conduit and minimum air temperature expected. Expansion joints are not required indoors unless there are widely varying temperatures such as the attic of a building.

Conduit installed outdoors, exposed to direct sunlight, will be considerably hotter than the air temperature. As a guideline in this case, add 27°F to the temperature change. Expansion joints should be installed to allow for the anticipated temperature change.

Expansion Formula

By using the following formula and the chart below, the total expected expansion in a run can be easily determined:

$$\text{Total Expansion (in.)} = \text{length of run (ft.)} \\ \times \text{temperature change (°F)} \times 0.00036$$



Number of Expansion Joints Required

Use the following equation to determine the number of expansion joints needed for a Scepter Rigid PVC Conduit installation:

$$\text{Number of joints} = \frac{\text{total expansion (in)}}{E}$$

E = Expansion joint travel length (4" or 8") depending on diameter.

Always round up to the next whole number.

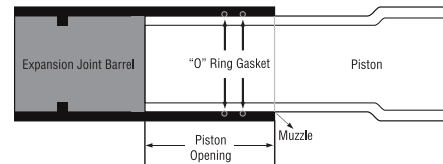
Setting the Piston Opening

The expansion joint must be installed to allow for expansion and contraction of the conduit run. On a cold day, if an expansion joint is installed completely closed with the piston bottomed, there is no room for expansion when the conduit is warmed. If it is installed open to the maximum on a hot day, the expansion joint will pull apart when cooled.

The correct piston opening for any installation condition can be easily determined using the formula below:

$$\text{Piston setting} = \text{Compressed length} + \left(\frac{\text{max. temp.} - \text{installation temp.}}{\text{max. temp.} - \text{min. temp.}} \right) \times E$$

Formula can be used for both metric and imperial measurements.



Size (inches)	Compressed Length (inches)	Travel (inches)
1/2	8.00	4
3/4	8.00	4
1	8.50	4
1-1/4	9.00	4
1-1/2	9.00	4
2	9.25	4
2-1/2	9.25	4
3	14.25	8
3-1/2	14.25	8
4	14.25	8
5	14.25	8
6	14.25	8

Location of Expansion Joints

Proper functioning of an expansion joint depends on three procedures:

1. The correct placement of the expansion joint.
2. The proper installation of Scepter rigid PVC conduit and the expansion joint.
3. The proper placement and fastening of support straps.

One Expansion Joint

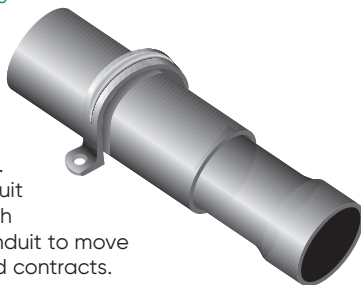
Figure 1

If only one expansion joint is needed between two boxes, the barrel of the joint should be rigidly fastened close to the first box. Scepter rigid PVC conduit is then loosely supported with straps, allowing the conduit to move freely as it expands and contracts.

Two Expansion Joints

Figure 2

If two expansion joints are needed, the joints are firmly fastened back to back at the center of the run. Scepter rigid PVC conduit is loosely supported with straps, allowing the conduit to move freely as it expands and contracts.



Two Expansion Joints (Alternative)

Figure 3

Alternatively, the center of the run and the two expansion joints (located at the boxes) should be rigidly fastened. All other support straps should be loosely fastened.

Three or More Expansion Joints

Figure 4

If more than two joints are needed in a very long run, they should be put in a series, one after the other. Each barrel must be rigidly fastened while conduit is loosely supported with straps allowing conduit to move freely as it expands and contracts. When installed in a series, each section acts independently of the other. Spacing of conduit supports must be in accordance with the NEC Article 352.30.

Figure 1

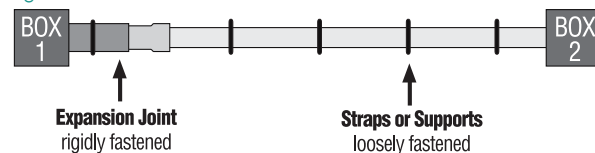


Figure 2

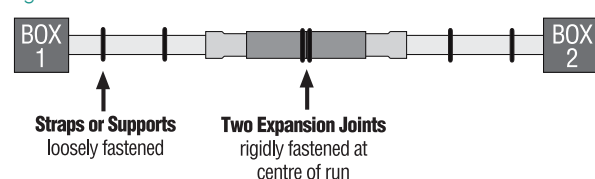


Figure 3

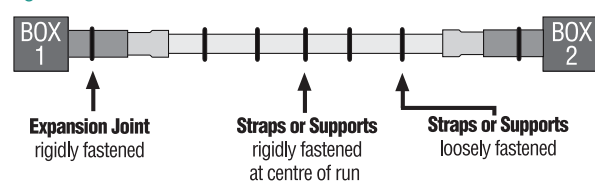
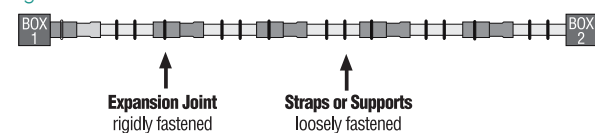


Figure 4



Installation of Expansion Joints

Installation recommendations:

- Expansion joints should be mounted so the piston can travel in a straight line in the barrel. If the alignment is not straight, the piston will bind, preventing the joint from working correctly.
- The expansion joint barrel should be clamped tight, but the conduit mounted loose enough in its hangers to allow for movement as it expands and contracts.
- Scepter nonmetallic straps are correctly sized and designed for proper support, and must be used to secure the conduit.
- When expansion joints are used in a vertical position, the piston should be in a downward position so dirt cannot deposit between the barrel and piston at the muzzle of the expansion joints.

WARNING:

Common Mistakes

The most common mistakes are neglecting to use expansion joints or not using enough expansion joints. It is more cost effective to use more expansion joints than needed, rather than too few. It is difficult to correct the problem after conductors are installed and in service.

Another common mistake is to tighten the support straps too firmly. This will not allow for the proper expansion and contraction of rigid PVC conduit.

Installation of the One Piece Expansion Joint (OPEJ)

1. Solvent cement the PVC conduit into the conduit hub of the OPEJ and firmly secure the PVC conduit on the solvent cement side of the OPEJ using IPEX pipe straps.
2. Set the expansion fitting by marking a line 1/2" from the end of the conduit to be inserted and insert the conduit into the OPEJ to this mark.
3. Secure and support the conduit raceway using IPEX pipe straps.



Scepter PVC Schedule 40 in 10' or 20' Lengths

Scepter PVC Schedule 40 conduit is listed with Underwriters Laboratories Inc. Article 352 of the National Electrical Code outlines the correct installation procedures.

Nominal Size (in)	10' Product Code	20' Product Code	Code OD (in)	ID (in)	Min. Wall (in)	Weight lbs./100 ft	Standard 10' ft/ crate
1/2	032405	032406	0.840	0.622	0.109	15	6,000
3/4	032407	032408	1.050	0.824	0.113	21	4,400
1	032410	032411	1.315	1.049	0.133	31	3,600
1-1/4	032412	032414	1.660	1.380	0.140	42	3,300
1-1/2	032415	032416	1.900	1.610	0.145	53	2,250
2	032420	032421	2.375	2.067	0.154	71	1,400
2-1/2	032425	032426	2.875	2.469	0.203	112	930
3	032430	032431	3.500	3.068	0.216	166	880
3-1/2	032435	032436	4.000	3.548	0.226	200	630
4	032440	032441	4.500	4.026	0.237	236	570
5	032450	032451	5.563	5.047	0.258	321	380
6	032460	032461	6.625	6.065	0.280	417	260

Weight Comparison of Scepter Rigid PVC Conduit (lbs./100 ft.)

Nominal Size (in)	Schedule 40 PVC	Aluminum	Rigid Steel
1/2	15	28	79
3/4	21	36	105
1	31	53	153
1-1/4	42	70	201
1-1/2	53	86	249
2	71	116	334
2-1/2	112	183	527
3	166	239	690
3-1/2	200	288	831
4	236	340	982
5	321	465	1,334
6	417	613	1,771



UL Listed-UL651
Sunlight Resistant
Rated for use with 90°C
conductors



NEMA TC-2
Corps. of Engineers Spec.
CE 303:01
Military Spec, Federal Spec.
WC 1094A

Scepter Schedule 80 Heavy Wall in 10' or 20' Lengths

Scepter PVC Heavy Wall conduit is for use above and below ground where it may be subject to severe physical damage, such as pole risers, bridge crossings and other similar applications.

Nominal Size (in)	10' Product Code	20' Product Code	OD (in)	ID (in)	Min. Wall (in)	Weight lbs/100 ft	Standard 10' ft/ crate
1/2	032505	032506	0.840	0.546	0.147	21	6,000
3/4	032507	032508	1.050	0.724	0.154	28	4,400
1	032510	032511	1.315	0.957	0.179	41	3,600
1-1/4	032512	032514	1.660	1.278	0.191	57	3,300
1-1/2	032515	032516	1.900	1.500	0.200	70	2,250
2	032520	032521	2.375	1.939	0.218	96	1,400
2-1/2	032525	032526	2.875	2.323	0.276	146	930
3	032530	032531	3.500	2.900	0.300	195	880
4	032540	032541	4.500	3.826	0.337	286	570
5	032550	032551	5.563	4.813	0.375	397	380
6	032560	032561	6.625	5.761	0.432	546	260

Weight Comparison of Scepter Rigid PVC Conduit (lbs./100 ft.)

Nominal Size (in)	Schedule 80 PVC	Aluminum	Rigid Steel
1/2	21	28	79
3/4	28	36	105
1	41	53	153
1 1/4	57	70	201
1 1/2	70	86	249
2	96	116	334
2 1/2	146	183	527
3	195	239	690
4	286	340	982
5	397	466	1,334
6	546	613	1,771



UL Listed-UL651
Sunlight Resistant
Rated for use with 90°C
conductors

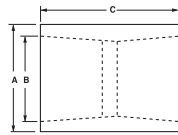


NEMA TC2
Corps. of Engineers Spec.
CE 303.01
Military Spec, Federal Spec.
WC 1094A

Physical Properties of PVC Type II

Properties	Unit (if applicable)	Value	ASTM Test Method
ELECTRICAL			
Dielectric Strength	kV/mm	21.4	D149
Permittivity (Dielectric Constant)	@ 60 Hz & 30°C	3.65	D150
	@ 1000 Hz & 30°C	3.22	D150
Dissipation Factor (Power Factor)	@ 60 Hz	0.01	D150
	@ 106 Hz	0.02	D150
Loss Index	@ 60 Hz	0.03	D150
PHYSICAL			
Specific Gravity		13.5	D792
Hardness	Durometer D	78	D676
Izod Impact Strength @ 73°F (23°C)	ft.lb/in. notch	15.0	D256
Tensile Strength @ 73°F (23°C)	psi	6000	D638
Compressive Strength	psi	8600	D695
Flexural Strength	psi	11500	D790
THERMAL			
Coefficient of Thermal Conductivity	BTU/sec/in ² /°F/in	0.11	C177
Coefficient of Linear Expansion	per °F x 10 ⁻⁵	5.5	D696
Heat Distortion Temperature at 264 psi	°F	158	D648
OTHERS			
Flammability		self-extinguishing	D635
Water Absorption in 30 days	%	0.6	
Color		charcoal grey	
Light Transmission		opaque	D791

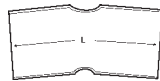
All technical data is believed to be accurate and is presented solely for information and guidance.



Couplings

Size (in)	Part Number	Product Code	A (in)	B (in)	C (in)
1/2	EC10	068000	1.060	0.844	1.400
3/4	EC15	068001	1.310	1.056	1.640
1	EC20	077003	1.590	1.315	2.031
1-1/4	EC25	077004	2.000	1.660	2.156
1-1/2	EC30	077005	2.230	1.900	2.281
2	EC35	077006	2.720	2.375	2.406
2-1/2	EC40	077007	3.320	2.875	3.187
3	EC45	077008	4.000	3.500	3.437
3-1/2	EC50	077009	4.500	4.000	3.625
4	EC55	077010	5.000	4.500	3.750
5	EC60	077011	6.120	5.563	4.187
6	EC65	077012	7.370	6.625	4.562
8	EC80	178192	-	-	-

5° couplings



Size (inches)	Part Number	Product Code	L (inches)
2	5EC35	077100	4.0
2-1/2	5EC40	077101	5.5
3	5EC45	077103	6.0
3-1/2	5EC50	077102	7.0
4	5EC55	077104	7.0
5	5EC60	077105	7.5
6	5EC65	077106	11.0



Long Line Couplings

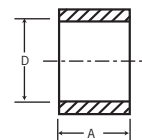
Size (inches)	Part Number	Product Code	A (inches)
1-1/2	LLC30	077192	3.175
2	LLC35	077193	3.675
2-1/2	LLC40	077194	4.280
3	LLC45	077195	4.800
4	LLC55	077196	6.200
5	LLC60	078068	8.220
6	LLC65	077198	8.220



Fabricated Swedge Reducer Couplings

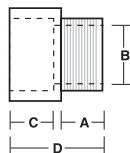
(Socket x Socket) Other sizes available upon request.

Size (inches)	Part Number	Product Code	L (inches)
2 x 1-1/4	SW3525	077320	4
3 x 2	SW4535	077321	6
3 x 2-1/2	SW4540	077335	6.5
4 x 2	SW5535	077322	7
4 x 2-1/2	SW5540	069282	-
4 x 3	SW5545	077333	7



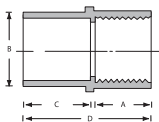
Repair Coupling Sleeve

Size (inches)	Part Number	Product Code	A (inches)	D Min (inches)	D Max (inches)
1-1/2	REC30	077292	2.300	1.912	1.924
2	REC35	077293	2.405	2.367	2.399
2-1/2	REC40	077294	3.450	2.883	2.897
3	REC45	077295	3.600	3.507	3.523
4	REC55	077296	3.920	4.506	4.524
5	REC60	077297	4.275	5.583	5.603
6	REC65	077298	4.620	6.647	6.669



Terminal Adapters

Size (in)	Part Number	Product Code	A (in)	B (in)	C (in)	D (in)
1/2	TA10	077021	0.700	0.591	0.750	1.550
3/4	TA15	077022	0.675	0.790	1.000	1.750
1	TA20	077023	0.625	1.000	1.115	1.860
1-1/4	TA25	077024	0.640	1.311	1.300	2.125
1-1/2	TA30	077025	0.725	1.530	1.425	2.250
2	TA35	077026	0.800	1.970	1.150	2.100
2-1/2	TA40	077027	0.800	2.346	1.900	2.930
3	TA45	077028	0.815	2.915	2.000	3.055
3-1/2	TA50	077029	1.000	3.385	1.715	3.055
4	TA55	077030	0.815	3.850	1.990	3.215
5	TA60	077031	1.725	5.015	2.000	5.985
6	TA65	077032	1.875	6.025	2.130	6.500
8	TA80	178190	-	-	-	-



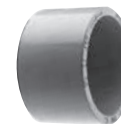
Female Adapters

Size (in)	Part Number	Product Code	A (in)	B (in)	C (in)	D (in)
1/2	FA10	077041	0.620	1.080	0.800	1.725
3/4	FA15	077042	0.820	1.300	0.800	1.900
1	FA20	077043	1.065	1.590	1.000	2.300
1-1/4	FA25	077044	1.395	2.000	1.015	2.425
1-1/2	FA30	077045	1.575	2.230	1.050	2.440
2	FA35	077046	2.050	2.720	1.075	2.550
2-1/2	FA40	077047	1.020	3.250	1.500	2.700
3	FA45	077048	3.090	4.000	1.630	4.100
3-1/2	FA50	077049	3.540	4.500	1.800	3.895
4	FA55	077050	4.025	5.000	1.755	4.210
5	FA60	077051	5.035	6.120	2.065	5.240
6	FA65	077052	6.045	7.370	2.065	5.235
8	FA80	178189	-	-	-	-

Note: All female adapters have NPT-tapered threads.

Note: 1/2" to 1 1/4" TA - tapered thread

1 1/2" to 6" TA - non-tapered thread



Reducer Bushings

Size (in)	Part Number	Product Code
3/4 x 1/2	1805	077300
1 x 1/2	1805-1	077301
1 x 3/4	1806	077302
1-1/4 x 3/4	1807-1	077303
1-1/4 x 1	1807	077304
1-1/2 x 1	1808-1	077305
1-1/2 x 1-1/4	1808	077306
2 x 1	1809-1	077313
2 x 1-1/4	1809	077307
2 x 1-1/2	1810	077308
2-1/2 x 2	1811	077309
3 x 2	1812-1	077310
3 x 2-1/2	1812	077311
4 x 2	1813-1	077319
4 x 3	1813	077312
4 x 3-1/2	1814	077317

*Additional sizes of reducer bushings are available upon request.

Threaded Reducer Bushings

Size (in)	Part Number	Product Code
3/4 x 1/2	1825	077314
1 x 1/2	1826	077315
1 x 3/4	1827	077316





End Bells

Size (in)	Part Number	Product Code
1/2	EB10	077406
3/4	EB15	077085
1	EB20	077323
1-1/4	EB25	077324
1-1/2	EB30	077325
2	EB35	077326
2-1/2	EB40	077327
3	EB45	077328
3-1/2	EB50	077329
4	EB55	077330
5	EB60	077331
6	EB65	077332
8*	EB80	277094
8**	FEB80	077652

* Molded

** Fabricated



End Caps

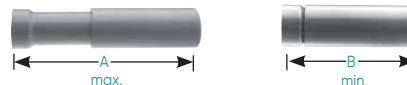
Size (in)	Part Number	Product Code
1/2	CAP10	077421
3/4	CAP15	077422
1	CAP20	077423
1-1/4	CAP25	077424
1-1/2	CAP30	077425
2	CAP35	077426
2-1/2	CAP40	077427
3	CAP45	077428
3-1/2	CAP50	277085
4	CAP55	077430
5	CAP60	077431
6	CAP65	077432



Poly Plugs

Size (in)	Part Number	Product Code
2 - 2-1/2	PP3540	077433
3 - 3-1/2	PP4550	077434
4	PP55	077435
5	PP60	077436
6	PP65	077437

"O" Ring Expansion Joints



Size (in)	Part Number	Product Code	A (in)	B (in)
1/2	EJ10	077381	12.00	8.00
3/4	EJ15	077382	12.00	8.00
1	EJ20	077383	12.50	8.50
1-1/4	EJ25	077384	13.00	9.00
1-1/2	EJ30	077385	13.00	9.00
2	EJ35	077386	13.25	9.25
2-1/2	EJ40	077387	13.25	9.25
3	EJ45	077388	22.25	14.25
3-1/2	EJ50	077389	22.25	14.25
4	EJ55	077390	22.25	14.25
5	EJ60	077391	22.25	14.25
6	EJ65	077392	22.25	14.25

One Piece Expansion Joints



Size (in)	Part Number	Product Code
1/2	OPEJ10	077018
3/4	OPEJ15	077019
1	OPEJ20	077053
1-1/4	OPEJ25	077054
1-1/2	OPEJ30	077061
2	OPEJ35	077063

T.A. Special Expansion Joint



Size (in)	Part Number	Product Code
2-1/2	EJ40TA	077398

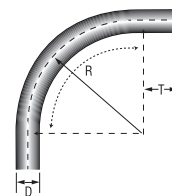
Expansion and Deflection Fitting Assemblies



Size (in)	Part Number	Description	Product Code
2*	SE-J-35	Complete Assembly	077889
3*	SE-J-45	Complete Assembly	077890
4*	SE-J-55	Complete Assembly	077891

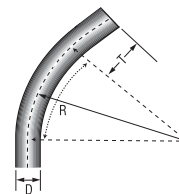
* Not Certified

90° Elbows Schedule 40 Standard Radius



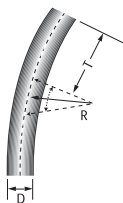
Size inches	Part Number	Product Code	D inches	T inches	R inches
1/2	EE1090	068580	0.840	1.500	4.00
3/4	EE1590	068581	1.050	1.500	4.50
1	EE2090	068582	1.315	1.875	5.75
1-1/4	EE2590	068583	1.660	2.000	7.25
1-1/2	EE3090	068584	1.900	2.000	8.25
2	EE3590	068585	2.375	2.000	9.50
2-1/2	EE4090	068586	2.875	3.000	10.50
3	EE4590	068587	3.500	3.125	13.00
3-1/2	EE5090	068588	4.000	3.250	15.00
4	EE5590	068589	4.500	3.375	16.00
5	EE6090	068591	5.563	3.625	24.00
6	EE6590	068592	6.625	3.750	30.00

45° Elbows Schedule 40 Standard Radius



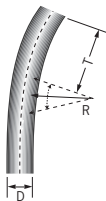
Size inches	Part Number	Product Code	D inches	T inches	R inches
1/2	EE1045	068600	0.840	1.500	4.00
3/4	EE1545	068601	1.050	1.500	4.50
1	EE2045	068602	1.315	1.875	5.75
1-1/4	EE2545	068603	1.660	2.000	7.25
1-1/2	EE3045	068604	1.900	2.000	8.25
2	EE3545	068605	2.375	2.000	9.50
2-1/2	EE4045	068606	2.875	3.000	10.50
3	EE4545	068607	3.500	3.125	13.00
3-1/2	EE5045	068608	4.000	3.250	15.00
4	EE5545	068609	4.500	3.375	16.00
5	EE6045	068611	5.563	3.625	24.00
6	EE6545	068612	6.625	3.750	30.00

30° Elbows Schedule 40 Standard Radius



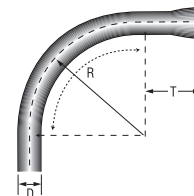
Size inches	Part Number	Product Code	D inches	T inches	R inches
1/2	EE1030	068620	0.840	1.500	4.00
3/4	EE1530	068621	1.050	1.500	4.50
1	EE2030	068622	1.315	1.875	5.75
1-1/4	EE2530	068623	1.660	2.000	7.25
1-1/2	EE3030	068624	1.900	2.000	8.25
2	EE3530	068625	2.375	2.000	9.50
2-1/2	EE4030	068626	2.750	3.000	10.50
3	EE4530	068627	3.500	3.125	13.00
3-1/2	EE5030	068628	4.000	3.250	15.00
4	EE5530	068629	4.500	3.375	16.00
5	EE6030	068631	5.563	3.625	24.00
6	EE6530	068632	6.625	3.750	30.00

22-1/2° Elbows Schedule 40 Standard Radius



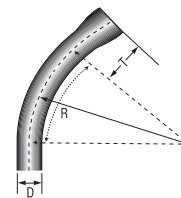
Size inches	Part Number	Product Code	D inches	T inches	R inches
1-1/2	EE1522	078580	1.900	2.000	8.25
2	EE2022	078581	2.375	2.000	9.50
2-1/2	EE2522	078582	2.875	3.000	10.50
3	EE3022	078583	3.500	3.125	13.00
3-1/2	EE3522	078584	4.000	3.250	15.00
4	EE4022	078585	4.500	3.375	16.00
5	EE5022	078586	5.563	3.625	24.00
6	EE6022	078587	6.625	3.750	30.00

90° Elbows Schedule 40 Integral Bell End



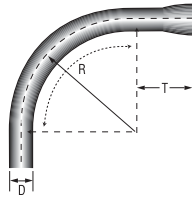
Size inches	Part Number	Product Code	D inches	T inches	R inches
1/2	EE1090B	068420	0.840	1.500	4.00
3/4	EE1590B	068421	1.050	1.500	4.50
1	EE2090B	068422	1.315	1.875	5.75
1-1/4	EE2590B	068423	1.660	2.000	7.25
1-1/2	EE3090B	068424	1.900	2.000	8.25
2	EE3590B	068425	2.375	2.000	9.50
2-1/2	EE4090B	068426	2.875	3.000	10.50
3	EE4590B	068427	3.500	3.125	13.00
3-1/2	EE5090B	068428	4.000	3.250	15.00
4	EE5590B	068429	4.500	3.375	16.00
5	EE6090B	068430	5.563	3.625	24.00
6	EE6590B	068431	6.625	3.750	30.00

45° Elbows Schedule 40 Integral Bell End



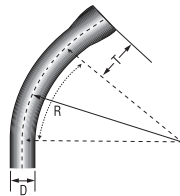
Size inches	Part Number	Product Code	D inches	T inches	R inches
1/2	EE1045B	068561	0.840	1.500	4.00
3/4	EE1545B	068562	1.050	1.500	4.50
1	EE2045B	068563	1.315	1.875	5.75
1-1/4	EE2545B	068564	1.660	2.000	7.25
1-1/2	EE3045B	068565	1.900	2.000	8.25
2	EE3545B	068566	2.375	2.000	9.50
2-1/2	EE4045B	068567	2.875	3.000	10.50
3	EE4545B	068568	3.500	3.125	13.00
3-1/2	EE5045B	068569	4.000	3.250	15.00
4	EE5545B	068570	4.500	3.375	16.00
5	EE6045B	068571	5.563	3.625	24.00
6	EE6545B	068572	6.625	3.750	30.00

90° Elbows Schedule 80 Standard Radius



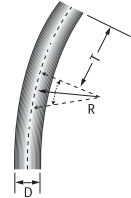
Size inches	Part Number	Product Code	D inches	T inches	R inches
1/2	80EE1090	068690	0.840	1.500	4.00
3/4	80EE1590	068691	1.050	1.500	4.50
1	80EE2090	068692	1.315	1.875	5.75
1-1/4	80EE2590	068693	1.660	2.000	7.25
1-1/2	80EE3090	068694	1.900	2.000	8.25
2	80EE3590	068695	2.375	2.000	9.50
2-1/2	80EE4090	068696	2.875	3.000	10.50
3	80EE4590	068697	3.500	3.125	13.00
4	80EE5590	068698	4.500	3.375	16.00
5	80EE6090	068699	5.563	3.625	24.00
6	80EE6590	068700	6.625	3.750	30.00

45° Elbows Schedule 80 Standard Radius



Size inches	Part Number	Product Code	D inches	T inches	R inches
1/2	80EE1045	068810	0.840	1.500	4.00
3/4	80EE1545	068811	1.050	1.500	4.50
1	80EE2045	068812	1.315	1.875	5.75
1-1/4	80EE2545	068813	1.660	2.000	7.25
1-1/2	80EE3045	068814	1.900	2.000	8.25
2	80EE3545	068815	2.375	2.000	9.50
2-1/2	80EE4045	068816	2.875	3.000	10.50
3	80EE4545	068817	3.500	3.125	13.00
4	80EE5545	068818	4.500	3.375	16.00
5	80EE6045	068819	5.563	3.625	24.00
6	80EE6545	068820	6.625	3.750	30.00

30° Elbows Schedule 80 Standard Radius



Size inches	Part Number	Product Code	D inches	T inches	R inches
1/2	80EE1030	068550	0.840	1.500	4.00
3/4	80EE1530	068551	1.050	1.500	4.50
1	80EE2030	068552	1.315	1.875	5.75
1-1/4	80EE2530	068553	1.660	2.000	7.25
1-1/2	80EE3030	068554	1.900	2.000	8.25
2	80EE3530	068555	2.375	2.000	9.50
2-1/2	80EE4030	068556	2.750	3.000	10.50
3	80EE4530	068557	3.500	3.125	13.00
4	80EE5530	068558	4.500	3.375	16.00
5	80EE6030	068559	5.563	3.625	24.00
6	80EE6530	068560	6.625	3.750	30.00

Schedule 40 Special Radius (Plain End)

Size Inches	Degree Bend	18" Radius Product Code	24" Radius Product Code	30" Radius Product Code	36" Radius Product Code	48" Radius Product Code	60" Radius Product Code
1	90	068702	068722	068742	068762	068782	#
	45	068802	068822	068842	068862	068882	#
	30	068902	068922	068942	068962	068982	#
	22-1/2	078853	078035	#	#	#	#
1-1/4	90	068703	068723	068743	068763	068783	#
	45	068803	068823	068843	068863	068883	#
	30	068903	068923	068943	068963	068983	#
	22-1/2	068513	078667	#	#	#	#
1-1/2	90	068704	068724	068744	068764	068784	#
	45	068804	068824	068844	068864	068884	#
	30	068904	068924	068944	068964	068984	#
	22-1/2	068523	078668	#	#	#	#
2	90	068705	068725	068745	068765	068785	068113
	45	068805	068825	068845	068865	068885	#
	30	068905	068925	068945	068965	068985	#
	22-1/2	068514	068547	#	068515	#	#
2-1/2	90	068706	068726	068746	068766	068786	#
	45	068806	068826	068846	068866	068886	#
	30	068906	068926	068946	068966	068986	#
	22-1/2	068524		#	#	#	#
3	90	068707	068727	068747	068767	068787	068114
	45	068807	068827	068847	068867	068887	#
	30	068907	068927	068947	068967	068987	#
	22-1/2	068516	068525	#	068517	068526	#
3-1/2	90	Use Standard	068728	068748	068768	068788	#
	45	Schedule 40	068828	068848	068868	068888	#
	30	Elbow	068928	068948	068968	068988	#
	22-1/2		068130	#	#	#	#
4	90	Use Standard	068729	068749	068769	068789	068112
	45	Schedule 40	068829	068849	068869	068889	078011
	30	Elbow	068929	068949	068969	068989	#
	22-1/2		068518	068519	068520	068521	068111
5	90			068751	068771	068791	068115
	45	Use Standard		068851	068871	068891	078615
	30	Schedule 40 Elbow		068951	068971	068991	068132
	22-1/2			068529	068522	#	#
6	90				068772	068792	#
	45	Use Standard			068872	068892	078220
	30	Schedule 40 Elbow			068972	068992	#
	22-1/2				068528	068527	078221
8	90	-	-	-	-	068052	#
	45	-	-	-	-	068082	#
	22-1/2	-	-	-	-	068081	#
	11-1/4	-	-	-	-	068080	#

Note: # indicates available on request.
Material is non-cancelable and non-returnable.

Note: Larger Radius Elbows are available on request and are non-cancelable and non-returnable.

Schedule 40 Special Radius (Belled One End)

Size Inches	Degree Bend	18" Radius Product Code	24" Radius Product Code	36" Radius Product Code	48" Radius Product Code
2	90	068014	068030	068054	068078
	45	068015	068033	068055	068079
2-1/2	90	068016	068034	068056	068086
	45	068017	068035	068057	068090
3	90	068018	068036	068058	068091
	45	068019	068037	068059	068092
3-1/2	90	Use Std. Sch. 40 Radius (15")	068038	068070	068093
	45		068039	068071	068094
4	90	Use Std. Sch. 40 Radius (16")	068050	068072	068095
	45		068053	068073	068096
5	90	Use Std. Sch. 40 Radius (24")	Use Std. Sch. 40 Radius (24")	068074	068097
	45			068075	068098
6	90	Use Std. Sch. 40 Radius (30")	Use Std. Sch. 40 Radius (30")	068076	068099
	45			068077	068106

Schedule 80 Special Radius (Belled One End)

Size Inches	Degree Bend	18" Radius Product Code	24" Radius Product Code	30" Radius Product Code	36" Radius Product Code	48" Radius Product Code
1	90	068710	#	#	#	068541
	45	#	#	#	#	#
1-1/4	90	068711	068735	#	#	068542
	45	#	#	#	#	#
1-1/2	90	068712	#	#	068545	068543
	45	#	#	#	#	#
2	90	068713	068736	#	068775	068544
	45	#	068530	#	068534	#
2-1/2	90	068714	068737	#	068776	068548
	45	#	068531	#	068535	#
3	90	068715	068738	#	068777	068794
	45	#	068532	#	068536	#
4	90	068716	068739	068549	068778	068795
	45	#	068533	#	068537	#
5	90	Use Standard Schedule 80 Radius (24")		#	068779	068796
	45			#	068538	068546
6	90				068540	068797
	45				068539	#

Note: # indicates available on request.
Material is non-cancelable and non-returnable.

Note: 30° and 22½° Elbows are available on request.

Note: Larger Radius Elbows are available on request and are non-cancelable and non-returnable.

Pipe Straps PVC, 2 Hole



Size (in)	Part Number	Product Code
1/2	PS10	077811
3/4	PS15	077812
1	PS20	077813
1-1/4	PS25	077814
1-1/2	PS30	077815
2	PS35	077816

Pipe Straps PE, 2 Hole



Size (in)	Part Number	Product Code
2-1/2	PS40	077262
3	PS45	077263
4	PS55	077264

PVC Coated Steel, 2 Hole



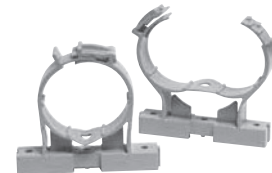
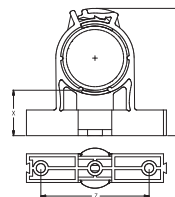
Size (in)	Part Number	Product Code
2	CS35	077818
2-1/2	CS40	077819
3	CS45	077820
3-1/2	CS50	077821
4	CS55	077822
	CS60	077824
6	CS65	077823

PVC Coated Steel, 1 Hole



Size (in)	Part Number	Product Code
1/2	CS10-1	077831
3/4	CS15-1	077832
1	CS20-1	077833
1-1/4	CS25-1	077834
1-1/2	CS30-1	077835
2	CS35-1	077836
3	CS45-1	077838
3-1/2	CS50-1	077839
4	CS55-1	077840

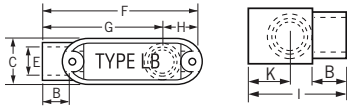
Conduit Clamps and Spacers



Size (in)	Part Number	Product Code
1/2	CCS10	077794
3/4	CCS15	077796
1	CCS20	077797
1-1/4	CCS25	077798
1-1/2	CCS30	077799
2	CCS35	077800
Strut Base	CCS-B	077343

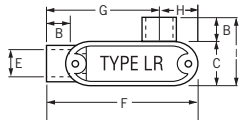
CCS-B are sold individually, two pieces are required to create one base unit.

Access Fittings* Type LB



Size (in)	Part Number	Product Code
1/2	SLB10S	077541
3/4	SLB20S	077542
1	SLB30S	077543
1-1/4	SLB40S	077544
1-1/2	SLB50S	077545
2	SLB60S	077546
2-1/2	SLB70S	077547
3	SLB80S	077488
3-1/2	SLB90S	077549
4	SLB100S	077550

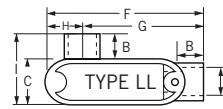
Access Fittings* Type LR



Size (in)	Part Number	Product Code
1/2	SLR10S	077481
3/4	SLR20S	077482
1	SLR30S	077483
1-1/4	SLR40S	077484
1-1/2	SLR50S	077485
2	SLR60S	077486
2-1/2	SLR70S	077480
3	SLR80S	077488
3-1/2	SLR90S	077487
4	SLR100S	077489

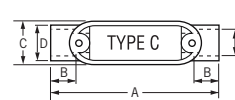
* Note: All access fittings are UL listed for wet locations. Supplied with threaded brass inserts, brass screws and PVC gasketing. Stainless steel screws are available upon request.

Access Fittings* Type LL



Size (in)	Part Number	Product Code
1/2	SLL10S	077521
3/4	SLL20S	077522
1	SLL30S	077523
1-1/4	SLL40S	077524
1-1/2	SLL50S	077525
2	SLL60S	077526
2-1/2	SLL70S	077527
3	SLL80S	077528
3-1/2	SLL90S	077530
4	SLL100S	077529

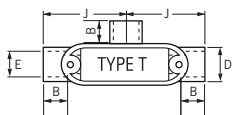
Access Fittings* Type C



Size (in)	Part Number	Product Code
1/2	SC10S	077501
3/4	SC20S	077502
1	SC30S	077503
1-1/4	SC40S	077504
1-1/2	SC50S	077505
2	SC60S	077506
2-1/2	SC70S	077507
3	SC80S	077508
3-1/2	SC90S	077510
4	SC100S	077509

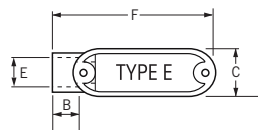
* Note: All access fittings are UL listed for wet locations. Supplied with threaded brass inserts, brass screws and PVC gasketing. Stainless steel screws are available upon request.

Access Fittings* Type T



Size (in)	Part Number	Product Code
1/2	ST10S	077461
3/4	ST20S	077462
1	ST30S	077463
1-1/4	ST40S	077464
1-1/2	ST50S	077465
2	ST60S	077466
2-1/2	ST70S	077467
3	ST80S	077468
3-1/2	ST90S	077471
4	ST100S	077572

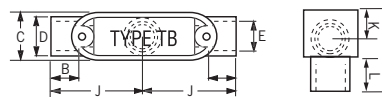
Access Fittings* Type E



Size (in)	Part Number	Product Code
1/2	SE10S	077561
3/4	SE20S	077562
1	SE30S	077563
1-1/4	SE40S	077564
1-1/2	SE50S	077565
2	SE60S	077566
2-1/2	SE70S	077567

* Notes: All access fittings are UL listed for wet locations. Supplied with threaded brass inserts, brass screws and PVC gasketing. Stainless steel screws are available upon request.

Access Fittings* Type TB



Size (in)	Part Number	Product Code
1/2	STB10S	077451
3/4	STB20S	077452
1	STB30S	077453
1-1/4	STB40S	077454
1-1/2	STB50S	077455
2	STB60S	077456

Not UL listed.

Access Fitting Dimensions*

Size (in)	A (in)	B (in)	C (in)	D (in)	E (in)	F (in)
1/2	5.6	0.6	1.3	1.1	0.8	4.3
3/4	5.6	0.8	1.5	1.3	1.1	5.4
1	6.5	0.9	1.7	1.6	1.3	6.3
1-1/4	7.9	1.1	2.3	2.0	1.7	7.6
1-1/2	8.5	1.1	2.7	2.3	1.9	8.3
2	10.9	1.2	3.2	2.8	2.4	10.5
2-1/2	14.6	1.8	4.5	4.0	2.9	13.6
3	14.6	1.9	4.5	4.0	3.5	13.6
3-1/2	17.0	2.1	5.5	5.0	4.0	16.0
4	17.0	2.1	5.5	5.0	4.5	16.0

Size (in)	G (in)	H (in)	I (in)	J (in)	K (in)	L (in)
1/2	4.1	1.3	2.5	2.3	1.0	0.8
3/4	4.1	1.3	2.5	2.8	1.0	0.8
1	4.8	1.5	2.1	3.3	1.1	1.1
1-1/4	5.8	1.8	3.6	4.0	1.6	1.0
1-1/2	6.5	1.8	3.9	4.3	1.7	1.1
2	8.2	2.3	4.5	5.4	2.0	1.2
2-1/2	9.8	3.8	6.2	7.3	2.6	-
3	10.9	2.7	6.2	7.3	2.6	-
3-1/2	11.5	4.5	7.5	8.5	3.0	-
4	11.5	4.5	7.5	8.5	3.0	-

* Notes: All access fittings are UL listed for wet locations. Supplied with threaded brass inserts, brass screws and PVC gasketing. Stainless steel screws are available upon request.



Service Entrance Fittings

Size (in)	Part Number	Product Code
1/2	EF10	077281
3/4	EF15	077282
1	EF20	077283
1-1/4	EF25	077284
1-1/2	EF30	077285
2	EF35	077286
2-1/2	EF40	077287
3	EF45	077288
3-1/2	EF50	077289
4	EF55	077290



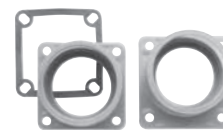
Offset Terminal Adapters (Meter Offsets)

Size (in)	Part Number	Product Code
1-1/4	MO25	077941
2	MO35	077942

Long Meter Offsets (Fabricated)



Size (in)	Part Number	Product Code
1-1/4	LMO25	069641
1-1/2	LMO30	069645
2	LMO35	069646



Meter Hubs

Size (in)	Part Number	Product Code
1-1/4	MHU25	077961
1-1/2	MHU30	077963
2	MHU35	077965
2-1/2	MHU40	077967
3	MHU45	077968

Slip Meter Risers



Schedule 40, Size (in)	Part Number	Product Code
2	SMR35TA	068063
2-1/2	SMR40TA	068064
3	SMR45TA	068373
4	SMR55TA	068065

Note: Meter risers are 2' in length and come complete with male adapter.

"Two in One" Pull Elbow

Scepter's "two in one" access pull elbow reduces inventory costs and increases installation flexibility (3/4" hub fitting supplied with 3/4" x 1/2" reducers). The pull elbow is approved for wet locations and provides for easy wire pulling. They are manufactured from high impact, nonconducting and noncorroding PVC.

Size (in)	Part Number	Product Code
1/2 or 3/4	PE15/10	077491



Nonmetallic Strain Relief Connectors

Scepter's Nonmetallic Strain Relief Connectors are supplied with all the components you need for a complete connection. The connector body, a selection of grommets and compression rings accepting a range of cord dimensions, a sealing 'O' ring and metallic locknut are all supplied in one package. Available in 1/2" and 3/4" threaded hub and 3/4" PVC socket solvent weld configurations to accommodate a variety of applications.

Threaded, Strain Relief Connector

c/w "O" Ring, Locknut & 4 Grommets



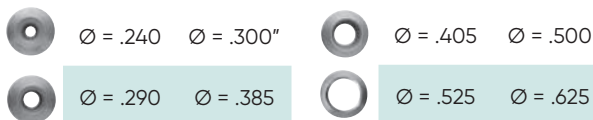
Size (in)	Part Number	Product Code
1/2	TSRCU10	077244
3/4	TSRCU15	077261

Socket Solvent Weld Strain Relief Connectors



Size (in)	Part Number	Product Code
3/4	SRCU15 c/w 4 grommets	077209

Strain Relief Connectors Grommet Dimensions



Note: All grommets are supplied with TSRCU10, TSRCU15 & SRCU15.

F Series - Single Gang Plates



DRC15/10 TSC15/10 20RC15/10 20-3RC15/10 30RC15/10 BRC15/10

Description	Part Number	Product Code
Duplex Receptacle	DRC15/10	077617
Toggle Switch	TSC15/10	077616
Single Receptacle	20RC15/10	077618
Single Receptacle	20-3RC15/10	077619
Single Receptacle	30RC15/10	077620
Blank c/w Gasket	BRC15/10	077611
PVC Gasket only for F Series Box	GASK15/10	077621

F Series - Double Gang Plates



BRC20-2-U TSC20-2-U DRC20-2-U TSDC20-2-U GASKF20-2-U

Description	Part Number	Product Code
Blank Cover c/w Gasket	BRC20-2-U	077359
Double Switch	TSC20-2-U	077373
Double Duplex Receptacle	DRC20-2-U	077362
Combo Switch Duplex Rec.	TSDC20-2-U	077374
PVC Gasket	GASK20-2	077743
Foam Gasket with Adhesive	GASKFU20-2	172650

F Series - Triple Gang Plates



Description	Part Number	Product Code
Triple Receptacle	DRC20-3	077747
Combo Switch Receptacle	DSDR20-3	077745
Triple Switch	TSC20-3	077744
Combo Switch Receptacle	TSDC20-3	077746
Blank Cover c/w Gasket	BRC20-3	077748
PVC Gasket	GASK20-3	077749

Weatherproof Covers - Single Gang

	Description	(in)	Part Number	Product Code
 VPT15/10	Plunger-style Switch Cover		VPT15/10	077630
 VSC15/10	Toggle Switch Cover		VSC15/10	077612
 WTG15/10	Grey Toggle Switch Cover		WTG15/10	077606
 WDR15/10 RWDRE15/10	Grey Duplex Receptacle		WDR15/10	077993
 WDR15/10 RWDRE15/10	White Duplex Receptacle		RWDR15/10	077786
 WGF15/10 RWGF15/10	Grey Ground Fault Receptacle		WGF15/10	077785
 WGF15/10 RWGF15/10	White Ground Fault Receptacle		RWGF15/10	077787
 WTL15 WTL20 WTL30	Single Receptacle Device 15 AMP	1.375	WTL15	077992
 WTL15 WTL20 WTL30	Single Receptacle Device 20 AMP	1.625	WTL20	077994
 WTL15 WTL20 WTL30	Single Receptacle Device 30 AMP	1.722	WTL30	077991
 WTL15 WTL20 WTL30	Single Receptacle Device 50 AMP	2.187	WTL50	077951
 WTL50	Grey Double Door Duplex Receptacle		WDRE15/10	077087
WTL50	White Double Door Duplex Receptacle		RWDR15/10	077408
WDR15/10 RWDRE15/10	Gasket for W Series Cover (except WDRE & RWDRE)		GASKW	077755
WDR15/10 RWDRE15/10	Gasket for E & RWDRE Covers		GASKDD	072225

Note: Weatherproof covers, with lids closed, are UL Listed for wet locations.

Weatherproof Covers - Double Gang

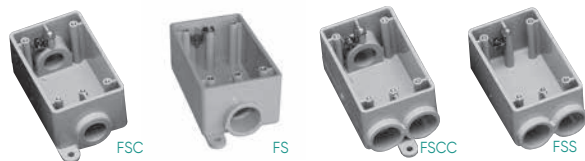
	Description	Part Number	Product Code
 VSC20-2-U	Toggle Switch Cover	VSCU20-2	077376
 VSC20-2-U	Combination Switch & GFI Receptacle	VSRC20-2	077357
 VSDR20-2-U	Combination Switch & Duplex Receptacle	VSDRU20-2	077356
 VSGG20-2	Double Door GFI Cover	VSGG20-2	077096
 VSDD20-2	Double Door Duplex Cover	VSDD20-2	077097
 VSGG20-2 & VSDD20-2	Gasket for 2-Gang 'F' Boxes (except VSGG20-2 & VSDD20-2)	GASKFU20-2	172650
 VSGG20-2 & VSDD20-2	Gasket for VSGG20-2 & VSDD20-2 Double Gangs	GASKV20-2	072227

Note: Weatherproof covers, with lids closed, are UL Listed for wet locations.

F Series Single Gang Boxes

Outside Dimensions:

Height, $4\frac{9}{16}$ " – Width, $2\frac{13}{16}$ " – Depth 2", Cubic Inches = 25.67



Size (in)	Part Number	Product Code
1/2	FSC10	077607
3/4	FSC15	077608
1/2	FS10	077601
3/4	FS15	077602
1/2	FSCC10	077622
3/4	FSCC15	077623
1/2	FSS10	077604
3/4	FSS15	077605

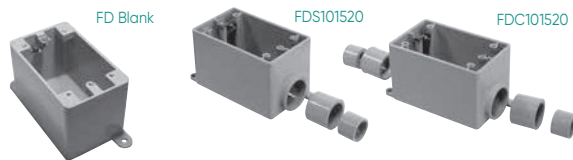
Note: 10 = 1/2" Hub, 15 = 3/4" Hub

FD Series Single Gang Deep Boxes

Outside Dimensions:

Height, $4\frac{9}{16}$ " – Width, $2\frac{13}{16}$ " – Depth $2\frac{3}{4}$ ", Cubic Inches = 35.30

With the exception of the FD Blank Box, Scepter FD Series Single Gang Deep Boxes are molded with 1" conduit hubs and supplied with reducer bushings. The conduit hub(s) are field modified as 1/2", 3/4" or 1" to accommodate job-site requirements. The appropriate quantity of 1" x 3/4" and 3/4" x 1/2" reducers to create the desired hub size are packaged with each FD Series Single Gang Deep Box.



Size (in)	Part Number	Product Code
1/2, 3/4, 1	FDC101520	077291
1/2, 3/4, 1	FDS101520	077299
BLANK	FD BLANK	077603
347 VOLT	FD347	077610

Note: 10 = 1/2" Hub, 15 = 3/4" Hub, 20 = 1" Hub



F Series Single Gang Deep Boxes

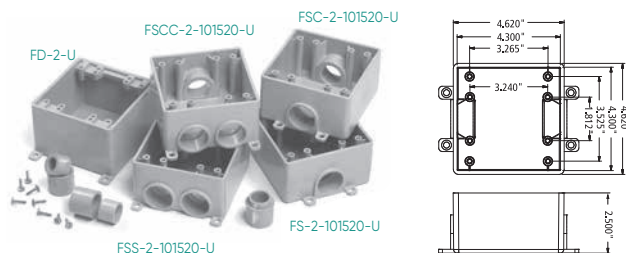
Now available: Scepter® PVC F-Series Single Gang Deep Boxes for use with self-taping, stainless steel screws. These boxes are ideal for use in environments where corrosion is an issue.

Size (in)	Volume (in)	Part Number	Product Code
1/2, 3/4, 1	26.8	FDS 101520ST	077847
1/2, 3/4, 1	26	FDC 101520ST	077849

F Series Double Gang Boxes

FS-2-U cu.in. = 38.5, FSC-2-U & FSS-2-U cu.in. = 37.0, FSCC-2-U cu.in. = 35.0, FD-2-U cu.in. = 47.5

Hub Size (in)	Part Number	Product Code	OD (inches)		
			H	W	D
1/2, 3/4, 1	FS-2-101520-U	077364	4.62	4.62	2.5
1/2, 3/4, 1	FSC-2-101520-U	077368	4.62	4.62	2.5
1/2, 3/4, 1	FSS-2-101520-U	077372	4.62	4.62	2.5
1/2, 3/4, 1	FSCC-2-101520-U	077369	4.62	4.62	2.5
Blank	FD-2-U	077649	4.62	4.62	3.0



F Series Triple Gang Boxes

FS-3 cu.in. = 56.0, FSC-3 cu.in. = 54.0

Hub Size (in)	Part Number	Product Code	OD (inches)		
			H	W	D
1/2, 3/4, 1	FS-3-101520	077337	4.5	6.6	2.5
1/2, 3/4, 1	FSC-3-101520	077438	4.5	6.6	2.5
Blank	FD-3	077737	4.5	6.6	3.0



Note: All F series & octagonal boxes are supplied with integral mounting feet, threaded brass inserts and grounding clips unless otherwise noted.

Octagonal Boxes*

Octagonal Boxes are shipped complete with cover, gasket, 4 reducing bushings (3/4" x 1/2") and 3 knock-out plugs to be installed from inside box to seal off unused entry hubs.



Size (in)	Part Number	Hub Size (in)	Product Code
4 x 1-1/2	OB15/10	1/2 - 3/4	077983
4 x 2-1/8	OB20	1	077984

Octagonal Box Extension Rings*

Size (in)	Part Number	Product Code
4 x 1 deep	XR20	077989
4 x 2 deep	XR35	077990



* Octagonal Boxes are not designed for supporting luminaires.
Note: All F series & octagonal boxes are supplied with integral mounting feet, threaded brass inserts and grounding clips

Threaded Round Box

Scepter's Threaded Junction Boxes are corrosion resistant, non-conductive and incorporate high-temperature silicone gaskets and brass hardware to withstand extreme temperature variations. Manufactured from glass-reinforced thermoplastic polyester resin, these boxes can endure extreme temperatures (material temperature range -40°F to +302°F).

Size (in)	Part Number	Product Code
4 - 3/4" Threaded Hubs	LFB150C	077250
4 - 3/4" Threaded Hubs c/w 1/2" Threaded Hole in Cover	LFB150T	077251



LFB150C



LFB150T

PVC Molded Junction Boxes

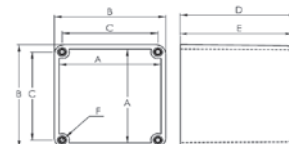
Junction boxes are supplied with threaded brass inserts, brass screws, PVC gasketing and mounting feet. Nylon and stainless steel screws, and larger sizes of fabricated junction boxes, are available upon request.



(F = Threaded brass insert size.)

Scepter PVC junction boxes are:

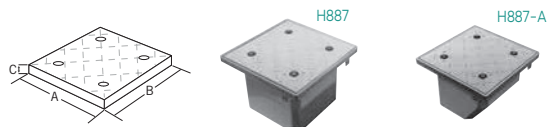
NEMA 1, 2, 3, 4, 4X, 6P, 12, 13
UL listed for wet locations



Size (in)	Part Number	Part Number	A	B	C	D	E	F
4x4x2	JB442	077659	3.71	4.05	3.42	2.15	1.99	8-32
4x4x4	JB444	077696	3.65	4.00	3.43	4.17	4.02	8-32
4x4x6	JB446	077669	3.65	4.02	3.43	6.23	6.00	8-32
5x5x2	JB552	077670	4.66	5.00	4.50	2.00	1.85	8-32
6x6x4	JB664	077697	6.08	6.41	5.80	4.20	4.00	8-32
6x6x6	JB666	077698	6.02	6.38	5.80	6.00	6.21	8-32
8x8x4	JB884	077664	8.06	8.60	7.95	4.18	3.97	1/4-20
8x8x7	JB887	077671	8.10	8.60	7.95	7.24	7.00	1/4-20
12x12x4	JB12124	077672	11.93	12.48	11.84	4.26	4.00	1/4-20
12x12x6	JB12126	077666	11.97	12.36	11.80	6.25	5.99	1/4-20
12x12x8	JB12128	077668	11.90	12.50	11.84	8.24	7.96	1/4-20

Flanged Box with Fiber-Reinforced Safety Tread Cover

Scepter's JB Flanged 'H' Series Junction Boxes feature a fiber-reinforced safety tread cover which uses a recessed Hex Key fastening hardware for a simple installation while reducing the opportunity for tampering. These boxes are not UL Listed and are not returnable.



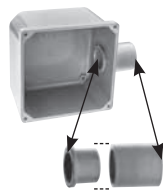
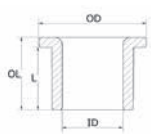
Part Number	Product Code	Box ID (in)			Lid Dimensions (in)		
		L	W	D	A	B	C
H664	077685	6	6	4-1/4	9.0	9.0	0.60
H666	077686	6	6	6-1/4	9.0	9.0	0.60
H884	077687	8	8	4-1/4	11.5	11.5	0.75
H886	077688	8	8	6-1/4	11.5	11.5	0.75
H887	077689	8	8	7-1/4	11.5	11.5	0.75
H887-A	077692	8	8	7-1/4	11.5	11.5	0.75

Fabricated Boxes

Unflanged PVC fabricated boxes of any size may be made to customers' specifications and come complete with lids, gaskets and screws. These boxes are not UL Listed and are not returnable.

Junction Box Adapters

Junction Box Adapters, installed using a standard PVC coupling, offer a trouble-free and reliable PVC connection. In addition to providing a strong connection, the JBA also maximizes the interior box wiring space unlike the use of male adapters (TA) and facilitates wire pulling - the smooth internal edges limiting the potential for wire damage.



Junction Box Adapter Standard PVC Coupling






Junction box and couplings sold separately

Size (in)	Part Number	Product Code	ID	OD	L	OL
1/2	JBA10	077721	0.62	1.20	0.81	0.95
3/4	JBA15	077722	0.79	1.40	0.87	1.01
1	JBA20	077723	1.00	1.58	0.89	1.06
1-1/4	JBA25	077724	1.35	1.98	1.12	1.30
1-1/2	JBA30	077725	1.59	2.37	1.10	1.33
2	JBA35	077726	2.05	2.85	1.25	1.54
2-1/2	JBA40	077727	2.45	3.34	1.68	1.99
3	JBA45	077728	3.05	3.10	1.77	2.11
3-1/2	JBA50	077729	3.54	4.50	2.09	2.41
4	JBA55	077730	4.02	5.03	1.99	2.30

Nonmetallic Floor Box, Cover & Metal Cover Adapter

Scepter's floor box and duplex receptacle covers are constructed from high impact, noncorroding and nonconducting PVC.

The flush-mount covers are available in custom colors and are shipped with a leveling ring. Metal cover adapter kits are also available, allowing you to adapt to metal floor plates. Our 6" deep floor box allows flexibility for various concrete floor pours, while the 4-3/4" width offers easy access and ample wire room. Scepter's FB box is molded with 2 - 1" and 2 - 3/4" hub openings.

Description	Product Code	Part Number	
Floor Box Base (Includes disposable protective cap & reducer plugs)	076954	FB	
Floor Box Base c/w Leveling Ring Adapter (includes disposable protective cap, reducer plugs & leveling ring adapter)	077068	FBKIT	
Floor Box Stand Kit (includes FB Box) (is equipped with several height brackets which accommodate the different rebar and post-tension cable heights and slab depths found from job-site to job-site.)	077700	FBSKIT	
Metal Cover Adapter Kit (includes leveling ring, metal cover adapter & 2 gaskets)	076953	AFMC	
Universal Leveling Ring Adapter	076606	LRA-U	
Floor Box Duplex Receptacle Cover (Nonmetallic) (includes flush mount cover, blank cover & gasket)			
	Brown	076955	FBDRCB
	Gold	076949	FBDRCG
	Grey	076600	FBDRCGr
	Light Almond	076605	FBDRCA
Tri-Service Universal Divider Kit (includes upper & lower dividers, riser tube & two grommets)			
	077948	FBUDK	
Y Connector (3/4")	077499	FBYC	

All boxes are shipped complete with reducer plugs for added versatility.

Brass and Nickel Cover Plates

These cover plates help to protect enclosed power data and communications wiring from daily environmental floor conditions such as mopping (UL scrub water tested) and foot traffic (UL approved for cover loading).

The covers feature a light lacquer finish for extra strength and durability in high traffic areas and include a rubber gasket and aluminum backing plate to create a water-tight seal. The flush mount cover plates should be installed to the floor box using the LRA-U.



Nickel Cover Plates

Description	Part Number	Product Code
Duplex Receptacle Cover with Dual Flip Lid	DFL-2-N	178279
Duplex Receptacle Cover with Individual Screw Plug Openings	SSC-N	178278
Combination 2" x 1/2" Single Screw Plug Opening	DSC-N	178280



DFL-2-N



SSC-N



DSC-N

Brass Cover Plates

Description	Part Number	Product Code
Duplex Receptacle Cover with Dual Flip Lid	DFL-2	178096
Duplex Receptacle Cover with Individual Screw Plug Openings	SSC	178093
Combination 2" x 1/2" Single Screw Plug Opening	DSC	178091
Combination 2" x 1/2" Single Screw Plug and 1/2" Datacomm Opening	DSC-P/C	178092



DFL-2



SSC



DSC-N

IPEX 100 PVC Conduit Solvent Cement

Size	Part Number	Product Code
250ml (1/2 Pint)	S100PT5	078883
500ml (Pint)	S100PT	078884
1L (Quart)	S100QT	078885
*4L (Gallon)	S100GAL	078887



Cold Weather / Wet Weather Cement

Size	Part Number	Product Code
500ml (Pint)	CWC10	078503
1L (Quart)	CWC20	078886

IPEX 100T Primer – Clear

Size	Part Number	Product Code
500ml (Pint)	C100PT	078174
1L (Quart)	C100QT	078175



IPEX Primer – Purple

Size	Part Number	Product Code
1L (Quart)	PRMP20	078054

Average # of Joints per Pint or Quart of Cement

Nominal Pipe Size inches	# of Joints / Pint	# of Joints / Quart	Nominal Pipe Size inches	# of Joints / Pint	# of Joints / Quart
1/2	350	700	2-1/2	40	80
3/4	200	400	3	35	70
1	150	300	3-1/2	30	60
1-1/4	110	220	4	24	48
1-1/2	80	160	5	10	20
2	45	90	6	8	16

**NEW
LARGER SIZES**

The RIGHT BOX for the RIGHT Environment



Scepter JBox has expanded its offering to include 14" and 16" molded PVC junction boxes...the LARGEST available anywhere!

FEATURES & BENEFITS

- NEMA 1,2,3R,4,4X,12,13
- 100% Nonmetallic
- Hand-close fastener tabs
- Back panels available for sizes 6" and up

Visit www.ipexna.com



Scepter JBox

Introducing the Scepter® JBox™, the Next Generation Junction Box. The original junction box is completely redesigned and features have been added to make this the easiest box to use. The patent pending integral gasket, non-metallic fasteners, molded mounting feet, embossed grid-lines and flat cover features have been engineered to provide a contractor-friendly junction box.

NEMA Rated: 1,2,3R,4,4X,6*,6P*,12,13.

*Applies only to 4" to 12" non-hinged covers



FEATURES & BENEFITS

Hand-Close Fasteners

- Close by hand – tool assist to open
- 100% non-metallic – corrosion resistant material
- No loose hardware for easy installation

Smooth Flat Cover

- No ribs – offers a flat, smooth surface for mounting of devices or labels

Integrated Gasket

- Injection molded and extruded gaskets permanently fixed to the cover – no installation required
- Proprietary gasket material creates a 6P rated enclosure (4" – 12")
- Neoprene gasket material creates a 4X rated enclosure (14" – 16")

Molded Mounting Feet

- Molded – no loose parts to assemble
- Located on corners out of the way of conduit connections
- Flush with the back of the box for close surface mounting
- Integrated design of mounting feet offers improved strength

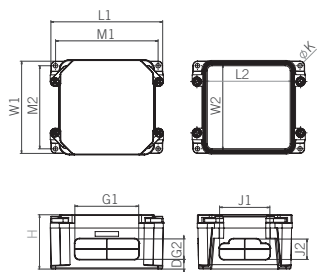
Built-in Gridlines

- Easy reference for drilling knockouts
- Makes conduit alignment a snap

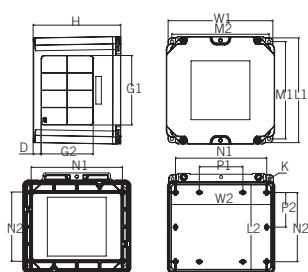


Size inches	Part Number	Product Code	L1	W1	L2	W2	H	M1 inches	M2	G1	G2	J1	J2	D	K
4x4x2	JBX442	277000	4.97	3.93	3.48	3.48	2.90	4.48	3.44	2.41	1.09	1.72	1.09	0.51	0.24
4x4x4	JBX444	277001	4.90	3.86	3.48	3.48	4.89	4.41	3.37	2.22	2.97	1.59	2.97	0.59	0.24
5x5x2	JBX552	277002	5.97	4.93	4.55	4.55	2.90	5.48	4.44	3.41	1.09	2.69	1.09	0.51	0.24
6x3x4	JBX634	277003	3.90	5.86	2.48	5.48	4.89	3.41	5.37	1.22	2.72	3.42	2.72	0.59	0.28
6x6x4	JBX664	277004	7.58	7.58	5.86	7.20	4.90	6.90	6.90	4.47	2.47	4.47	2.47	0.59	0.28
6x6x6	JBX666	277005	7.51	7.51	5.79	7.13	6.90	6.83	6.83	4.22	4.47	4.22	4.47	0.72	0.28

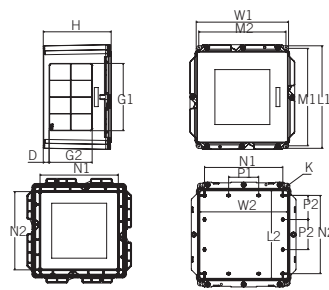
Size inches	Part Number	Product Code	L1	W1	L2	W2	H	M1 inches	M2	G1	G2	N1	N2	P1	P2	D	K
8x8x4	JBX884	277006	9.58	9.58	7.86	9.20	4.90	8.90	8.90	6.47	1.97	8.25	6.26	3.94	3.13	0.59	0.28
8x8x7	JBX887	277007	9.47	9.47	7.76	9.10	7.90	8.80	8.80	6.22	4.65	8.25	6.26	3.94	3.13	0.75	0.28
12x12x4	JBX12124	277008	13.58	12.24	11.74	11.74	4.90	12.90	11.56	9.28	2.03	10.26	10.25	3.94	3.13	0.56	0.28
12x12x6	JBX12126	277009	13.51	12.17	11.74	11.74	6.90	12.83	11.49	9.03	3.78	10.26	10.25	3.94	3.13	0.67	0.28
12x12x8	JBX12128	277010	13.44	12.10	11.74	11.74	8.90	12.76	11.42	8.81	5.64	10.26	10.25	3.94	3.13	0.76	0.28
14x14x8	JBX14148	277011	15.72	14.39	13.80	13.80	9.1	15.1	13.70	11.05	5.69	12.25	10.26	3.94	3.16	0.83	0.33
14x14x10	JBX141410	277012	15.66	14.32	13.80	13.80	11.1	15.0	13.64	11.05	7.55	12.25	10.26	3.94	3.16	0.83	0.33
16x16x10	JBX161610	277013	17.64	16.30	15.71	15.71	11.1	17.0	15.60	12.55	7.55	14.25	12.26	4.71	4.09	0.83	0.33



JBX442 - JBX666



JBX884 - JBX887



JBX12124 - JBX161610

Scepter JBox with Hinged Cover

The Hinged Cover opens up to 214° and are removable for complete and easy access to control devices and instrumentation. The Scepter JBox Hinged Cover is NEMA 3R and 4X rated, ideally suited for indoor and outdoor industrial, MRO and OEM applications, and in wash-down environments. It is 100% nonmetallic and includes all the features that users have come to appreciate in the Scepter JBox.



NEMA Rated: 1,2,3R,4,4X,12,13

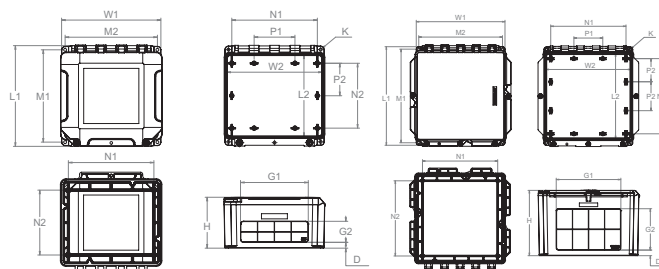
Size inches	Part Number	Product Code	L1	W1	L2	W2	H	M1	M2	G1	G2	N1	N2	P1	P2	D	K
8x8x4	JBXH884	277100	9.58	9.58	7.86	9.2	4.9	8.9	8.9	6.47	1.97	8.25	6.26	3.94	3.13	0.59	0.28
8x8x7	JBXH887	277101	9.47	9.47	7.86	9.2	7.9	8.9	8.9	6.22	4.65	8.25	6.26	3.94	3.13	0.75	0.28
12x10x6	JBXH12106	277102	11.51	12.17	9.67	11.67	6.9	10.8	11.49	8.03	3.78	10.25	8.26	3.94	2.16	0.67	0.28
12x12x4	JBXH12124	277103	13.58	12.24	11.74	11.74	4.9	12.9	11.56	9.28	2.03	10.26	10.25	3.94	3.13	0.56	0.28
12x12x6	JBXH12126	277104	13.51	12.17	11.74	11.74	6.9	12.83	11.49	9.03	3.78	10.26	10.25	3.94	3.13	0.67	0.28
12x12x8	JBXH12128	277105	13.44	12.10	11.74	11.74	8.9	12.76	11.42	8.81	5.64	10.26	10.25	3.94	3.13	0.76	0.28
14x14x8	JBXH14148	277106	15.72	14.39	13.80	13.80	9.1	15.10	13.70	11.05	5.69	12.25	10.26	3.94	3.16	0.83	0.33
14x14x10	JBXH141410	277107	15.66	14.32	13.80	13.80	11.1	14.98	13.64	11.05	7.55	12.25	10.26	3.94	3.16	0.83	0.33
16x16x10	JBXH161610	277108	17.64	16.30	15.71	15.71	11.1	17.0	15.60	12.55	7.55	14.25	12.26	4.71	4.09	0.83	0.33

Scepter JBox Pole Mounting Kit

- Available in either galvanized or stainless steel (SS)
- Supplied as complete kits (sold separately)
- Works with wood, concrete, steel and composite poles
- Installs on round, square & octagonal poles up to 15"



Part Number	Product Code	Fits JBox
PMK4-12	077940	4" to 12"
PMK4-12SS	077946	4" to 12"
PMK14-16SS	277086	14" to 16"

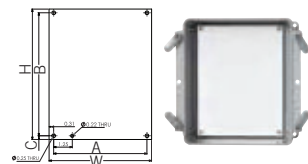


JBXH884 - JBXH887

JBXH12106 - JBXH161610

Scepter JBox Back Panels

- Made of 14 gauge carbon steel
- White epoxy powder-coated finish
- Easy to cut and drill to mount devices

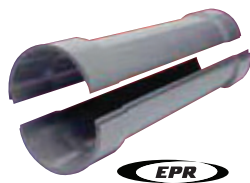


Size inches	Part Number	Product Code	W	H	A	B	C
6x6	BP66CSW	077864	4.88	6.75	4.26	6.25	0.25
8x8	BP88CSW	077861	6.88	8.75	6.26	8.25	0.25
12x10	BP1210CSW	077862	8.88	10.75	8.26	10.25	0.25
12x12	BP1212CSW	077865	10.88	10.75	10.26	10.25	0.25
14x14	BP1414CSW	077867	10.88	12.75	10.26	12.25	0.25
16x16	BP1616CSW	077868	12.88	14.75	12.26	14.25	0.25

EPR Kits for Conduit Repair

EPR Kits from IPEX are the first total repair systems for broken and damaged PVC conduit. They offer fast and easy repairs for damaged conduit caused by actions such as earth excavation, horizontal and core drilling.

All sizes are 24 inches in length.



Size (in)	Part Number	Product Code	Length (in)
1-1/4	EPR25	077982	24
1-1/2	EPR30	077981	24
2	EPR35	077980	24
2-1/2	EPR40	077960	24
3	EPR45	077958	24
4	EPR55	077957	24
5	EPR60	077956	24
6	EPR65	077955	24



SCEPTALIGHT: The Light That Lasts

Whether you're looking for economical outdoor lighting solutions, corrosion-resistant fixtures for punishing industrial environments or energy-saving LED, Sceptalight fixtures from IPEX prove themselves to be all-round performers in a variety of indoor and outdoor applications. Sceptalight fixtures are made from a glass-reinforced thermoplastic polyester resin, which enable them to stand up better to corrosive elements than metal. This thermoplastic design marries an unrivaled balance of strength, stiffness and toughness with all the benefits users appreciate of Scepter Rigid PVC Conduit and Fittings – long life, easy servicing and high impact-resistance.

Sceptalight's thermoplastic construction offers outstanding corrosion and chemical resistance. Silicone gaskets in Sceptalight fixtures – mounted at the base of the globe and within the ceiling box – provide a water- and vapour-tight seal which protects the electrical connections inside.

Wherever you need a lighting fixture that can withstand exposure to chemicals, fluids or harsh physical conditions, you'll find a home for Sceptalight.

Features and Benefits

Available in LED, compact fluorescent and incandescent to suit a variety of applications

- Stable Construction
- Adaptable
- Watertight Seal
- Long Life
- Indoor/Outdoor Use
- Corrosion Resistant
- Durable, Impact Resistant



Wet Locations

C22.2 No. 250
 CSA Listed to UL 1598
 Minimum 60°C supply conductors

CSA certified for wet locations, Sceptalight fixtures are built to withstand any environment where liquids drip, splash or flow against electrical equipment. And our polycarbonate globes are an excellent alternative to glass in punishing environments where high impact resistance is important. Sceptalight fixtures can operate in extreme temperatures and are resistant to damaging ultraviolet rays. For years, our fixtures have been proven performers on docks, wharfs, decks, walkways, shipyards and a variety of other applications where exposed to the elements.

LIGHT OPTIONS	
LED	✓
Incandescent	✓
Compact Fluorescent	✓



Hazardous Locations

CSA Listed to UL 844
 CLASS I, DIV 2 Groups A, B, C & D CLASS II,
 DIV 2 Groups F & G
 Minimum 90°C supply conductors

Sceptalight offers fixtures that are CSA certified for hazardous locations, making them the ideal choice for specific harsh industrial environments involving flammable or explosive gases, vapours or dusts. In addition to their sturdy construction, all our fixtures rated for hazardous locations include a heat-treated globe designed to endure drastic temperature changes such as direct spray of cool water on a hot fixture. Sceptalight fixtures are equipped with brass screws and inserts to ensure performance in punishing industrial conditions.

LIGHT OPTIONS	
LED	✓
Incandescent	✓
Compact Fluorescent	✓



Marine Locations

CSA C22.2 No. 250
 UL 1598, UL 1598A
 Minimum 100°C supply conductors

Sceptalight offers fixtures that meet marine location certification, UL 1598A, a supplemental approval to the wet location standard. Marine approved luminaires are rated to be used in salt water environments including conditions such as salt spray corrosion, ignition protection, UV exposure and water ingress making them the ideal choice for shipping vessels and outside marine applications. Sceptalight marine rated fixtures come with a standard clear glass globe and require a 100W incandescent bulb.

LIGHT OPTIONS	
LED	
Incandescent	✓
Compact Fluorescent	

Sceptalight LED



Introducing three Sceptalight LED products: the LED Retrofit Light Engine, the Heavy-Duty LED Light Fixture and the Utility LED Light Fixture. Sceptalight LEDs offer significant energy savings, up to 85% compared to incandescent, and up to 34% compared to fluorescents. Moreover, Sceptalight LEDs can last beyond 50,000 hours without a single need for maintenance.

Constructed of very strong and durable materials, the polycarbonate globe is impact resistant and is resistant to UV light degradation. The specially designed aluminum heat sink dissipates the heat generated by the LEDs to the exterior environment ensuring long-life and optimal performance in both hot and cold environments. Sceptalight LEDs have been tested and certified for use in indoor, outdoor, wet location, wash down, corrosive and hazardous* environments. They are certified to the latest LED light fixture standards and NEMA 4X approved.

* LVPF-LED-HAZ only

Retrofit Option

Sceptalight LEDs can easily retrofit onto existing installations for increased energy savings

Dimmable

Lights are dimmable down to 5% for maximum control of the lighting environment

Corrosion Resistant

Heat sink is coated with a durable e-coat layer that prevents corrosion

NEMA 4X and IP66 Rated

Approved for wet locations, wash down and corrosive environments

Heat Dissipation

Specially designed heat sink ensures long life and optimum performance for over 50,000 hours

Energy Efficient

1,575 lumens of light output is produced with only 15 Watts of electricity

Polycarbonate Globe

Impact and weather resistant for tough environments

Sceptalight COMPACT FLUORESCENT



Sceptalight Compact Fluorescent fixtures combine the outstanding corrosion and chemical resistance of their thermoplastic design with the energy-saving advantages of compact fluorescents. Working four to five times more efficiently per watt than incandescents, Sceptalight compact fluorescents provide 10–20 times the lamp life. Without sacrificing light levels, they use 75% less energy than incandescents for a lower total energy and maintenance cost. They are available in twin tube and quad tube configurations and include ballast.

Twin Tubes

- Available in 7, 9 & 13 Watt
- Standard Magnetic Ballast

Quad Tubes

- Available in 18 & 26 Watt
- Electronic Ballast provides "Instant Start" at temps as low as -25°C
- Offers 10,000 hours of lamp life

Stable Construction

Reinforced support feet offer secure mounting

Adaptable

Threaded conduit hubs permit connection to nonmetallic and metallic raceways

Watertight Seal

Threaded conduit hubs permit connection to nonmetallic and metallic raceways

Long Life

Sceptalight nonmetallic fixtures provide long life and easy servicing—unlike metal fixtures and guards that can corrode and seize together

Indoor/Outdoor Use

Sceptalight nonmetallic fixtures provide long life and easy servicing—unlike metal fixtures and guards that can corrode and seize together

Corrosion Resistant

Thermoplastic construction resists attack from acids, alcohols, alkalis, organic solvents, detergents/cleaners, greases and oils as well as many other types of chemicals. Withstands exposure to direct sunlight, heat, and extreme weather

Durable, Impact Resistance

High-impact nonmetallic guard resists physical impact, chemical attack and heat-induced deformation

Sceptalight INCANDESCENT



Sceptalight incandescent fixtures make the most practical choice to meet the daily needs of commercial, industrial, marine and agricultural applications. Our incandescents will take up to a 150 watt incandescent bulb and are ideal for short burn times as well as flashing and dimming applications.

For light to medium duty applications that do not require the same level of ruggedness, Sceptalight has a low-cost ceiling-mounted Utility Light Fixture available in standard, clear polycarbonate and coloured heat-resistant globes.

Installation Flexibility

Fixtures can be mounted in ceiling, wall or pendant methods to accommodate installation requirements

Indoor/Outdoor Use

Temperature and weather-resistant gaskets protect fixture from moisture penetration

Cost Effective Solution

Inexpensive to install, the fixture takes up to a 150 watt incandescent bulb

Adaptable Lighting Environments

Ideal for short burn times, flashing & dimming applications

Coloured Globes Available

Available in a range of coloured heat-resistant globes to transform the light into an indicator or warning light

Corrosion Resistant

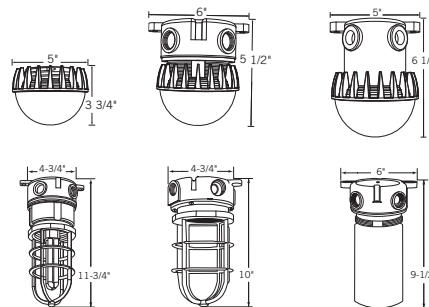
Thermoplastic construction withstands exposure to direct sunlight, heat & extreme weather

Mounting Options

Sceptalight LED can be retrofit with Ceiling Mounts only.

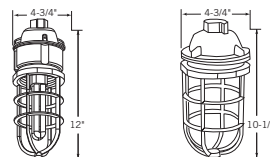
Ceiling Mount

Box with four 3/4" threaded hubs and integral mounting feet.



Pendant Mount

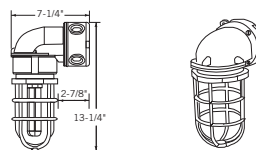
Pendant cap with 3/4" threaded hub and a locking set screw.



Pendant Mount LED available upon request.

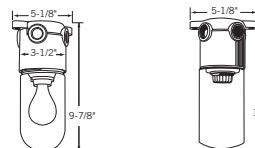
Wall Mount

Box with four 3/4" threaded hubs, 90° wall bracket and integral mounting feet.



Ceiling Mount Utility Fixtures

Box with four 3/4" threaded hubs and integral mounting feet.



Globe Options

(For incandescent and fluorescent options only)

Standard Clear Glass Globes

Ideal for general purpose area lighting for either indoor or outdoor use.

Clear Polycarbonate Globes

Impact resistant globes for added protection in case of accidental contact.

Coloured Heat-Resistant Glass Globes

Available in red, blue, green or amber – to transform the light to an indicator or warning light.



Clear Polycarbonate



Standard or Heat-treated Clear Glass



Heat-treated Red Glass



Heat-treated Blue Glass



Heat-treated Amber Glass



Heat-treated Green Glass



Wet Location Use

	Sceptalight LED	Part Number	Product Code
15W	Retrofit Light Engine	LLED-15	277120
15W	LVPF Heavy Duty Light Fixture	LVPF-LED-HAZ	277121
15W	LVPE Utility Light Fixture	LVPE-LED	277122

	Ceiling Mount with Standard Clear Glass Globe	Part Number	Product Code
150W	Incandescent	LVPF150C	077225
150W	Incandescent less guard	LVPF150LG	077237
26W	Compact Fluorescent	LVPL26C	077170
18W	Compact Fluorescent	LVPL18C	077210
13W	Compact Fluorescent	LVPL13C	077122
9W	Compact Fluorescent	LVPL9C	077121
7W	Compact Fluorescent	LVPL7C	077120

	Ceiling Mount with Clear Polycarbonate Glass Globe (no guard)	Part Number	Product Code
26W	Compact Fluorescent	LVPL26PCC	077176
18W	Compact Fluorescent	LVPL18PCC	077211
13W	Compact Fluorescent	LVPL13PCC	077165
9W	Compact Fluorescent	LVPL9PCC	077155
7W	Compact Fluorescent	LVPL7PCC	077145

	Pendant Mount with Standard Clear Glass Globe	Part Number	Product Code
150W	Incandescent	LPPL150C	077231
26W	Compact Fluorescent	LPPL26C	077184
18W	Compact Fluorescent	LPPL18C	077212
13W	Compact Fluorescent	LPPL13C	077185

	Pendant Mount with Clear Polycarbonate Globe (no guard)	Part Number	Product Code
26W	Compact Fluorescent	LPPL26PCC	077375
18W	Compact Fluorescent	LPPL18PCC	077273
13W	Compact Fluorescent	LPPL13PCC	077365
9W	Compact Fluorescent	LPPL9PCC	077355
7W	Compact Fluorescent	LPPL7PCC	077345

Wet Location Use con't

Wall Mount Fixtures

Part Number	Product Code
-------------	--------------

Use with Wet, Marine and Hazardous locations. For wall mount fixtures select and order the appropriate style (wattage and globe) ceiling mount fixture from above and add LWB150.

LWB150	077233
--------	--------

Nonmetallic Utility Light Fixture

Globe Description	Part Number	Hub Size (in)	Product Code
Fixture c/w Clear Glass Globe	LVPE150-10/15	1/2 x 3/4	077493
Fixture c/w Clear Polycarbonate Globe	LVPE150-PCC*	1/2 x 3/4	077181
Fixture c/w Heat Resistant Clear Globe	LVPE150-HRC	1/2 x 3/4	077578
Fixture c/w Heat Resistant Red Globe	LVPE150-HRR	1/2 x 3/4	077599
Fixture c/w Heat Resistant Blue Globe	LVPE150-HRB	1/2 x 3/4	077579
Fixture c/w Heat Resistant Green Globe	LVPE150-HRG	1/2 x 3/4	077597
Fixture c/w Heat Resistant Amber Globe	LVPE150-HRA	1/2 x 3/4	077598
Replacement Clear Glass Globe	LGC150		077247
Nonmetallic Clamp-on Guard	LVPUG150		077558
Fixture c/w Clear Glass Globe & Clamp-on guard	LVPE150-1015G	1/2 x 3/4	077402

* Maximum 60W incandescent lamp with polycarbonate globe



Hazardous Locations

Ceiling Mount with Frosted Polycarbonate Globe

Part Number	Product Code
-------------	--------------

15W LVPF Heavy Duty Light Fixture	LVPF-LED-HAZ	277121
-----------------------------------	--------------	--------

Ceiling Mount with Heat Resistant Glass Globe

Part Number	Product Code
-------------	--------------

150W	clear	LVPF150HRC-HAZ	077414
150W	red	LVPF150HRR-HAZ	077415
150W	Incandescent blue	LVPF150HRB-HAZ	077416
150W	green	LVPF150HRG-HAZ	077417
150W	amber	LVPF150HRA-HAZ	077494
26W	clear	LVPL26HRC-HAZ	077377
26W	red	LVPL26HRR-HAZ	077378
26W	blue	LVPL26HRB-HAZ	077379
26W	green	LVPL26HRG-HAZ	077399
26W	Compact amber	LVPL26HRA-HAZ	077400
18W	Fluorescent clear	LVPL18HRC-HAZ	077347
18W	red	LVPL18HRR-HAZ	077348
18W	blue	LVPL18HRB-HAZ	077349
18W	green	LVPL18HRG-HAZ	077353
18W	amber	LVPL18HRA-HAZ	077354

Pendant Mount with Heat Resistant Glass Globe

Part Number	Product Code
-------------	--------------

150W	Incandescent clear	LPMF150HRC-HAZ	077495
150W	red	LPMF150HRR-HAZ	077496
26W	clear	LPPL26HRC-HAZ	077407
26W	Compact red	LPPL26HRR-HAZ	077409
18W	Fluorescent clear	LPPL18HRC-HAZ	077500
18W	red	LPPL18HRR-HAZ	077498

Wall Mount Fixtures

Part Number	Product Code
-------------	--------------

For wall mount fixtures select and order the appropriate style (wattage and globe) ceiling mount fixture from above and add LWB150 Wall Mount bracket

LWB150	077233
--------	--------

Sceptalight compact fluorescent light fixtures are supplied complete with lamp and ballast.

All hazardous location fixtures are rated CLASS I, DIV 2 Groups A, B, C & D and CLASS II DIV 2 Groups F & G.



Marine Locations

Ceiling Mount

Ceiling Mount with Heat Resistant Glass Globe		Part Number	Product Code
100W	Incandescent	LVPF100C-MAR	077275

Pendant

Ceiling Mount with Heat Resistant Glass Globe		Part Number	Product Code
100W	Incandescent	LPMF100C-MAR	077276

Accessories & Components



Standard Glass Globes

Description	Part Number	Product Code
Clear	LGC150	077247

Heat Resistant Globes

Description	Part Number	Product Code
Clear	LG150T	077909
Red	LCGR150T	077239
Blue	LCGB150T	077910
Green	LCGG150T	077241
Amber	LCGA150T	077242

Polycarbonate Globes



Description	Part Number	Product Code
Clear	LPCC18	077911
Red	LPCR18	077912
Blue	LPCB18	077913
Green	LPCG18	077914
Amber	LPCA18	077915

(for use with compact fluorescent or maximum 60W incandescent lamp)



KWIKFLEX: NMLT Conduit & Fittings

Kwikflex® NMLT Type B on reels are UL listed in all lengths Available in sizes from 3/8" to 2", reels offer the end user the best possible continuous length in the market place. Its patented design offers a low profile coupling that when two conduits are connected it is hardly noticeable and allows the user to run the conduit at any length desirable. There is no longer any need for additional parts when making a long conduit run.

Kwikflex NMLT is also available in extra-flexible formulations in sizes 3/8" to 2".

Coils come packaged in easy to ship cartons.

Coils are conveniently packaged in cardboard boxes to keep the pipe clean and come with a center knock-out for easy dispensing.

Applications

- HVAC equipment
- Machine tools
- Marine equipment
- Motors & controls
- Printing equipment
- Pumps
- Refrigeration equipment
- Transformer connections
- Outdoor lighting

NMLT Flexible Conduit (Grey) Type B



Size (in)	Product Code	Length (ft)
3/8	165005	100
1/2	165007	100
3/4	165009	100
1	165011	100
1-1/4	165014	100
1-1/2	165017	50
1-1/2	165021	100
2	165020	50

NMLT Flexible Conduit Reels (Grey) Type B



Size (in)	Product Code	Length (ft)
1/2	165082	1000
3/4	165085	700
1	165090	500

NMLT Extra Flexible Tubing (Black)



Size (in)	Product Code	Length (ft)
3/8	165055	100
1/2	165057	100
3/4	165059	100
1	165061	100
1-1/4	165064	100
1-1/2	165067	100
2	165070	100

Other packages sizes available on request

NMLT 90° Elbows (Grey)



Size (in)	Part Number	Product code
3/8	LTB03/90	065306
1/2	LTB10/90	065307
3/4	LTB15/90	065310
1	LTB20/90	065312
1-1/4	LTB25/90	065314
1-1/2	LTB30/90	065317
2	LTB35/90	065320

NMLT Straight Fittings (Grey)



Size (in)	Part Number	Product code
3/8	LTS03	065326
1/2	LTS10	065327
3/4	LTS15	065330
1	LTS20	065332
1-1/4	LTS25	065334
1-1/2	LTS30	065337
2	LTS35	065340

NMLT Screw-on 90° Elbows (Grey)



Size (in)	Part Number	Product code
1/2	LTD10/90	065350
3/4	LTD15/90	065352

NMLT Screw-on Straight Fittings (Grey)



Size (in)	Part Number	Product code
1/2	LTD10	065360
3/4	LTD15	065362

NMLT Screw-on Multi Angle Fittings (Grey)



Size (in)	Part Number	Product code
1/2	LTMA10	065015
3/4	LTMA15	065016



Kwikon® ENT Savings for the Long Run

Noncorroding and nonconducting, Kwikon Electrical Nonmetallic Tubing and fittings are designed *For The Long Run*. Coiled in lengths up to 1,500 feet, the Kwikon system can span the longest run. Encased in concrete, concealed in walls or ceilings, Kwikon offers the best alternative to the labor-intensive, 10' lengths of metal conduit with its couplings and scrap.

Now you can use the Kwikon ENT system for communications (yellow), fire alarm and emergency (red), as well as power (blue) applications. It comes with color-coded stripes for easy identification on 1,500 ft., 1000 ft. and 750 ft. reels. The Kwikon ENT system is the right choice.

Kwikon Fittings

Our unique Kwikon couplings, transition couplings and connectors are designed with six 360° locking tabs to ensure a secure concrete-tight connection.

Time-consuming taping and solvent welding are eliminated. Kwikon fittings are permitted for use with all UL Listed and CSA certified ENT.



UL 514B, UL 514C
UL 1653



TC-13



C22.2 No. 21127, C22.2 No. 85
FT-4 Rated

Ease of Installation

Engineered for the rugged day-to-day challenges of the construction industry, Kwikon has already established itself as a market leader. Requiring no special tools for bending or cutting, Kwikon is easily installed.



Bending & Cutting

Kwikon's corrugated construction allows it to be easily bent by hand, no longer requiring special bending equipment traditionally required with metal conduit systems. When bending, ensure the radius of the curve is at least six times the internal diameter of the tubing.



Kwikon Slab Boxes

Kwikon slab boxes are available with or without molded connectors. For boxes without molded connectors, preassembly is quick and simple using our threaded male adapter with locknuts. This provides a secure concrete-tight connection.



Pre-Assembly of Metallic Boxes

Metal slab boxes can be quickly preassembled with Kwikon connectors. Secured with a locknut, Kwikon connectors provide a concrete-tight connection.



Installation in Sheer Walls, Interior Walls & Block Walls

Kwikon's flexibility, lightweight and ease of handling in metal, wood or block walls, combined with Kwikon connectors and couplings, substantially reduce time and labor needed to install electrical raceways.



Use in Ceilings

Kwikon ENT is permitted for use in ceilings where not subject to physical damage and in buildings 3 storeys or more provided the ceiling provides a 15-minute finish rating.



Exposed Work

ENT is permitted to be used for exposed work, where not subject to physical damage, in buildings not exceeding 3 floors above grade.

Pulling Wire

Kwikon's interior corrugated surface greatly reduces the amount of friction while pulling conductors through long runs, even with 90° bends.



Transition from ENT to EMT

Transition from ENT to EMT no longer requires solvent welding. Simply connect the Kwikon transition coupling to EMT with the set screw and snap on to ENT.



NEC, Article 362

Rules governing the installation of Kwikon ENT are covered in the 2014 National Electrical Code, ANSI/NFPA Article 362.



NEC, Article 331

Kwikon ENT is suitable for use with wiring having insulation rated 90°C maximum: As well as maximum and minimum ambient temperatures. Kwikon ENT systems are recognized for use in places of assembly as referenced in Articles 518 & 520.

Kwikon ENT may be installed exposed, in areas not subject to physical damage where the building does not exceed three floors above grade [(362.10 (1))].

Kwikon ENT may be concealed in floors, walls, ceilings and suspended ceilings where a thermal barrier of material has a minimum of 15-minute finish rating. *NOTE: Kwikon ENT may penetrate fire-rated walls, floors or ceilings with a UL Listed or recognized through-penetration fire-stop system.*

Fire Resistive Construction & Wall Assemblies

Kwikon ENT tubing, Kwikon fittings and Kwikon slab boxes are approved for use in noncombustible 2 hr. and 4 hr. fire rated floor-ceiling assemblies. Normal weight concrete cover must be provided of a minimum of 2-1/8" for 2 hr. assemblies and 2-3/8" for 4 hr. assemblies. [ULI File: E 78276 and ULC File: R-19226].

Kwikon ENT and Kwikon fittings have been investigated for use in a nonload-bearing wall and partition assembly. The report (ULC CR2196) concludes the wall assemblies with Kwikon ENT and fittings will provide a 2 hr. resistance to the passage of flame and dangerous transmission of heat.

Storage and Handling

- NOT to be installed, stored, or handled in cold temperatures below -20°C (-4°F).
- NOT to be stored outside



Kwikon ENT - Blue Stripe

	Size (in)	Length (ft)	Product Code	Weight lbs/pkg
Reel	1/2	1500	012002	165
	3/4	1000	012011	158
	1	750	012021	160
	1-1/4	1000	012047	193
	1-1/2	750	012033	205
	2	500	012044	220
	2-1/2	325	012049	70
Coil	1/2	200	012031	20
	3/4	100	012040	12.5
	1	100	012041	17
	1-1/4	500	012046	76
	1-1/2	300	012032	50.5
	2	225	012043	69.5

Wrapped in plastic, coils are easily dispensed from the center.

Kwikon ENT Reels - Color Coded

Size (in)	Length (ft)	Product Code			Weight lbs/reel
		Red	Yellow	Blue	
1/2	1500	012305	012335	012002	165
3/4	1000	012307	012337	012011	158
1	750	012310	012340	012021	160
1-1/4	1000	012037	012038	012047	193
1-1/2	750	012035	012036	012033	205
2	500	012039	012042	012044	220

Kwikon ENT - 10' Sticks with Blue Stripe

Size (in)	Length (ft)	Product Code	Crate Qty
1/2	10	012001	3,600
3/4	10	012010	2,200
1	10	012034	1,800

All Kwikon ENT is UL Listed for use in walls, floor slabs and ceilings, as outlined in Article 362 of the 2005 NEC Code.

Storage of Kwikon ENT Tubing

Manufacturer recommends that ENT tubing should not be stored outdoors where subjected to direct sunlight without protective covering, i.e. packaging or tarps.



E 122659



TC-13

Kwikon Coupling

Size (in)	Part Number	Product Code
1/2	KC10	089000
3/4	KC15	089001
1	KC20	089002
1-1/4	KC25	189670
1-1/2	KC30	189671
2	KC35	189672
2-1/2	KC40	089075



Kwikon Connector For Concrete Encasement

Size (in)	Part Number	Product Code
1/2	KTA10	089006
3/4	KTA15	089007
1	KTA20	089008
1-1/4	KTA25	189680
1-1/2	KTA30	189681
2	KTA35	189682
2-1/2	KTA40	089076



Kwikon Snap-in Connector

Size (in)	Part Number	Product Code
1/2	KTS10	089146
3/4	KTS15	089147
1	KTS20	089148



Kwikon Transition Coupling

Size (in)	Part Number	Product Code
1/2	KTC10	089012
3/4	KTC15	089013
1	KTC20	089014



E 59258, E 119384



TC-13



C22.2 No. 227.1

Kwikon 90° Stub Down Fittings

KT90 Stub Down Fittings
(Kwikon x Threaded)

Size (in)	Part Number	Product Code
1/2	KT90-10	089060
3/4	KT90-15	089059
1	KT90-20	089058

KK90 Stub Down Fittings
(Kwikon x Kwikon)

Size (in)	Part Number	Product Code
1/2	KK90-10	089055
3/4	KK90-15	089056
1	KK90-20	089057

Kwikon ENT Form Stubby



Size (in)	Part Number	Product Code
1/2	KSTB-10	089330
3/4	KSTB-15	089331
1	KSTB-20	089332
1-1/4	KSTB-25	089333

Kwikon ENT Multi-Link™
Form Stubby

Size (in)	Part Number	Product Code
1/2	MSTB-10	089031
3/4	MSTB-15	089026
1	MSTB-20	089025

Kwikon ENT Angled Form Stubby



Size (in)	Part Number	Product Code
1/2	KASTB-10	089233
3/4	KASTB-15	089234
1	KASTB-20	089235
1-1/4	KASTB-25	089236
1-1/2	KASTB-30	089238
2	KASTB-35	089239
2-1/2	KASTB-40	089240

The **ENT Support Unit (ESU)** raises the tubing or conduit up off the concrete form during the concrete pour maintaining a level raceway and allows for maximum aggregate flow and concrete consolidation.



Easy to use, the ESU snaps around any size of ENT. It is perfect for use in high rise buildings constructed with post-tensioned (PT) concrete slabs.

Features

- One size fits all 1/2" - 2"
- Saves time and labour
- Easy locking mechanism
- Securable to the concrete form
- Minimal footprint reduces amount of surface contact

Part Number	Product Code
ESU-10-35	089149

Accessories

Tapered Plugs



Size (in)	Part Number	Product Code
1/2	TP10	089003
3/4	TP15	089004
1	TP20	089005

Kwikon Cutter & Blades



Description	Part Number	Product Code
Cutter (1/2" - 1")	CLC20	089066
Blades for CLC20	SSB	089067
Cutter (1/2" - 2")	CLC35	089068
Blades for CLC35	SB35	089069

Kwikon Slab Boxes

Engineered to be rugged and durable, Kwikon slab boxes withstand construction's harshest environments. Designed by contractors for contractors, Kwikon slab boxes are available in two unique styles, with or without molded connectors. Now you can provide a complete, nonmetallic slab system. Priced competitively with traditional steel mud boxes, Kwikon slab boxes increase labor efficiencies, reducing costs.

Standard Slab Boxes

- Approved for support of ceiling fans up to 35 lbs and luminaries up to 50 lbs
- Corner and traditional mounting tabs offer contractors two options when installing to the slab deck
- Angled design guides the nail into position within the trim cover area
- Ready to install – no assembly required
- Clear Vue vacuum formed removable covers



Slab Box with Molded Connectors – Vol 44 cu in.

Hub Size (in)	Part Number	Product Code
8 x 1/2	SMBH-10	089465
8 x 3/4	SMBH-15	089462
4 x 1/2, 4 x 3/4	SMBH-10/15	089458
4 x 1/2, 2 x 3/4, 2 x 1	SMBH-10/20	089466
4 x 3/4, 4 x 1	SMBH-15/20	089464



Slab Box without Molded Connectors – Vol 44 cu in.

Knockout Size (in)	Part Number	Product Code
8 x 1/2	SMB-10	089460
4 x 1/2, 2 x 3/4, 2 x 1	SMB-10/20	089461

4" Square Slab Box



Slab Box with Molded Connectors – Vol 44 cu in.

Hub Size (in)	Part Number	Product Code
8 x 1/2	SSBH-10	089467
8 x 3/4	SSBH-15	089468
4 x 1/2, 2 x 3/4,	SSBH-10/15	089469
4 x 1/2, 2 x 3/4, 2 x 1	SSBH-10/20	089474
4 x 3/4, 4 x 1	SSBH-15/20	089475

Shallow Slab Box



Shallow Slab Box with Molded Connectors – Vol 36 cu in.

Hub Size (in)	Part Number	Product Code
8 x 1/2	SMBSH-10	089480
4 x 1/2 & 4 x 3/4	SMBSH-10/15	089481
8 x 3/4"	SMBSH-15	089482
4 x 1/2, 2 x 3/4, 2 x 1	SMBSH-10/20	089483
4 x 3/4 & 4 x 1	SMBSH-15/20	089484

Shallow Slab Box without Molded Connectors – Vol 36 cu in.

Hub Size (in)	Part Number	Product Code
8 x 1/2	SMBS-10	089490
4 x 1/2, 2 x 3/4, 2 x 1	SMBS-10/20	089491

ENT Slab Box



Slab Box with Molded Connectors (Hubs) – Vol 29 cu in.

Description	Part Number	Product Code
8 x 1/2" connectors	MBH-10	089022
8 x 3/4" connectors	MBH-15	089018
4 x 1/2", 4 x 3/4" connectors	MBH-10/15	089020
4 x 1/2", 2 x 3/4", 2 x 1" connectors	MBH-10/20	089019
4 x 3/4", 4 x 1" knockouts	MBH-15/20	089021

Slab Box with Knockouts (w/o Molded Connectors) – Vol 29 cu in.

Description	Part Number	Product Code
4 x 1/2", 2 x 3/4", 2 x 1"	MB-10/20	089016
8 x 1/2" knockouts	MB-10	089017

Concrete Wall Box

- Fully assembled and installation ready
- Perfectly suited for deep or shallow construction preferences
- Concrete-tight poly film covering the box opening
- Kwikon hubs do not protrude inside the box
- Clear Vue vacuum formed removable covers



3-1/2" Deep Boxes – Vol 38 cu in.

Size (in)	Part Number	Product Code
4 x 1/2 & 4 x 3/4	SVDBH-10/15	089496
4 x 3/4 & 4 x 1	SVDBH-15/20	089049
4 x 1/2, 2 x 3/4, 2 x 1	SVDBH-10/20	089052
8 x 3/4"	SVDBH-15	089065



2" Shallow Boxes – Vol 15 cu in.

Hub Size (in)	Part Number	Product Code
4 x 1/2	SVSBH-10	089054
4 x 3/4	SVSBH-15	089053

Floor Box Stand Kit includes FB Box

Is equipped with several height brackets which accommodate the different rebar and post-tension cable heights and slab depths found from job-site to job-site.

Product Code	Part Number
FBS-KIT	077700



FBS-KIT

For full product selection see page 51



Make the right choice!

Why is genuine Scepter the premier choice of electrical contractors?

- Performance
- Committed Sales Special
- Quality Products
- Innovation

Depend on IPEX for quality products and superior service.



- Fast and easy installation
- Restores structural integrity
- Repair made while leaving cables inside



- Wet or hazardous locations
- Water-tight seal protects from moisture & corrosion
- Impact resistant – ideal for indoor & outdoor use



- High tensile & impact strength
- Concrete-tight
- FT-4 rated



Short Form Sample Specification

General

References:

Standards referred to in this section are:

- UL 1653 Electrical Nonmetallic Tubing
- NEMA TC-13 Electrical Nonmetallic Tubing

Products

Manufacturers:

Acceptable manufacturers are listed below:

- Electrical Nonmetallic Tubing - Kwikon by IPEX
- Electrical Nonmetallic Tubing Fittings - Kwikon by IPEX
- Electrical Nonmetallic Tubing Boxes - Kwikon by IPEX

All ENT tubing, ENT fittings, ENT boxes and accessories shall be manufactured by the same company so as to form a complete ENT system.

ENT systems shall be approved for use in fire resistance rated concrete floor-ceiling assemblies with fire resistance ratings up to 4 hours.

Raceways:

ENT raceway shall be color coded to indicate the wiring system. Blue stripe for power, red stripe for fire alarm/emergency systems and yellow stripe for data/communications.

ENT raceway shall be listed to UL1653 and manufactured in accordance with NEMA TC-13.

Fittings:

ENT fittings shall be manufactured of high impact PVC

ENT fittings requirements:

Provide fittings meeting the following requirements:

- Six locking tabs located every 60° providing 360° contact
- Locking tabs shall provide a pullout of a minimum 175 ft-lb force
- Concrete tight without the need for taping
- When transitioning to EMT conduit, the transition fitting shall have six locking tabs for ENT connection and set-screw connection for EMT

Boxes:

ENT boxes shall be manufactured of high impact PVC

ENT slab box and wall box requirements:

- Slab boxes shall be approved for the purpose and concrete-tight
- Round slab boxes shall be approved for use with luminaries up to 50 lbs. and ceiling fans up to 35 lbs.
- Round slab boxes shall have threaded brass inserts for the attachment of luminaries or ceiling fans
- Slab boxes shall have eight (8) integrally molded ENT hub connectors with six locking tabs for ENT raceway connection

Installation

ENT raceways, fittings, boxes and accessories shall be installed in accordance with Article 362 of the 2002 National Electrical code.

Where ENT penetrates a fire rated wall, floor or ceiling assembly, an approved firestop system as listed in Underwriters Laboratories Building Materials Directory or other nationally recognized testing laboratory shall be used.

Not permitted for use where subject to ambient temperatures in excess of 122°F (50°C).

INEXO™

THE ICF BOX

Full flange prevents box from twisting and sinking into foam if over-tightened

INEXO provides a 1/2" drywall setback resulting in a professional finish

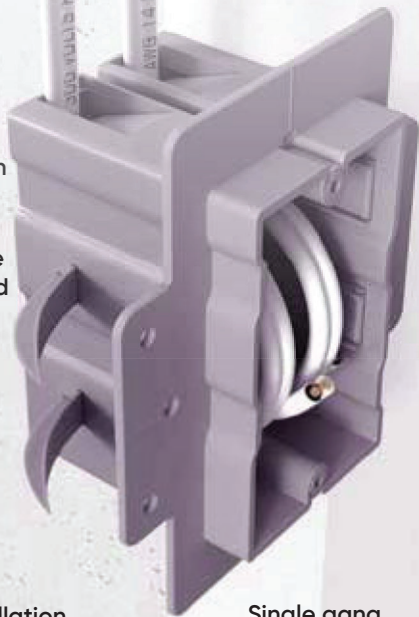
Insertion depth of 2-1/4"

'TEETH' can be easily removed and replaced

'TEETH' lock in place providing a rigid hold in the EPS foam

Greater installation versatility with 3 screw hole choices and flanges on both sides

Single gang box provides 19 cubic inch capacity



THE INNOVATIVE ELECTRICAL BOX FOR INSULATED CONCRETE FORM CONSTRUCTION

INEXO® Electrical Boxes - the only approved electrical box for ICF construction!

Available in commercial and residential styles.



INEXO Boxes for ICF Construction

Until now there have been few choices when attempting to provide a truly professional electrical box solution for Insulated Concrete Form homes.

INEXO's patented design provides a truly professional solution that works with your production schedule and provides the quality installation and finished look that builders require and owners appreciate. INEXO boxes link seamlessly with existing ICF materials, tools and methods. A complete offering designed for ICF walls allow builders to standardize on the use of electrical boxes throughout the building.

Residential (NMD Cable 14/2 - 10/3)



Description	Part Number	Product Code
Single Gang	ICF-1-RL	220000
Double Gang	ICF-2-RL	220001
Triple Gang	ICF-3-RL	220002

Commercial (AC or NMD Cable)



Description	Part Number	Product Code
Single Gang	ICF-1-CLU	220009
Double Gang	ICF-2-CLU	220010
Triple Gang	ICF-3-CLU	220011

Low Voltage Divider



Description	Part Number	Product Code
Divider	LVD-RL	220100
For residential box only		

Lightweight

Super Duct is easy to carry and install, reducing labor and costs.

Long Lengths

Super Duct is available in 10' and 20' lengths, minimizing the number of connections needed.

Bell Ends

Super Duct is bell-ended, allowing for easy assembly in the field.

High Compressive Strength

Super Duct's specially formulated compound is designed to withstand high loads.

Low Coefficient of Friction

The smooth bore of Super Duct facilitates cable pulling and eliminates costly cable damage.

Quality Control

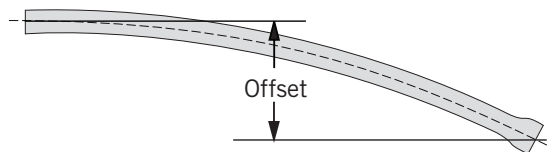
Stringent, continuous testing ensures that Super Duct is a consistently high quality product.



Field Bending

The natural flexibility of IPEX Super Duct allows field bending, so minor changes in elevation or direction can often be accommodated without the use of special sweeps or fittings. The following table indicates typical maximum offset bends that can be achieved by "cold bending."

Allowable Offset for Super Duct



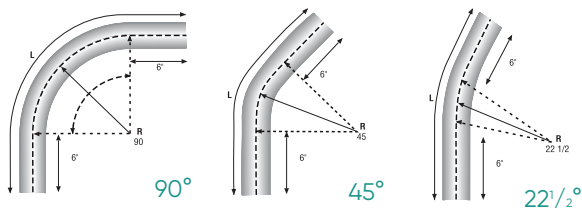
Size inches	Max Allowable Offset 10' Length (inches)	Max Allowable Offset 20' Length (inches)
2	20	79
3	14	56
3-1/2	12	49
4	11	43
5	7	35
6	7	29

NOTES:

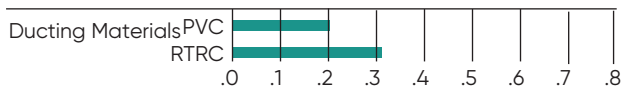
1. Axial deflection should not be attempted at the joints.
2. The above values were established for ambient temperatures above the freezing point. Increased radii may be desirable at below-freezing temperatures.

Bends

Pipe Dia. (in)	Radius of Bend (R)			
	24"	36"	48"	60"
2	90° / 45° / 22-1/2°			
3	90° / 45° / 22-1/2°			
4	90° / 45° / 22-1/2°			
5	90° / 45° / 22-1/2°			
6	90° / 45° / 22-1/2°			



Static Friction Coefficient



Concrete Encased Monolithic Installation

For multipurpose power cable and communication duct banks, spacing between ducts is critical for optimum performance. IPEX offers Vertical Lok Spacer systems to accommodate all specification and field installations.

These lightweight spacers provide the vertical and horizontal separation required in a trench.

With spacers in place on trench bottom, lay the first tier of ducts. When using a concrete base, lay the bottom tier before the base has taken initial set. Place subsequent tiers of spacers on top of the tier until the required number of ducts are installed. Then tie the entire assembly together. It is not necessary to weight or brace the bank unless the concrete mix is very wet.

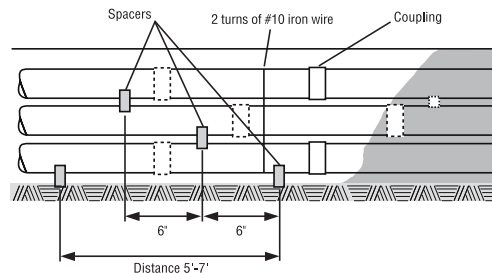


The Concrete Pour

Do not allow a heavy mass of concrete to fall directly onto the duct. If this is a possibility, use a plank to direct the concrete down the sides of the bank assembly to the trench bottom. The concrete will flow to the center of the bank and rise up in the middle, uniformly filling all open spaces. Voids can be eliminated by carefully working a long, flat slicing bar or spatula up and down between the vertical rows of ducts. Concrete should then flow between and under all of the ducts.

Duct Bank Elevation

All spacers should be staggered. It is recommended that spacers should be located approximately one-fifth of duct length from each end. Vertical Lok spacers should be located to a maximum of every 5.5 ft.

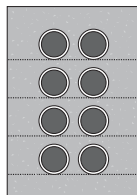


Backfilling

Backfill with regular excavated soil after the concrete has set.

Concrete Encased Tier-by-Tier Installation

The advantage of this method is the production of a solid, void-free concrete envelope. Simply pour each tier independently.



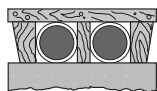
Cross-section of tier-by-tier method.

Trench Bottom

After grading the trench, place a foundation of 3" of concrete on the bottom. It should be smooth and graded.

Bank Assembly

Lay the bottom tier of ducts on the concrete base. Ducts should be spaced with wooden combs (two per duct length). Concrete the first tier level to the top of the comb. Remove combs and fill the voids. Light tamping will ensure an even surface. Repeat this sequence until the bank is built up.



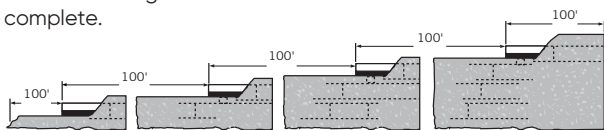
Type of wood comb used.

Concreting

If the concrete is allowed to set before assembling the next tier, the concrete will be stronger and more dense and the ducts will be aligned straighter. One problem with this method is that the bank will be in a series of layers and therefore more likely to heave and separate under frost conditions. If successive tiers are laid before the concrete has set, a satisfactory bond will be achieved by tamping the dry concrete.

Backfilling

Backfill with regular excavated soil when the bank is complete.

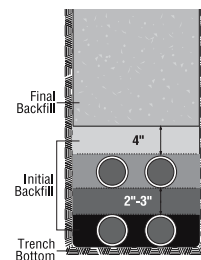


Duct is usually laid in 100' sections once the trench is excavated. Therefore, concreting can be a continuous process.

Direct Burial Installation

Trench Bottom

The trench bottom should provide a continuous, firm and uniform support for the duct bank construction. Care should be taken to avoid lumps, ridges, depressions and stones causing "point" contacts or uneven bearing.



Rock or Shale

Excavate 3" below the desired depth and bring the trench back to grade with selected tamped soil. This will provide the duct with a uniform bedding surface.

Unstable Soils

Tests should be conducted to establish the soil strength in marshy or swampy areas. It may be necessary in these conditions to dig deeper and refill with crushed stone or gravel, or to employ mats, timbers or a concrete base.

Placement of Duct

After the first tier of ducts is installed, backfill and compact as outlined below. If wood combs are employed for spacing, remove them as the backfill is placed and tamped. Then begin the next tier.

Initial Backfilling

1. Fit side and center to the top of the ducts. Use a hand tamper only to tamp firmly.
2. Backfill over the duct to the required thickness (see note) and tamp firmly, using only a hand tamper.

Final Backfilling

When the last tier is placed, hand-place the backfill to 4" over the duct with soil that does not contain stones larger than 3/8". Hand-tamping of this layer is optional, depending on the specifications.

From this point, backfill may be completed by hand or by pneumatic tamping in layers from 4" to 12" depending on the degree of compaction desired.

When placing backfill by machine, avoid the use of large rocks until a protective layer (minimum of 12") is established.

Note: In direct burial, no spacer should be used with Duct; spacers provide "point" support instead of the continuous bed required. Backfill thickness between ducts is usually 2" to 3".

Telephone Duct

Type B, Type B(HW), Type C, Type D

Telephone Duct Type B and Type B – Heavy Wall are designed for use in concrete-encased installations.

Telephone Duct Type C is designed for direct burial applications.

Telephone Duct Type D is designed for exposed and special applications, and contains 6% titanium oxide for UV resistance.

PVC Telephone Duct - 20 foot Length, Belled One End

Nominal Size	Product Code	Type	Average OD	Min. Wall	Min. ID	Feet / Pallet	Approx lbs/ft
4	008040	B	4.350	0.091	4.13	1,260	1.0
4	008041	B (HW)	4.350	0.101	4.11	1,260	1.1
4	008042	C	4.350	0.148	4.00	1,260	1.6
4	008043	C X 10'	4.350	0.148	4.00	630	1.6
4	008044	D	4.350	0.148	4.00	1,260	1.6

Performance Properties

As indicated under Telephone Standard 8546

Type	Minimum Impact Resistance @ 73.4°F	Minimum Impact Resistance @ 32°F	Minimum Pipe Stiffness Type lbs./in/in	Heat Distortion 48 hrs @ 140°F Type Load	Heat Distortion 48 hrs @ 140°F Max decr.
B	50 ft.lbs.	25 ft.lbs.	B 30	B 15	0.250"
B(HW)	50 ft.lbs.	25 ft.lbs.	B (HW) 40	B (HW) 15	0.250"
C	100 ft.lbs.	50 ft.lbs.	C 120	C 60	0.250"
D	150 ft.lbs.	75 ft.lbs.	D 120	D 60	0.250"

Type EB-20

Rated For 90°C Cable / 20-Foot Length, Belled One End

Nominal Size (in)	Product Code	Average OD	Min. Wall	Feet / Pallet	Approx Wt/lbs
2	008821	2.375	0.060	3,520	37
3	008831	3.500	0.061	1,560	56
*4	008841	4.500	0.082	1,200	93
*5	008851	5.563	0.103	460	142
*6	008861	6.625	0.125	520	202

* UL Listed

Type DB-60

Rated For 90°C Cable / 20-Foot Length, Belled One End

Nominal Size (in)	Product Code	Average OD	Min. Wall	Feet / Pallet	Approx Wt/lbs
2	008321	2.375	0.060	3,520	37
3	008731	3.500	0.092	1,560	80
4	008741	4.500	0.121	1,200	132
5	008751	5.563	0.152	460	202
6	008761	6.625	0.182	520	285

Type EB-35

Rated For 90°C Cable / 20-Foot Length, Belled One End

Nominal Size (in)	Product Code	Average OD	Min. Wall	Feet / Pallet	Approx Wt/lbs
2	008921	2.375	0.060	3,520	33
3	008931	3.500	0.076	1,560	64
4	008941	4.500	0.100	1,200	105
5	008951	5.563	0.126	460	161
6	008961	6.625	0.152	520	230

Type DB-120 Duct

Rated For 90°C Cable / 20-Foot Length, Belled One End

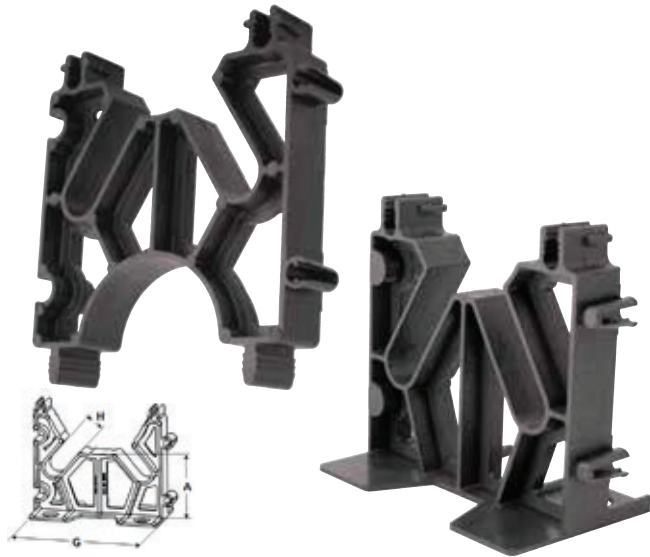
Nominal Size (in)	Product Code	Average OD	Min. Wall	Feet / Pallet	Approx Wt/lbs
2	008621	2.375	0.077	3,520	42
3	008631	3.500	0.118	1,560	96
4	008641	4.500	0.154	1,200	158
5	008651	5.563	0.191	460	240
6	008661	6.625	0.227	520	336



ASTM D1784, ASTM F512
NEMA TC-6

PVC Plastic Compounds.
Plastic Utilities Duct for Underground Installation.
Smooth-Wall Poly (Vinyl-Chloride) (PVC) conduit and Fittings for Underground Installation.

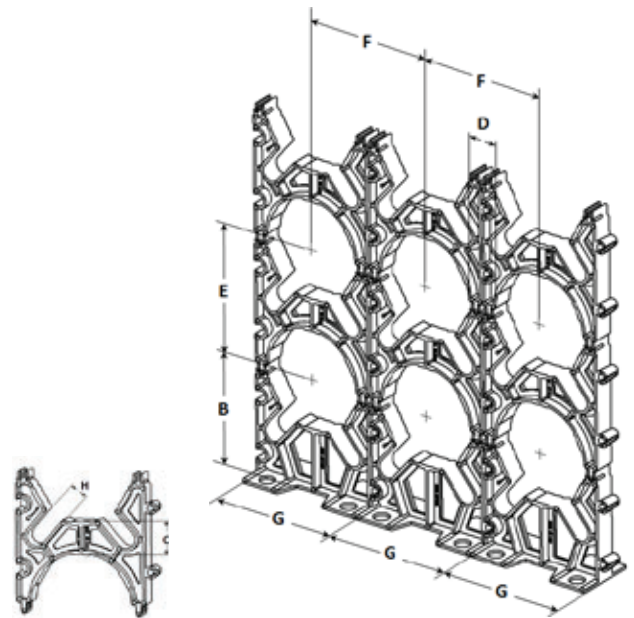
Vertical-Lok Spacers



Base

Size (inches)	BASE VERTICAL-LOK SPACERS						INTERMEDIATE VERTICAL-LOK SPACERS							
	Part Number	Product Code	A	B	H	G	Part Number	Product Code	C	D	E	F	G	H
2 x 1-1/2	BS3530	029566	3.04	4.25	0.63	3.94	IS3530	029550	1.52	1.50	3.95	3.95	3.94	0.63
2 x 2	BS3535	029567	3.04	4.25	0.63	4.47	IS3535	029551	2.03	2.06	4.48	4.48	4.47	0.63
2 x 3	BS3545	029568	3.04	4.25	0.63	5.44	IS3545	029552	3.00	3.03	5.45	5.45	5.44	0.63
* 3 x 1-1/2	BS4530	029585	3.00	5.84	0.88	5.12	* IS4530	029582	1.50	1.45	5.15	5.12	5.12	0.88
3 x 2	BS4535	029570	2.97	4.78	0.88	5.63	IS4535	029554	2.00	1.88	5.64	5.63	5.63	0.88
3 x 3	BS4545	029571	3.00	4.81	0.88	6.63	IS4545	029555	3.00	2.88	6.66	6.63	6.63	0.88
* 4 x 1	BS5520	029586	3.00	5.32	0.88	5.63	* IS5520	029583	1.00	1.03	5.66	5.63	5.63	0.88
4 x 1-1/2	BS5530	029573	3.00	5.31	0.88	6.13	IS5530	029557	1.50	1.39	6.13	6.14	6.13	0.88
4 x 2	BS5535	029574	3.06	5.38	0.88	6.63	IS5535	029558	2.00	1.88	6.64	6.63	6.63	0.88
4 x 3	BS5545	029575	3.06	5.38	0.88	7.63	IS5545	029559	3.00	2.90	7.64	7.64	7.63	0.88
* 5 x 1-1/2	BS6030	029587	3.00	5.84	0.88	7.37	-	-	-	-	-	-	-	-
5 x 2	BS6035	029577	3.13	5.94	0.88	7.88	IS6035	029561	2.25	2.15	7.89	7.89	7.88	0.88
5 x 3	BS6045	029578	3.19	6.00	0.88	8.69	IS6045	029562	3.06	2.96	8.70	8.70	8.69	0.88
6 x 1-1/2	BS6530	029579	3.02	6.38	0.88	8.21	IS6530	029563	1.50	1.38	8.24	8.22	8.21	0.88
6 x 2	BS6535	029580	3.02	6.38	0.88	8.72	IS6535	029564	2.00	1.89	8.74	8.73	8.72	0.88
6 x 3	BS6545	029581	3.00	6.38	0.88	9.75	IS6545	029565	3.00	2.90	9.77	9.77	9.75	0.88
* 8 x 2	BS8035	029293	3.00	7.25	*	10.80	* IS8035	029294	2.06	2.00	10.58	10.80	10.80	*

* Do not have rebar slots or base holes



Intermediate

* Do not have rebar slots or base holes

Challenge:

4 lane highway
6,000 cars/hour
4,000 trucks/hour
Silt and clay

Solution:

SceptaCon™ Trenchless

The SceptaCon™ Solution

PVC raceway
engineered for trenchless
applications

SceptaCon is a water-tight PVC raceway system designed specifically for horizontal directional drilling (HDD) applications. No open-trenching, traffic interruptions or costly damage to roads and sidewalks.

With its slide-in spline locking system, SceptaCon comes together quickly – no special fusion equipment or training is needed. Assembled one pipe length at a time and then pulled underground, it eliminates the need for long strings of pipe on the jobsite. Able to link seamlessly with existing PVC conduit infrastructure, SceptaCon allows utilities to standardize on PVC throughout their entire electrical system.

Locking
spline

Spline
insertion
hole

Chamfered
lip makes
joint
assembly
easy

Rounded
bell
reduces
pull forces

Rigid PVC
conduit



SceptaCon™ Trenchless Raceway Systems

SceptaCon is one of the first PVC systems designed for the rigors of trenchless applications. It links seamlessly to existing PVC conduit infrastructures and allows utility companies to standardize on PVC throughout their entire electrical systems.

SceptaCon's slide-in locking system and pre-installed, pre-lubricated gaskets allow contractors to create a water-tight seal by hand in seconds - in all temperatures - without having to worry about solvents or chemicals freezing or drying too quickly.

Its unique spline-lock snaps into a recessed opening, ensuring the spline won't get snagged during pull-through. SceptaCon's rounded bell shoulders slide easily past roots, rocks and other debris in the borehole, ensuring a smooth, easy installation. And because SceptaCon is made to the same high standards as our Scepter rigid PVC conduit, contractors and electrical utilities can be assured of the same level of quality - above ground and below.





Register your Pocket Pro today!

Fax this form to (905) 844-1504 and we'll add you to our mailing list.



Tel: (289) 881-0120
Toll Free: (800) 463-9572



IPEX
1425 North Service Rd. E.
Unit 3
Oakville, Ontario L6H 1A7



Fax: (905) 844-1504



Website: ipexna.com

PLEASE PRINT

Company

Name

Title

Address

City

State

Zip

Phone

ext.

Fax

E-mail / Website

This is a:

- Home Address Business Address Jobsite Address

Business Type:

(check 1 or 2 that best apply)

Company Classification:

- Distributor/Wholesaler
 Engineering Firm
 Contractor
 Government
 OEM - Products Manufactured: _____
 Other: _____

SIC or industry sector: _____

My primary markets are (check all that apply):

- Commercial Utility
 Residential OEM
 Industrial Institutional
 Other: _____

SALES AND CUSTOMER SERVICE

Customers call IPEX USA LLC.

Toll free: (800) 463-9572

www.ipexna.com

About the IPEX Group of Companies

As leading suppliers of thermoplastic piping systems, the IPEX Group of Companies provides our customers with some of the world's largest and most comprehensive product lines. IPEX products are backed by more than 50 years of experience. With state-of-the-art manufacturing facilities and distribution centers across North America, we have earned a reputation for product innovation, quality, end-user focus and performance.

Markets served by IPEX group products are:

- Electrical systems
- Telecommunications and utility piping systems
- Industrial process piping systems
- Municipal pressure and gravity piping systems
- Plumbing and mechanical piping systems
- Electrofusion systems for gas and water
- Industrial, plumbing and electrical cements
- Irrigation systems
- PVC, CPVC, PP, PVDF, PE, ABS, and PEX pipe and fittings

Products are manufactured by IPEX Electrical Inc. and distributed in the United States by IPEX USA LLC.

JBox™, Inexo®, Kwikflex®, Kwikon®, SceptaCon™, Sceptalight™ and SuperDuct® are trademarks of IPEX Branding Inc.

DISTRIBUTED BY:

www.ipexna.com

This literature is published in good faith and is believed to be reliable. However, it does not represent and/or warrant in any manner the information and suggestions contained in this brochure. Data presented is the result of laboratory tests and field experience. A policy of ongoing product improvement is maintained. This may result in modifications of features and/or specifications without notice