

STAINLESS STEEL FLOOR FLANGES

Features:

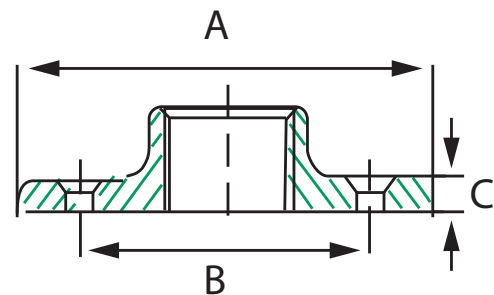
- Manufactured in type 316 stainless steel to meet any stringent sanitary condition
- Polished with standard “brite” finish to increase corrosion resistance and aesthetic appearance
- No package qty. required

Applications:

To secure stainless conduit to the wall or floor.

Industries Commonly Served:

- Food & Beverage Production
- Marine & Coastal Facilities
- Chemical Plants
- Water & Wastewater Treatment
- Pharmaceuticals & Cosmetics
- Refining & Extraction Sites
- Petrochemical Operations
- Pulp & Paper Mills
- Along with other corrosive environments



Part Number	Size (in)	A (in)	B (in)	C (in)	Mtg Hole Dimension (in ²)	Weight each per (lbs)
S60500FF00	1/2	3.000	2.100	0.360	0.264	0.750
S60700FF00	3/4	3.400	2.400	0.400	0.264	1.250
S61000FF00	1	3.930	2.800	0.400	0.264	1.400
S61200FF00	1 1/4	4.200	3.200	0.440	0.264	1.800
S61500FF00	1 1/2	4.600	3.450	0.440	0.319	2.040
S62000FF00	1 1/2	5.100	4.000	0.445	0.319	2.500

All dimensions are for informational purposes only *Tolerances +/- 5%



For more info visit atkore.com/calbrite

