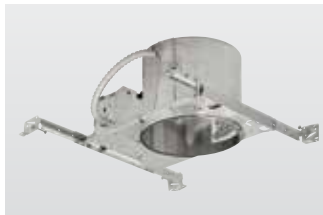


6" SHALLOW CEILINGS

SHALLOW HOUSINGS

For complete fixture, order housing with trim.

New Construction IC and Non-IC



P86-TG

Ceiling opening: 6-7/8" dia.
Plaster frame: 7-7/8" x 10-3/4"
Recessed depth: 5-1/2"
Pryouts: 1/2" and 3/4"

P86-TG

- Integral Romex clamp
- Designed for shallow plenums and 2"x 6" construction
- UL and CUL listed for damp locations and through wiring
- Can be installed in ceilings from 1/2" to 1-1/2" thick
- Integral nailer and T-bar mounting clamp
- Rated for 8 #12 90° conductors (4 in/4 out)
- Integral bar hanger

* P86-TG and P186-TG can be converted to Air-Tight in the field with P8593-01 Gasket Kit.

Remodel IC and Non-IC



P186-TG

Ceiling opening: 6-5/8" dia.
Recessed depth: 5-1/2"
Pryouts: 1/2"

P186-TG

- Retrofit version of P86-TG
- For use in existing ceilings
- Integral flange on housing
- Exclusive locking bars permit quick mounting in ceilings 1/2" to 1" thick
- UL and CUL listed for damp locations and through wiring
- Rated for 4 #12 90° conductors (2 in/2 out)
- Rated for 60° supply wires in end-of-run applications

NON-IC TRIMS

Insulation must be 3" from housing. 7-3/4" outside diameter (OD), except where indicated.



P8020-28 White
Wet location listed
Metal flange
60w A19



P8010-60 White glass
Wet location listed
Non-metallic flange
60w A19



P8028-60 White
Polycarbonate
Wet location listed
8-3/4" outside diameter
75w A19

IC TRIMS

For insulated ceilings. 7-3/4" outside diameter (OD).
IC trims may be used as non-IC trims with same wattages.



STEP BAFFLE
P8063-28 White
P8063-31 Black
75w PAR30, 65w BR30



OPEN TRIM
P8073-28 White
75w PAR30 Long Neck,
65w BR30



EYEBALL
Rotates 358°, tilts 30° max.
P6676-29 White
75w PAR30, 65w BR30



**REGRESSED
MINI EYEBALL**
Rotates 358°, tilts 30° max.
P6678-29 White
50w PAR20, R20



OPEN SHOWER TRIM
Wet location listed
P8073WL-28 White
Metal flange
50w PAR30*

