

CANOPY

Pendants have the power to change the look of a room instantly. Today, they can be seen in bath and vanity areas, kitchens and foyers – in singles or in multiples of two or more. Progress Lighting’s canopy accessory offers a convenient way to mount groupings of pendants. The round accessory accommodates 3 fixtures, while the linear option can mount either 2 or 3 pendants. Available in Brushed Nickel and Antique Bronze finishes.

Round Canopy

FINISHES

- Brushed Nickel - 09
- Antique Bronze - 20

P8403-09 Brushed Nickel
P8403-20 Antique Bronze
15-1/2" dia., 1-3/8" ht.
Round canopy kit for three pendants. Maximum pendant width for three lights is 9-1/2" each, when placed evenly. 15" max when staggered.



P8403-09



P8403-09
Shown with P5032-09 mini-pendants



P8403-20



P8403-20
Shown with P5024-2030K9 mini-pendants



P8403-09
Shown with P51965-09 mini-pendants

Linear Canopy

FINISHES

- Brushed Nickel - 09
- Antique Bronze - 20

P8404-09 Brushed Nickel
P8404-20 Antique Bronze
23-1/4" L., 4-1/4" ht.
Linear canopy can be used with two or three pendants. Maximum pendant size for two lights is 18" each. Maximum pendant size for three lights is 9" each. Staggered maximum pendant size is 15".



P8404-09



P8404-20



P8404-09
Shown with P5032-09 mini-pendants



P8404-20
Shown with P5079-20 mini-pendants



P8404-20
Shown with P5024-2030K9 mini-pendants

CANOPY

Progress Lighting's canopy accessory offers a convenient way to mount groupings of pendants. The round accessory accommodates 3 fixtures, while the linear option can mount either 2, 3, 5 or 6 pendants. Now available in Brushed Nickel, Antique Bronze and Graphite finishes.

FINISHES

- Brushed Nickel - 009
- Antique Bronze - 020
- Graphite - 143

THREE-LIGHT ROUND

P8403-143 Graphite

Round canopy can be used for three pendants. Maximum pendant width for three lights is 9-1/2" each.

Additional finish options available at progresslighting.com



P8403-143



P860005-020

THREE-LIGHT LINEAR

P8404-143 Graphite

Linear canopy can be used for two or three pendants. Maximum pendant width for two lights is 18" each. Maximum pendant width for five lights is 9" each.

Additional finish options available at progresslighting.com



P8404-143



P860005-143



P860005-009

FIVE-LIGHT LINEAR

P860004-009 Brushed Nickel

P860004-143 Graphite

P860004-020 Antique Bronze

Linear canopy can be used for three or five pendants. Maximum pendant width for three lights is 20" each. Maximum pendant width for five lights is 12" each.



P860005-009

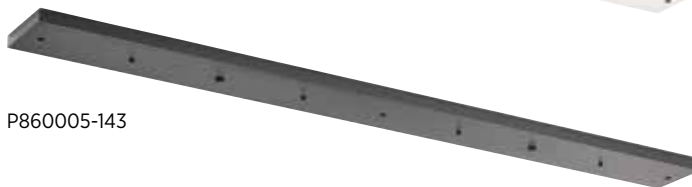
SIX-LIGHT LINEAR

P860005-009 Brushed Nickel

P860005-143 Graphite

P860005-020 Antique Bronze

Linear canopy can be used for six pendants. Maximum pendant width for six lights is 8" each.



P860005-143



P860005-020