

Raceway
Non-Metallic Raceway
PP1 PremiseTrak[®] (Latching) Flat Elbow
Base and Cover

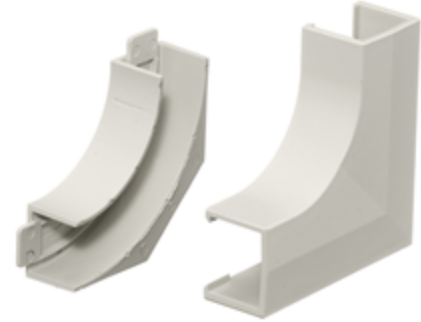
HUBBELL

Features

- Full capacity 1¼ in. bend radius flat elbow.

Ordering Information

Description	Color	UPC Number	Catalog Number
Flat Elbow Base and Cover	Office White	783585090504	PP1FEBC

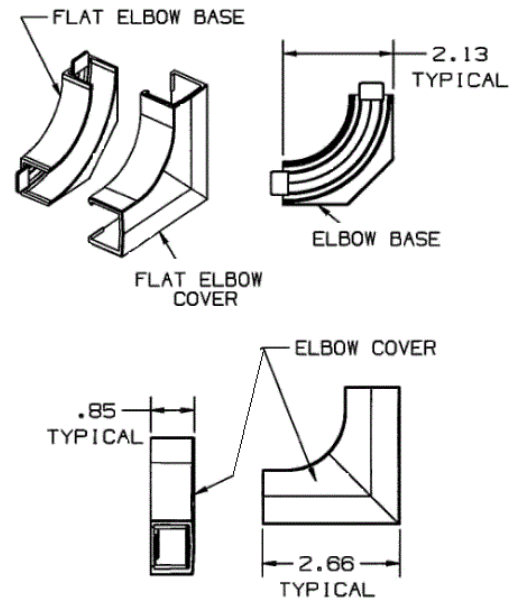


Listings

UL Listed
 CSA Certified

Specifications

Height	0.85"
Width	2.62"
Length	2.62"



Online Resources

Customer Use Drawing
 eCatalog
 Installation Instructions

Dimensions in Inches (mm)

Hubbell Wiring Device-Kellems • Hubbell Incorporated (Delaware) • 40 Waterview Drive • Shelton, CT 06484

Phone (800) 288-6000 • Fax (800) 255-1031 • Specifications subject to change without notice.

