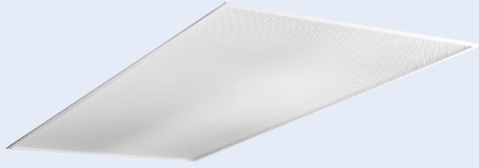


JT8

Dedicated T8 Lensed Troffer

LENSED TROFFERS



FEATURES

- Optimized for T8 lamps
- Recessed, surface, or cable mount
- Flush steel door (standard) hinges from either side for maximum flexibility
- Mitered corners standard
- Hemmed edges on 2' x 4' for contractor-friendly handling
- Mechanical light trap prevents light leak without foam gasketing
- Integral T-Bar clips (2' x 4' only)
- Housing reinforced with embossments
- Painted parts are treated with a five stage phosphate bonding process and finished with a backed white enamel
- UL listed 1598, cUL or CSA. Damp Location standard
- UL Sanitation Approved

ORDERING INFORMATION

JT8											
MODEL		NO. OF LAMPS		CEILING TYPE		SHIELDING		VOLTAGE		OPTIONS	
JT8 Dedicated T8 Lensed Troffer		2 Two 3 Three 4 Four See Product Availability table below.		G Inverted T-Bar ¹ SM Surface Mount CM Cable Mount ²		A12 Pattern 12 Acrylic Lens (Std.) A12125 Pattern 12 Acrylic Lens, 0.125" Nominal A19 Pattern 19 Acrylic Lens, 0.156" Nominal For more shielding options see page 40.		U 120V-277V 347 347V		F835 35K 78+CRI T8 Lamps Installed ³ F841 41K 78+CRI T8 Lamps Installed ³ EL Emergency Battery Pack Installed ⁴ GLR Fast Blow Fuse MS9 Master/Satellite w/9' Harness C388 3-Wire Flex C488 4-Wire Flex PAF Paint After Fabrication M4R Specular Reflector EOR End of Row (SM/CM only) ^{5,6} INT Intermediate (SM/CM only) ^{5,6} CP Chicago Plenum For more options see Technical section.	
SIZE		LAMP TYPE		DOOR		BALLAST					
22 2' × 2' 24 2' × 4'		17 2', T8: 17 Watt (2, 3, or 4 lamps) 31U1 U-Bent, 1½" Leg Spacing T8: 31 Watt (2 or 3 lamps) 32 4', T8: 32, 30, 28 or 25 Watt 32U6 U-Bent, 6" Leg Spacing T8: 32 Watt (2 lamps) 40TT Twin Tube Compact, 2G11 Base: 40 Watt (2 or 3 lamps)		FS White Flush Steel FA White Flush Aluminum For more door options contact factory.		NOTE: See Technical Section for other ballast options. E Electronic T8, Instant Start 3E 3-Lamp Electronic T8, Instant Start 4E 4-Lamp Electronic T8, Instant Start (17W lamps only) 24E (1) 2-Lamp & (1) 4-Lamp Electronic T8, Instant Start (For use with MS9) EP Electronic T8, Programmed Start 3EP 3-Lamp Electronic T8, Programmed Start 4EP 4-Lamp Electronic T8, Programmed Start EPTT Electronic Twin Tube, Programmed Start					

ACCESSORIES (ORDER SEPARATELY)

- FK22 2'x2' Single Flange Kit
FK24 2'x4' Single Flange Kit
FKCR Flange Kit Row Adaptor (All Sizes)
CM48Y2SC3F-KIT 48" Cable Mount Kit for 2' wide CM ceiling type, 3 Wire Feed Cord

¹ For drywall, order flange kit accessories separately.

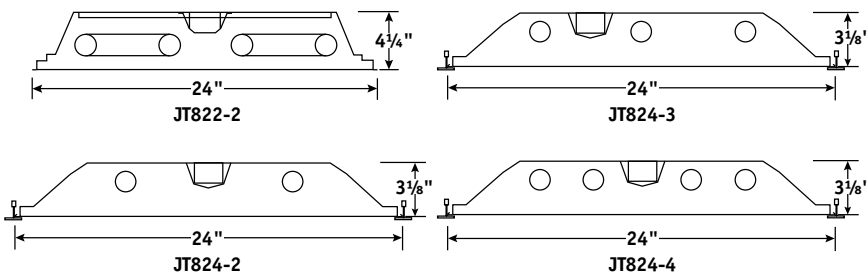
² Order hanger accessories separately.

³ Not available on 2x2

⁴ 3-lamp 2x2 fixture utilizes 2 ballast compartments and can mount any standard battery pack. 2 and 4-lamp fixtures can only mount one ballast and one 9" long or shorter battery pack. All other battery packs must be externally mounted.

⁵ Provides ends with wiring access for continuous row mounting.

⁶ Contact Hubbell representative for continuous row, 3-lamp fixtures.



PRODUCT AVAILABILITY

SIZE	NO. OF LAMPS	LAMP TYPE	GRID TRIM HEIGHT	SM Trim height
2' x 2'	2	17, 31U1, 32U6, 40TT	4 1/4"	4 5/8"
	3	17, 31U1, 40TT	4 1/4"	4 5/8"
	4	17	4 1/4"	4 5/8"
2' x 4'	2	32	3 1/8"	3 3/4"
	3	32	3 1/8"	3 3/4"
	4	32	3 1/8"	3 3/4"

Columbia
LIGHTING