



**"XAL" SERIES FIRE ALARM STATIONS
FOR CLASS I, GRP. C & D, CLASS II, GRP. E, F & G AND
CLASS III HAZARDOUS LOCATIONS**



CAUTION:

Make sure that the circuit is de-energized before starting installation or maintenance.

Verify that the installation is grounded. Failure to ground will create electrical shock hazards, which can cause serious injury and or death.

Technical information, advice and recommendations contained in these documents is based upon information that Killark believes to be reliable. All the information and advice contained in these documents is intended for use only by persons having been trained and possessing the requisite skill and know-how and to be used by such persons only at their own discretion and risk. The nature of these instructions is informative only and does not cover all of the details, variations or combinations in which this equipment may be used, its storage, delivery, installation, check out, safe operation and maintenance. Since conditions of use of the product are outside of the care, custody and control of Killark, the purchaser should determine the suitability of the product for his intended use, and assumes all risk and liability whatsoever in connection therewith.



3940 Dr. Martin Luther King Drive
St. Louis, MO 63113

P/N 00911955 FORM NO. K0993 R02/09 ECO 3-009-09

1. DIRECTIONS FOR INSTALLATION

WARNING: Before beginning installation, make sure that the supplying circuit is turned **OFF**.

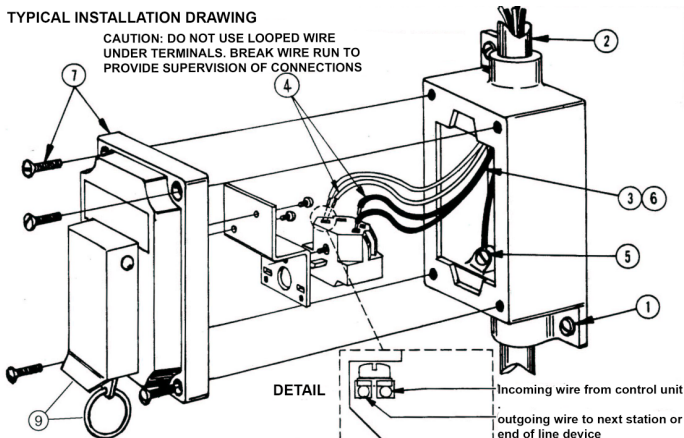
NOTE: Connect copper wire to this device. Be sure to check the catalog number on the assembly the number on the carton(s) to be certain you have the correct components.

1. Using the Installation Drawing on left as a guide, install the SWB Splice Box, using the cast-on mounting lugs. (1/4" dia. bolts are recommended for secure mounting).
2. Attach the conduit to the box.
3. Pull the wires through the conduit and into the splice box.
4. Make all wiring connections as system requires
 - a. Strip off approximately 11/32" of the wire insulation, exposing the bare conductor. Insert conductor into one side only of the N.O. or N.C contact (See detail). Tighten captive screw securely onto wire. Do the same with all other wires in the system.
5. Connect the ground wire to the ground screw in the splice box.
6. Push the connected wires into the splice box.
7. To complete the installation, install the cover assembly. The four cover bolts should be tightened so that a .0015" feeler gauge will not enter more than 1/8" at any point around the flange joint.
8. When the entire system has been wired and secured, turn **ON** supplying circuit to test the device.
9. Lift the actuator plate cover up and pull ring down. Contact is made and alarm should sound.

To reset the alarm, read and follow the instructions provided under the actuator plate's cover or see the reverse side of this IOM sheet.

NOTE: All installations must comply with applicable local and National / Canadian Electrical Codes.

TYPICAL INSTALLATION DRAWING



KILLARK®

Chalmit

Victor
Lighting

Vantage
Technology

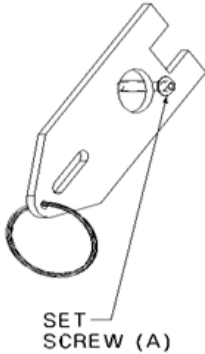
RIG POWER

HAWKE
International

3940 Dr. Martin Luther King Drive
St. Louis, MO 63113

P/N 00911955 FORM NO. K0993 R02/09 ECO 3-009-09

2. INSTRUCTIONS TO RESET THE FIRE ALARM



1. Use a hex-key (i.e, allen wrench) to back off the spring loaded set, screw (a) for about $\frac{1}{4}$ ".
2. While holding reset—shaft all the way Down, push the flat plate (with ring attached) over the shaft. THE ALARM WILL SHUT OFF.
3. Use the hex-key to tighten the set screw (A), until it stops, (do not apply excessive force).
4. Remove hex-key and push the cover down.

3. OPERATIONAL DATA

This enclosure is made of cast copper-free aluminium alloy. It is suitable for Class I, Groups C & D, Class II, Groups E, F & G and Class III hazardous locations. Like all electromechanical devices, these control stations require occasional maintenance. Parts may wear out or become defective due to adverse environmental conditions.

4. MAINTENANCE DATA

CAUTION: Disconnect this device from the supplying circuit before removing the cover. To prevent corrosion, lubricant should be occasionally applied, as follows: Killark "LUBG" lubricant to box/cover flanges; and Dow Corning Molykote 33 Grease, (light consistency) to operator shaft. Keep all flanges clean and free of scratches. Some internal service parts are available. Consult the Killark factory for parts breakdowns.

All units are rated 120 VAC, 60 HZ.
Contact Block Rating: 10 Amps continuous,
NEMA A600, NEMA P600.
Wire Range: (2) #12 thru #24 Solid or Stranded.

GENERAL INFORMATION

CATALOG NUMBER	CONDUIT SIZE	NOT ACTIVATED POSITION	ACTIVATED POSITION
XAL-53	$\frac{3}{4}$ "		

REMEMBER TO SAVE ONE OF THESE SHEETS FOR MAINTENANCE PERSONNEL.



3940 Dr. Martin Luther King Drive
St. Louis, MO 63113

P/N 00911955 FORM NO. K0993 R02/09 ECO 3-009-09

Page 3 of 3