

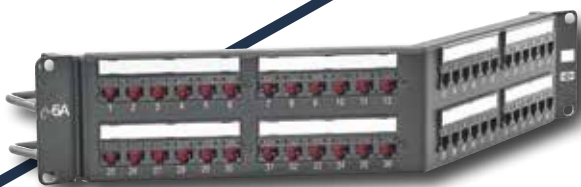
# Wave 2

## Ready to ride?

Category 6A Connectivity for 802.11ac and Beyond



802.11ac Wave 2 exceeds 1Gb per second. Hubbell's Category 6A cabling system supports up to 10GBASE-T, providing faster speeds, greater bandwidth, and the most efficient PoE delivery. Coast through 802.11ac Wave 2 and be prepared for 802.11ax with the Hubbell 25-Year Mission Critical<sup>®</sup> application assurance warranty.



**MAXIMUM BANDWIDTH • HIGHEST POWER DELIVERY**



## ISB Surface Mount Boxes

Description	1-Port	2-Port
Standard	<b>ISB1xx</b>	<b>ISB2xx</b>
UL Plenum Rated	<b>ISB1xxP</b>	<b>ISB2xxP</b>

xx = Color:

**BK** (Black), **EI** (Electric Ivory), **GY** (Gray), **OW** (Office White), **W** (White)



## NEXTSPEED® Ascent Category 6A Jacks

Unit of Measure	Catalog No.
Single pack	<b>HJ6Axx</b>
25-pack	<b>HJ6Axx25</b>

xx = Color:

**BK** (Black), **B** (Blue), **EI** (Electric Ivory), **GL** (Gold\*), **GY** (Gray), **GN** (Green), **OW** (Office White), **OR** (Orange), **P** (Purple\*), **R** (Red), **W** (White), **Y** (Yellow) \*Gold and Purple available in 25-pack only.

## TIA Guidance TSB-162-A

- Two ports of a minimum of Category 6A performance per WAP location

## Specifying Cabling per Wireless Access Point Location

- **Data rate:**  
Recommended support of 10GBASE-T speeds
- **Current carrying capacity:**  
Recommended support proposed for PoE levels of at least 49W, and up to 100W
- **Number of ports:**  
Two to support 10GBASE-T with PoE or to support link aggregation

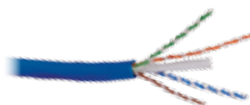


## NEXTSPEED® Ascent Category 6A Patch Panels

Format	Width Inches (mm)	Height Inches (mm)	Ports	Rack Units	Black Catalog No.	White Catalog No.
Straight*	19" (483)	1.75" (45)	24	1	<b>HP6A24</b>	<b>HP6A24W</b>
		3.50" (89)	48	2	<b>HP6A48</b>	<b>HP6A48W</b>
		7.00" (178)	96	4	<b>HP6A96</b>	-
Angled**	19" (483)	1.75" (45)	24	1	<b>HP6A24A</b>	-
		3.50" (89)	48	2	<b>HP6A48A</b>	-

\*Versions without cable management bar available as HP6A24E and HP6A48E.

\*\*HP6AxxA angled panel protrudes 4.46" from the plane of the rack. One extra inch of space is recommended between the door and panel angle.



## NEXTSPEED® Ascent Category 6A Cable

Color	Plenum Spool	Riser Spool
Blue	<b>C6ASPB</b>	<b>C6ASRB</b>
Gray	<b>C6ASPGY</b>	<b>C6ASRGY</b>
White	<b>C6ASPW</b>	<b>C6ASRW</b>
Yellow	<b>C6ASPY</b>	<b>C6ASRY</b>

Note: All category rated cable is packaged in 1000ft quantities. Made-to-order colors available.



## NEXTSPEED® Ascent Category 6A Patch Cords

Unit of Measure	Plenum	Riser
Single pack	<b>HC6AxxyyP*</b>	<b>HC6Axxyy</b>

xx = Color:

**BK** (Black), **B** (Blue), **GY** (Gray), **GN** (Green), **OR** (Orange), **PK** (Pink), **P** (Purple), **R** (Red), **W** (White), **Y** (Yellow)

yy = Standard Length:

**01** (1'), **03** (3'), **05** (5'), **07** (7'), **10** (10'), **15** (15'), **20** (20').

Made-to-order lengths are available from 25ft to 100ft in 5ft increments.

\*Plenum available in **B** (Blue), **GY** (Gray), **GN** (Green) and **Y** (Yellow) only, with lengths of **03** (3'), **05** (5'), **07** (7'), **10** (10') and **15** (15') only.