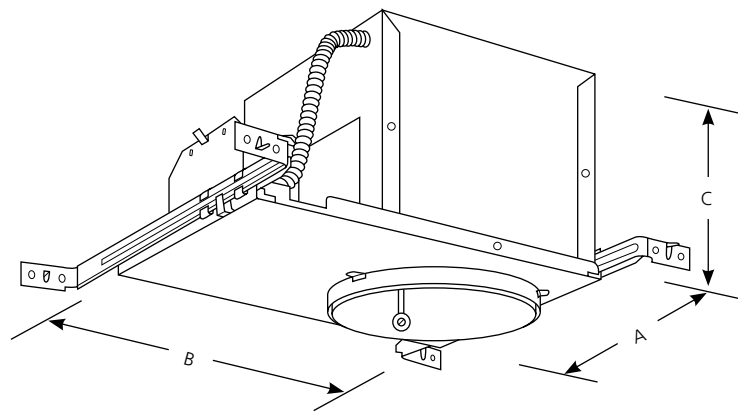


Type \_\_\_\_\_

P821-AT ☐

Catalog No.	Lamping	Dimensions (Inches)		
		A	B	C
P821-AT	See Trim Specifications	8-3/8	13	7-1/2
		Ceiling Opening 6-7/8		



### Specifications:

#### Wiring

- Universal J-box with snap-out sides
- 1/2" & 3/4" Knock outs for rigid conduit or BX fittings
- Grounding pigtail
- Knock out free integral Romex clamps
- Access door in housing for field inspection of wiring

#### Construction

- Adjustment for ceiling thickness from 1/2" to 2"
- Steel outer housing
- For new construction applications
- Notched housing for chalkline alignment
- Overspray protection
- Socket can be used as a work light
- Porcelain socket with nickel-plated brass screw shell
- Fits into 2X8 construction

#### Bar Hangers

- Integral nailers for wood joist construction
- Integral T-Bar mounting clamps
- Span 24" for T-Bar spacing
- Lock in position to secure housing

#### Labeling

- IC rated
- Complies with Washing State Energy Code (WSEC) requirement for air tight
- UL-CUL listed for damp location and through branch wiring

#### Lamp/Trim

- Socket mounts to trim for optimum performance and consistent lamp position
- Trim-Lok® action forces trim to fit snugly against the ceiling



Incandescent

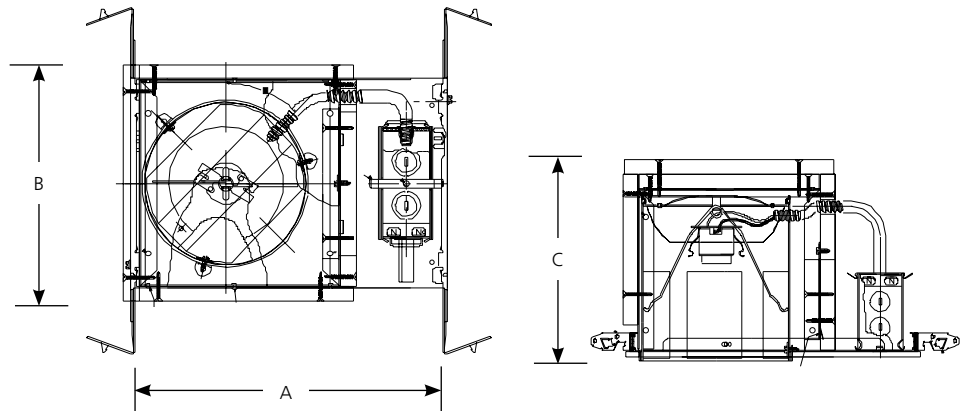
**6" Incandescent Fire-Box®**  
**Up to 2-hour fire resistant**  
**Non-IC**

**Recessed**

Type \_\_\_\_\_

P821-FB ☐

Catalog No.	Lamping	Dimensions (Inches)		
		A	B	C
P821-FB	See Trim Specifications	13-3/8	9-9/16	9-3/16
		Ceiling Opening 6-7/8		



- Trim must be ordered separately.

**Specifications:**

Wiring

- Universal J-box with snap-out sides
- 1/2" & 3/4" Knock outs for rigid conduit or BX fittings
- Grounding pigtail
- Knock out free integral Romex clamps
- Access door in housing for field inspection of wiring

Construction

- Adjustment for ceiling thickness from 1/2" to 2"
- Steel outer housing
- For new construction applications
- Notched housing for chalkline alignment
- Overspray protection
- Socket can be used as a work light
- Porcelain socket with nickel-plated brass screw shell
- Fits into 2X10 construction
- 6 pieces of UL classified fire resistant gypsum board attached to recessed housing
- Fiberglass gasket on bottom of frame to minimize heat transfer into ceiling cavity

- Integral nailers for wood joist construction. Must be reinforced with screws/nails per instruction sheet.
- Integral T-Bar mounting clamps
- Span 24" for T-Bar spacing
- Lock in position to secure housing

Labeling

- Non-IC rated; insulation must be kept at least 3" away from housing
- UL-CUL listed for damp location and feed through wiring
- UL Classified to maintain fire ratings of 1 hour or less for all UL P500 series fire rated ceiling/floor assemblies
- UL Classified to maintain fire ratings of 2 hours or less in all UL D200, G200, L200, D500, G500 and L500 series fire rated ceiling assemblies.

Lamp/Trim

- Socket mounts to trim for optimum performance and consistent lamp position
- Trim-Lok® action for trim retention forces trim to fit snugly against the ceiling

Bar Hangers



Progress Lighting  
Post Office Box 6701  
Greenville, South Carolina 29606

www.progresslighting.com  
Patent# 5,758,959

Rev. 6/07



Incandescent

**6" Air-Tight Incandescent Fire-Box®**  
**Up to 2-hour fire resistant**  
**Air-Tight Non-IC**

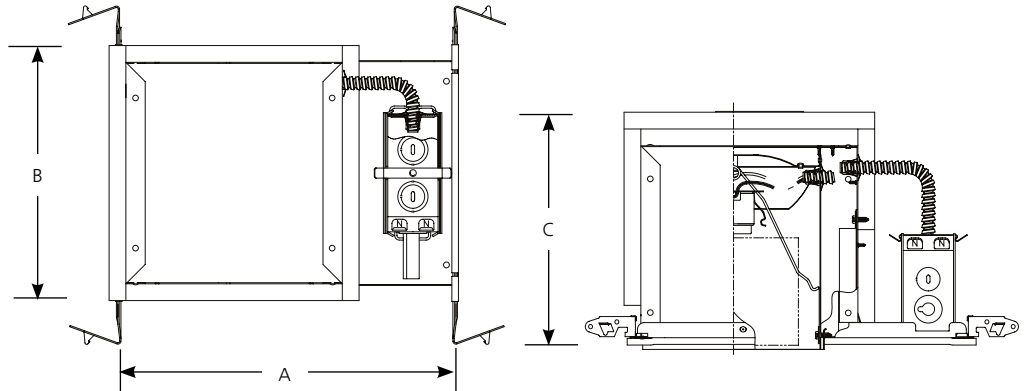
**Recessed**

Type \_\_\_\_\_

P821-FBFC ☐

**Dimensions (Inches)**

Catalog No.	Lamping	Dimensions (Inches)		
		A	B	C
P821-FBFC	See Trim Specifications	16-1/8	10-1/4	8-3/4
		Ceiling Opening 6-7/8		



- Trim must be ordered separately.

**Specifications:**

Wiring

- Universal J-box with snap-out sides
- 1/2" & 3/4" Knock outs for rigid conduit or BX fittings
- Grounding pigtail
- Knock out free integral Romex clamps
- Access door in housing for field inspection of wiring

Construction

- Adjustment for ceiling thickness from 1/2" to 2"
- Steel outer housing
- For new construction applications
- Notched housing for chalkline alignment
- Overspray protection
- Socket can be used as a work light
- Porcelain socket with nickel-plated brass screw shell
- Fits into 2X10 construction
- 6 pieces of UL classified fire resistant gypsum board attached to recessed housing
- Fiberglass gasket on bottom of frame to minimize heat transfer into ceiling cavity

Bar Hangers

- Integral nailers for wood joist construction. Must be reinforced with screws/nails per instruction sheet.
- Integral T-Bar mounting clamps

- Spans 24" spacing; ceiling wires are required to support housing in all 24" on center spacing. 4 lances in bar hanger channels provide means for attachment.
- Lock in position to secure housing
- Comes with 4 clips for mounting bar hangers to furring channels when present in a fire rated assembly. (Required for most P500 series applications).

Labeling

- Non-IC rated; insulation must be kept at least 3" away from housing
- UL-CUL listed for damp location and feed through wiring
- UL Classified to maintain fire ratings of 1 hour or less for all UL P500 series fire-rated ceiling/floor assemblies
- UL Classified to maintain fire ratings of 2 hours or less in all UL D200, G200, L200, D500, G500 and L500 series fire rated ceiling assemblies.

Lamp/Trim

- Socket mounts to trim for optimum performance and consistent lamp position
- Trim-Lok® action for trim retention forces trim to fit snugly against the ceiling
- Gasketed for Air-Tight - Allows less than 2 CFM of air loss through fixture into ceiling cavity



Progress Lighting  
Post Office Box 6701  
Greenville, South Carolina 29606

www.progresslighting.com

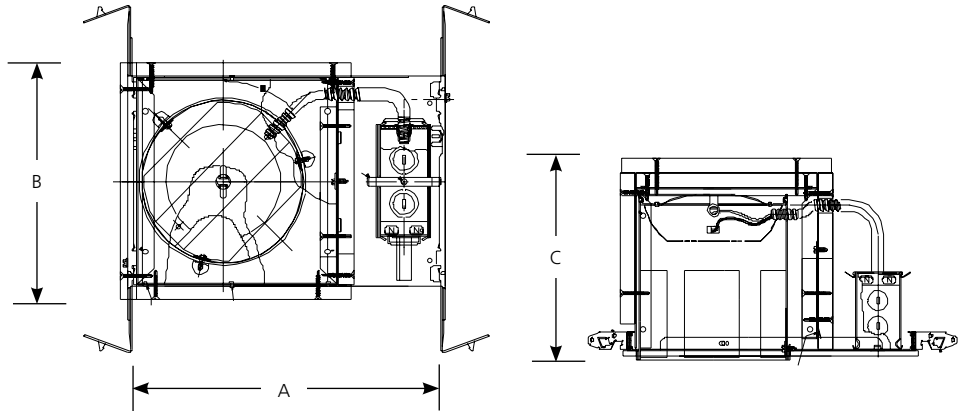
Patent# 6,357,891

Rev. 6/07

Type \_\_\_\_\_

P821-FBLED ☐

Catalog No.	Lamping	Dimensions (Inches)		
		A	B	C
P821-FBLED	See Trim Specifications	13-3/8	9-9/16	9-3/16
		Ceiling Opening 6-7/8		



- Trim must be ordered separately.

### Specifications:

#### Wiring

- Universal J-box with snap-out sides
- 1/2" & 3/4" Knock outs for rigid conduit or BX fittings
- Grounding pigtail
- Knock out free integral Romex clamps
- Access door in housing for field inspection of wiring

#### Construction

- Adjustment for ceiling thickness from 1/2" to 2"
- Steel outer housing
- For new construction applications
- Notched housing for chalkline alignment
- Fits into 2X10 construction
- 6 pieces of UL classified fire resistant gypsum board attached to recessed housing
- Fiberglass gasket on bottom of frame to minimize heat transfer into ceiling cavity

- Span 24" for T-Bar spacing
- Lock in position to secure housing

#### Labeling

- IC rated when used with the P8071 Series LED Trims
- UL-CUL listed for damp location and feed through wiring
- UL Classified to maintain fire ratings of 1 hour or less for all UL P500 series fire rated ceiling/floor assemblies
- UL Classified to maintain fire ratings of 2 hours or less in all UL D200, G200, L200, D500, G500 and L500 series fire rated ceiling assemblies.

#### Lamp/Trim

- Designed for use with P8071 Series LED Trims (purchased separately)



Progress Lighting  
701 Millennium Blvd.  
Greenville, South Carolina 29607

www.progresslighting.com  
Patent# 5,758,959

#### Bar Hangers

- Integral nailers for wood joist construction. Must be reinforced with screws/nails per instruction sheet.
- Integral T-Bar mounting clamps