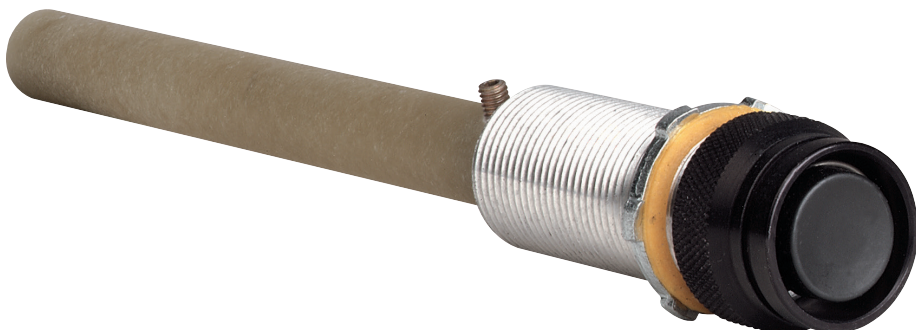




KILLARK®

INSTALLATION, OPERATION & MAINTENANCE DATA SHEET

G040 PUSHBUTTON RESET OPERATORS FOR CLASS II, GROUPS E, F, & G, & CLASS III HAZARDOUS LOCATIONS



G040 PUSHBUTTON RESET OPERATORS

CAUTION:

Before installing, make sure you are compliant with area classifications, failure to do so may result in bodily injury, death and property damage. Do not attempt installation until you are familiar with the following procedures. All installation must comply with the applicable Electrical Code.

Make sure that the circuit is de-energized before starting installation or maintenance.

Verify that the installation is grounded. Failure to ground will create electrical shock hazards, which can cause serious injury and or death.

Technical information, advice and recommendations contained in these documents is based upon information that Killark believes to be reliable. All the information and advice contained in these documents is intended for use only by persons having been trained and possessing the requisite skill and know-how and to be used by such persons only at their own discretion and risk. The nature of these instructions is informative only and does not cover all of the details, variations or combinations in which this equipment may be used, its storage, delivery, installation, check out, safe operation and maintenance. Since conditions of use of the product are outside of the care, custody and control of Killark, the purchaser should determine the suitability of the product for his intended use, and assumes all risk and liability whatsoever in connection therewith.

KILLARK®



3940 Dr. Martin Luther King Drive
St. Louis, MO 63113

P/N 00901216 FORM NO. K0304 R08/08 ECO-3-029-08

Page 1 of 3

These pushbutton operators are designed for enclosures which meet the requirements of Article 500 of the National Electrical Code. GO40 devices are to be mounted in enclosures with walls up to 1/2" thick.

1. DIRECTIONS FOR INSTALLATION

Be sure to turn **OFF** the supplying circuit before beginning installation

1. Using the installation drawings as a guide, drill and tap a 3/4" - 14 NPSM - 2A hole in the enclosure cover. The hole must be located so that a flat area is available to tighten the locknut on the inside of the cover and enough room is allowed for mounting the nameplate on the outside. For proper electrical clearance, these devices should be mounted on 2 1/2" centers and 1 3/4" from any vertical wall.
2. Remove the locknuts and spacer (if so equipped) from the assembly, place the nameplate in position on the cover and thread the assembly into the cover tightening it against the nameplate. If the optional trim locknut is used, it must be threaded onto the body before installing the body in the cover.
3. Tighten the assembly and secure it with the locknut(s). (The assembly may be staked in place, if desired).
4. Replace the spacer and/or reset plate (if so equipped), close the cover and test the button for operation.

NOTE: All installations must comply with applicable local and/or National Electrical Code.

2. OPERATIONAL DATA

GO40 operators are designed to operate with 3/4" maximum travel of the shaft. Various spacers and extensions are available to facilitate proper operation with most any type of equipment. A protective boot is also available to cover the pushbutton in wet areas.

3. MAINTENANCE DATA

"GO" Series Pushbutton Operators should be periodically checked for damage and for proper operation. The pushbutton shaft should be lubricated occasionally to prevent binding. Damaged or worn parts should be replaced promptly to maintain safe operation. Refer to the parts Drawing and to the Killark catalog for specific replacement parts and part numbers.

KILLARK®

Chalmit

Victor
Lighting

Vantage
Technology

RIG POWER

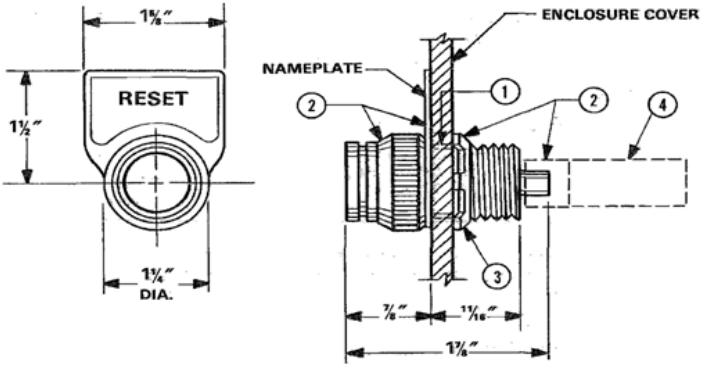
HAWKE
International

3940 Dr. Martin Luther King Drive
St. Louis, MO 63113

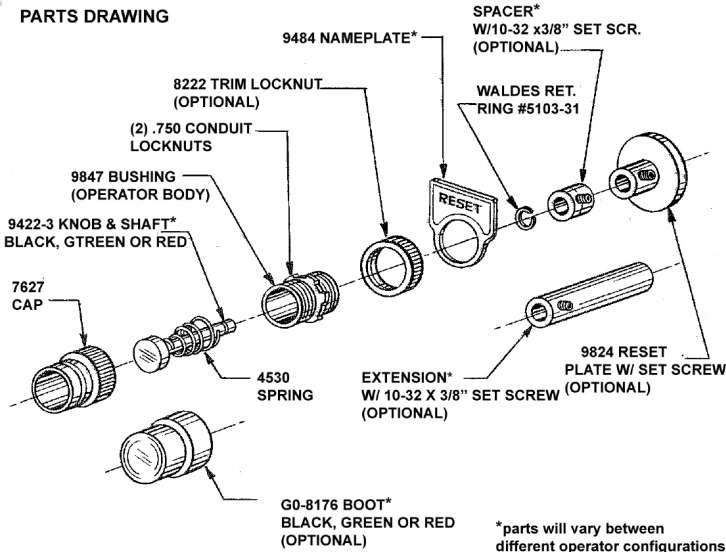
P/N 00901216 FORM NO. K0304 R08/08 ECO-3-029-08

Page 2 of 3

INSTALLATION DRAWINGS



PARTS DRAWING



KILLARK®

Chalmit

Victor
Lighting

Vantage
Technology

RIG POWER

HAWKE
International

3940 Dr. Martin Luther King Drive
St. Louis, MO 63113

P/N 00911850 FORM NO. KO687 R01/06 ECO-8-021-04

Page 3 of 3