

## Signal-Quick® Cushioned Sensor Mounts

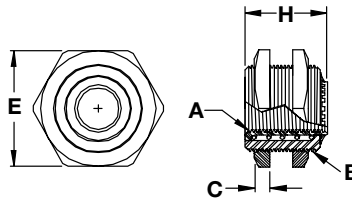
Install tubular proximity sensors with a Cushioned Sensor Mount and protect against over-travel damage. Reduces replacement expenses and downtime. Hubbell's Cushioned Sensor Mounts feature:

- Spring-loaded housing eliminates impact damage
- Reduces downtime and replacement expenses
- Reduces spare sensor inventories
- Shielded and non-shielded end caps eliminate abrasion damage
- Block style or threaded housing designs
- Anodized aluminum or stainless steel

When something out of the ordinary happens or targets over-travel, the sensor simply retracts to avoid damage. The sensor returns to its original position and the equipment continues to operate.

## Material Specifications

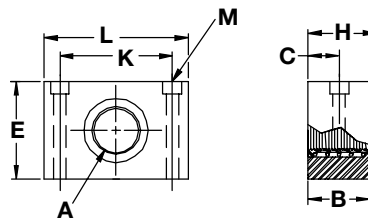
Material: Anodized aluminum housing  
Zinc-plated brass jam nuts  
CSM12LP is all Stainless Steel



**Threaded Style**

### Threaded Style

Catalog Number	A	B	C	E	H
<b>CSM8</b>	M8 x 1	M16 x 1.5	0.12" (3.1)	0.87" (22.1)	0.87" (22.1)
<b>CSM12LP</b>	M12 x 1	M18 x 1	0.16" (4.1)	0.95" (24)	0.83" (21.1)
<b>CSM18</b>	M18 x 1	M30 x 1.5	0.20" (5.1)	1.41" (35.8)	1.17" (29.7)
<b>CSM30</b>	M30 x 1.5	M47 x 1.5	0.20" (5.1)	2.01" (51)	1.47" (37.3)



**Block Style**

### Block Style

Catalog Number	A	B	C	E	H	K	L	M
<b>BCSM8</b>	M8 x 1	0.75" (19)	0.37" (9.5)	0.62" (15.8)	0.87" (22.1)	0.72" (18.4)	1.0" (25.4)	0.14" (3.6)
<b>BCSM12</b>	M12 x 1	0.75" (19)	0.37" (9.5)	1.0" (25.4)	0.87" (22.1)	0.98" (24.8)	1.5" (38.1)	0.20" (5.2)
<b>BCSM18</b>	M18 x 1	1.0" (25.4)	0.50" (12.7)	1.25" (31.7)	1.17" (29.7)	1.21" (30.7)	1.5" (38.1)	0.18" (4.6)
<b>BCSM30</b>	M30 x 1.5	1.38" (34.9)	0.68" (17.5)	2.0" (50.8)	1.47" (37.4)	2.03" (51.5)	2.5" (63.5)	0.26" (6.7)

Dimensions in Inches (mm)