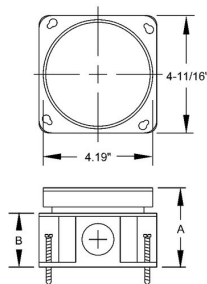


**ROUND FLOOR BOX - CONCRETE POUR****Fully Adjustable Floor Box, Stamped Steel**
N/A**A97**

Catalog #: 6255

APPLICATIONS

Round floor boxes provide flush service for power or voice/data
Floor boxes may be used for carpet or tile floor applications

PRODUCT FEATURES

Stamped steel, concrete tight, fully adjustable
Zinc coated finish
1/2", 3/4", 1", and 1-1/4" knockouts; all bottom knockouts are accessible
Brass tile flange provided with box
RACO® 6236 and 6235 carpet flange must be ordered separately (included brass tile ring must be discarded before installing carpet flange)
RACO® 6249, 6284, 6285, 6987 brass cover must be ordered separately
Interior and exterior leveling screws permit adjustment to meet finished floor
Disposable concrete cap to prevent the entry of concrete during pour included
N/A

GENERAL PRODUCT INFORMATION

Wiring System: Conduit
Country of Origin: USA

CONFIGURATION

Side Knockout(s): (2) 1/2, (2) 3/4, (2) 1, (2) 1-1/4 in.
Bottom Knockouts(s): (3) 1/2 in. & (2) 3/4 in.

PRODUCT MEASUREMENTS

Cubic Inches (cm3): 54.0 (884.8)
Wt. Ea. (Lbs.): 2.460
Product Length (in.): 6.00
Product Width (in.): 3.88
Product Height (in.): 4.81

PACKAGING

Minimum Pack Qty.: 4
Std. Pkg.: 4
Product UPC-A Labeled: Yes
Weight (Lbs. Per/C): 246.00
Ship Carton Length (in.): 12.50
Ship Carton Width (in.): 5.25
Ship Carton Height (in.): 12.50
Ctn Weight (Lbs.): 9.84
Pallet Qty: 384
UPC Number: 050169062555
I2of5: 50050169062550