

STRAIGHT SECTION



INDUSTRY STANDARDS

UL Classified for suitability as equipment ground conductor only.

NFPA 70, National Electrical Code, Article 392: Cable Trays; provides UL Classification and labels
 IEC 61537, Cable Tray Systems and Cable Ladder systems for Cable Management
 NEMA VE 1, Metal Cable Tray Systems, for materials, sizes and configurations

APPLICATION

The QUICK TRAY PRO™ cable tray routes cables through unused space while keeping them accessible for easy maintenance. Combine components to configure a system that meets application requirements.

SPECIFICATIONS

- Made of high-strength 5-mm or higher gauge steel wire
- T-weld top wire

FINISH

Pre-galvanized steel or black powder-coated finish.

BULLETIN: DQT

Standard Product

| Catalog Number | AxBxC in./mm | Description | Finish | Load per 6-ft. span lbs./ft. | Cat6 Fill Rate* .19-in. dia. cable | Cat6A Fill Rate* .23-in. dia. cable | Splice Quantity |
|----------------|--|-----------------------------|----------------|------------------------------|------------------------------------|-------------------------------------|-----------------|
| QTP2X4 | 2.00 x 4.00 x 120.00 51 x 102 x 3048 | 2 x 4-in. Straight Section | Pre-galvanized | 43 | 108 | 99 | 2 |
| QTP2X4BLK | 2.00 x 4.00 x 120.00 51 x 102 x 3048 | 2 x 4-in. Straight Section | Black | 43 | 108 | 99 | 2 |
| QTP2X6 | 2.00 x 6.00 x 120.00 51 x 152 x 3048 | 2 x 6-in. Straight Section | Pre-galvanized | 50 | 163 | 149 | 4 |
| QTP2X6BLK | 2.00 x 6.00 x 120.00 51 x 152 x 3048 | 2 x 6-in. Straight Section | Black | 50 | 163 | 149 | 4 |
| QTP2X8 | 2.00 x 8.00 x 120.00 51 x 203 x 3048 | 2 x 8-in. Straight Section | Pre-galvanized | 52 | 218 | 200 | 4 |
| QTP2X8BLK | 2.00 x 8.00 x 120.00 51 x 203 x 3048 | 2 x 8-in. Straight Section | Black | 52 | 218 | 200 | 4 |
| QTP2X12 | 2.00 x 12.00 x 120.00 51 x 305 x 3048 | 2 x 12-in. Straight Section | Pre-galvanized | 58 | 326 | 298 | 4 |
| QTP2X12BLK | 2.00 x 12.00 x 120.00 51 x 305 x 3048 | 2 x 12-in. Straight Section | Black | 58 | 326 | 298 | 4 |
| QTP2X16 | 2.00 x 16.00 x 120.00 51 x 406 x 3048 | 2 x 16-in. Straight Section | Pre-galvanized | 70 | 439 | 402 | 4 |
| QTP2X16BLK | 2.00 x 16.00 x 120.00 51 x 406 x 3048 | 2 x 16-in. Straight Section | Black | 70 | 439 | 402 | 4 |
| QTP2X18 | 2.00 x 18.00 x 120.00 51 x 457 x 3048 | 2 x 18-in. Straight Section | Pre-galvanized | 70 | 495 | 452 | 4 |
| QTP2X18BLK | 2.00 x 18.00 x 120.00 51 x 457 x 3048 | 2 x 18-in. Straight Section | Black | 70 | 495 | 452 | 4 |
| QTP2X20 | 2.00 x 20.00 x 120.00 51 x 508 x 3048 | 2 x 20-in. Straight Section | Pre-galvanized | 73 | 550 | 503 | 5 |
| QTP2X20BLK | 2.00 x 20.00 x 120.00 51 x 508 x 3048 | 2 x 20-in. Straight Section | Black | 73 | 550 | 503 | 5 |
| QTP2X22 | 2.00 x 22.00 x 120.00 51 x 559 x 3048 | 2 x 22-in. Straight Section | Pre-galvanized | 73 | 600 | 554 | 5 |
| QTP2X22BLK | 2.00 x 22.00 x 120.00 51 x 559 x 3048 | 2 x 22-in. Straight Section | Black | 73 | 600 | 554 | 5 |
| QTP2X24 | 2.00 x 24.00 x 120.00 51 x 610 x 3048 | 2 x 24-in. Straight Section | Pre-galvanized | 75 | 660 | 604 | 5 |
| QTP2X24BLK | 2.00 x 24.00 x 120.00 51 x 610 x 3048 | 2 x 24-in. Straight Section | Black | 75 | 660 | 604 | 5 |
| QTP4X4 | 4.00 x 4.00 x 120.00 102 x 102 x 3048 | 4 x 4-in. Straight Section | Pre-galvanized | 45 | 205 | 188 | 4 |
| QTP4X4BLK | 4.00 x 4.00 x 120.00 102 x 102 x 3048 | 4 x 4-in. Straight Section | Black | 45 | 205 | 188 | 4 |
| QTP4X6 | 4.00 x 6.00 x 120.00 102 x 152 x 3048 | 4 x 6-in. Straight Section | Pre-galvanized | 49 | 310 | 285 | 5 |
| QTP4X6BLK | 4.00 x 6.00 x 120.00 102 x 152 x 3048 | 4 x 6-in. Straight Section | Black | 49 | 310 | 285 | 5 |
| QTP4X8 | 4.00 x 8.00 x 120.00 102 x 203 x 3048 | 4 x 8-in. Straight Section | Pre-galvanized | 78 | 416 | 380 | 6 |

| Catalog Number | AxBxC in./mm | Description | Finish | Load per 6-ft. span lbs./ft. | Cat6 Fill Rate* .19-in. dia. cable | Cat6A Fill Rate* .23-in. dia. cable | Splice Quantity |
|----------------|---|-----------------------------|----------------|------------------------------|------------------------------------|-------------------------------------|-----------------|
| QTP4X8BLK | 4.00 x 8.00 x 120.00 102 x 203 x 3048 | 4 x 8-in. Straight Section | Black | 78 | 416 | 380 | 6 |
| QTP4X12 | 4.00 x 12.00 x 120.00 102 x 305 x 3048 | 4 x 12-in. Straight Section | Pre-galvanized | 78 | 621 | 568 | 6 |
| QTP4X12BLK | 4.00 x 12.00 x 120.00 102 x 305 x 3048 | 4 x 12-in. Straight Section | Black | 78 | 621 | 568 | 6 |
| QTP4X16 | 4.00 x 16.00 x 120.00 102 x 406 x 3048 | 4 x 16-in. Straight Section | Pre-galvanized | 108 | 837 | 765 | 7 |
| QTP4X16BLK | 4.00 x 16.00 x 120.00 102 x 406 x 3048 | 4 x 16-in. Straight Section | Black | 108 | 837 | 765 | 7 |
| QTP4X18 | 4.00 x 18.00 x 120.00 102 x 457 x 3048 | 4 x 18-in. Straight Section | Pre-galvanized | 116 | 942 | 862 | 7 |
| QTP4X18BLK | 4.00 x 18.00 x 120.00 102 x 457 x 3048 | 4 x 18-in. Straight Section | Black | 116 | 942 | 862 | 7 |
| QTP4X20 | 4.00 x 20.00 x 120.00 102 x 508 x 3048 | 4 x 20-in. Straight Section | Pre-galvanized | 116 | 1047 | 958 | 7 |
| QTP4X20BLK | 4.00 x 20.00 x 120.00 102 x 508 x 3048 | 4 x 20-in. Straight Section | Black | 116 | 1047 | 958 | 7 |
| QTP4X22 | 4.00 x 22.00 x 120.00 102 x 559 x 3048 | 4 x 22-in. Straight Section | Pre-galvanized | 116 | 1152 | 1054 | 8 |
| QTP4X22BLK | 4.00 x 22.00 x 120.00 102 x 559 x 3048 | 4 x 22-in. Straight Section | Black | 116 | 1152 | 1054 | 8 |
| QTP4X24 | 4.00 x 24.00 x 120.00 102 x 610 x 3048 | 4 x 24-in. Straight Section | Pre-galvanized | 116 | 1257 | 1150 | 8 |
| QTP4X24BLK | 4.00 x 24.00 x 120.00 102 x 610 x 3048 | 4 x 24-in. Straight Section | Black | 116 | 1257 | 1150 | 8 |
| QTP6X8 | 6.00 x 8.00 x 120.00 152 x 203 x 3048 | 6 x 8-in. Straight Section | Pre-galvanized | 116 | 623 | 570 | 6 |
| QTP6X8BLK | 6.00 x 8.00 x 120.00 152 x 203 x 3048 | 6 x 8-in. Straight Section | Black | 116 | 623 | 570 | 6 |
| QTP6X12 | 6.00 x 12.00 x 120.00 152 x 305 x 3048 | 6 x 12-in. Straight Section | Pre-galvanized | 123 | 931 | 852 | 6 |
| QTP6X12BLK | 6.00 x 12.00 x 120.00 152 x 305 x 3048 | 6 x 12-in. Straight Section | Black | 123 | 931 | 852 | 6 |
| QTP6X16 | 6.00 x 16.00 x 120.00 152 x 406 x 3048 | 6 x 16-in. Straight Section | Pre-galvanized | 123 | 1255 | 1148 | 7 |
| QTP6X16BLK | 6.00 x 16.00 x 120.00 152 x 406 x 3048 | 6 x 16-in. Straight Section | Black | 123 | 1255 | 1148 | 7 |
| QTP6X18 | 6.00 x 18.00 x 120.00 152 x 457 x 3048 | 6 x 18-in. Straight Section | Pre-galvanized | 127 | 1413 | 1292 | 7 |
| QTP6X18BLK | 6.00 x 18.00 x 120.00 152 x 457 x 3048 | 6 x 18-in. Straight Section | Black | 127 | 1413 | 1292 | 7 |
| QTP6X20 | 6.00 x 20.00 x 120.00 152 x 508 x 3048 | 6 x 20-in. Straight Section | Pre-galvanized | 127 | 1571 | 1437 | 7 |
| QTP6X20BLK | 6.00 x 20.00 x 120.00 152 x 508 x 3048 | 6 x 20-in. Straight Section | Black | 127 | 1571 | 1437 | 7 |
| QTP6X22 | 6.00 x 22.00 x 120.00 152 x 559 x 3048 | 6 x 22-in. Straight Section | Pre-galvanized | 127 | 1728 | 1580 | 8 |
| QTP6X22BLK | 6.00 x 22.00 x 120.00 152 x 559 x 3048 | 6 x 22-in. Straight Section | Black | 127 | 1728 | 1580 | 8 |
| QTP6X24 | 6.00 x 24.00 x 120.00 152 x 610 x 3048 | 6 x 24-in. Straight Section | Pre-galvanized | 150 | 1886 | 1726 | 8 |
| QTP6X24BLK | 6.00 x 24.00 x 120.00 152 x 610 x 3048 | 6 x 24-in. Straight Section | Black | 150 | 1886 | 1726 | 8 |

* Based on 50% fill rate.

Quick Tray Weight Guide

| Catalog Number (Plated) | Catalog Number (Black) | Nominal Width (inch) | Weight per section (lbs) | Cable qty @ 75% fill (CAT 6) | Load (lbs./ft.) | Splice qty. per joint |
|-------------------------|------------------------|----------------------|--------------------------|------------------------------|-----------------|-----------------------|
| QTP2X12 | QTP2X12BLK | 12 | 12 | 326 | 58 | 4 |
| QTP2X16 | QTP2X16BLK | 16 | 15 | 439 | 70 | 4 |
| QTP2X18 | QTP2X18 | 18 | 23 | 495 | 70 | 4 |
| QTP2X20 | QTP2X20BLK | 20 | 25 | 550 | 73 | 5 |
| QTP2X22 | QTP2X22BLK | 22 | 27 | 600 | 73 | 5 |
| QTP2X24 | QTP2X24BLK | 24 | 31 | 660 | 75 | 5 |
| QTP2X4 | QTP2X4BLK | 4 | 7 | 108 | 45 | 2 |
| QTP2X6 | QTP2X6BLK | 6 | 9 | 163 | 50 | 4 |
| QTP2X8 | QTP2X8BLK | 8 | 10.5 | 218 | 52 | 4 |
| QTP4X12 | QTP4X12BLK | 12 | 23 | 621 | 78 | 6 |
| QTP4X16 | QTP4X16BLK | 16 | 27 | 837 | 108 | 7 |
| QTP4X18 | QTP4X18BLK | 18 | 29 | 942 | 116 | 7 |
| QTP4X20 | QTP4X20BLK | 20 | 31 | 1047 | 116 | 7 |
| QTP4X22 | QTP4X22BLK | 22 | 33 | 1152 | 116 | 8 |
| QTP4X24 | QTP4X24BLK | 24 | 35 | 1257 | 116 | 8 |
| QTP4X4 | QTP4X4BLK | 4 | 12 | 205 | 44 | 4 |
| QTP4X6 | QTP4X6BLK | 6 | 13 | 310 | 49 | 5 |
| QTP4X8 | QTP4X8BLK | 8 | 15 | 416 | 78 | 6 |
| QTP6X12 | QTP6X12BLK | 12 | 27 | 931 | 23 | 6 |
| QTP6X16 | QTP6X16BLK | 16 | 31 | 1255 | 123 | 7 |
| QTP6X18 | QTP6X18BLK | 18 | 33 | 1413 | 127 | 7 |
| QTP6X20 | QTP6X20BLK | 20 | 35 | 1571 | 127 | 7 |
| QTP6X22 | QTP6X22BLK | 22 | 37 | 1728 | 127 | 8 |
| QTP6X24 | QTP6X24BLK | 24 | 39 | 1886 | 150 | 8 |
| QTP6X8 | QTP6X8BLK | 8 | 23 | 623 | 116 | 6 |

SPLICE KIT



Splice Kits are used for bolting turns, bends and tees; connecting QUICK TRAY PRO™ sections; and fastening splice bars. Kit includes three-piece staked bolt, washer and nut.

BULLETIN: DQT

| Catalog Number | AxBxC in./mm | Description | Pkg. Qty. |
|----------------|-------------------------------------|--------------------|-----------|
| QTPBNWK | 2.00 x 4.00 x 2.00 51 x 102 x 51 | Splice Kit (Zinc) | 50 |
| QTPBNWKBLK | 2.00 x 4.00 x 2.00 51 x 102 x 51 | Splice Kit (Black) | 50 |

SPLICE WASHER

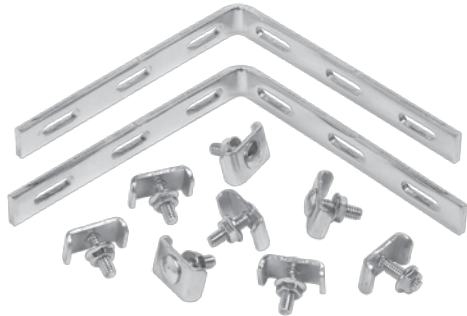


QUICK TRAY PRO Splice Washers are used with QTPBNWK/ QTPBNWKBLK Splice Kits for bolting turns, bends, and tees; connecting tray sections; and fastening splice bars.

BULLETIN: DQT

| Catalog Number | AxBxC in./mm | Description | Finish | Pkg. Qty. |
|----------------|---------------------------------------|---------------|----------------|-----------|
| QTPSSW3 | 4.00 x 4.00 x 8.00 102 x 102 x 203 | Splice Washer | Pre-galvanized | 50 |
| QTPSSW3BLK | 4.00 x 4.00 x 8.00 102 x 102 x 203 | Splice Washer | Black | 50 |

SPLICE BARS



QUICK TRAY PRO Splice Bars provide extra support and stability to tray sides when connecting tray sections with splice washers. Universal bars can be cut to fit with bolt cutters and bent for use in tees and elbows. Made of plated steel. Requires QTPSSW3/ QTPSSW3BLK Splice Washers and QTPBNWK/QTPBNWKBLK Splice Kits to fasten to side of tray.

BULLETIN: DQT

| Catalog Number | AxBxC in./mm | Description | Pkg. Qty. |
|----------------|--|---|-----------|
| QTPUS10 | 4.00 x 13.00 x 4.00 102 x 330 x 102 | Splice Bar, 10 in. Universal (Zinc) | 50 |
| QTPUS10BLK | 4.00 x 13.00 x 4.00 102 x 330 x 102 | Splice Bar, 10 in. Universal (Black) | 50 |
| QTP90TKIT | 1.00 x 5.00 x 5.00 25 x 127 x 127 | Includes: (2) 90° bends; (8) washers, (8) nuts, (8) bolts (Zinc) | 1 |
| QTP90TKITBLK | 1.00 x 5.00 x 5.00 25 x 127 x 127 | Includes: (2) 90° bends; (8) washers, (8) nuts, (8) bolts (Black) | 1 |

TRAPEZE HANGING CLIP



For trapeze hung QUICK TRAY PRO™ installations. Use with 1/4- or 3/8-in. threaded rod; obtain locally. Poly grommet retains tray in slot-unsnap to detach one side of tray for loading cables. Corrosion-resistant pre-galvanized finish.

BULLETIN: DQT

| Catalog Number | AxBxC in./mm | Description | Pkg. Qty. |
|----------------|---------------------------------------|---------------------------------------|-----------|
| QTPTH | 3.00 x 6.00 x 14.00 76 x 152 x 356 | Trapeze Hanging Clips, Pre-galvanized | 50 |
| QTPTHBLK | 3.00 x 6.00 x 14.00 76 x 152 x 356 | Trapeze Hanging Clips, Black | 50 |

C-BRACKET



For QUICK TRAY PRO installations under ceiling or overhangs. Use with tray widths up to 12 in. (305 mm). To secure tray to bracket, use one QTPSSW3/QTPSSW3BLK Splice Washer and one QTPBNWK/QTPBNWKBLK Splice Kit on sizes up to 8 in. (203 mm); use two on 12-in. (305-mm) trays. Can be stacked for multi-level tray installations. Corrosion resistant plated finish.

BULLETIN: DQT

| Catalog Number | AxBxC in./mm | Description | Finish | Tray Width in./mm |
|----------------|---------------------------------------|-------------|----------------|-------------------|
| QTPCB4 | 8.00 x 1.00 x 4.00 203 x 25 x 102 | C-Bracket | Pre-galvanized | 4 102 |
| QTPCB4BLK | 8.00 x 1.00 x 4.00 203 x 25 x 102 | C-Bracket | Black | 4 102 |
| QTPCB8 | 8.00 x 1.00 x 8.00 203 x 25 x 203 | C-Bracket | Pre-galvanized | 8 203 |
| QTPCB8BLK | 8.00 x 1.00 x 8.00 203 x 25 x 203 | C-Bracket | Black | 8 203 |
| QTPCB12 | 8.00 x 1.00 x 12.00 203 x 25 x 305 | C-Bracket | Pre-galvanized | 12 305 |
| QTPCB12BLK | 8.00 x 1.00 x 12.00 203 x 25 x 305 | C-Bracket | Black | 12 305 |

CENTER HANGERS



Use with up to 1/2-in. threaded rod (obtain locally). Only one rod needed to suspend tray. Snap-on attachment holds QUICK TRAY PRO cable tray secure without nuts and bolts. For use with 4- to 24-in. (102- to 610-mm) tray widths. Can be used for multiple-level installations; 1/2-in. threaded rod recommended. Corrosion-resistant plated finish.

BULLETIN: DQT

| Catalog Number | AxBxC in./mm | Description | Finish | Tray Width in./mm |
|----------------|---------------------------------------|---------------|----------------|-------------------|
| QTPCH4 | 7.50 x 4.00 x 1.00 191 x 102 x 25 | Center Hanger | Pre-galvanized | 4 102 |
| QTPCH4BLK | 7.50 x 4.00 x 1.00 191 x 102 x 25 | Center Hanger | Black | 4 102 |
| QTPCH12 | 7.50 x 12.00 x 1.00 191 x 305 x 25 | Center Hanger | Pre-galvanized | 12 305 |
| QTPCH12BLK | 7.50 x 12.00 x 1.00 191 x 305 x 25 | Center Hanger | Black | 12 305 |
| QTPCH24 | 7.50 x 24.00 x 1.00 191 x 610 x 25 | Center Hanger | Pre-galvanized | 24 610 |
| QTPCH24BLK | 7.50 x 24.00 x 1.00 191 x 610 x 25 | Center Hanger | Black | 24 610 |

L-BRACKETS



L-Brackets mount directly to wall for overhead mounting. Corrosion-resistant plated finish. Fasten QUICK TRAY PRO™ to bracket with one QTPSSW3/QTPSSW3BLK Splice Washer and one QTPBNWK/QTPBNWKBLK Splice Kit on sizes up to 8 in. (203 mm); use two on 12-in. (305-mm) trays.

BULLETIN: DQT

| Catalog Number | AxBxC in./mm | Description | Finish |
|----------------|---------------------------------------|------------------|----------------|
| QTPLB4 | 6.00 x 1.00 x 4.00 152 x 25 x 102 | 4-in. L-Bracket | Pre-galvanized |
| QTPLB4BLK | 6.00 x 1.00 x 4.00 152 x 25 x 102 | 4-in. L-Bracket | Black |
| QTPLB8 | 6.00 x 1.00 x 8.00 152 x 25 x 203 | 8-in. L-Bracket | Pre-galvanized |
| QTPLB8BLK | 6.00 x 1.00 x 8.00 152 x 25 x 203 | 8-in. L-Bracket | Black |
| QTPLB12 | 6.00 x 1.00 x 12.00 152 x 25 x 305 | 12-in. L-Bracket | Pre-galvanized |
| QTPLB12BLK | 6.00 x 1.00 x 12.00 152 x 25 x 305 | 12-in. L-Bracket | Black |

REINFORCED WALL BRACKET



For heavy-duty QUICK TRAY PRO applications. Mounts on 1-5/8-in. wide metal channel. To secure tray to bracket, use one QTPSSW3/QTPSSW3BLK Splice Washer and one QTPBNWK/QTPBNWKBLK Splice Kit on sizes up to 8 in. (203 mm); use two on 12-in. (305-mm) and wider trays. Made of plated steel for corrosion resistance.

BULLETIN: DQT

| Catalog Number | AxBxC in./mm | Description | Finish | Width in./mm |
|----------------|---------------------------------------|-------------------------|----------------|--------------|
| QTPRWB4 | 3.00 x 1.00 x 4.00 76 x 25 x 102 | Reinforced Wall Bracket | Pre-galvanized | 4 102 |
| QTPRWB4BLK | 3.00 x 1.00 x 4.00 76 x 25 x 102 | Reinforced Wall Bracket | Black | 4 102 |
| QTPRWB6 | 3.00 x 1.00 x 6.00 76 x 25 x 152 | Reinforced Wall Bracket | Pre-galvanized | 6 152 |
| QTPRWB6BLK | 3.00 x 1.00 x 6.00 76 x 25 x 152 | Reinforced Wall Bracket | Black | 6 152 |
| QTPRWB8 | 4.00 x 1.00 x 8.00 102 x 25 x 203 | Reinforced Wall Bracket | Pre-galvanized | 8 203 |
| QTPRWB8BLK | 4.00 x 1.00 x 8.00 102 x 25 x 203 | Reinforced Wall Bracket | Black | 8 203 |
| QTPRWB12 | 6.00 x 1.00 x 12.00 152 x 25 x 305 | Reinforced Wall Bracket | Pre-galvanized | 12 305 |
| QTPRWB12BLK | 6.00 x 1.00 x 12.00 152 x 25 x 305 | Reinforced Wall Bracket | Black | 12 305 |
| QTPRWB16 | 9.00 x 1.00 x 16.00 229 x 25 x 406 | Reinforced Wall Bracket | Pre-galvanized | 16 406 |
| QTPRWB16BLK | 9.00 x 1.00 x 16.00 229 x 25 x 406 | Reinforced Wall Bracket | Black | 16 406 |
| QTPRWB18 | 3.00 x 8.00 x 3.00 76 x 203 x 76 | Reinforced Wall Bracket | Pre-galvanized | 18 457 |
| QTPRWB18BLK | 3.00 x 8.00 x 3.00 76 x 203 x 76 | Reinforced Wall Bracket | Black | 18 457 |
| QTPRWB20 | 9.00 x 1.00 x 20.00 229 x 25 x 508 | Reinforced Wall Bracket | Pre-galvanized | 20 508 |
| QTPRWB20BLK | 9.00 x 1.00 x 20.00 229 x 25 x 508 | Reinforced Wall Bracket | Black | 20 508 |
| QTPRWB24 | 9.00 x 1.00 x 24.00 229 x 25 x 610 | Reinforced Wall Bracket | Pre-galvanized | 24 610 |
| QTPRWB24BLK | 9.00 x 1.00 x 24.00 229 x 25 x 610 | Reinforced Wall Bracket | Black | 24 610 |

DIVIDER STRIP



For wire separation within a single QUICK TRAY PRO™ cable tray. 5-ft. (1.5-m) long strips are available in 2-, 4- and 6-in. (51-, 102- and 152-mm) heights. To secure divider strips to tray, use QTPSSW3/QTPSSW3BLK Splice Washer and QTPBNWK/QTPBNWKBLK Splice Kit for each strip.

BULLETIN: DQT

| Catalog Number | AxBxC in./mm | Description | Finish | Tray Height in./mm |
|----------------|--|---------------|----------------|--------------------|
| QTPDS2 | 2.00 x 1.00 x 60.00 51 x 25 x 1524 | Divider Strip | Pre-galvanized | 2 51 |
| QTPDS2BLK | 2.00 x 1.00 x 60.00 51 x 25 x 1524 | Divider Strip | Black | 2 51 |
| QTPDS4 | 4.00 x 1.00 x 60.00 102 x 25 x 1524 | Divider Strip | Pre-galvanized | 4 102 |
| QTPDS4BLK | 4.00 x 1.00 x 60.00 102 x 25 x 1524 | Divider Strip | Black | 4 102 |
| QTPDS6 | 6.00 x 1.00 x 60.00 152 x 25 x 1524 | Divider Strip | Pre-galvanized | 6 152 |
| QTPDS6BLK | 6.00 x 1.00 x 60.00 152 x 25 x 1524 | Divider Strip | Black | 6 152 |

SIDE-ACTION BOLT CUTTER

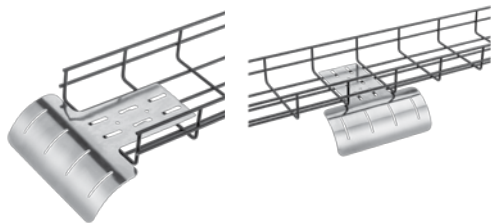


The QUICK TRAY PRO Side-Action Bolt Cutter insures a flush cut and helps create a protective coating for the new cut.

BULLETIN: DQT

| Catalog Number | AxBxC in./mm | Description |
|----------------|--------------------------------------|-------------------------|
| QTPBC | 12.00 x 1.00 x 0.50 305 x 25 x 13 | Side Action Bolt Cutter |

VERTICAL DOWN

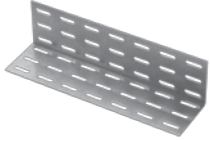


The QUICK TRAY PRO Vertical Down protects cables when exiting and entering tray. Built-in hold down method for side mount. Attached with 1/4 in. hardware for center mount.

BULLETIN: DQT

| Catalog Number | AxBxC in./mm | Description | Finish |
|----------------|---------------------------------------|---------------|----------------|
| QTPVD | 1.00 x 8.00 x 11.00 25 x 203 x 279 | Vertical Down | Pre-galvanized |
| QTPVDBLK | 1.00 x 8.00 x 11.00 25 x 203 x 279 | Vertical Down | Black |

WALL-TERMINATION BRACKET



Fastens the end of QUICK TRAY PRO™ cable tray to a wall. Attach to tray with QTPSSW3/QTPSSW3BLK Splice Washers and QTPBNWK/QTPBNWKBLK Splice Kits.

BULLETIN: DQT

| Catalog Number | AxBxC in./mm | Description | Finish |
|----------------|--------------------------------------|---|----------------|
| QTPWTB | 3.00 x 12.00 x 3.00 76 x 305 x 76 | Wall-Termination Bracket, 12 in. (305 mm) | Pre-galvanized |
| QTPWTBBLK | 3.00 x 12.00 x 3.00 76 x 305 x 76 | Wall-Termination Bracket, 12 in. (305 mm) | Black |

POLYMER INSERT



Polymer inserts provide continuous support for the cables when used as a tray liner. This flame retardant polymer material is prescored at the factory to fit in all standard width QUICK TRAY PRO cable trays.

BULLETIN: DQT

| Catalog Number | Description | Tray Width in./mm |
|----------------|---|-------------------|
| QTP4INST | 4 x 120-in. (102 x 3048-mm) Polymer Insert | 4 102 |
| QTP6INST | 6 x 120-in. (152 x 3048-mm) Polymer Insert | 6 152 |
| QTP8INST | 8 x 120-in. (203 x 3048-mm) Polymer Insert | 8 203 |
| QTP12INST | 12 x 120-in. (305 x 3048-mm) Polymer Insert | 12 305 |
| QTP16INST | 16 x 120-in. (406 x 3048-mm) Polymer Insert | 16 406 |
| QTP18INST | 18 x 120-in. (457 x 3048-mm) Polymer Insert | 18 457 |
| QTP20INST | 20 x 120-in. (508 x 3048-mm) Polymer Insert | 20 508 |
| QTP24INST | 24 x 120-in. (610 x 3048-mm) Polymer Insert | 24 610 |