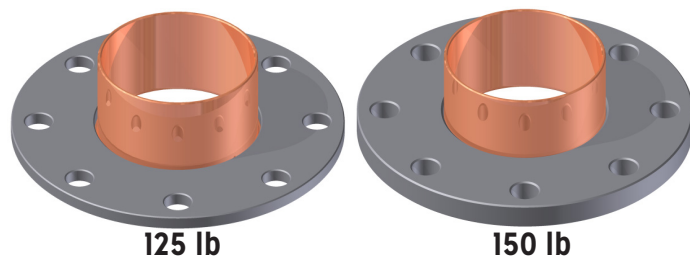


# 741 & 771 Series

Elkhart Products Wrot Copper Solder Fitting

125 lb. & 150 lb. Companion Flange with Steel Base (1/2" through 8")

## SUBMITTAL SHEET



Job Name:	
Job Location:	
Engineer:	
Contractor:	
Tag:	
PO#:	
Rep:	
Wholesale Dist.:	

### DESCRIPTION

Elkhart Products WROT Copper Solder Companion Flanges feature a black epoxy powder-coated dialectically-insulated steel flange base which includes a Lead-Free copper flanged fitting. The steel flange base contains a standard bolt pattern that accommodates ASME, MSS and ASSE requirements. The copper flanged fitting is made to ASME B16.22 material and design requirements.

### FEATURES

- Lead-Free Construction
- No special tools required
- NSF/ANSI 61 & 372 - \*Lead Free (LF) Certified 3rd Party
- Epoxy coating provides Dielectric connection.
- Use with ASTM B88 copper tube, Type K, L, M
- Dezincification-resistant

### OPTIONS & SIZES

- 1/2", 3/4", 1", 1 1/4", 1 1/2", 2", 2 1/2", 3", 4", 5", 6", 8"

### APPROVALS

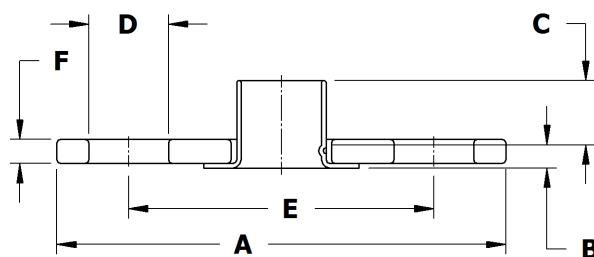
- NSF/ANSI 61 & 372 - \*Lead Free (LF) Certified 3rd Party

### STANDARD MATERIALS LIST

Part Name	Material
Body	UNS C12200 Copper
Steel Base	ASTM A36/A516 Grade 60, 65, 70
Coating	Black Powder Epoxy

### DIMENSIONS

Item No.	Description	A	B	C	D	E	F	Wt.
10035601	741 1/2" 125LB Wrot Companion Flange	3.50	0.18	0.50	4X 0.62	2.38	0.19	0.460
10035603	741 3/4" 125LB Wrot Companion Flange	3.88	0.20	0.75	4X 0.62	2.75	0.19	0.591
10035606	741 1" 125LB Wrot Companion Flange	4.25	0.21	0.91	4X 0.62	3.12	0.19	0.746
10035609	741 1-1/4" 125LB Wrot Companion Flange	4.62	0.23	0.97	4X 0.62	3.50	0.19	0.884
10035612	741 1-1/2" 125LB Wrot Companion Flange	5.00	0.24	1.09	4X 0.62	3.88	0.25	1.335
10035615	741 2" 125LB Wrot Companion Flange	6.00	0.19	1.34	4X 0.75	4.75	0.31	1.931
10035618	741 2-1/2" 125LB Wrot Companion Flange	7.00	0.47	1.47	4X 0.75	5.50	0.31	3.470
10035621	741 3" 125LB Wrot Companion Flange	7.50	0.34	1.66	4X 0.75	6.00	0.38	3.607
10035624	741 4" 125LB Wrot Companion Flange	9.00	0.41	2.16	8X 0.75	7.50	0.38	6.359
10035627	741 5" 125LB Wrot Companion Flange	10.00	0.29	2.61	8X 0.88	8.50	0.38	7.325
10035630	741 6" 125LB Wrot Companion Flange	11.00	0.43	3.09	8X 0.88	9.50	0.38	10.100
10035633	741 8" 125LB Wrot Companion Flange	13.50	0.47	3.97	8X 0.88	11.75	0.50	20.200
10035790	771 1" 150LB Wrot Companion Flange	4.25	0.21	0.91	4X 0.62	3.12	0.38	1.373
10035803	771 1-1/4" 150LB Wrot Companion Flange	4.62	0.23	0.97	4X 0.62	3.50	0.41	1.737
10035808	771 1-1/2" 150LB Wrot Companion Flange	5.00	0.24	1.09	4X 0.62	3.88	0.44	2.189
10035813	771 2" 150LB Wrot Companion Flange	6.00	0.19	1.34	4X 0.75	4.75	0.50	3.578
10035819	771 2-1/2" 150LB Wrot Companion Flange	7.00	0.47	1.47	4X 0.75	5.50	0.56	5.600
10035828	771 3" 150LB Wrot Companion Flange	7.50	0.34	1.66	4X 0.75	6.00	0.62	6.708
10035836	771 4" 150LB Wrot Companion Flange	9.00	0.41	2.16	8X 0.75	7.50	0.69	10.290
10035839	771 5" 150LB Wrot Companion Flange	10.00	0.29	2.61	8X 0.88	8.50	0.75	13.260
10035842	771 6" 150LB Wrot Companion Flange	11.00	0.43	3.09	8X 0.88	9.50	0.81	17.100
10035850	771 8" 150LB Wrot Companion Flange	13.50	0.47	3.97	8X 0.88	11.75	0.94	30.180



\* LEAD FREE: The wetted surfaces of this product shall contain no more than 0.25% lead by weighted average. Complies with Federal Public Law 111-380. ANSI 3rd party approved and listed.

Customer Service (574) 264-3181  
www.elkhartproducts.com

This specification is provided for reference only. Elkhart Products Inc. reserves the right to change any portion of this specification without notice and without incurring obligation to make such changes to EPC products previously or subsequently sold. Please visit [elkhartproducts.com](http://elkhartproducts.com) for the most current information.

