

Pushbutton cover field option kit for Magnum low voltage circuit breakers

⚠ WARNING

(1) **ONLY QUALIFIED ELECTRICAL PERSONNEL SHOULD BE PERMITTED TO WORK ON THE EQUIPMENT.**
 (2) **ALWAYS DE-ENERGIZE PRIMARY AND SECONDARY CIRCUITS IF A CIRCUIT BREAKER CANNOT BE REMOVED TO A SAFE WORK LOCATION.**
 (3) **DRAWOUT CIRCUIT BREAKERS SHOULD BE LEVERED (RACKED) OUT TO THE DISCONNECT POSITION.**
 (4) **ALL CIRCUIT BREAKERS SHOULD BE SWITCHED TO THE OFF POSITION AND MECHANISM SPRINGS DISCHARGED.**
FAILURE TO FOLLOW THESE STEPS FOR ALL PROCEDURES DESCRIBED IN THIS INSTRUCTION LEAFLET COULD RESULT IN DEATH, BODILY INJURY, OR PROPERTY DAMAGE.

Section 1: General information

Padlockable covers limit access to the ON and OFF pushbuttons. They can be installed with either or both pushbutton covers in place. All access to the ON pushbutton can be prevented by adding the blockout plate to the pushbutton cover.

Required tools

- 1/8-inch drill bit
- Tap wrench or twist drill
- Slot-head screwdriver

Kit parts identification

Refer to **Figure 1** for visual identification of the parts listed below:

- (A) Pushbutton covers (two—1L and 1R)
 (B) Pushbutton cover base (one)
 (C) Blockout plate (one)—**blockout plate only required for plastic pushbutton covers**
 (D) Mounting screws (two)

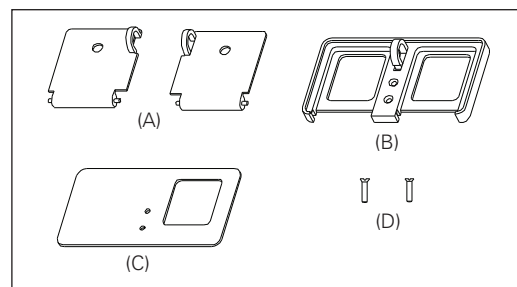


Figure 1. Contents of Kit

Section 2: Installation of pushbutton cover field option kit

To install the pushbutton cover field option kit, proceed with the following three steps:

Step 1: Hold the 1/8-inch drill bit in a tap wrench or equivalent. Carefully remove the thin plastic layer covering the threaded inserts at the two indentations located between the ON and OFF pushbuttons. **Only use a hand-twist drill and light pressure to remove the plastic flash cover to expose the threaded inserts. Never use a power drill. Care must be exercised, or the inserts could be damaged or dislodged.**

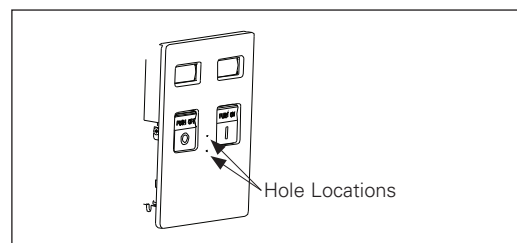


Figure 2. Step 1

EAT•N

Powering Business Worldwide

Step 2: Install the two supplied doors (A) in the base (B) before assembling to the pushbutton panel.

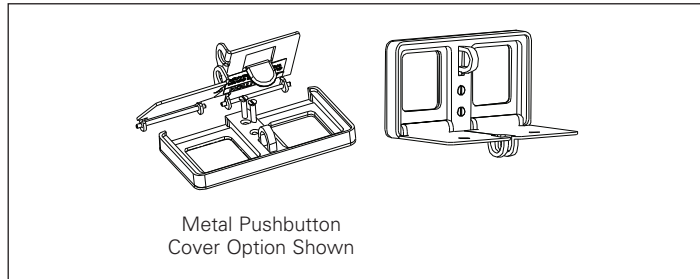


Figure 3. Step 2

Step 3: Mount the assembly using two flat-head screws (D) (M3 x 12) provided. If the blockout plate (C) is used, locate it between the pushbutton panel and the cover as shown.

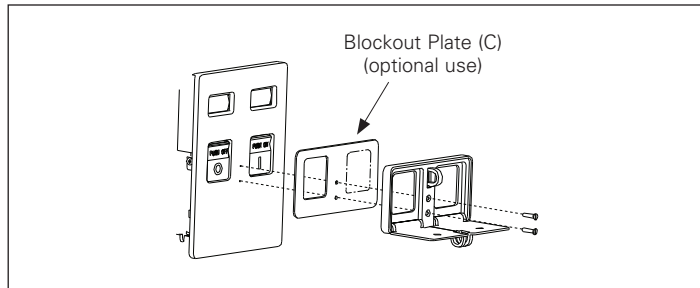


Figure 4. Step 3

Disclaimer of warranties and limitation of liability

The information, recommendations, descriptions, and safety notations in this document are based on Eaton Corporation's ("Eaton") experience and judgment, and may not cover all contingencies. If further information is required, an Eaton sales office should be consulted.

Sale of the product shown in this literature is subject to the terms and conditions outlined in appropriate Eaton selling policies or other contractual agreement between Eaton and the purchaser.

THERE ARE NO UNDERSTANDINGS, AGREEMENTS, WARRANTIES, EXPRESSED OR IMPLIED, INCLUDING WARRANTIES OF FITNESS FOR A PARTICULAR PURPOSE OR MERCHANTABILITY, OTHER THAN THOSE SPECIFICALLY SET OUT IN ANY EXISTING CONTRACT BETWEEN THE PARTIES. ANY SUCH CONTRACT STATES THE ENTIRE OBLIGATION OF EATON. THE CONTENTS OF THIS DOCUMENT SHALL NOT BECOME PART OF OR MODIFY ANY CONTRACT BETWEEN THE PARTIES.

In no event will Eaton be responsible to the purchaser or user in contract, in tort (including negligence), strict liability, or otherwise for any special, indirect, incidental, or consequential damage or loss whatsoever, including but not limited to damage or loss of use of equipment, plant or power system, cost of capital, loss of power, additional expenses in the use of existing power facilities, or claims against the purchaser or user by its customers resulting from the use of the information, recommendations, and descriptions contained herein.

The information contained in this manual is subject to change without notice.

Eaton Corporation
Electrical Sector
1000 Cherrington Parkway
Moon Township, PA 15108
United States
877-ETN-CARE (877-386-2273)
Eaton.com

© 2009 Eaton Corporation
All Rights Reserved
Printed in USA
Publication No. IL2C12895H06 / Z8682
June 2009