

# EIH instrument enclosures

Cl. I, Div. 1 & 2, Groups B<sup>A</sup>, C, D  
Cl. II, Div. 1, Groups E, F, G  
Cl. II, Div. 2, Groups F, G  
Cl. III  
NEMA 3, 4, 4X, 7B<sup>A</sup>CD, 9EFG  
Ex d IIB, IP66 ATEX certified

Explosionproof  
Dust-ignitionproof  
Raintight  
Wet locations  
Watertight

1E

## Applications:

EIH instrument enclosures are used:

- To enclose instrumentation and control devices, such as two-wire transmitters, flow measurement devices, temperature controls, level detectors, pressure switches, etc.
- As an outlet box for pulling and splicing conductors
- In hazardous, abusive and wet locations
- To provide access to conductors for maintenance and future system changes

## Features:

- 3/4" offset through feed hubs offer maximum interior space and greater working area
- 2" and 4" deep covers, solid or with glass lens
- Internal mounting pads for instrument mounting
- Internal ground screw for safe, continuous grounding
- Neoprene gasket provides a watertight seal for NEMA/EEMAC 4 and UL/CSA Type 4 applications
- Wrenching lugs permit easy cover removal and tightening
- Internal cover threads provide additional space inside body
- External boss is suitable for drilling and tapping an additional conduit entry

## Certifications and compliances:

### NEC/CEC:

- Class I, Divisions 1 & 2, Groups B<sup>A</sup>, C, D
- Class II, Division 1, Groups E, F, G
- Class II, Division 2, Groups F, G
- Class III

### UL standard:

- UL1203

### CSA standard:

- C22.2 No. 30

### IEC/ATEX standards:

- EN:60079-0, EN:60079-1, EN:60529
- ATEX certificate: KEMA 02 ATEX 2265U (with ATEX suffix)

### FM classification:

- No. 3615

### Environmental ratings:

- NEMA/EEMAC 3, 4, 4X, 7B<sup>A</sup>CD, 9EFG

## Standard materials:

- Body and cover – copper-free aluminum
- Glass lens – heat tempered glass
- Gasket – neoprene

## Standard finish:

- Corro-free epoxy powder coat (gray)



EIH22



EIH20

## Options:

### Description

- Cast mounting feet..... **Suffix** MF
- ATEX certification ..... **ATEX**
- Natural finish..... **Contact factory**

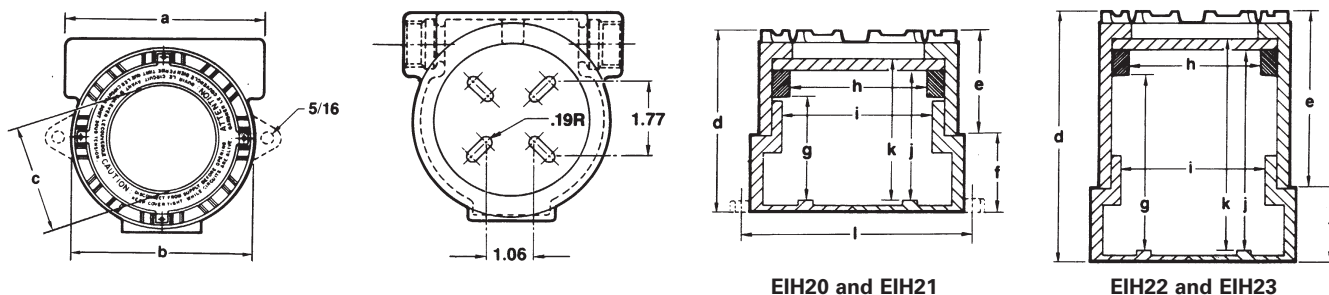
### Additional drilled and tapped opening in external boss:

- 1/2" ..... **1**
- 3/4" ..... **2**

## Ordering information:

Hub size <sup>B</sup>	Description	Cat. #
3/4"	Body with 2" standard cover	EIH20
3/4"	Body with 2" glass lens cover	EIH21
3/4"	Body with 4" dome cover	EIH22
3/4"	Body with 4" glass lens dome cover	EIH23

## Dimension<sup>©</sup> (in inches):



Cat. #	a	b	c	d	e	f	g	h	i	j	k	l
EIH20	5.00	4.25	—	4.54	2.60	1.94	—	—	3.62	—	3.34	5.25
EIH21	5.00	4.25	2.60	4.54	2.60	1.94	2.75	2.61	3.62	3.10	—	5.25
EIH22	5.00	4.25	—	6.54	4.60	1.94	—	—	3.62	—	5.34	5.25
EIH23	5.00	4.25	2.60	6.54	4.60	1.94	4.68	2.61	3.62	5.03	—	5.25

<sup>A</sup>For Group B applications, seal within 1/4" of enclosure in accordance with Section 501-5 of the National Electrical Code as well as any other applicable codes.

<sup>B</sup>For 1/2" hub size, use RE21-SA.

<sup>C</sup>Dimensions are approximate, not for construction purposes.

## Applications:

EIHT instrument enclosures are used:

- To enclose instrumentation and control devices, such as two-wire transmitters, flow measurement devices, temperature controls, level detectors, pressure switches, etc.
- As an outlet box for pulling and splicing conductors
- In hazardous, abusive and wet locations
- To provide access to conductors for maintenance and future system changes

## Features:

- $\frac{3}{4}$ " offset through feed hubs offer maximum interior space and greater working area
- 2" and 4" deep covers, solid or with glass lens
- Internal mounting pads for instrument mounting
- Internal ground screw for safe, continuous grounding
- Neoprene gasket provides a watertight seal for NEMA/EEMAC 4 and UL/CSA Type 4 applications
- Wrenching lugs permit easy cover removal and tightening
- Internal cover threads provide additional space inside body
- External boss is suitable for drilling and tapping an additional conduit entry
- Two separate chambers for isolation of power supply and instrument
- $\frac{3}{4}$ " hub on instrument side
- Third party certified for drilling enclosure wall between instrument and power side

## Certifications and compliances:

### NEC/CEC:

- Class I, Divisions 1 & 2, Groups B<sup>A</sup>, C, D
- Class II, Division 1, Groups E, F, G
- Class II, Division 2, Groups F, G
- Class III

### UL standard:

- UL1203

### CSA standard:

- C22.2 No. 30

### IEC standards:

- EN:60079-0, EN:60079-1, EN:60529

### FM classification:

- No. 3615

### Environmental ratings:

- NEMA/EEMAC 3, 4, 7B<sup>A</sup>CD, 9EFG

## Standard materials:

- Body and cover – copper-free aluminum
- Glass lens – heat tempered glass
- Gasket – neoprene

## Standard finish:

- Corro-free epoxy powder coat (gray)

## Options:

### Description

### Suffix

- Natural finish..... **Contact factory**

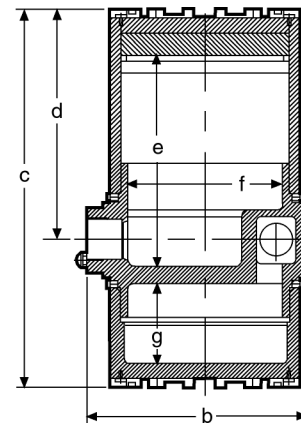
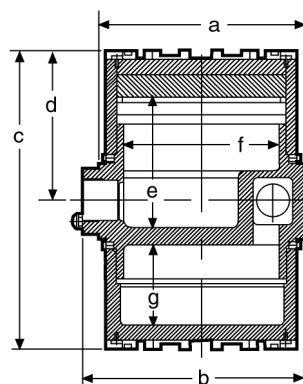
### Additional drilled and tapped opening in external boss:

- $\frac{1}{2}$ " ..... 1
- $\frac{3}{4}$ " ..... 2

## Ordering information:

Hub size <sup>B</sup>	Description	Cat. #
$\frac{3}{4}$ "	2" blank cover - power side; 2" blank cover - instrument side	EIHT200
$\frac{3}{4}$ "	2" blank cover - power side; 2" glass lens cover - instrument side	EIHT210
$\frac{3}{4}$ "	2" blank cover - power side; 4" blank cover - instrument side	EIHT220
$\frac{3}{4}$ "	2" blank cover - power side; 4" glass lens cover - instrument side	EIHT230

## Dimensions (in inches):



Cat. #	a	b	c	d	e	f	g
EIHT200	4.75	5.19	6.95	3.48	3.15	3.56	1.87
EIHT210	4.75	5.19	6.95	3.48	3.15	3.56	1.87
EIHT220	—	5.19	8.95	5.48	5.15	3.56	1.87
EIHT230	—	5.19	8.95	5.48	5.15	3.56	1.87

<sup>A</sup> For Group B applications, seal within  $\frac{1}{16}$ " of enclosure in accordance with Section 501-5 of the National Electrical Code as well as any other applicable codes.

<sup>B</sup> For  $\frac{1}{2}$ " hub size, use RE21-SA.