

Applications:

LBD mogul bodies are installed at 90° bends in rigid conduit to:

- Act as pull outlets for conductors that are stiff due to large size or type of insulation
- Make 90° bends in conduit system, allowing straight pull in either direction
- Provide for conduit service entrance to buildings
- Provide for conductor entrance to motors
- Provide access to wiring for maintenance and future expansion

Features:

LBD bodies have:

- Cover openings on an angle permitting conductors to be pulled straight through hubs from either direction
- Domed covers to permit easy conductor bends (relieves strain on insulation)
- Cover and gasket furnished
- Taper tapped hubs with integral bushings

Certifications and compliances:

- UL standard: UL514B
- Fed. Spec.: W-C-586d
- CSA standard: 22.2 No. 18

Standard materials:

- Body and cover – Feraloy iron alloy
- Gasket – neoprene

Standard finishes:

- Feraloy iron alloy – 1/2" to 4" sizes: electrogalvanized and aluminum acrylic paint; 5" and 6" sizes: zinc chromate primer and aluminum lacquer
- Neoprene – natural

Options:

- Description** **Suffix**
- Material – copper-free aluminum **SA**
Available in select sizes

Options for mogul (available on sizes 2 1/2" to 6" only):

- Body factory drilled and tapped with 1/2" NPT female thread to accept CD1 drain **WD**

Ordering information:



Hub size	Cat. #	Hub size	Cat. #	Hub size	Cat. #
1/2"	LBD1100	1 1/4"	LBD4400 ^A	3 1/2"	LBD9900
3/4"	LBD2200	1 1/2"	LBD5500	4"	LBD10900
1"	LBD3300	2"	LBD6600	5"	LBD012
		2 1/2"	LBD7700	6"	LBD014
		3"	LBD8800		

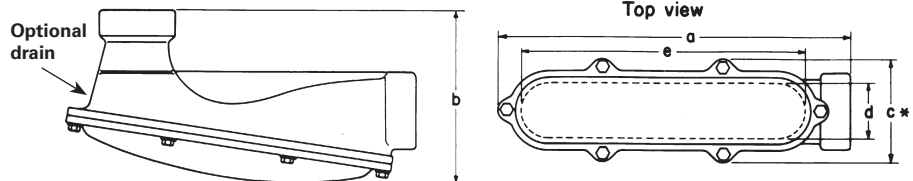
Replacement rubber gaskets for above sizes

Hub size	Cat. #	Hub size	Cat. #	Hub size	Cat. #
1/2"	GASK680R	1 1/4"	GASK683R	3 1/2"	GASK989R
3/4"	GASK681R	1 1/2"	GASK684R	4"	GASK989R
1"	GASK682R	2"	GASK684R	5"	GASK687R
		2 1/2"	GASK990R	6"	GASK688R
		3"	GASK990R		

Replacement cover assembly with hardware

Hub size	Cat. #	Hub size	Cat. #	Hub size	Cat. #
1/2"	LBD100	1 1/4"	LBD400	3"	LBD800
3/4"	LBD200	1 1/2"	LBD600	3 1/2"	LBD900
1"	LBD300	2"	LBD600	4"	LBD900
		2 1/2"	LBD800	5"	LBD120
				6"	LBD140

Dimensions (in inches):



* For 1/2-3/4-1 sizes only
"c" dimension is outside width (no bosses)

Cat. #	Hub size	a	b	c	d	e
LBD1100	1/2"	5	2 5/16	1 5/16	1	3 11/32
LBD2200	3/4"	6 1/4	2 5/8	1 9/16	1 1/4	4 17/32
LBD3300	1"	6 3/4	2 15/16	1 13/16	1 3/8	4 11/32
LBD4400	1 1/4"	8 5/8	4 1/4	3 1/2	1 13/16	7 7/16
LBD5500	1 1/2"	12 1/16	5 7/16	4 5/8	2 5/8	10 7/8
LBD6600	2"	12 1/16	5 7/16	4 5/8	2 7/8	10 7/8
LBD7700	2 1/2"	19 11/16	9 7/16	5 5/8	3	15 5/4
LBD8800	3"	19 11/16	9 7/16	5 5/8	3	15 5/4
LBD9900 (iron)	3 1/2"	20 7/8	10 7/8	7 3/4	4 3/4	19 7/8
LBD10900 (iron)	4"	20 7/8	10 7/8	7 3/4	4 3/4	19 7/8
LBD9900 (-SA)	3 1/2"	27 13/16	11 7/8	7 7/8	4	24
LBD10900 (-SA)	4"	27 13/16	11 7/8	7 7/8	4	24
LBD012	5"	32 1/16	12 1/2	8 5/8	5 7/8	30
LBD014	6"	41 1/2	15	9 3/4	7	39

^ANot available in aluminum.

Applications:

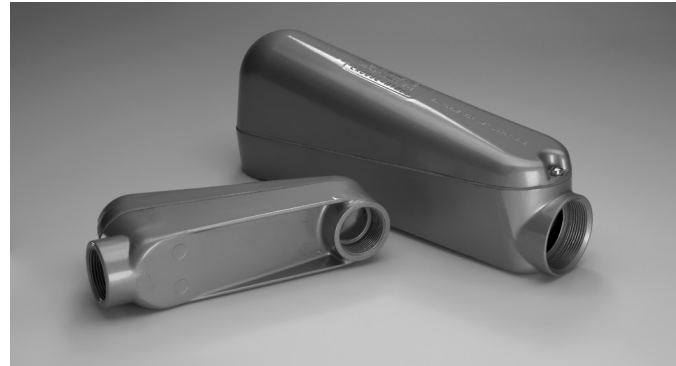
- Used as a chamber for containing heavy duty conductors
- For use as a chamber for containing a 90° turn in large stiff conductors to change conductor direction or to enter buildings
- For use as a pull box for pulling large conductors
- For use as a chamber for making splices and taps
- Can be used as an accessible opening to accommodate future changes of the system

Features:

- Large dome cover permits easy, straight through pull
- Dimension from center line of back hub to bushing of end hub exceeds six times the trade diameter of the conduit
- Tapered threads provide easy assembly, tight construction
- Heavy duty machine screws for cover
- Cover gasket provides long, dependable service and protection against the elements, such as fuel, oil and water
- Smooth design and finish make handling easy and complement any construction job

Certifications and compliances:

- UL standard: UL514A
- UL File No. E-15022
- NEC Article 314
- CSA standard: C22.2 No. 18
- CEC: 22.1



Standard materials:

- Body and cover – die cast copper-free aluminum
- Gasket – Bitaflex-87 elastomeric

Standard finish:

- Corrosion-resistant metallic paint

Ordering information:

Cat. #	Size	Dimensions				Max. wire size	Max. no. of conductors	Unit qty.	Wt. lbs. per 100
		A	B	C	D				
LBNEC3	1"	9 ²¹ / ₃₂ "	3 ¹¹ / ₃₂ "	2 ¹ / ₂ "	7 ¹ / ₂ "	2 AWG	4 #3	2	146
LBNEC4	1 ¹ / ₄ "	9 ²¹ / ₃₂ "	3 ¹¹ / ₃₂ "	2 ¹ / ₂ "	7 ¹ / ₂ "	2 AWG	3 #2	2	132
LBNEC5	1 ¹ / ₂ "	14 ¹⁷ / ₃₂ "	5 ¹³ / ₃₂ "	3 ¹ / ₈ "	12 ¹ / ₂₀ "	250 kcmil	3 #1/0	1	258
LBNEC6	2"	14 ¹⁷ / ₃₂ "	5 ¹³ / ₃₂ "	3 ¹ / ₈ "	12 ¹ / ₂₀ "	250 kcmil	3 #4/0	1	230
LBNEC7	2 ¹ / ₂ "	22"	7 ¹¹ / ₃₂ "	4 ¹ / ₂ "	18 ⁵ / ₃₂ "	500 kcmil	300 kcmil	1	1003
LBNEC8	3"	22"	7 ¹¹ / ₃₂ "	4 ¹ / ₂ "	18 ⁵ / ₃₂ "	500 kcmil	500 kcmil	1	938
LBNEC9	3 ¹ / ₂ "	28 ²⁷ / ₃₂ "	8 ¹⁵ / ₁₆ "	5 ¹ / ₂ "	24 ¹ / ₈ "	900 kcmil	500 kcmil	1	2158
LBNEC10	4"	28 ²⁷ / ₃₂ "	8 ¹⁵ / ₁₆ "	5 ¹ / ₂ "	24 ¹ / ₈ "	900 kcmil	500 kcmil	1	2060

Dimensions (in inches):

