

Arktite EBBR interlocked receptacles with circuit breakers

Cl. I, Div. 1 & 2, Groups B, C, D
Cl. II, Div. 1 & 2, Groups F^A, G
Cl. III
NEMA 3, 3R, 7BCD, 9FG, 12

Explosionproof
Dust-ignitionproof
Raintight
Wet Locations

4P

Applications:

Arktite® EBBR interlocked receptacles with circuit breakers are used:

- As a service outlet for portable equipment – indoors or outdoors – in damp, wet, corrosive locations, without the need for a protective shelter
- In areas which are hazardous due to flammable vapors, gases or combustible dust (i.e. refineries, chemical plants and other processing and handling facilities of a hazardous nature)
- In areas where frequent wash downs are necessary or where heavy rain or water spray is prevalent

Features:

- Rugged, corrosion-resistant, cast copper-free aluminum construction
- Accepts compatible Arktite plug of same rating and configuration
- Mechanical interlock mechanism for dead front construction
- Receptacles are mechanically interlocked with circuit breakers to provide disconnect means, short circuit protection and thermal time delay overload protection
- A spring door receptacle, located at the bottom of the unit, is mechanically interlocked with the circuit breaker operating mechanism for safe and dependable operation
- Plug and receptacle contacts cannot be made or broken under load; the circuit breaker cannot be closed until the plug is fully inserted and the plug cannot be withdrawn unless the breaker is de-energized
- Operating handles can be padlocked in either “ON” or “OFF” positions; breakers are trip-free of the handles and will open under short circuit or overload even if the handle is locked in the “ON” position
- Component operating handles located through the right side wall of the body permits visual confirmation of correct component assembly and operation
- Semi-clamshell enclosure design, with an external machined flat joint flame path between body and cover, makes interior components easily accessible
- Minimum enclosure-to-enclosure spacing with little interference between the opened cover and an adjacent enclosure
- Copper-free aluminum hinges allow the cover to swing well out of the way
- Stainless steel, quick release, captive, hex head cover bolts; stainless steel springs provide clear indication cover bolts are fully retracted from body
- Versatile, internal operating mechanisms allow for field adjustment to accommodate popular manufacturers’ breakers

Features (continued):

- Simple, straightforward installation of breaker on pre-drilled mounting plate within enclosure
- Neoprene cover gasket permanently attached to the cover seals out moisture
- Bodies have top drilled and tapped entrance for power conduit (1½”) plus one at the top and one at the bottom for a breather and drain (½”); breather and drain entrances are plugged
- Tap-on mounting feet

Certifications and compliances:

NEC:

- Class I, Divisions 1 & 2, Groups B, C, D
- Class II, Divisions 1 & 2, Groups F^A, G
- Class III

NEMA:

- NEMA 3, 3R, 7BCD, 9FG, 12

UL standard:

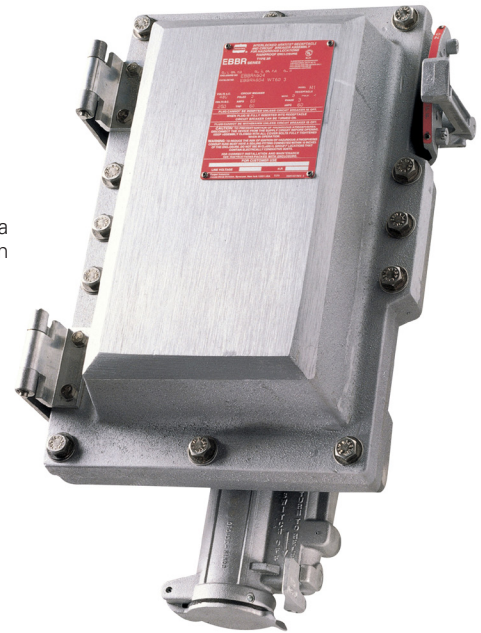
- UL1203

Standard materials:

- Body, cover and receptacle – copper-free aluminum
- Contact insulator (receptacles and plugs) – fiberglass-reinforced polyester
- Receptacle contacts – leaded red brass
- Pressure contacts (plugs) – brass
- Operating handle – copper-free aluminum
- Operating shafts and bushings – stainless steel
- Interior parts – heavy gauge sheet steel, zinc plated
- Cover bolts, washer and retractile springs – stainless steel

Standard finishes:

- Copper-free aluminum – natural
- Fiberglass-reinforced polyester – natural (red)
- Brass – natural
- Leaded red brass – electro-tin-plated
- Stainless steel – natural



Options:

Description	Suffix
• Special polarity.....	S4
<i>Receptacle interior rotated 22½° to right (viewed from face) and plug changed to match</i>	
• Group B breather and drain	S756V
• External powder epoxy finish	S752
• Auxiliary switch on circuit breaker, 1A and 1B contacts	S784
• Auxiliary switch on circuit breaker, 2A and 2B contacts	S785

Electrical ratings:

- Circuit breakers – 20 to 150 amperes
- Receptacles – 30, 60, 100, 150 amperes
- 3-wire, 4-pole configuration

Grounding:

- EBBR interlocked receptacles and matching plugs are provided with an extra grounding pole for attaching a grounding wire. In addition, direct connection is provided between receptacle and metallic plug and the grounding pole. If a compatible non-metallic plug made of Krydon fiberglass-reinforced polyester is used, grounding is accomplished through the extra grounding pole only. If a separate grounding wire is not installed in the enclosure, grounding is accomplished through the conduit system.

CAUTION: To reduce the risk of ignition of hazardous atmospheres, do not use plugs or receptacles in Class II, Group F locations that contain electrically conductive dusts.

Arktite EBBR interlocked receptacles with circuit breakers

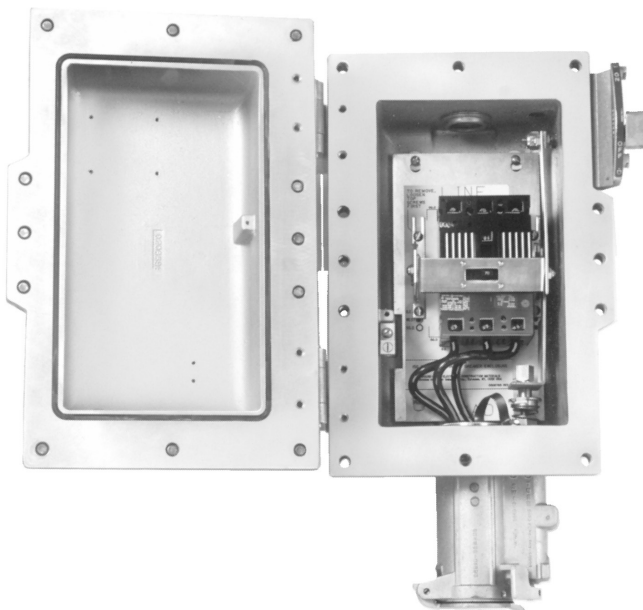
Cl. I, Div. 1 & 2, Groups B, C, D
Cl. II, Div. 1 & 2, Groups F, G
Cl. III
NEMA 3, 3R, 7BCD, 9FG, 12

Explosionproof
Dust-ignitionproof
Raintight
Wet Locations

4P

Interchangeability of plugs with other hazardous and non-hazardous location receptacles:

- Plugs listed for use with EBBR receptacles are standard Arktite APJ/NPJ plugs; standard APJ/NPJ and also CPH plugs of the same rating, style and number of poles may be used with EBBR receptacles, as well as with DBR, EPC and EPCB receptacles listed in Section 4P
- As a result, portable equipment suitable for the location and equipped with the proper plug can be used with AR/NR receptacles for non-hazardous locations; EBBR, EPC and EPCB receptacles for Class I and II hazardous locations; and DR and DBR receptacles for Class II hazardous locations



Complete EBBR receptacle with circuit breaker installed

Ordering information:

Receptacle with spring door housing	Hub size	Circuit breaker		Cat. # Without circuit breaker	Cat. # With Cutler-Hammer breaker	Cat. # With GE breaker
		Rating	Amperage			
30A 3-wire, 4-pole Style 2	1½"	3-pole, 480 VAC ^D or 250 VDC	20	EBBRA304	EBBRA304 WT20 3	EBBRA304 TT20 3
			30	EBBRA304	EBBRA304 WT30 3	EBBRA304 TT30 3
			40	EBBRA304	EBBRA304 WT40 3 ^E	EBBRA304 TT40 3 ^E
			50	EBBRA304	EBBRA304 WT50 3 ^E	EBBRA304 TT50 3 ^E
60A 3-wire, 4-pole Style 2	1½"	3-pole 480 VAC ^D or 250 VDC	50	EBBRA604	EBBRA604 WT50 3	EBBRA604 TT50 3
			60	EBBRA604	EBBRA604 WT60 3	EBBRA604 TT60 3
			70	EBBRA604	EBBRA604 WT70 3 ^E	EBBRA604 TT70 3 ^E
			90	EBBRB604	EBBRB604 WT90 3 ^E	EBBRB604 TT90 3 ^E
			100	EBBRB604	EBBRB604 WT100 3 ^E	EBBRB604 TT100 3 ^E
			50	EBBRA104	EBBRA104 WT50 3	EBBRA104 TT50 3
100A 3-wire, 4-pole Style 2	1½"	3-pole 480 VAC ^D or 250 VDC	60	EBBRA104	EBBRA104 WT60 3	EBBRA104 TT60 3
			70	EBBRA104	EBBRA104 WT70 3	EBBRA104 TT70 3
			90	EBBRB104	EBBRB104 WT90 3	EBBRB104 TT90 3
			100	EBBRB104	EBBRB104 WT100 3	EBBRB104 TT100 3
			100	EBBRB154	EBBRB154 WT100 3	
150A ^C 3-wire, 4-pole Style 2	1½"	3-pole 480 VAC ^D or 250 VDC	100	EBBRB154	EBBRB154 WT100 3	
			125	EBBRB154	EBBRB154 WT125FDB 3	
			150	EBBRB154	EBBRB154 WT150FDB 3	

CAUTION: To reduce the risk of ignition of hazardous atmospheres, do not use plugs or receptacles in Class II, Group F locations that contain electrically conductive dusts.

^C150A also available in A size enclosure for areas with space constraints (i.e. EBBRA154).

^DEnclosures with 600V circuit breakers are available. Add suffix 'FDB' to catalog number. For example: EBBRA304 – WT20FDB-3.

^ECircuit breaker trip rating may exceed receptacle rating for welding equipment applications only, as higher trip rating may not protect wiring.

Arktite EBBR interlocked receptacles with circuit breakers

Cl. I, Div. 1 & 2, Groups B, C, D
Cl. II, Div. 1 & 2, Groups F, G
Cl. III
NEMA 3, 3R, 7BCD, 9FG, 12

Explosionproof
Dust-ignitionproof
Raintight
Wet Locations

4P

Ordering information (continued):

Arktite APJ/NPJ plugs

Amperage	Cable O.D. range	Cat. # 3-wire, 4-pole aluminum	Cat. # 3-wire, 4-pole Krydon
30	0.60 - 1.20"	APJ3485	NPJ3483
	0.55 - 0.70"		NPJ3484
	0.70 - 0.85"		
60	0.75 - 1.45"	APJ6485	NPJ6484
	0.75 - 1.07"		NPJ6485
	1.07 - 1.35"		
100	1.00 - 1.70"	APJ10487	NPJ10486
	0.93 - 1.21"		NPJ10487
	1.21 - 1.50"		
150	0.875 - 1.70"	APJ15487	



Aluminum APJ

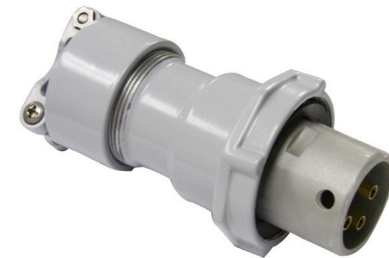


Krydon non-metallic NPJ
(30-100A only)

APJ, CCP and NPJ plugs may be used with EBBR interlocked receptacles

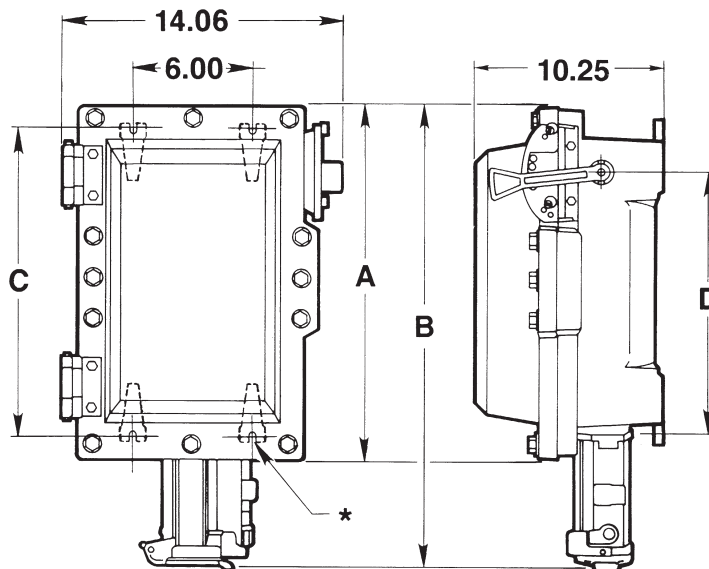
PowerMate™ CPP plugs

Amperage	Cable O.D. range	Cat. # 3-wire, 4-pole aluminum
30	0.340 - 1.375"	CCP3034 BC
60	0.440 - 1.375"	CCP6034BC
100	0.875 - 1.906"	CCP1034BC
150	0.875 - 1.906"	CCP15034CD
	1.250 - 2.190"	CCP15034DE



CCP15034CD
CCP15034DE

Dimensions (in inches):



* USE 1/2" DIAMETER BOLTS

EBBRA

Amperage	A	B	C	D
30	19.40	22.85	17.25	14.50
60	19.40	23.95	17.25	14.50
100	19.40	24.70	17.25	14.50
150	19.40	24.70	17.25	14.50

EBBRB

Amperage	A	B	C	D
60	26.90	31.45	24.75	22.00
100	26.90	32.20	24.75	22.00
150	26.90	32.20	24.75	22.00

CAUTION: To reduce the risk of ignition of hazardous atmospheres, do not use plugs or receptacles in Class II, Group F locations that contain electrically conductive dusts.