

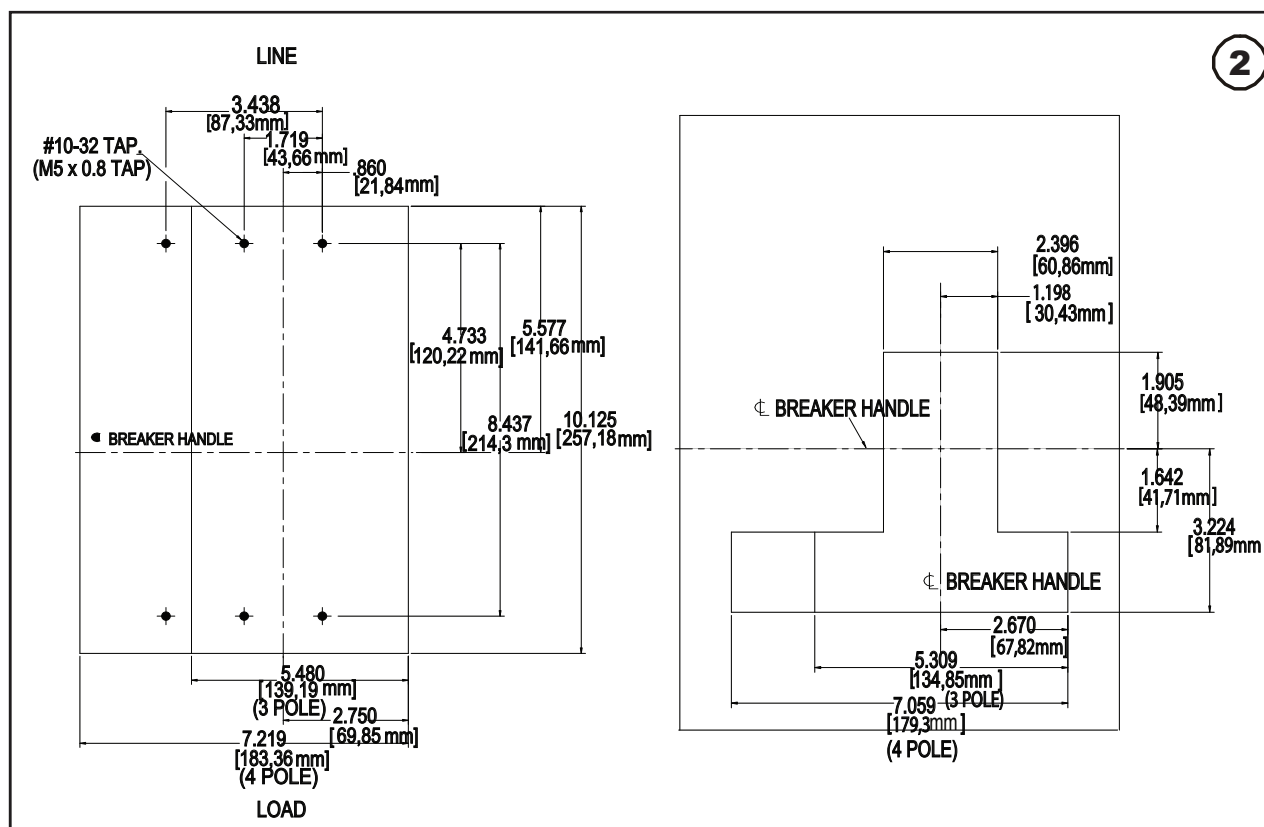
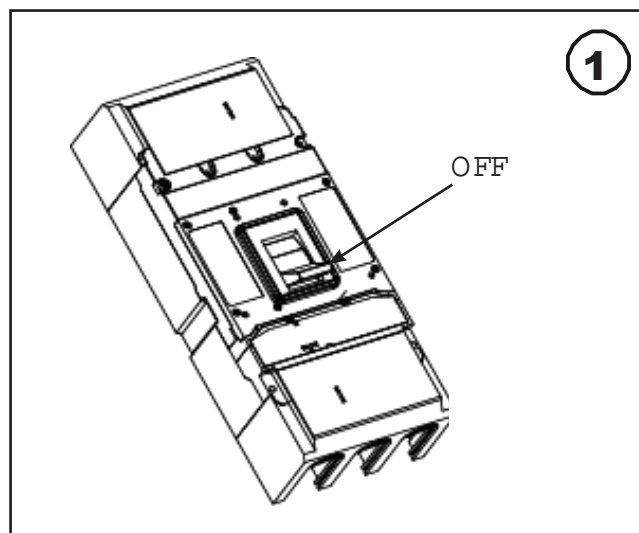
Installation Instructions for LG-DC Frame Circuit Breakers and Molded Case Switches



WARNING



DO NOT ATTEMPT TO INSTALL OR PERFORM MAINTENANCE ON EQUIPMENT WHILE IT IS ENERGIZED. DEATH OR SEVERE PERSONAL INJURY CAN RESULT FROM CONTACT WITH ENERGIZED EQUIPMENT. ALWAYS VERIFY THAT NO VOLTAGE IS PRESENT BEFORE PROCEEDING.



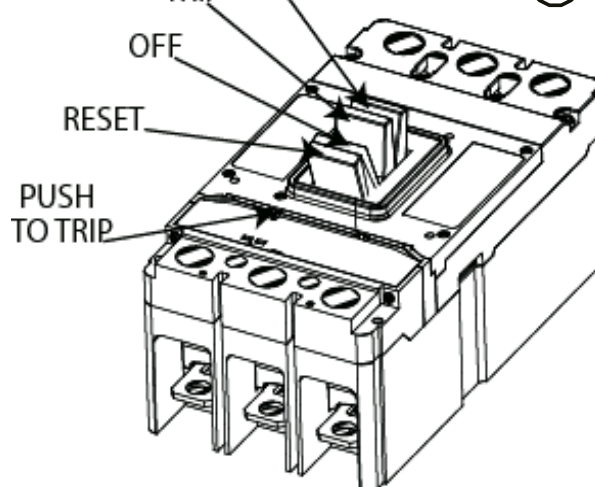
EATON

Powering Business Worldwide

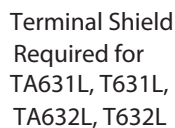
3



Operation ON  **5**



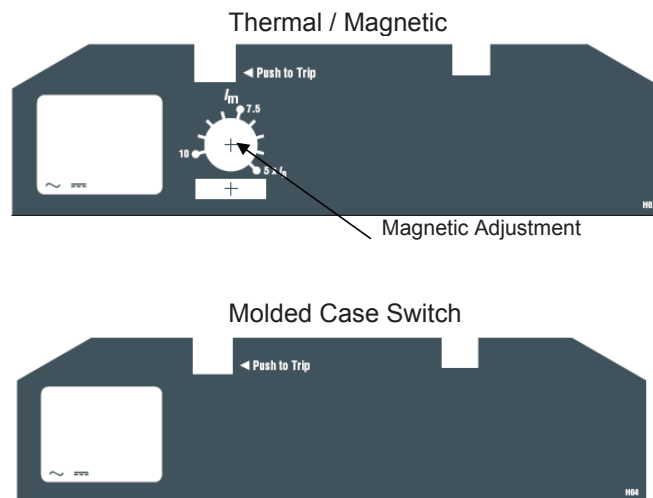
4



Catalog Number	Wire Size Range		Torque		Wire Type	Terminal Body Material
	AWG	mm ²	In-lb	Nm		
TA631L	500-750(1)	240-380(1)	550	62	Cu/Al	Aluminum
T631L	500-750(1)	240-380(1)	500	57	Cu	Copper
TA632L*	2-500(2)	35-240(2)	375	42	Cu/Al	Aluminum
T632L	2-500(2)	35-240(2)	375	42	Cu	Copper
TA350L	3-500(1)	35-240(1)	375	42	Cu/Al	Aluminum
T350L	3-500(1)	35-240(1)	375	42	Cu	Copper

*Standard collars mounted on line and load end

6



Connection Diagram**7**

Suitable for use on ungrounded systems as well as grounded systems that have one end of load (figure 1-2A) connected to power supply.

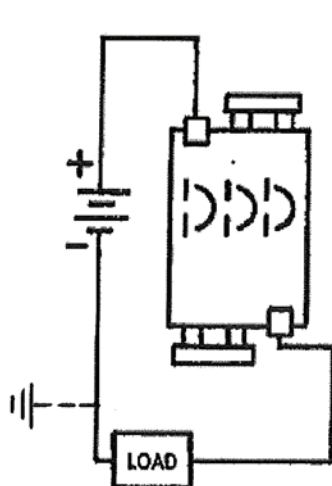
3-Pole In Series

Fig. 1-2A

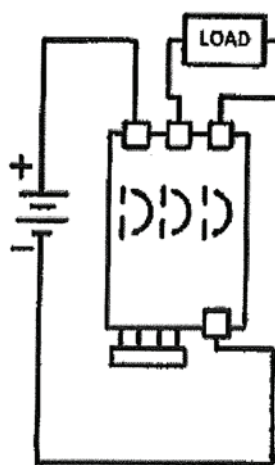


Fig. 1-2B

Use Rated Cable per N.E.C. and connect to
Terminals as per Breaker Nameplate.

