

EYS and EZS conduit sealing fittings

Cl. I, Div. 1 & 2, Groups A, B, C, D
Cl. II, Div. 1, Groups E, F, G
Cl. II, Div. 2, Groups F, G
Cl. III

Explosionproof
Dust-ignitionproof

See pages 124-125 for
Chico sealing compound and fiber

Applications:

EYS and EZS sealing fittings:

- Restrict the passage of gases, vapors or flames from one portion of the electrical installation to another at atmospheric pressure and normal ambient temperatures
 - Limit explosions to the sealed off enclosure
 - Limit pre-compression or "pressure piling" in conduit systems
- Sealing fittings are required:
- At each entrance to an enclosure housing an arcing or sparking device when used in Class I, Divisions 1 and 2 hazardous locations; to be located as close as practicable and, in no case, more than 18" from such enclosures
 - At each conduit entrance of 2" size or larger to an enclosure or fitting housing terminals, splices or taps when used in Class I, Division 1 hazardous locations; to be located as close as practicable and, in no case, more than 18" from such enclosures
 - In conduit systems when leaving Class I, Division 1 or Division 2 hazardous locations
 - In cable systems when the cables either do not have a gas/vaportight continuous sheath or are capable of transmitting gases or vapors through the cable core when those cables leave the Class I, Division 1 or Division 2 hazardous locations

Features:

EYS and EZS sealing fittings include:

- Minimum turning radius
- Large openings with threaded closures to provide easy access to conduit hubs for making dams
- Integral bushings in conduit hubs to protect conductor insulation from damage
- Taper tapped hubs to ensure ground continuity

EYS sealing fittings are available for installation in either vertical only or in both horizontal or vertical positions.

EZS sealing fittings for installation at any angle; the covers with opening for sealing compound can be properly positioned to accept the compound.

Certifications and compliances:

NEC/CEC:

EYS1-EYS3, EYS11-EYS31, EYS16-EYS36, EYS116-EYS316

- Class I, Divisions 1 & 2, Groups A, B, C, D
- Class II, Division 1, Groups E, F, G
- Class II, Division 2, Groups F, G
- Class III

EYS41-EYS101, EYS416-EYS1016

- Class I, Divisions 1 & 2, Groups B, C, D
- Class II, Division 1, Groups E, F, G
- Class II, Division 2, Groups F, G
- Class III

EYS29, EYS4-EYS014, EYS46-EYS0146, EZS1-EZS8, EZS16-EZS86

- Class I, Divisions 1 & 2, Groups C, D
- Class II, Divisions 1 & 2, Groups F, G
- Class III

UL standard:

- UL1203

CSA standard:

- C22.2

Standard materials:

- Bodies – Feraloy iron alloy and/or ductile iron
- Plugs – Feraloy iron alloy and/or steel
- Removable nipples – steel

Standard finishes:

- Feraloy iron alloy and ductile iron – electrogalvanized and aluminum acrylic paint
- Steel – electrogalvanized

Options:

Description

- Copper-free aluminum bodies, nipples and enclosuresSA

Suffix

Size ranges:

- 1/2" - 6"

Ordering information:

EYS



Vertical
female



Vertical
male and female

For sealing in vertical positions only

Hub size	Cat. # Female hub	Cat. # Male and female hub	Approximate internal volume in cubic inches
1/2"	EYS1 ^A	EYS16 ^A	1
3/4"	EYS2 ^A	EYS26 ^A	2
1"	EYS3 ^A	EYS36 ^A	3 3/4

Sealing fittings are approved for use in hazardous locations only when Chico X fiber and Chico A sealing compound or Chico SpeedSeal are used to make the seal.

^A Available in copper-free aluminum. To order, add suffix 'SA' to end of catalog number.

EYS and EZS conduit sealing fittings

See pages 124-125 for
Chico sealing compound and fiber

Cl. I, Div. 1 & 2, Groups A, B, C, D
Cl. II, Div. 1, Groups E, F, G
Cl. II, Div. 2, Groups F, G
Cl. III

Explosionproof
Dust-ignitionproof

5F
5F

Ordering information (continued):

EYS



Vertical or
horizontal
female



Vertical or
horizontal
male and female

For sealing in vertical or horizontal positions

Hub size	Cat. # Female hub	Cat. # Male and female hub	Approximate internal volume in cubic inches	
			Vertical	Horizontal
1/2"	EYS11 ^B	EYS116 ^B	1	1
3/4"	EYS21 ^B	EYS216 ^B	2	2
1"	EYS31 ^B	EYS316 ^B	3	3 3/4
1 1/4"	EYS41	EYS416	6	8
1 1/2"	EYS51	EYS516	10 3/4	12 1/4
2"	EYS61	EYS616	19	22 3/4
2 1/2"	EYS71	EYS716	25 1/2	30
3"	EYS81	EYS816	56	64 1/2
3 1/2"	EYS91	EYS916	72	82
4"	EYS101	EYS1016	95	110

For sealing in vertical or horizontal positions –
Groups C and D only



Vertical or
horizontal
female



Vertical or
horizontal
male and female

Hub size	Cat. # Female hub	Cat. # Male and female hub	Approximate internal volume in cubic inches	
			Vertical	Horizontal
1 1/4"	EYS4 ^B	EYS46 ^B	6	8
1 1/2"	EYS5 ^B	EYS56 ^B	10 3/4	12 1/4
2"	EYS6 ^B	EYS66 ^B	19	22 3/4
2 1/2"	EYS7 ^B	EYS76 ^B	25 1/2	30
3"	EYS8 ^B	EYS86 ^B	56	64 1/2
3 1/2"	EYS9 ^B	EYS96 ^B	72	82
4"	EYS10 ^B	EYS106 ^B	95	110
5"	EYS012	EYS0126	200	222
6"	EYS014	EYS0146	290	315

^B Available in copper-free aluminum. To order, add suffix 'SA' to end of catalog number.

EZS



Female hub



Male and female hub

For sealing at any angle

Hub size	Cat. # Female hub	Cat. # Male and female hub	Approximate internal volume in cubic inches	
			Vertical	Horizontal
1/2"	EZS1	EZS16	6 1/4	6 1/4
3/4"	EZS2	EZS26	6 1/2	6 1/2
1"	EZS3	EZS36	10 1/4	10 1/4
1 1/4"	EZS4	EZS46	12 1/2	12 1/2
1 1/2"	EZS5	EZS56	14 1/2	14 1/2
2"	EZS6	EZS66	46	46
2 1/2"	EZS7	EZS76	55	55
3"	EZS8	EZS86	90	90

EYS elbow seal



For sealing in vertical positions

Hub size	Cat. #	Approximate internal volume in cubic inches
3/4"	EYS29	1 3/4

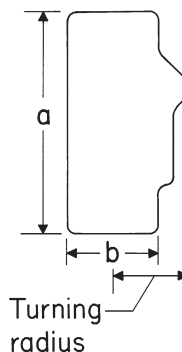
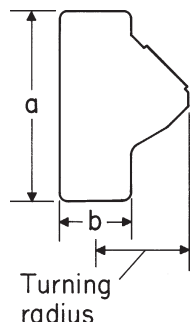
EYS and EZS conduit sealing fittings

See pages 124-125 for
Chico sealing compound and fiber

Cl. I, Div. 1 & 2, Groups A, B, C, D
Cl. II, Div. 1, Groups E, F, G
Cl. II, Div. 2, Groups F, G
Cl. III

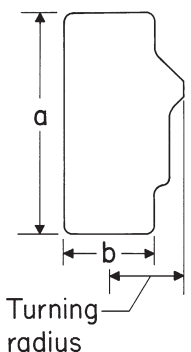
Explosionproof
Dust-ignitionproof

Dimensions (in inches):



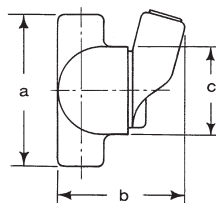
EYS vertical positions

Cat. #	Hub size	a	b	Turning radius
EYS1/EYS16	1/2"	3 ³ / ₃₂	1 ¹ / ₄	1 ⁵ / ₈
EYS2/EYS26	3/4"	3 ¹² / ₁₆	1 ¹ / ₂	1 ²⁹ / ₃₂
EYS3/EYS36	1"	4 ⁵ / ₁₆	1 ³ / ₄	2 ³ / ₈



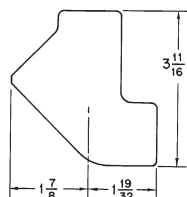
EYS vertical or horizontal positions

Cat. #	Hub size	a	b	Turning radius
EYS11/EYS116	1/2"	3 ¹¹ / ₁₆	1 ¹ / ₄	1 ⁵ / ₃₂
EYS21/EYS216	3/4"	3 ¹¹ / ₁₆	1 ¹ / ₂	1 ¹ / ₄
EYS31/EYS316	1"	4 ⁵ / ₁₆	1 ³ / ₄	1 ³ / ₈
EYS41/EYS416	1 1/4"	5 ¹ / ₁₆	2 ³ / ₁₆	1 ²³ / ₃₂
EYS51/EYS516	1 1/2"	5 ¹ / ₂	2 ¹ / ₁₆	2 ¹ / ₁₆
EYS61/EYS616	2"	6 ¹ / ₄	3	2 ⁵ / ₁₆
EYS71/EYS716	2 1/2"	7 ¹ / ₂	3 ¹ / ₂	2 ¹¹ / ₁₆
EYS81/EYS816	3"	8 ¹ / ₂	4 ¹ / ₄	3 ⁵ / ₁₆
EYS91/EYS916	3 1/2"	9 ¹ / ₁₆	4 ³ / ₄	3 ¹ / ₁₆ [Ⓒ]
EYS101/EYS1016	4"	9 ³ / ₄	5 ¹ / ₄	3 ¹¹ / ₁₆ [Ⓒ]



EYS vertical or horizontal positions Groups C and D only

Cat. #	Hub size	a	b	Turning radius
EYS4/EYS46	1 1/4"	5 ¹ / ₁₆	2 ³ / ₁₆	1 ²³ / ₃₂
EYS5/EYS56	1 1/2"	5 ¹ / ₂	2 ¹ / ₁₆	2 ¹ / ₁₆
EYS6/EYS66	2"	6 ¹ / ₄	3	2 ⁵ / ₁₆
EYS7/EYS76	2 1/2"	7 ¹ / ₂	3 ¹ / ₂	2 ¹¹ / ₁₆
EYS8/EYS86	3"	8 ¹ / ₂	4 ¹ / ₄	3 ⁵ / ₁₆
EYS9/EYS96	3 1/2"	9 ¹ / ₁₆	4 ³ / ₄	3 ¹ / ₁₆ [Ⓒ]
EYS10/EYS106	4"	9 ³ / ₄	5 ¹ / ₄	3 ¹¹ / ₁₆ [Ⓒ]
EYS012/EYS0126	5"	11 ¹ / ₁₆	6 ¹ / ₂	4 ¹⁹ / ₃₂ [Ⓒ]
EYS014/EYS0146	6"	12 ¹ / ₈	7 ⁵ / ₈	5 ¹¹ / ₃₂ [Ⓒ]



EZS

Cat. #	Hub size	a	b	c	Turning radius [Ⓒ]
EZS1/EZS16	1/2"	4 ³ / ₁₆	3 ⁵ / ₈	2 ¹ / ₂	1 ⁷ / ₈
EZS2/EZS26	3/4"	4 ³ / ₁₆	3 ⁵ / ₈	2 ¹ / ₂	1 ¹ / ₈
EZS3/EZS36	1"	4 ¹⁵ / ₁₆	3 ³¹ / ₃₂	3	2 ¹ / ₈
EZS4/EZS46	1 1/4"	5 ¹ / ₁₆	4 ¹³ / ₃₂	3	2 ⁵ / ₁₆
EZS5/EZS56	1 1/2"	5 ³ / ₁₆	4 ⁹ / ₁₆	3 ¹ / ₄	2 ¹¹ / ₃₂
EZS6/EZS66	2"	7 ¹ / ₁₆	5 ¹³ / ₃₂	5 ³ / ₁₆	3 ⁸ / ₃₂
EZS7/EZS76	2 1/2"	7 ¹⁵ / ₁₆	5 ²⁷ / ₃₂	5 ³ / ₁₆	3 ⁵ / ₈
EZS8/EZS86	3"	8 ⁵ / ₈	6 ¹ / ₂	5 ⁵ / ₈	3 ³ / ₈

EYS elbow seal

Cat. #	Hub size	a	b	Turning radius (vertical)
EYS29	3/4"	3 ¹¹ / ₁₆	1 ³ / ₄	1 ⁷ / ₈

[Ⓒ] With cover removed.

EYS conduit sealing fittings – stainless steel

See pages 124-125 for
Chico sealing compound and fiber

Cl. I, Div. 1 & 2, Groups A, B, C, D
Cl. II, Div. 1, Groups E, F, G
Cl. III

Explosionproof
Dust-ignitionproof

5F
5F

Applications:

EYS sealing fittings:

- Restrict the passage of gases, vapors or flames from one portion of the electrical installation to another at atmospheric pressure and normal ambient temperatures
- Limit explosions to the sealed off enclosure
- Limit pre-compression or “pressure piling” in conduit systems

Sealing fittings are required:

- At each entrance to an enclosure housing an arcing or sparking device when used in Class I, Division 1 and 2 hazardous locations; to be located as close as practicable and, in no case, more than 18” from such enclosures
- At each conduit entrance of 2” size or larger to an enclosure or fitting housing terminals, splices or taps when used in Class I, Division 1 hazardous locations; to be located as close as practicable and, in no case, more than 18” from such enclosures
- In conduit systems when leaving Class I, Division 1 or Division 2 hazardous locations
- In cable systems when the cables either do not have a gas/vaportight continuous sheath or are capable of transmitting gases or vapors through the cable core when those cables leave the Class I, Division 1 or Division 2 hazardous locations

Features:

EYS sealing fittings include:

- Minimum turning radius
- Large openings with threaded closures to provide easy access to conduit hubs for making dams
- Integral bushings in conduit hubs to protect conductor insulation from damage
- Taper tapped hubs to ensure ground continuity

EYS sealing fittings are available for installation in both horizontal or vertical positions.

Stainless steel benefits:

- Retain strength in extreme heat and extreme cold conditions
- Surface is easy to maintain and keep clean
- Easy cleaning capabilities make these fittings perfect for food processing and other hygienic areas where wash downs are common
- Superior strength and durability greatly reduce replacement – this will lower your total cost of ownership and increase your return on investment
- Do not require harsh environment-damaging cleaners to keep them looking like new

Certifications and compliances:

NEC/CEC:

- Class I, Divisions 1 & 2, Groups A, B, C, D
- Class II, Division 1, Groups E, F, G
- Class III

Standard material:

- Bodies and plugs – 316 stainless steel

Standard finish:

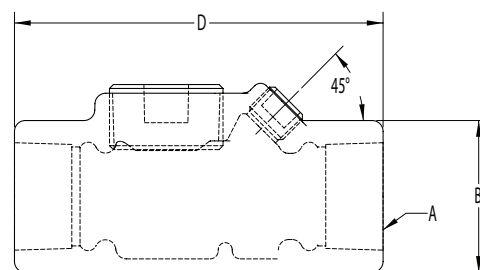
- Passivated

Ordering information:

For sealing in vertical or horizontal positions

Hub size	Cat. # Female hub
3/4"	EYS21 SS
1"	EYS31 SS

Dimensions (in inches):



Hub size	A	B	C	D
3/4"	0.75	1.50	1.95	3.63
1"	1.00	1.75	2.20	4.25



Accessories (ordered separately):

Description	Cat. #
• 3/4" to 1/2" reducer.....	RDU303029
See page 92 for more information	
• 1/2" conduit nipple	NPL50CL 316SS
• 3/4" conduit nipple.....	NPL75CL 316SS
• 1" conduit nipple	NPL100CL 316SS
See Commercial Products Catalog for more information	